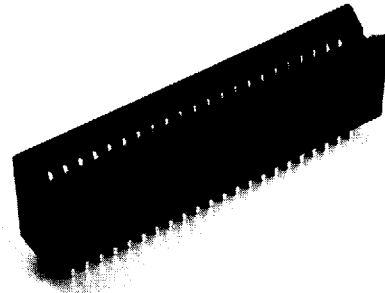


**.100" CENTER-TO-CENTER
.200" ROW-TO-ROW
PRESS-FIT FULL SCOOP**



PHYSICAL PROPERTIES

INSULATION RESISTANCE: 5000 megohms minimum.
CONTACT RETENTION INTO PCB: 5lbs. min.
INSERTION FORCE: 10 oz. max. measured with a .0700 ± .0001 THK polished blade per MIL-C-21097C
WITHDRAWAL FORCE: 1 oz. min. measured with a .0540 ± .0001 THK polished test blade per MIL-C-21097C after sizing 3 times with a .0700 ± .0001 THK blade
INSULATOR BODY: High Temp. Glass filled thermoplastic, UL rating 94V-O
COLOR: Black
SPRING CONTACT: Phosphor Bronze alloy
CONTACT PLATING: 50 microinches nickel underplate with 30 microinches gold in the mating area, tin/lead on tails, 100 microinches minimum

ELECTRICAL PROPERTIES

OPERATING VOLTAGE: 600 VDC (sea level)
CURRENT RATING: 3 Amperes
CONTACT RESISTANCE: 10 milliohms

ENVIRONMENTAL PROPERTIES

OPERATING TEMPERATURE: -55°C to +125°C
TEMPERATURE CYCLING: MIL-STD-202 method 107
VIBRATION: MIL-STD-202, method 204

APPLICATION TOOLING

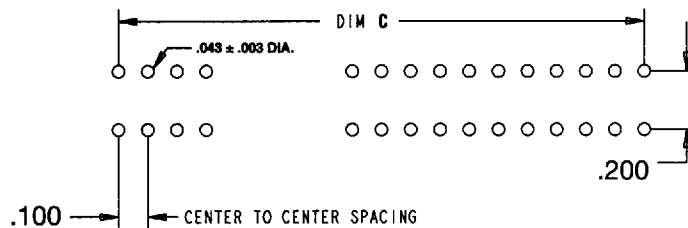
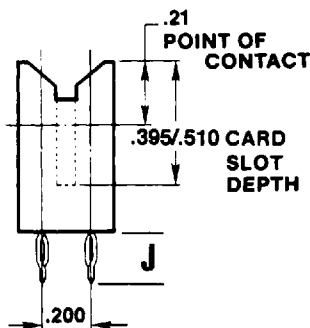
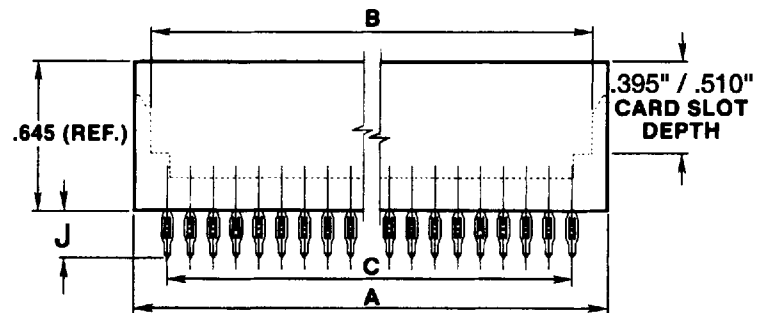
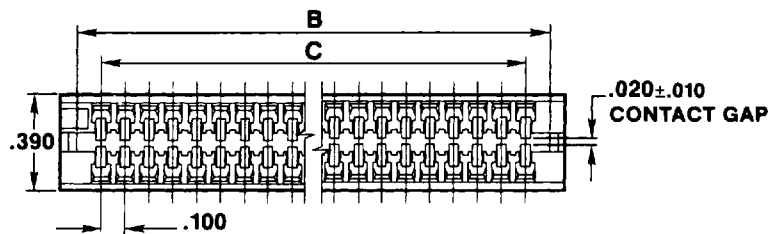
INSERTION TOOL: Cat. # 98236, see page 420

ACCESSORIES

POLARIZATION KEY: Cat. # 98014-00, see page 372

DAUGHTER CARD

See page 373 for layout



Open ends and open/closed ends are available. Consult factory.

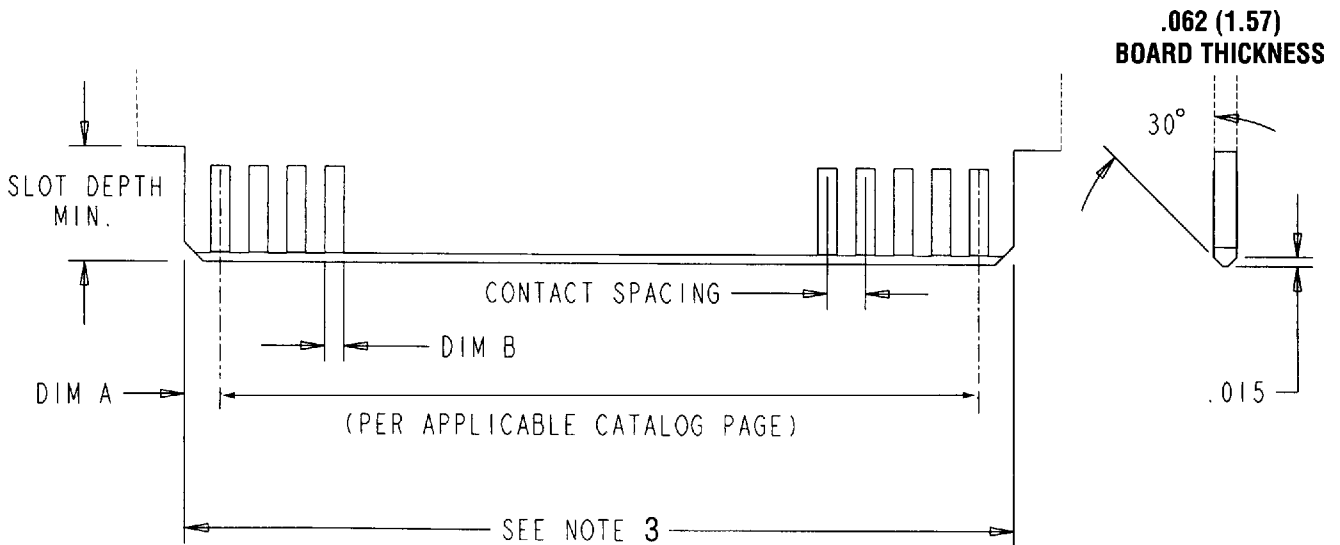
ORDERING INFORMATION -

.100 CENTERLINE / .200 ROW-TO-ROW

# OF DUAL READOUT POS.	CATALOG NUMBER		DIMENSIONS		
	.510 CARD SLOT DEPTH	.395 CARD SLOT DEPTH	A	B	C
TAIL LENGTH .670 (DIM "J")					
18	W8D18PF29012	W8D18PF29042	2.034	1.904	1.700
20	W8D20PF29012	W8D20PF29042	2.234	2.104	1.900
22	W8D22PF29012	W8D22PF29042	2.434	2.304	2.100
25	W8D25PF29012	W8D25PF29042	2.734	2.604	2.400
28	W8D28PF29012	W8D28PF29042	3.034	2.904	2.700
30	W8D30PF29012	W8D30PF29042	3.234	3.104	2.900
35	W8D35PF29012	W8D35PF29042	3.734	3.604	3.400
36	W8D36PF29012	W8D36PF29042	3.834	3.704	3.500
40	W8D40PF29012	W8D40PF29042	4.234	4.104	3.900
43	W8D43PF29012	W8D43PF29042	4.534	4.404	4.200
45	W8D45PF29012	W8D45PF29042	4.734	4.604	4.400
50	W8D50PF29012	W8D50PF29042	5.234	5.104	4.900
60	W8D60PF29012	W8D60PF29042	6.234	6.104	5.900
TAIL LENGTH .180 (DIM "J")					
18	W8D18PF29013	W8D18PF29043	2.034	1.904	1.700
20	W8D20PF29013	W8D20PF29043	2.234	2.104	1.900
22	W8D22PF29013	W8D22PF29043	2.434	2.304	2.100
25	W8D25PF29013	W8D25PF29043	2.734	2.604	2.400
28	W8D28PF29013	W8D28PF29043	3.034	2.904	2.700
30	W8D30PF29013	W8D30PF29043	3.234	3.104	2.900
35	W8D35PF29013	W8D35PF29043	3.734	3.604	3.400
36	W8D36PF29013	W8D36PF29043	3.834	3.704	3.500
40	W8D40PF29013	W8D40PF29043	4.234	4.104	3.900
43	W8D43PF29013	W8D43PF29043	4.534	4.404	4.200
45	W8D45PF29013	W8D45PF29043	4.734	4.604	4.400
50	W8D50PF29013	W8D50PF29043	5.234	5.104	4.900
60	W8D60PF29013	W8D60PF29043	6.234	6.104	5.900

CARDEDGE CONNECTORS RECOMMENDED DAUGHTER CARD LAYOUT

PER MIL-C-21097E



Daughter Card

CONTACT SPACING NON-ACCUM.	DIM A ±.005 (.13)	DIM B
.100 (2.54)	.093 (2.36)	.052 (1.32)
.125 (3.18)	.093 (2.36)	.052 (1.32)
.156 (3.96)	.105* (2.67)	.094 (2.39)

* Except MIL-C-21097E 8-4 which is .070 (1.78)

NOTES:

1. Dimensions are in inches
2. Unless otherwise specified, tolerance is ±.005 (0.13 mm) for three place decimals.
3. Number of contact fingers shall be the same as the corresponding printed wiring connector.