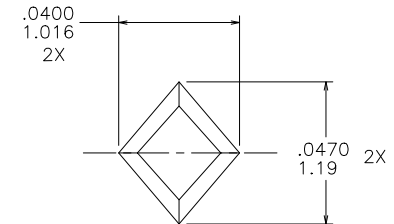
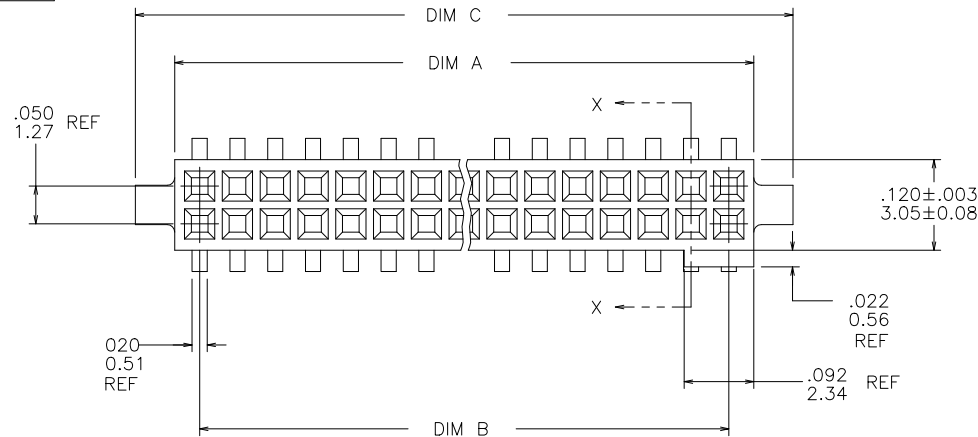
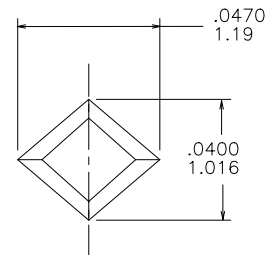


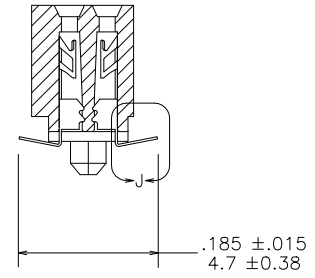
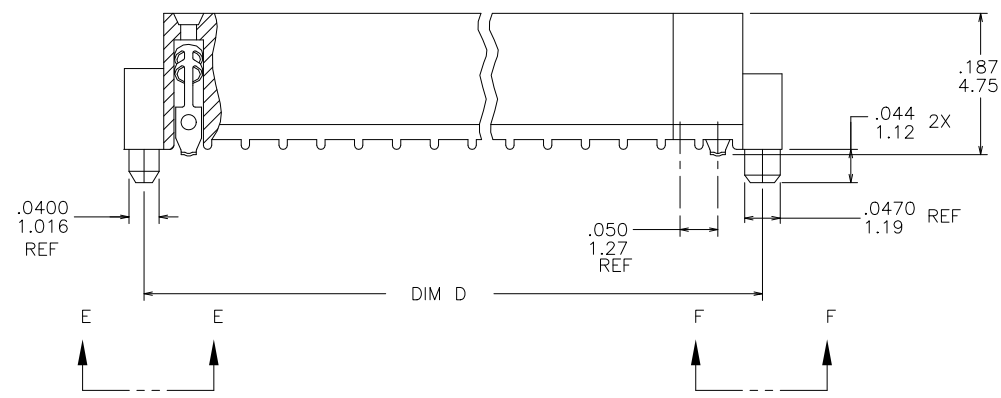
PRODUCT NUMBER
SEE TABLE



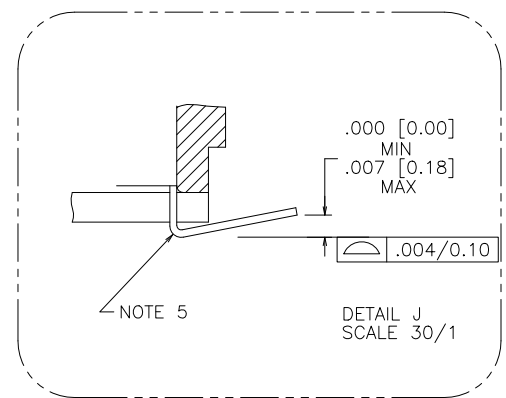
VIEW E-E
SCALE 40/1



VIEW F-F
SCALE 40/1



SECTION X-X



mat'l. code				surface		tolerance		projection		product family	
-				ISO 1302 ✓		ISO 406 ISO 1101				RIBCAGE	
ltr	ecn no	dr	date	tolerances unless otherwise specified						title	
M	V10994	DLW	3/9/01	angles	linear	.XX±.01/0.3		INCH/MM		.050/1.27 CC V.C.C. SMT.	
N	V11674	CRG	7/12/01			.xxx±.005/0.13		scale 4:1		W/POL. HOLD DOWN	
P	M05-0123	ERE	06/10/05	0°±2°		.xxxx±.0020/0.051				dwg no	
R	M06-0225	ERE	06/12/06	dr	J. SHREINER	8/20/91				sheet 1 of 3 size	
S	M06-0370	MHT	9/26/06	engr	B. BARUFFALO	8/20/91				91407	
T	N10-0174	YO	6/17/10	chr	B. BARUFFALO	8/20/91				A3	
U	ELX-N-010277	YO	2/13/12	appd	B. BARUFFALO	8/20/91				type Product Customer Drawing	
sheet	revision	U	U	U							
index	sheet	1	2	3							

PRODUCT NO. NOTE 8	SIZE	DIM A	DIM B	DIM C	DIM D	SPECIAL PACKAGING	TAPE / WIDTH/PITCH	PIECES PER REEL
91407-605	2 X 5	.266/6.76	.200/5.08	.370/9.40	.320/8.13	-	-	-
-610	2 X 10	.516/13.11	.450/11.43	.620/15.75	.570/14.48	NOTE 7	24m/12m	150
-615	2 X 15	.766/19.46	.700/17.78	.870/22.10	.820/20.83	NOTE 7	44m/12m	500
-620	2 X 20	1.016/25.81	.950/24.13	1.120/28.45	1.070/27.18	-	-	-
-625	2 X 25	1.266/32.16	1.200/30.48	1.370/34.80	1.320/33.53	NOTE 7	56m/12m	500
-630	2 X 30	1.516/38.51	1.450/36.83	1.620/41.15	1.570/39.88	NOTE 7	56m/12m	500
-635	2 X 35	1.766/44.86	1.700/43.18	1.870/47.50	1.820/46.23	-	-	-
-640	2 X 40	2.016/51.21	1.950/49.53	2.120/53.85	2.070/52.58	-	-	-
-645	2 X 45	2.266/57.56	2.200/55.88	2.370/60.20	2.320/58.93	-	-	-
-650	2 X 50	2.516/63.91	2.450/62.23	2.620/66.55	2.570/65.28	-	-	-
-905	2 X 5	.266/6.76	.200/5.08	.370/9.40	.320/8.13	-	-	-
-910	2 X 10	.516/13.11	.450/11.43	.620/15.75	.570/14.48	-	-	-
-915	2 X 15	.766/19.46	.700/17.78	.870/22.10	.820/20.83	-	-	-
-920	2 X 20	1.016/25.81	.950/24.13	1.120/28.45	1.070/27.18	-	-	-
-925	2 X 25	1.266/32.16	1.200/30.48	1.370/34.80	1.320/33.53	-	-	-
-930	2 X 30	1.516/38.51	1.450/36.83	1.620/41.15	1.570/39.88	-	-	-
-935	2 X 35	1.766/44.86	1.700/43.18	1.870/47.50	1.820/46.23	-	-	-
-940	2 X 40	2.016/51.21	1.950/49.53	2.120/53.85	2.070/52.58	-	-	-
-945	2 X 45	2.266/57.56	2.200/55.88	2.370/60.20	2.320/58.93	-	-	-
91407-950	2 X 50	2.516/63.90	2.450/62.23	2.620/66.55	2.570/65.28	-	-	-

NOTES :

- ① HOUSING MATERIAL :
GLASS FILLED THERMOPLASTIC FLAME RETARDANT PER UL 94V-0
COLOR: NATURAL
- ② TERMINAL MATERIAL : BeCu
- ③ TERMINAL PLATING :
6X 30u"/0.76um MIN HARD GOLD OR GXT OVER Ni ON CONTACT ZONE
100u"/2.54um MIN Sn OVER Ni IN SOLDERING ZONES
OTHERWISE GOLD FLASH OR UNPLATED
9X 60u"/1.52um MIN HARD GOLD OVER Ni ON CONTACT ZONE
100u"/2.54um MIN Sn OVER Ni IN SOLDERING ZONES
OTHERWISE GOLD FLASH OR UNPLATED
4. APPLICATION INFORMATION :
A. RECOMMENDED MOUNTING PAD PATTERN IS SHOWN IN FIGURE "A".
B. MATING PINS TO BE .0176/0.447 TO .0181/0.459 THICK.
C. MATING PIN TIPS TO BE IN TRUE POSITION TO MATING GRID WITHIN .008/0.20 DIA.
D. SUGGESTED MATING PIN LENGTH .130/3.30 ±.010/0.25.
- ⑤ LEAD TIPS TO BE ABOVE HEEL, UP TO .007/0.18 MAX.
COPLANARITY TO BE MEASURED AT LOWEST POINT (HEEL).
6. ADD "CT" TO END OF DASH NUMBER FOR CONNECTOR
WITH VACUUM CAP IN TUBE.
- ⑦ ADD "TR" TO END OF DASH NUMBER FOR TAPE & REEL
PACKAGED WITH CAP. TOOLED ONLY FOR TOOLED CONNECTORS.
- ⑧ ADD "LF" SUFFIX AT THE END OF PART NUMBER FORE LEAD FREE OPTION.
- ⑨ THIS PRODUCT MEETS EUROPEAN UNION DIRECTIVES
AND OTHER COUNTRY REGULATION AS DESCRIBED IN GS-22-008.
10. THE HOUSING WILL WITHSTAND EXPOSURE TO 260° PEAK TEMPERATURE
FOR 20 SECONDS IN A CONVECTION INFRA-RED OR VAPOR PHASE REFLOW
OVEN. SEE APPLICATION NOTES/PROCEDURES IF THEY ARE AVAILABLE.
11. PRODUCT SPECIFICATION PER BUS-12-087.

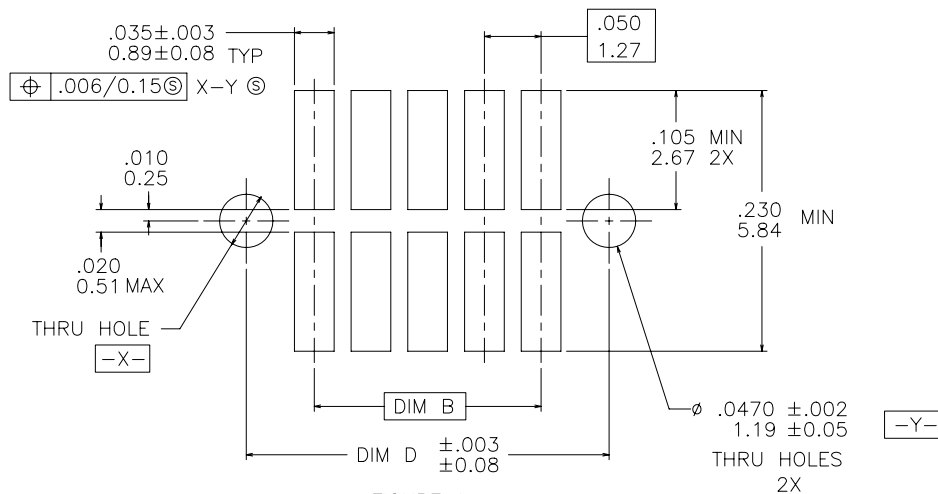


FIGURE A
RECOMMENDED
P.C.B. LAYOUT

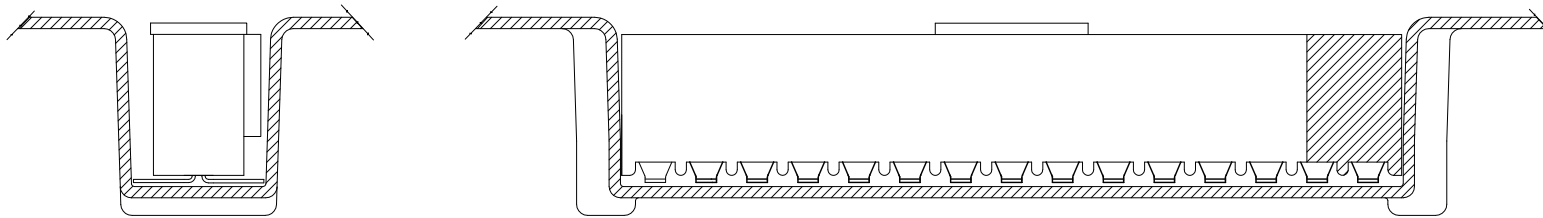
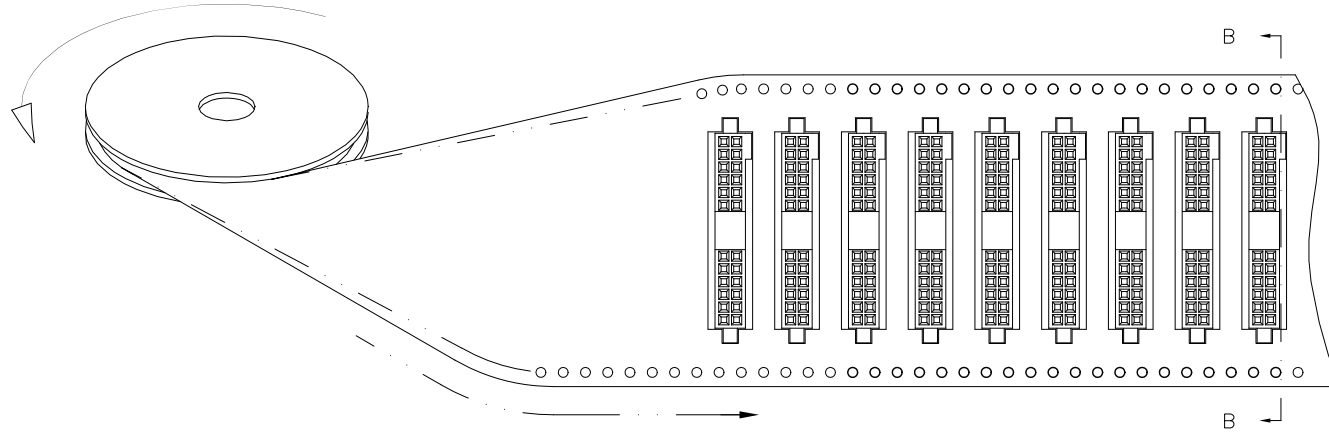
mat'l. code		surface		tolerance		projection		product family	
-		ISO 1302 ✓		ISO 406 ISO 1101				RIBCAGE	
ltr	ecn	no	dr	date		tolerances unless otherwise specified		title	
U						angles linear .XX±.01/0.3 .xxx±.005/0.13 0°±2' .xxxx±.0020/0.051		.050/1.27 CC V.C.C. SMT. W/POL. HOLD DOWN	
				dr		J. SHREINER 8/20/91		dwg no	
				enrg		B. BARUFFALO 8/20/91		sheet 2 of 3 size	
				chr		B. BARUFFALO 8/20/91		91407 A3	
				appd		B. BARUFFALO 8/20/91		type Product Customer Drawing	
sheet index		revision sheet							

PRODUCT NUMBER
SEE TABLE

REFERENCE ONLY

TAPE WIDTH'S 32mm AND ABOVE HAS BOTH FEED TRACKS,
BELOW 32mm HAS TOP FEED TRACK ONLY.

UNREELING
DIRECTION



SECTION B-B

mat'l. code -		surface ISO 1302 ✓	tolerance ISO 406 ISO 1101	projection INCH/MM scale 4:1	product family RIBCAGE
ltr	ecn	no	dr	date	tolerances unless otherwise specified
U					angles linear .XX±.01/0.3 .xxx±.005/0.13 0°±2° .xxx±.0020/0.051
			dr	J. SHREINER	8/20/91
			enr	B. BARUFFALO	8/20/91
			chr	B. BARUFFALO	8/20/91
			app	B. BARUFFALO	8/20/91
sheet index	revision sheet				

title
050/1.27 CC V.C.C. SMT.
W/POL. HOLD DOWN

dwg no 91407 sheet 3 of 3 size A3

type Product Customer Drawing

