

LOW PROFILE HEADERS RIGHT ANGLE PINS WITH RETAINER/EJECTOR LATCHES

.100" x .100" CENTERS



LR92984 E60980

PHYSICAL PROPERTIES

INSULATION MATERIAL: Glass filled thermoplastic rated UL 94V-0

COLOR: Blue

CONTACT MATERIAL: Phosphor bronze with 30µ inches min. gold over 50µ inches min. nickel in contact zone; tin/lead over nickel in termination area.

ELECTRICAL PROPERTIES

CURRENT RATING: 1 Amp

INSULATION RESISTANCE: >1 x 10⁶ Ohms @ 500 VDC

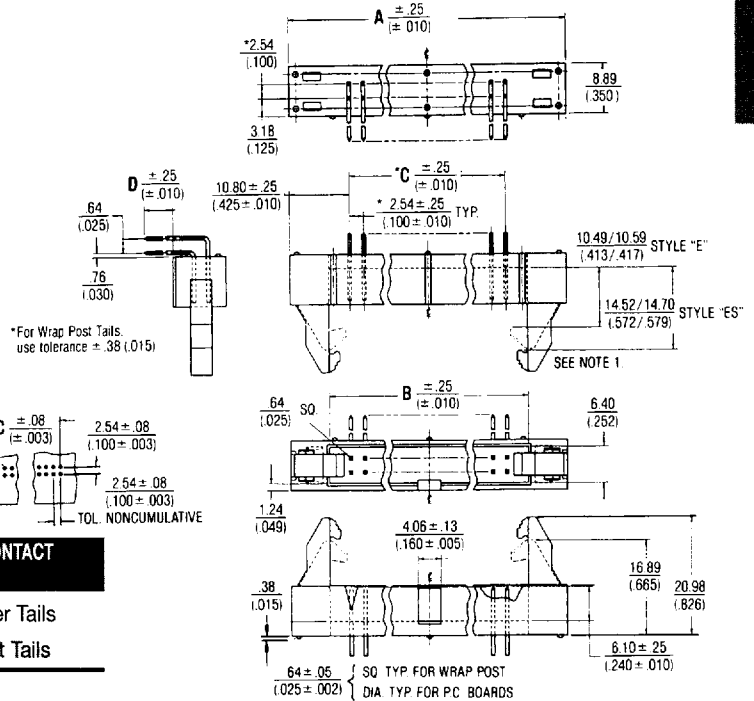
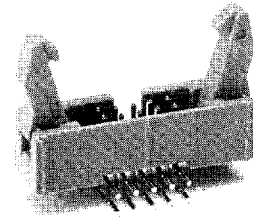
DIELECTRIC STRENGTH: >1000 VRMS @ sea level

ENVIRONMENTAL PROPERTIES

TEMPERATURE RATING: -55°C TO 125°C

MATING CONNECTORS

FEMALE SOCKETS: See pages 8-10



HOLE DIA. ±.08 (±.003) AFTER PLATING	TYPE OF CONTACT
.89 (.035)	PCB Solder Tails
1.14 (.045)	Wrap Post Tails

Ordering Information

CATALOG NUMBERS			NO. OF POS.	DIMENSIONS IN MM (INCHES)		
DIMENSIONS "D" IN MM (INCHES)				A	B	C
2.59 (.102)	4.19 (.165)	15.49 (.610)	8	29.21 (1.150)	15.24 (.600)	7.26 (.300)
1.57 (.062)	3.18 (.125)	WRAP POST				
P.C. BOARDS	P.C. BOARDS	TAILS				
609-0807XX	609-0817XX	609-0847XX	8	29.21 (1.150)	15.24 (.600)	7.26 (.300)
609-1007XX	609-1017XX	609-1047XX	10	31.75 (1.250)	17.78 (.700)	10.16 (.400)
609-1207XX	609-1217XX	609-1247XX	12	34.29 (1.350)	20.32 (.800)	17.70 (.500)
609-1407XX	609-1417XX	609-1447XX	14	36.83 (1.450)	22.86 (.900)	15.24 (.600)
609-1607XX	609-1617XX	609-1647XX	16	39.37 (1.550)	25.40 (1.000)	17.78 (.700)
609-2007XX	609-2017XX	609-2047XX	20	44.45 (1.750)	30.48 (1.200)	22.86 (.900)
609-2407XX	609-2417XX	609-2447XX	24	49.53 (1.950)	35.55 (1.400)	27.94 (1.100)
609-2607XX	609-2617XX	609-2647XX	26	52.07 (2.050)	38.10 (1.500)	30.48 (1.200)
609-3007XX	609-3017XX	609-3047XX	30	57.15 (2.250)	43.18 (1.700)	35.56 (1.400)
609-3407XX	609-3417XX	609-3447XX	34	62.23 (2.450)	48.26 (1.900)	40.64 (1.600)
609-3607XX	609-3617XX	609-3647XX	36	64.77 (2.550)	50.80 (2.000)	43.18 (1.700)
609-4007XX	609-4017XX	609-4047XX	40	69.85 (2.750)	55.88 (2.200)	48.26 (1.900)
609-4407XX	609-4417XX	609-4447XX	44	74.93 (2.950)	60.96 (2.400)	53.34 (2.100)
609-5007XX	609-5017XX	609-5047XX	50	82.55 (3.250)	68.58 (2.700)	60.96 (2.400)
609-5607XX	609-5617XX	609-5647XX	56	90.17 (3.550)	76.20 (3.000)	68.58 (2.700)
609-6007XX	609-6017XX	609-6047XX	60	95.25 (3.750)	81.28 (3.200)	73.66 (2.900)
609-6407XX	609-6417XX	609-6447XX	64	100.33 (3.950)	86.36 (3.400)	78.74 (3.100)

- For long ejectors, add suffix ES (-XXXXES). For short ejectors, add suffix E (-XXXXE)
- Add "R" to part number for PCB retention feature.