

PRODUCT NUMBER

5 3 6 3 1 - X X X - X X X LF

PLATING

G=30µm[0.76µm]GOLD
ON CONTACT AREA
100µm[2.54µm]TIN/LEAD ON TAIL

LEAD FREE PLATING

G=30µm[0.76µm]GOLD
ON CONTACT AREA
100µm[2.54µm]PURE TIN ON TAIL

LEAD FREE OPTION
NOTE 10,11

POLARIZATION

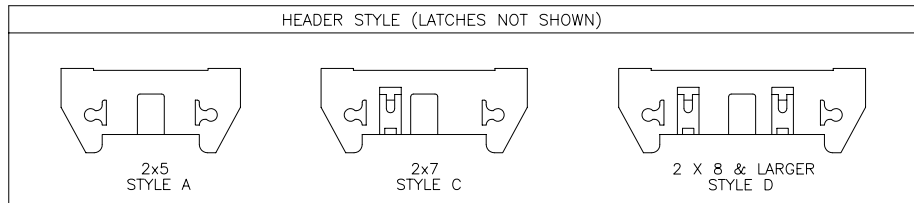
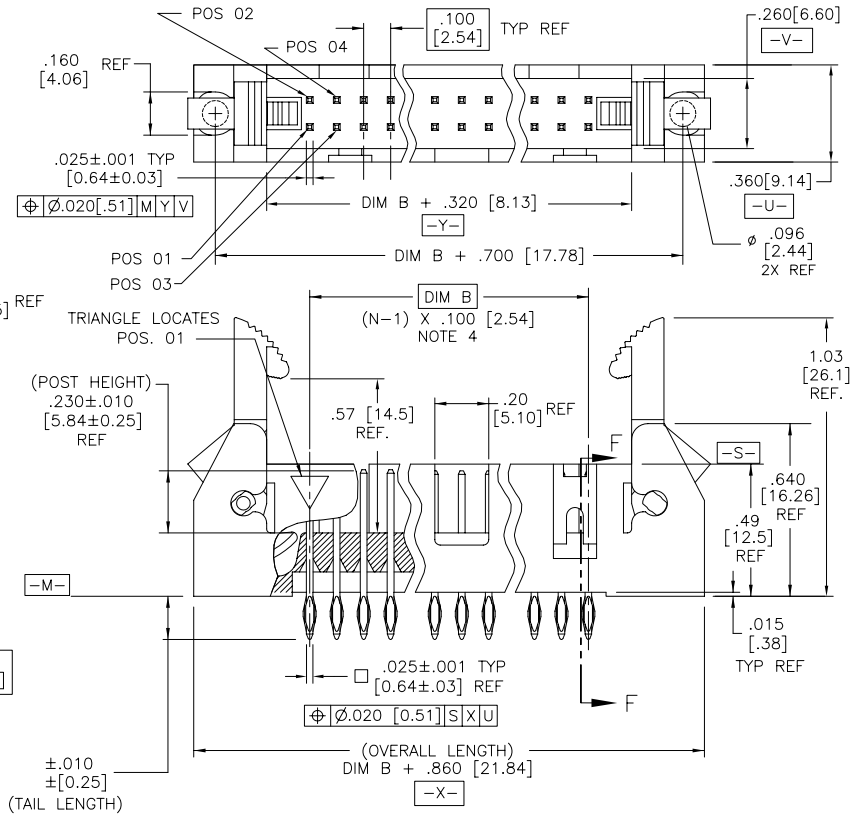
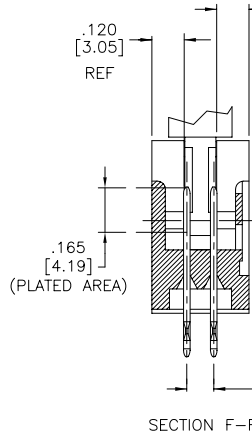
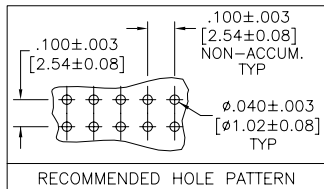
TAIL LENGTH

2 = .120 [3.05]
3 = .160 [4.06]
6 = .610 [15.49]
8 = .733 [18.62]

DASH NO.	POSITIONS	HEADER STYLE
10	2 X 5	A
14	2 X 7	C
16	2 X 8	D
20	2 X 10	D
26	2 X 13	D
34	2 X 17	D
40	2 X 20	D
50	2 X 25	D

NOTES:

- HOUSING MAT'L: HIGH TEMPERATURE THERMOPLASTIC.
UL94V-0.
COLOR : BLACK
- PIN MATERIAL: PHOSPHOR-BRONZE
- 3 LBS/1.36 KG MIN. RETENTION.
- TO DETERMINE DIMENSIONS:
N = NUMBER OF POSITIONS.
EXAMPLE: 10 POS., (N-1) x .100[2.54]=.900[22.87]
- PACKAGED PER BUS-14-312 IN TRAYS.
- UNDERPLATING: 50µm/1.27µm Ni.
- FOR POLARIZATION, SPECIFY POSITION NUMBER (i.e. 03= PIN 3) TO OMIT PIN.
OMIT FROM PRODUCT NUMBER IF THIS FEATURE IS NOT APPLICABLE.
- RECOMMENDED PLATED-THRU-HOLE DIMENSIONS ARE:
DRILLED HOLE: .0453/1.604±.0010/.025 DIA
COPPER PLATING THICKNESS .001/.025 TO .003/.076
SOLDER PLATING THICKNESS: .0003/.076 TO .0007/.0178
OVERALL HOLE SIZE: .040/1.016±.003/.076 DIA
- RECOMMENDED MOUNTING SCREW - #2-56 FILLISTER
HEAD MACHINE SCREW .25/6.35 LONG FOR
.063/1.58 & .094/2.38 BOARDS, .313/7.93 LONG
FOR .125/3.18 BOARDS.
- ADD "LF" SUFFIX AT THE END OF PART NUMBER FOR LEAD FREE OPTION.
- THIS PRODUCT MEETS EUROPEAN UNION DIRECTIVES AND OTHER
COUNTRY REGULATION AS DESCRIBED IN GS-22-008.
- THE PRODUCT IS NOT INTENDED TO BE EXPOSED TO
A MANUFACTURING SOLDER PROCESS.



mat'l. code		surface ISO 1302 ✓	tolerance ISO 406 ISO 1101	projection INCH/MM	product family QUICKIE
ltr	ecn no dr	date		title	
A	V02362	AZ	9/27/00	.100/2.54cc EJECT LATCH	
B	M05-0089	ERE	5/20/05	SHOROUDED VERTICAL HEADER	
C	M06-0289	AGS	7/29/06	scale 1:1	
angles		linear		dwg no	
0°±2'		.XX±.01/.3 .XXX±.005/.13 .XXXX±.0020/.051		sheet 1 of 1 size	
dr		engr		53631	
A. ZEREBILOV		M. MOSTOLLER		A3	
9/27/00		9/27/00		type	
chr		app		Product Customer Drawing	
M. MOSTOLLER		M. MOSTOLLER			
9/27/00		9/27/00			
sheet		revision			
index		sheet			
C		1			



FCIconnect.com

Copyright FCI