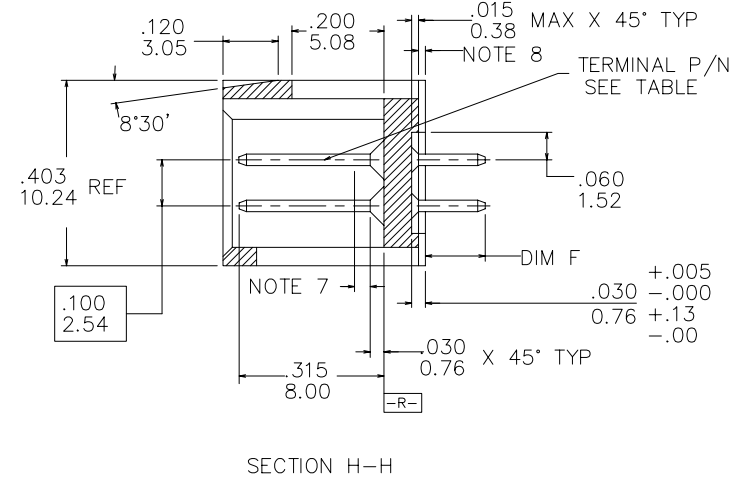
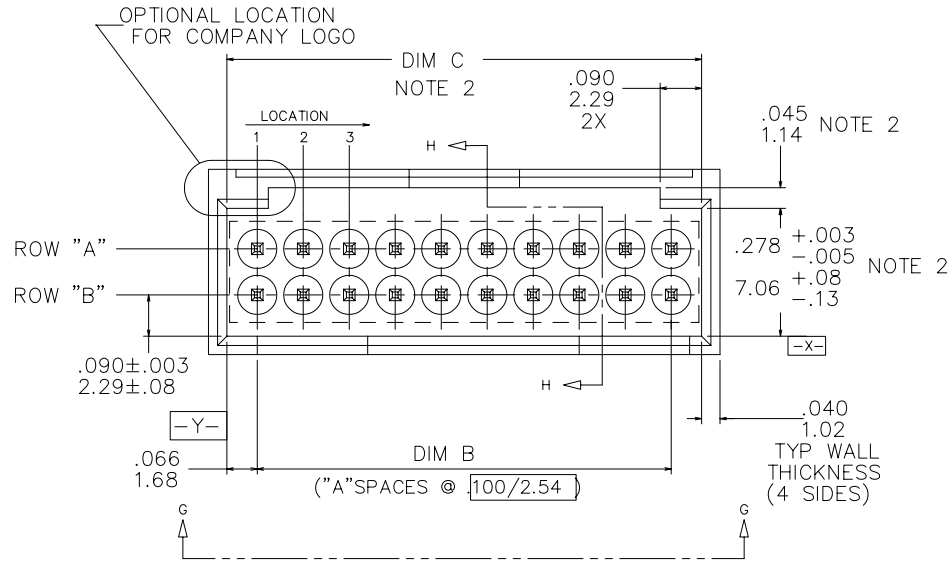
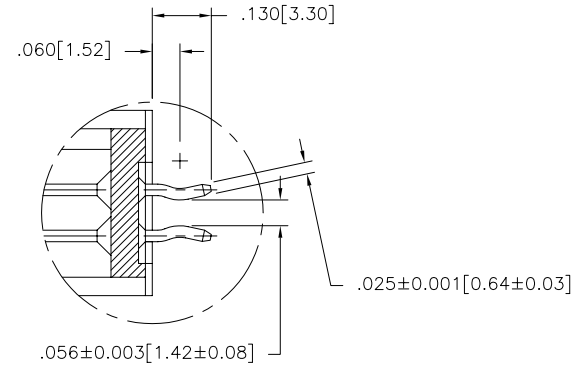
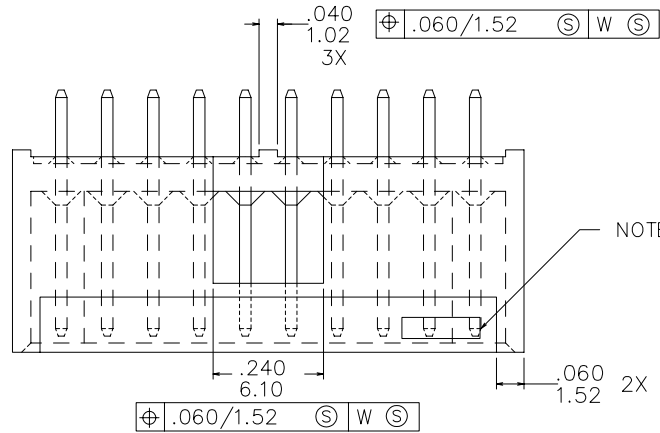


Tous droits strictement réservés. Reproduction ou communication a des tiers interdite sous quelque forme que ce soit sans autorisation écrite du propriétaire. Propriete de c FCI. Droits de reproduction FCI.

**FCI**

All rights strictly reserved. Reproduction or issue to third parties in any form whatever is not permitted without written authority from the proprietor. Property of FCI. Copyright FCI.

PRODUCT NUMBER  
SEE TABLE



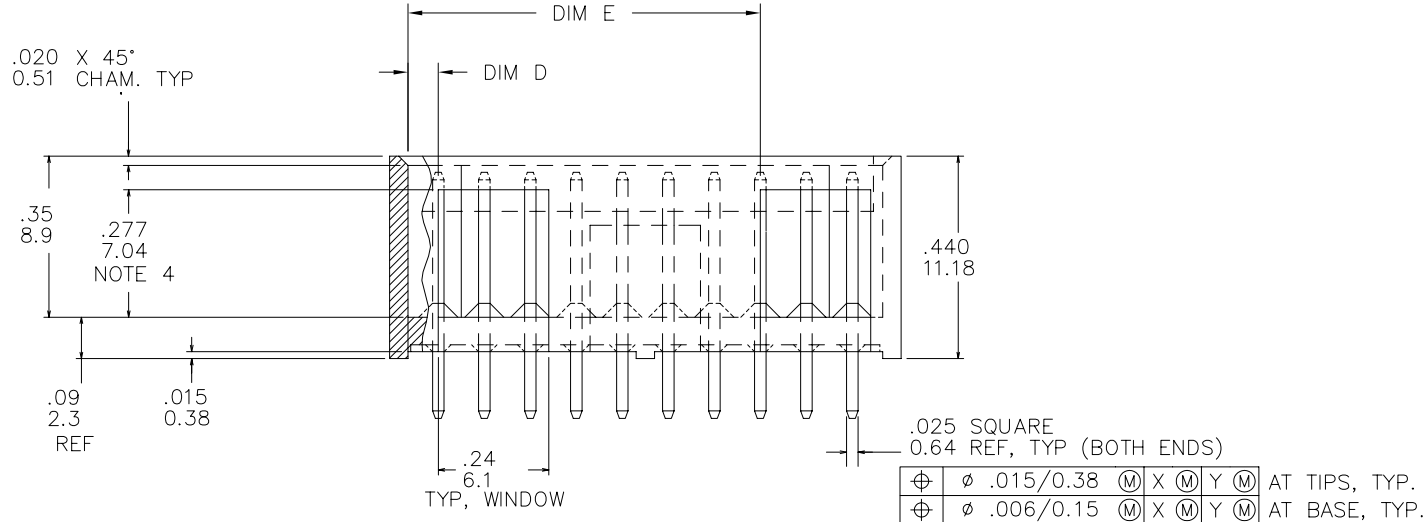
mat'l. code NOTE 1				tolerances unless otherwise specified			CUSTOMER COPY	<b>FCI</b> www.fciconnect.com	
ltr	ecn no	dr	date	linear	.xx ±.01/.x±.3		projection INCH/MM	title	
A	APPROVED	JWB	4/3/85		.xxx ±.005/.xx±.13			STRAIGHT HEADER FOR ROUND WIRE RECEPTACLE	
B	REDRAWN	MRC	11/30/89		.xxxx ±.0020/.xxx±.051			product family size/ dwg no	
C	REDRAWN	JWB	3/7/90	angles	0° ±2°		HEADER		
D	MODIFIED	MRC	9/18/90	dr	S. ROYER	3/7/90	code		
E	V70169	SAR	3/4/97	enr	L. FYE	3/7/90	-		
F	V71425	SAR	10/7/97	chr	L. FYE	3/7/90	sheet		
G	M05-0089	MHT	5/24/05	appd	H.SUNDY	3/7/90	1 of 6		
sheet index	revision sheet	G	G	G	G	G			
		1	2	3	4	5			

Tous droits strictement reserves. Reproduction ou communication a des tiers interdite sous quelque forme que ce soit sans autorisation ecrite du proprietaire. Propriete de c FCI. Droits de reproduction FCI.

**FCI**

All rights strictly reserved. Reproduction or issue to third parties in any form whatever is not permitted without written authority from the proprietor. Property of FCI. Copyright FCI.

PRODUCT NUMBER  
SEE TABLE



VIEW G-G

NOTES:

1. TERMINAL MATERIAL: 3/4 HARD PHOS-BRONZE ALLOY UNS-C51000.
2. TERMINAL PLATING: 15u"/0.38u GXT PLATING ON SWAGED TIPS IS MANUFACTURER'S OPTION.
3. MOLDING MATERIAL: GLASS-FILLED POLYESTER, FLAME RETARDANT PER UL-94V-0, COLOR: BLACK
- ④ .020/0.51 MAX FLASH AROUND ALL WINDOWS.
- ⑤ COMPANY LOGO MOLDED IN DATUM SURFACE -Z- APPROX. AS SHOWN.
- ⑥ .030/0.76 MAX FLASH PERMISSIBLE ON THIS END OF PINS.
7. OTHER PLATINGS ARE AVAILABLE ON 68663, 68664, AND 68666.
- ⑧ .015/0.38 MAX FLASH PERMISSIBLE ON THIS END OF PINS.
9. PART NUMBERS WITH "R" ON THE END ARE TO HAVE RETENTION TAILS. (EX 2x5 PINS A1,B1,A5, & B5)
- ⑩ ADD "LF" SUFFIX AT THE END OF PART NUMBER FOR LEAD FREE OPTION.
11. THE HOUSING WILL WITHSTAND EXPOSURE TO 260°C PEAK TEMPERATURE FOR 15 SECONDS IN A WAVE SOLDER APPLICATION WITH A 1.5mm MINIMUM THICK CIRCUIT BOARD. SEE APPLICATION NOTES/PROCEDURES IF THEY ARE AVAILABLE.
12. THIS PRODUCT MEETS EUROPEAN UNION DIRECTIVES AND OTHER COUNTRY REGULATION AS DESCRIBED IN GS-22-008.

mat'l. code -				tolerances unless otherwise specified			CUSTOMER COPY		 www.fciconnect.com		
ltr	ecn no	dr	date	linear	.xx ±.01/.x±.3		projection	title			
G					.xxx ±.005/.xx±.13			 INCH/MM	STRAIGHT HEADER FOR ROUND WIRE RECEPTACLE		
				angles	0° ±2°		scale 1:2.5		product family	HEADER	code
				dr	S. ROYER	3/7/90		A	size	dwg no	sheet
				enr	L. FYE	3/7/90			68665	-	2 of
				chr	L. FYE	3/7/90					
				appd	H.SUNDY	3/7/90					
sheet index	revision sheet										

Tous droits strictement reserves. Reproduction ou communication a des tiers interdite sous quelque forme que ce soit sans autorisation ecrite du proprietaire. Propriete de c FCI. Droits de reproduction FCI.



All rights strictly reserved. Reproduction or issue to third parties in any form whatever is not permitted without written authority from the proprietor. Property of FCI. Copyright FCI.

PRODUCT NO	NO.OF		A	DIM B	DIM B	DIM C	DIM C	REAR SLOT VIEW G-G				DIM F	DIM F	TERMINAL	POL. POS		
	NOTE 10	POS						PINS	SPACES	ENGLISH	METRIC				ENGLISH	METRIC	ENGLISH
68665-001		6	6	2	0.200	5.08	0.332	8.43	0.066	1.68	0.000	0.00	0.130	3.30	15u"/0.60 GXT	----	----
68665-002		8	8	3	0.300	7.62	0.432	10.97	0.066	1.68	0.000	0.00	0.130	3.30			
68665-003		10	10	4	0.400	10.16	0.532	13.51	0.166	4.22	0.000	0.00	0.130	3.30			
68665-004		12	12	5	0.500	12.70	0.632	16.05	0.166	4.22	0.000	0.00	0.130	3.30			
68665-005		14	14	6	0.600	15.24	0.732	18.59	0.266	6.76	0.000	0.00	0.130	3.30			
68665-006		16	16	7	0.700	17.78	0.832	21.13	0.266	6.76	0.000	0.00	0.130	3.30			
68665-007		18	18	8	0.800	20.32	0.932	23.67	0.366	9.30	0.000	0.00	0.130	3.30			
68665-008		20	20	9	0.900	22.86	1.032	26.21	0.066	1.68	0.766	19.46	0.130	3.30			
68665-009		22	22	10	1.000	25.40	1.132	28.75	0.066	1.68	0.866	22.00	0.130	3.30			
68665-010		24	24	11	1.100	27.94	1.232	31.29	0.066	1.68	0.966	24.54	0.130	3.30			
68665-011		26	26	12	1.200	30.48	1.332	33.83	0.066	1.68	1.066	27.08	0.130	3.30			
68665-012		28	28	13	1.300	33.02	1.432	36.37	0.066	1.68	1.166	29.62	0.130	3.30			
68665-013		30	30	14	1.400	35.56	1.532	38.91	0.066	1.68	1.266	32.16	0.130	3.30			
68665-014		32	32	15	1.500	38.10	1.632	41.45	0.066	1.68	1.366	34.70	0.130	3.30			
68665-015		34	34	16	1.600	40.64	1.732	43.99	0.066	1.68	1.466	37.24	0.130	3.30			
68665-016		36	36	17	1.700	43.18	1.832	46.53	0.066	1.68	1.566	39.78	0.130	3.30			
68665-017		38	38	18	1.800	45.72	1.932	49.07	0.066	1.68	1.666	42.32	0.130	3.30			
68665-018		40	40	19	1.900	48.26	2.032	51.61	0.066	1.68	1.766	44.86	0.130	3.30			
68665-019		42	42	20	2.000	50.80	2.132	54.15	0.066	1.68	1.866	47.40	0.130	3.30			
68665-020		44	44	21	2.100	53.34	2.232	56.69	0.066	1.68	1.966	49.94	0.130	3.30			
68665-021		46	46	22	2.200	55.88	2.332	59.23	0.066	1.68	2.066	52.48	0.130	3.30			
68665-022		48	48	23	2.300	58.42	2.432	61.77	0.066	1.68	2.166	55.02	0.130	3.30			
68665-023		50	50	24	2.400	60.96	2.532	64.31	0.066	1.68	2.266	57.56	0.130	3.30			
68665-024		52	52	25	2.500	63.50	2.632	66.85	0.066	1.68	2.366	60.10	0.130	3.30			
68665-025		54	54	26	2.600	66.04	2.732	69.39	0.066	1.68	2.466	62.64	0.130	3.30			
68665-026		56	56	27	2.700	68.58	2.832	71.93	0.066	1.68	2.566	65.18	0.130	3.30			
68665-027		58	58	28	2.800	71.12	2.932	74.47	0.066	1.68	2.666	67.72	0.130	3.30			
68665-028		60	60	29	2.900	73.66	3.032	77.01	0.066	1.68	2.766	70.26	0.130	3.30			
68665-029		62	62	30	3.000	76.20	3.132	79.55	0.066	1.68	2.866	72.80	0.130	3.30			
68665-030		64	64	31	3.100	78.74	3.232	82.09	0.066	1.68	2.966	75.34	0.130	3.30			
68665-031		66	66	32	3.200	81.28	3.332	84.63	0.066	1.68	3.066	77.88	0.130	3.30			
68665-032		68	68	33	3.300	83.82	3.432	87.17	0.066	1.68	3.166	80.42	0.130	3.30			
68665-033		70	70	34	3.400	86.36	3.532	89.71	0.066	1.68	3.266	82.96	0.130	3.30			
68665-034		72	72	35	3.500	88.90	3.632	92.25	0.066	1.68	3.366	85.50	0.130	3.30	15u"/0.60 GXT	----	----

mat'l. code				tolerances unless otherwise specified				CUSTOMER COPY		 www.fciconnect.com		
ltr	ecn no	dr	date	linear	.XX ±.01/.X±.3			projection		title		
G					.XXX ±.005/.XX±.13					STRAIGHT HEADER FOR ROUND WIRE RECEPTACLE		
					.XXXX ±.0020/.XXX±.051					product family HEADER		
				angles	0° ±2°			 INCH/MM scale 1:2.5	size		code	
				dr	S. ROYER	3/7/90	dwg no		68665		—	
				enr	L. FYE	3/7/90					sheet	
				chr	L. FYE	3/7/90					3 of	
				appd	H.SUNDY	3/7/90						
sheet index	revision sheet											

Tous droits strictement reserves. Reproduction ou communication a des tiers interdite sous quelque forme que ce soit sans autorisation ecrite du proprietaire. Propriete de c FCI. Droits de reproduction FCI.



PRODUCT NO		NO. OF		A	DIM B	DIM B	DIM C	DIM C	REAR SLOT VIEW G-G				DIM F	DIM F	TERMINAL	POL. POS	
NOTE	10	POS	PINS	SPACES	ENGLISH	METRIC	ENGLISH	METRIC	ENGLISH	METRIC	ENGLISH	METRIC	ENGLISH	METRIC	PLATING	ROW A	ROW B
68665-035		6	6	2	0.200	5.08	0.332	8.43	0.066	1.68	0.000	0.00	0.155	3.94	15u"/0.60 GXT	-----	-----
68665-036		8	8	3	0.300	7.62	0.432	10.97	0.066	1.68	0.000	0.00	0.155	3.94			
68665-037		10	10	4	0.400	10.16	0.532	13.51	0.166	4.22	0.000	0.00	0.155	3.94			
68665-038		12	12	5	0.500	12.70	0.632	16.05	0.166	4.22	0.000	0.00	0.155	3.94			
68665-039		14	14	6	0.600	15.24	0.732	18.59	0.266	6.76	0.000	0.00	0.155	3.94			
68665-040		16	16	7	0.700	17.78	0.832	21.13	0.266	6.76	0.000	0.00	0.155	3.94			
68665-041		18	18	8	0.800	20.32	0.932	23.67	0.366	9.30	0.000	0.00	0.155	3.94			
68665-042		20	20	9	0.900	22.86	1.032	26.21	0.066	1.68	0.766	19.46	0.155	3.94			
68665-043		22	22	10	1.000	25.40	1.132	28.75	0.066	1.68	0.866	22.00	0.155	3.94			
68665-044		24	24	11	1.100	27.94	1.232	31.29	0.066	1.68	0.966	24.54	0.155	3.94			
68665-045		26	26	12	1.200	30.48	1.332	33.83	0.066	1.68	1.066	27.08	0.155	3.94			
68665-046		28	28	13	1.300	33.02	1.432	36.37	0.066	1.68	1.166	29.62	0.155	3.94			
68665-047		30	30	14	1.400	35.56	1.532	38.91	0.066	1.68	1.266	32.16	0.155	3.94			
68665-048		32	32	15	1.500	38.10	1.632	41.45	0.066	1.68	1.366	34.70	0.155	3.94			
68665-049		34	34	16	1.600	40.64	1.732	43.99	0.066	1.68	1.466	37.24	0.155	3.94			
68665-050		36	36	17	1.700	43.18	1.832	46.53	0.066	1.68	1.566	39.78	0.155	3.94			
68665-051		38	38	18	1.800	45.72	1.932	49.07	0.066	1.68	1.666	42.32	0.155	3.94			
68665-052		40	40	19	1.900	48.26	2.032	51.61	0.066	1.68	1.766	44.86	0.155	3.94			
68665-053		42	42	20	2.000	50.80	2.132	54.15	0.066	1.68	1.866	47.40	0.155	3.94			
68665-054		44	44	21	2.100	53.34	2.232	56.69	0.066	1.68	1.966	49.94	0.155	3.94			
68665-055		46	46	22	2.200	55.88	2.332	59.23	0.066	1.68	2.066	52.48	0.155	3.94			
68665-056		48	48	23	2.300	58.42	2.432	61.77	0.066	1.68	2.166	55.02	0.155	3.94			
68665-057		50	50	24	2.400	60.96	2.532	64.31	0.066	1.68	2.266	57.56	0.155	3.94			
68665-058		52	52	25	2.500	63.50	2.632	66.85	0.066	1.68	2.366	60.10	0.155	3.94			
68665-059		54	54	26	2.600	66.04	2.732	69.39	0.066	1.68	2.466	62.64	0.155	3.94			
68665-060		56	56	27	2.700	68.58	2.832	71.93	0.066	1.68	2.566	65.18	0.155	3.94			
68665-061		58	58	28	2.800	71.12	2.932	74.47	0.066	1.68	2.666	67.72	0.155	3.94			
68665-062		60	60	29	2.900	73.66	3.032	77.01	0.066	1.68	2.766	70.26	0.155	3.94			
68665-063		62	62	30	3.000	76.20	3.132	79.55	0.066	1.68	2.866	72.80	0.155	3.94			
68665-064		64	64	31	3.100	78.74	3.232	82.09	0.066	1.68	2.966	75.34	0.155	3.94			
68665-065		66	66	32	3.200	81.28	3.332	84.63	0.066	1.68	3.066	77.88	0.155	3.94			
68665-066		68	68	33	3.300	83.82	3.432	87.17	0.066	1.68	3.166	80.42	0.155	3.94			
68665-067		70	70	34	3.400	86.36	3.532	89.71	0.066	1.68	3.266	82.96	0.155	3.94			
68665-068		72	72	35	3.500	88.90	3.632	92.25	0.066	1.68	3.366	85.50	0.155	3.94	15u"/0.60 GXT	-----	-----

All rights strictly reserved. Reproduction or issue to third parties in any form whatever is not permitted without written authority from the proprietor. Property of FCI. Copyright FCI.

B

mat'l. code		-		tolerances unless otherwise specified		CUSTOMER COPY		 www.fciconnect.com		
ltr	ecn no	dr	date	linear	.XX ±.01/.X±.3	projection		title		
G					.XXX ±.005/.XX±.13			STRAIGHT HEADER FOR ROUND WIRE RECEPTACLE		
					.XXXX ±.0020/.XXX±.051			product family HEADER		
				angles	0° ±2°	 INCH/MM	 scale	size  dwg no		
				dr	S. ROYER			3/7/90	A 68665	
				engr	L. FYE			3/7/90	code -	
				chr	L. FYE			3/7/90	sheet 4 of	
				appd	H.SUNDY	3/7/90	cage code			
sheet index	revision sheet						22526			

B

Tous droits strictement reserves. Reproduction ou communication a des tiers interdite sous quelque forme que ce soit sans autorisation ecrite du proprietaire. Propriete de c FCI. Droits de reproduction FCI.



All rights strictly reserved. Reproduction or issue to third parties in any form whatever is not permitted without written authority from the proprietor. Property of FCI. Copyright FCI.

PRODUCT NO		NO.OF		A	DIM B	DIM B	DIM C	REAR SLOT VIEW G-G				DIM F	DIM F	TERMINAL	POL. POS		
NOTE	10	POS	PINS	SPACES	ENGLISH	METRIC	ENGLISH	METRIC	ENGLISH	METRIC	ENGLISH	METRIC	ENGLISH	METRIC	PLATING	ROW A	ROW B
68665-069		6	6	2	0.200	5.08	0.332	8.43	0.066	1.68	0.000	0.00	0.200	5.08	15u"/0.60 GXT	----	----
68665-070		8	8	3	0.300	7.62	0.432	10.97	0.066	1.68	0.000	0.00	0.200	5.08			
68665-071		10	10	4	0.400	10.16	0.532	13.51	0.166	4.22	0.000	0.00	0.200	5.08			
68665-072		12	12	5	0.500	12.70	0.632	16.05	0.166	4.22	0.000	0.00	0.200	5.08			
68665-073		14	14	6	0.600	15.24	0.732	18.59	0.266	6.76	0.000	0.00	0.200	5.08			
68665-074		16	16	7	0.700	17.78	0.832	21.13	0.266	6.76	0.000	0.00	0.200	5.08			
68665-075		18	18	8	0.800	20.32	0.932	23.67	0.366	9.30	0.000	0.00	0.200	5.08			
68665-076		20	20	9	0.900	22.86	1.032	26.21	0.066	1.68	0.766	19.46	0.200	5.08			
68665-077		22	22	10	1.000	25.40	1.132	28.75	0.066	1.68	0.866	22.00	0.200	5.08			
68665-078		24	24	11	1.100	27.94	1.232	31.29	0.066	1.68	0.966	24.54	0.200	5.08			
68665-079		26	26	12	1.200	30.48	1.332	33.83	0.066	1.68	1.066	27.08	0.200	5.08			
68665-080		28	28	13	1.300	33.02	1.432	36.37	0.066	1.68	1.166	29.62	0.200	5.08			
68665-081		30	30	14	1.400	35.56	1.532	38.91	0.066	1.68	1.266	32.16	0.200	5.08			
68665-082		32	32	15	1.500	38.10	1.632	41.45	0.066	1.68	1.366	34.70	0.200	5.08			
68665-083		34	34	16	1.600	40.64	1.732	43.99	0.066	1.68	1.466	37.24	0.200	5.08			
68665-084		36	36	17	1.700	43.18	1.832	46.53	0.066	1.68	1.566	39.78	0.200	5.08			
68665-085		38	38	18	1.800	45.72	1.932	49.07	0.066	1.68	1.666	42.32	0.200	5.08			
68665-086		40	40	19	1.900	48.26	2.032	51.61	0.066	1.68	1.766	44.86	0.200	5.08			
68665-087		42	42	20	2.000	50.80	2.132	54.15	0.066	1.68	1.866	47.40	0.200	5.08			
68665-088		44	44	21	2.100	53.34	2.232	56.69	0.066	1.68	1.966	49.94	0.200	5.08			
68665-089		46	46	22	2.200	55.88	2.332	59.23	0.066	1.68	2.066	52.48	0.200	5.08			
68665-090		48	48	23	2.300	58.42	2.432	61.77	0.066	1.68	2.166	55.02	0.200	5.08			
68665-091		50	50	24	2.400	60.96	2.532	64.31	0.066	1.68	2.266	57.56	0.200	5.08			
68665-092		52	52	25	2.500	63.50	2.632	66.85	0.066	1.68	2.366	60.10	0.200	5.08			
68665-093		54	54	26	2.600	66.04	2.732	69.39	0.066	1.68	2.466	62.64	0.200	5.08			
68665-094		56	56	27	2.700	68.58	2.832	71.93	0.066	1.68	2.566	65.18	0.200	5.08			
68665-095		58	58	28	2.800	71.12	2.932	74.47	0.066	1.68	2.666	67.72	0.200	5.08			
68665-096		60	60	29	2.900	73.66	3.032	77.01	0.066	1.68	2.766	70.26	0.200	5.08			
68665-097		62	62	30	3.000	76.20	3.132	79.55	0.066	1.68	2.866	72.80	0.200	5.08			
68665-098		64	64	31	3.100	78.74	3.232	82.09	0.066	1.68	2.966	75.34	0.200	5.08			
68665-099		66	66	32	3.200	81.28	3.332	84.63	0.066	1.68	3.066	77.88	0.200	5.08			
68665-100		68	68	33	3.300	83.82	3.432	87.17	0.066	1.68	3.166	80.42	0.200	5.08			
68665-101		70	70	34	3.400	86.36	3.532	89.71	0.066	1.68	3.266	82.96	0.200	5.08			
68665-102		72	72	35	3.500	88.90	3.632	92.25	0.066	1.68	3.366	85.50	0.200	5.08	15u"/0.60 GXT	----	----

mat'l. code		-		tolerances unless otherwise specified		CUSTOMER COPY		 www.fciconnect.com			
ltr	ecn no	dr	date	linear	.xx ±.01/.X±.3	projection		title			
G					.xxx ±.005/.xx±.13			STRAIGHT HEADER FOR ROUND WIRE RECEPTACLE		product family	code
					.xxxx ±.0020/.xxx±.051			HEADER		size  dwg no	-
				angles	0° ±2°	 INCH/MM scale 1:2.5		A 68665			
				dr	S. ROYER 3/7/90			sheet index		revision sheet	
				enr	L. FYE 3/7/90			cage code		22526	
				chr	L. FYE 3/7/90			sheet 5 of			
				appd	H.SUNDY 3/7/90						

Tous droits strictement reserves. Reproduction ou communication a des tiers interdite sous quelque forme que ce soit sans autorisation ecrite du proprietaire. Propriete de c FCI. Droits de reproduction FCI.



All rights strictly reserved. Reproduction or issue to third parties in any form whatever is not permitted without written authority from the proprietor. Property of FCI. Copyright FCI.

PRODUCT NO	NO.OF		A	DIM B	DIM B	DIM C	DIM C	REAR SLOT VIEW G-G				DIM F	DIM F	TERMINAL	POL. POS	
	NOTE 10	POS	PINS	SPACES	ENGLISH	METRIC	ENGLISH	METRIC	ENGLISH	METRIC	ENGLISH	METRIC	ENGLISH	METRIC	PLATING	ROW A
68665-103	6	6	2	0.200	5.08	0.332	8.43	0.066	1.68	0.000	0.00	0.380	9.65	15u"/0.60 GXT	----	----
68665-104	8	8	3	0.300	7.62	0.432	10.97	0.066	1.68	0.000	0.00	0.380	9.65			
68665-105	12	12	5	0.500	12.70	0.632	16.05	0.166	4.22	0.000	0.00	0.380	9.65			
68665-106	16	16	7	0.700	17.78	0.832	21.13	0.266	6.76	0.000	0.00	0.380	6.65			
68665-107	20	20	9	0.900	22.86	1.032	26.21	0.066	1.68	0.766	19.46	0.380	9.65		----	----
68665-108	14	13	6	0.600	15.24	0.732	18.59	0.266	6.76	0.000	0.00	0.130	3.30		1	
68665-109	16	15	7	0.700	17.78	.832	21.13	0.266	6.76	0.000	0.00	0.130	3.30		5	-
68665-110	16	15	7	0.700	17.78	.832	21.13	0.266	6.76	0.000	0.00	0.130	3.30		-	6
68665-111	20	17	9	0.900	22.86	1.032	26.21	0.066	1.68	0.766	19.46	0.130	3.30	15u"/0.60 GXT	1,7	1
68665-112	10	9	4	0.400	10.16	.532	13.51	0.166	4.22	0.000	0.00	0.130	3.30	15u"/0.60 GXT	-	3

A

A

B

B

mat'l. code		-		tolerances unless otherwise specified		CUSTOMER COPY		 www.fciconnect.com		
ltr	ecn no	dr	date	linear	.xx ±.01/.x±.3		projection	 title STRAIGHT HEADER FOR ROUND WIRE RECEPTACLE		
G					.xxx ±.005/.xx±.13					
					.xxxx ±.0020/.xxx±.051					
				angles	0° ±2°		 INCH/MM scale 1:2.5	product family		
				dr	S. ROYER	3/7/90		HEADER		code
				enr	L. FYE	3/7/90		size  dwg no		-
				chr	L. FYE	3/7/90		A		68665
				appd	H.SUNDY	3/7/90			sheet	
sheet index	revision sheet									