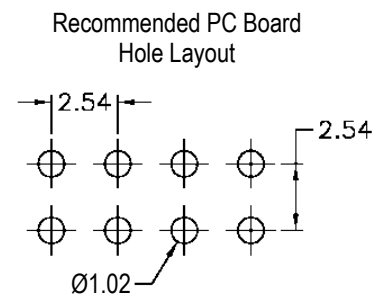
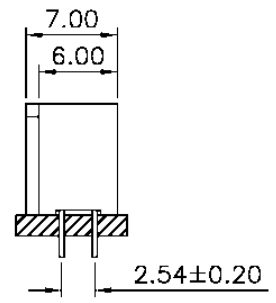
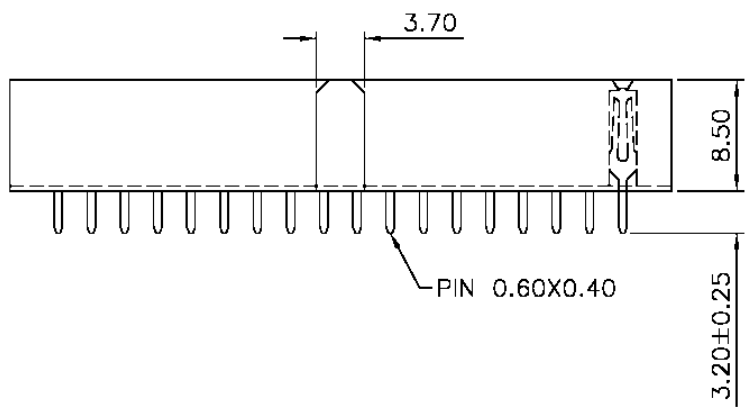


**SPECIFICATIONS**  
 Current rating: 3 amps  
 Contact material: Phosphor bronze  
 Contact plating: Tin, gold or duplex  
 Contact resistance: 20 milliohms max.  
 Insulator material: Polyester, UL94V-0  
 Insulator resistance: 1,000 megohms  
 Withstanding: 600VAC for 1 min.  
 Operating temperature: -40°C to +105°C



Series	Rows	Options	Contacts	Plating	Special Options
ARS	XX	XX	XX	XX	XX
Receptacle strip	01=Single row 02=Dual row 03=Single row R/A 04=Dual row R/A XR=End positions removed	[blank]=None DE=Dual entry BE=Bottom entry SE=Side entry	Single row: 3-36 Dual row: 6-72	TN=Tin GD=Gold SG=Duplex	[blank]=None SM=Surface mount RT=Retention tails P=Polarized

RoHS compliant

Rev.	Description	Date	Approved	Drawing	Name	Date
				Approved	Howard	08/10/99
				Checked	Lizzy	08/10/99
				Drawn	Tina	08/10/99
				0.0 ± 0.35	0.00 ± 0.20	Angles ± 3'
				UNIT: mm		

**Central Components Manufacturing**  
 440 Lincoln Blvd., Middlesex, New Jersey 08846  
 Phone 732 469-5720 888 288-5152 Fax 732 469-1919

Part No.: **ARS-02XR-XX-XX-P**

Description: Receptacle strip, .100" pitch, dual row, polarized, 4 end positions removed