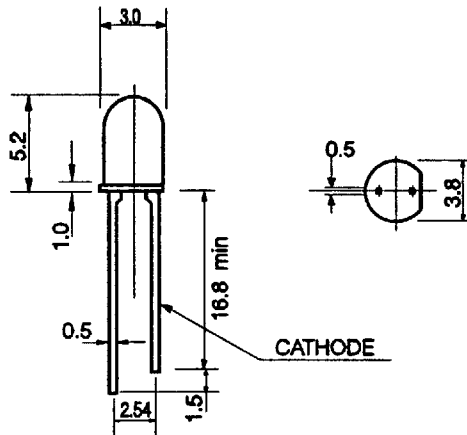


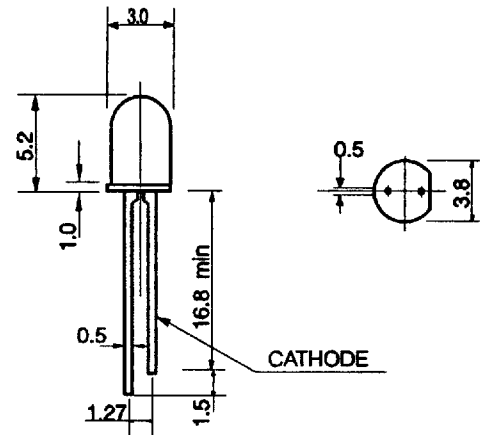
**T-1 DIFFUSED SOLID STATE LAMPS****HIGH EFFICIENCY RED - ISL1300, 1301, 1302, ISL5774****YELLOW - ISL1400, 1401, 1402****HIGH EFFICIENCY GREEN - ISL1503, ISL1523****BRIGHT RED - ISL1000, 1002, ISL5074****PACKAGE DIMENSIONS**

ISL1000  
ISL1002  
ISL1300  
ISL1301  
ISL1302  
ISL1400  
ISL1401  
ISL1402  
ISL1503  
ISL1523



(All Dimensions in mm)

ISL5074  
ISL5774



(All Dimensions in mm)

**DESCRIPTION**

This family of T-1 lamps is designed for a wide range of uses in general purpose indicator applications. They yield superior light output with low power requirements and have wide viewing angles. Intensity choices are available for increased design flexibility.

The ISL1000 & ISL1002 are Bright Red LED Lamps with diffused lenses and typical Luminous intensities of 1.0 mcd & 2.5 mcd at 20mA respectively. The ISL5074 is similar to the ISL1002 but with a 0.05" lead spacing.

The ISL1300, ISL1301 & ISL1302 are High Efficiency Red LED Lamps with diffused lenses and typical luminous intensities of 2.0, 2.5 and 4.0 mcd at 10mA respectively. The ISL5774 is similar to the ISL1301 but with a 0.05" lead spacing.

The ISL1400, ISL1401 & ISL1402 are Yellow LED Lamps with diffused lenses and typical luminous intensities of 2.0, 3.0 & 4.0 mcd at 10mA respectively.

The ISL1503 & 1523 are High Efficiency Green LED lamps with diffused lenses and typical luminous intensities of 2.0 & 4.0 mcd at 10mA respectively.

**FEATURES**

- High Intensity
- Choice of Colours
- Popular T-1 Package
- Wide Viewing Angle
- Solid State Reliability
- Low Power Requirements

**APPLICATIONS**

- Computers
- Control Systems
- Test Equipment
- Instrumentation
- Consumer Electronics
- Automotive

**ABSOLUTE MAXIMUM RATINGS (Ta=25°C)**

Power Dissipation	120mW
Derate Linearly from 25°C	1.6mW/°C
Storage and Operating Temperatures	-55°C to +100°C
Lead Soldering time at 260°C	5 seconds
Continuous Forward Current	30mA
Peak Forward Current (10us pulse)	500mA
Reverse Voltage	5.0V

**ISOCOM COMPONENTS LTD.**

Unit 25B, Park View Road West, Park View Industrial Estate, Brenda Road,  
Hartlepool, Cleveland, England, TS25 1YD.

Tel: (0429) 863609. Fax: (0429) 863581. Telex: 587712 ISCOMPG.

**ISOCOM INC.**

256 East Hamilton Avenue, Suite H, Campbell, California, 95008, U.S.A.

Tel: (408) 370 2212. Fax: (408) 370 2309.

DA-90004-AAS/02

ELECTRICAL/OPTICAL CHARACTERISTICS AT Ta = 25°C

PARAMETER	Luminous Intensity Iv (min) mcd	Forward Voltage Vf (max) V	Peak Wave-length (Typ) nm	Spectral line Halfwidth nm	Capacitance C (Typ.) pF	Reverse Voltage Vr (min) V	Half Angle (Total) deg.	Lens (diffused)
Units								
CONDITIONS	If(mA) 10 20	If(mA) 20	If(mA) 10 20	If(mA) 10 20	Vf=0V f=1MHz	Ir(uA) 100		
ISL1000	0.6	3.0	700	60	100	5.0	65	Red
ISL1002	1.5	3.0	700	60	100	5.0	65	Red
ISL5074	1.5	3.0	700	60	100	5.0	65	Red
ISL1300	1.0	3.0	630	20	11	5.0	65	Red
ISL1301	2.0	3.0	630	20	11	5.0	65	Red
ISL1302	3.0	3.0	630	20	11	5.0	65	Red
ISL5774	1.5	3.0	630	20	11	5.0	65	Red
ISL1400	1.0	3.0	585	20	15	5.0	65	Yellow
ISL1401	2.0	3.0	585	20	15	5.0	65	Yellow
ISL1402	3.0	3.0	585	20	15	5.0	65	Yellow
ISL1503	1.0	3.0	565	15	18	5.0	65	Green
ISL1523	2.6	3.0	565		18	5.0	65	Green

Fig. 1 Forward Current vs. Forward Voltage

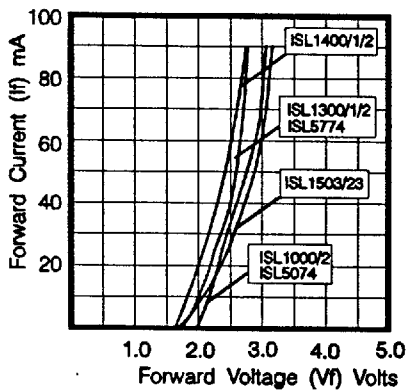


Fig. 2 Luminous Intensity vs Angular Displacement

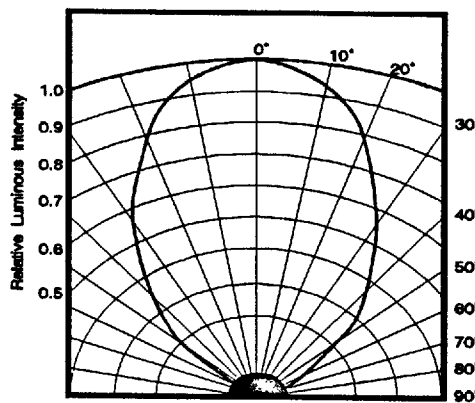


Fig. 3 Luminous Intensity vs Forward Current

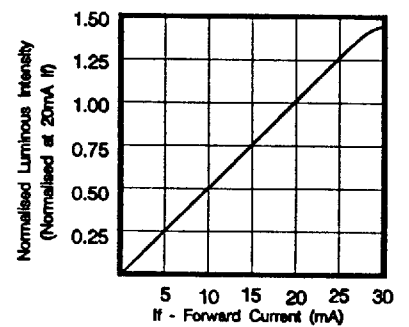


Fig. 4 Relative Intensity vs Wavelength

