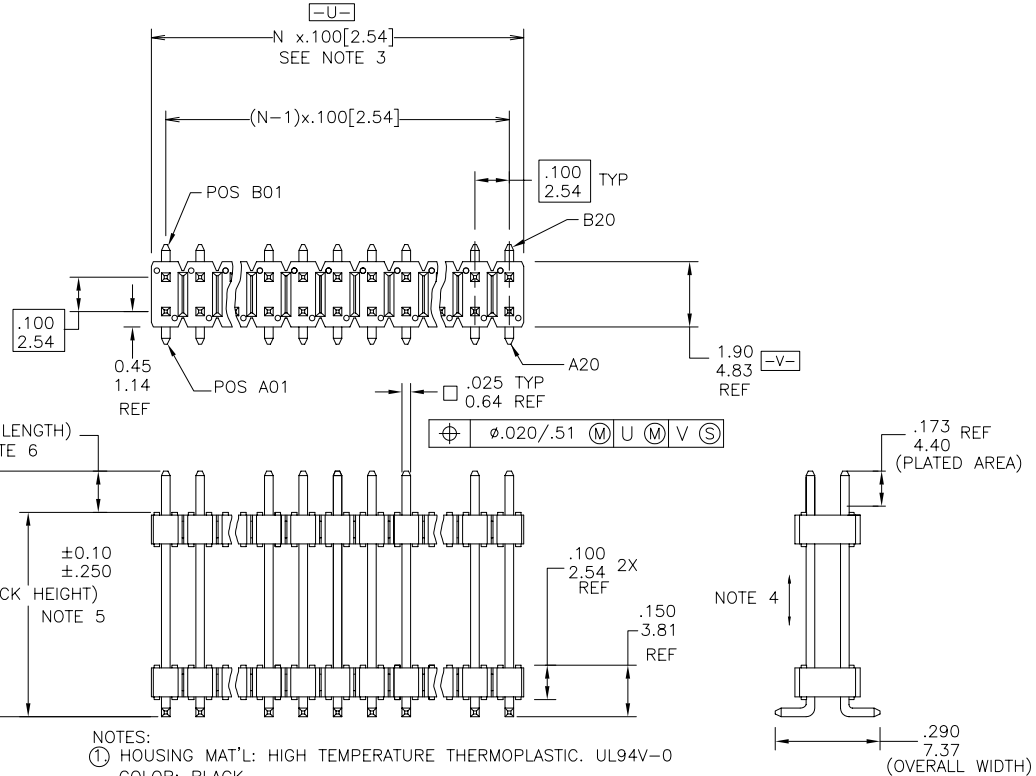


PRODUCT NUMBER  
5 6 2 4 2 - X X X - X X - X X X X

PLATING  
S= 15μ" [0.38μm] GOLD ON CONTACT AREA  
120μ" [3.0μm] TIN/LEAD ON TAIL  
G= 30μ" [0.76μm] GOLD ON CONTACT AREA  
120μ" [3.0μm] TIN/LEAD ON TAIL  
T= 120μ" [3.0μm] TIN/LEAD ON CONTACT AREA AND ON TAIL (SEE NOTE 9).

STACK HEIGHT  
NOTE 5  
POSITIONS PER ROW  
02 TO 20

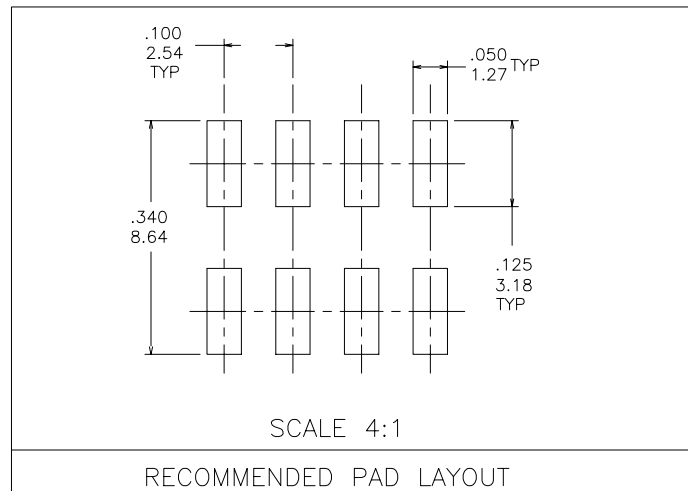
| PIN STYLE | OAL         |
|-----------|-------------|
| 06        | 0.380/9.65  |
| 10        | 0.415/10.54 |
| 11        | 0.465/11.81 |
| 12        | 0.565/14.35 |
| 14        | 0.665/16.90 |
| 16        | 0.765/19.43 |
| 18        | 0.865/21.97 |



OAL (OVERALL LENGTH) REF  
(STACK HEIGHT) NOTE 5

□ .005/1 [0.12/2.54]

- NOTES:
- HOUSING MAT'L: HIGH TEMPERATURE THERMOPLASTIC. UL94V-0  
COLOR: BLACK
  - PIN MATERIAL: PHOSPHOR-BRONZE
  - TO DETERMINE DIMENSIONS: N = NUMBER OF POSITIONS PER ROW.  
EXAMPLE: 10 POS., N x .100 [2.54] = 1.00 [25.40].
  - 2LBS/0.9KG MIN. PIN RETENTION IN EITHER DIRECTION.
  - STACK HEIGHT IS DETERMINED BY CUSTOMER APPLICATION REQUIREMENTS.  
STACKER HEIGHT EXAMPLE:  $0 \underline{5} \underline{0} \underline{0} = .500$  IN.
  - POST LENGTH IS DETERMINED BY: (OAL) - (STACKER HT.) = POST LENGTH
  - PACKAGED IN BAGS.
  - UNDERPLATING: 50μ" / 1.27μm Ni.
  - PIN TIPS ON TIN/LEAD PLATED PRODUCT MAY HAVE BARE METAL ON TWO SIDES, BOTH ENDS.



|                                |                |                       |                                  |                       |                                       |
|--------------------------------|----------------|-----------------------|----------------------------------|-----------------------|---------------------------------------|
| mat'l. code<br>SEE NOTES 1 & 2 |                | surface<br>ISO 1302 ✓ | tolerance<br>ISO 406<br>ISO 1101 | projection<br>INCH/MM | product family<br>BERGSTIK            |
| ltr                            | ecn            | no                    | dr                               | date                  | tolerances unless otherwise specified |
| A                              | V92812         | DAI                   | 08/24/99                         | angles                | .XX±.01/0.3                           |
| B                              | v21476         | GIP                   | 09/17/02                         | linear                | .xxx±.005/0.13                        |
| C                              | V03-0475       | DAI                   | 06/17/03                         | 0°±2'                 | .xxx±.0020/0.051                      |
| D                              | M06-0268       | MHT                   | 7/17/06                          | dr                    | D.INGRAM 05/17/99                     |
|                                |                |                       |                                  | enr                   | H.SUNDY 07/21/99                      |
|                                |                |                       |                                  | chr                   | H.SUNDY 07/21/99                      |
|                                |                |                       |                                  | appd                  | H.SUNDY 07/21/99                      |
| sheet index                    | revision sheet | D                     | D                                |                       |                                       |
|                                | 1              | 2                     |                                  |                       |                                       |



title  
UNSHROUDED HDR. D/R  
STACK ,THRU HOLE

dwg no  
56242

sheet 1 of 1 size  
A3

type  
Product Customer Drawing