

MAJOR LEAGUE ELECTRONICS

.100" c.l. Socket Strips-Right Angle Using .025"sq. Pins



.100"

SSHQR-1 [] - [] - [] - [] - [] - [] - [] - []

H High Temp.

Pins per row 01-50

Singles S
Doubles D

Lead Style Options - Tail Length

Single	Double	
(2,54) .100	(2,54) .100	02
(7,62) .300	(7,62) .300	04
(12,45) .490	N/A	06

(Metric Dimensions)

Low Insertion (Not available in Tin Plating) L

Plating Options

G = 10μ in gold in contact area, gold flash on tail
 GT = 10μ in gold in contact area, 200μ in tin/lead on tail
 H = 30μ gold on contact area, 200μ in tin/lead on tail
 T = 200μ in tin/lead over entire pin

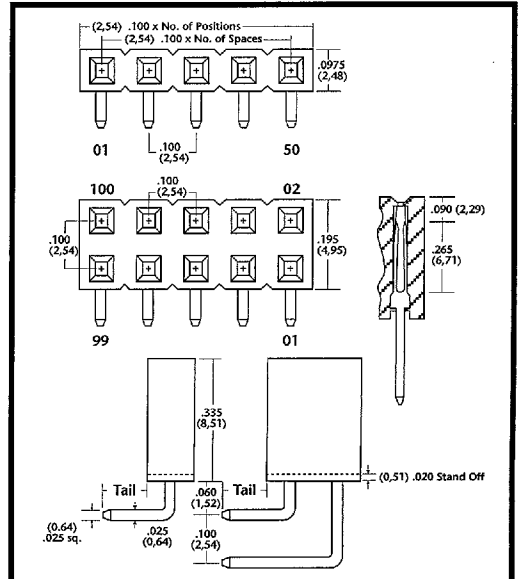
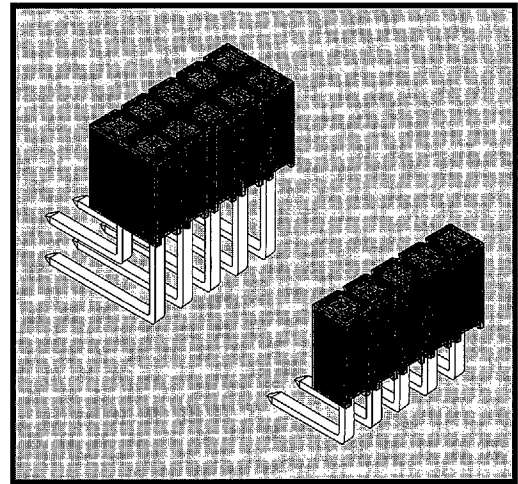
Other plating options available upon request

Lock Tight Option LT

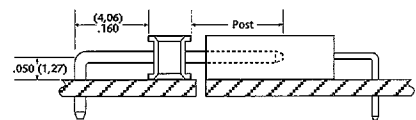
Two tails per strip are crimped in opposing directions on or near the centerline. Must have a minimum tail N/A with Single Row 1 or 2 positions & Double Row 1 position. Recommended hole size of .040".

Position for Polarization Option 001-100

Mates with: TSHS, TSHR, TSHC, BSTS, BSTC, TSCHRE, LTSHR, LTSHRE, BSTCM, LTSHCRE, TSHRE, TSHSM, TSHCR



APPLICATION



Right Angle SSHQR Socket plugged into Low Profile Elevated Right Angle Header

Product cut to specific sizes is noncancellable/nonreturnable. Parts are subject to change without notice.

Materials & Performance Specifications

	STANDARD	HIGH TEMPERATURE
Insulator	Black, glass filled, polyester	High temperature thermoplastic
Terminal	Phosphor Bronze	Phosphor Bronze
Insulation Resistance	5,000M Ω minimum	5,000M Ω minimum
Flammability	UL 94V-O	UL 94V-O
Temperature Range	-65°C to +125°C	-65°C to +250°C
Current Rating	1 ampere	1 ampere
Plating	All Plating Options over 50μ in Ni	All Plating Options over 50μ in Ni



Delivery On Time, Every Time... Or The Order's Free!

D 24F 9019296 0000030 5T0 Phone: 812-944-7244 • Facsimile: 812-944-7268 • Email: mle@iglou.com