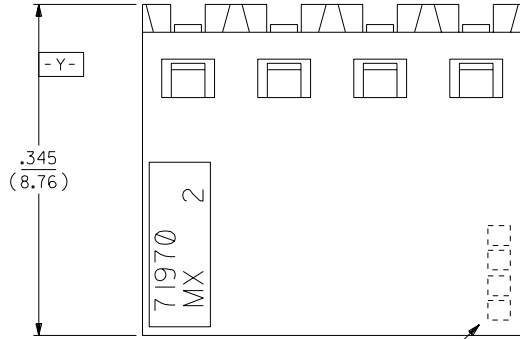
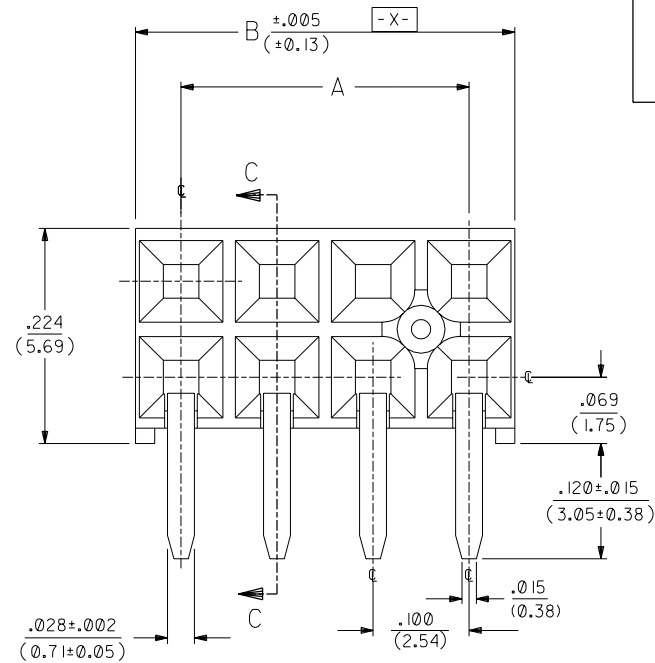


NOTE FOR LEAD FREE CONVERSION:

THE PRIMARY SHIPPING CARTON WILL BE LABELED "COMPLIANT TO ROHS DIRECTIVE 2002/95/EC AND ELV ANNEX II OF DIRECTIVE 2000/53/EC". CARTONS WITHOUT THIS LABEL MAY CONTAIN PRODUCT WITH LEAD.

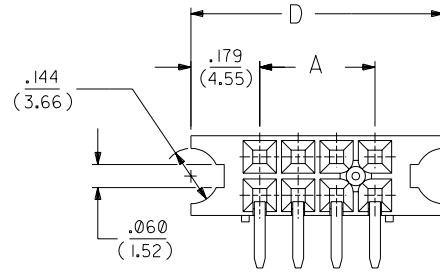
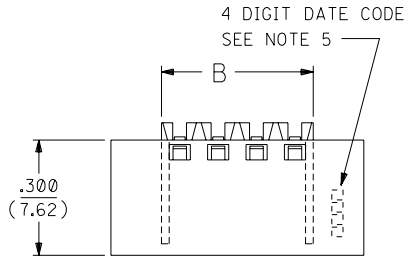


4 DIGIT DATE CODE
SEE NOTE 5



⊕ ∅ .015 ⊖ TAIL TO TAIL
⊕ ∅ .020 ⊖ X ⊖ Y ⊖ TAIL TO INSULATOR

OPTION "A" ASSEMBLY
STANDARD HOUSING

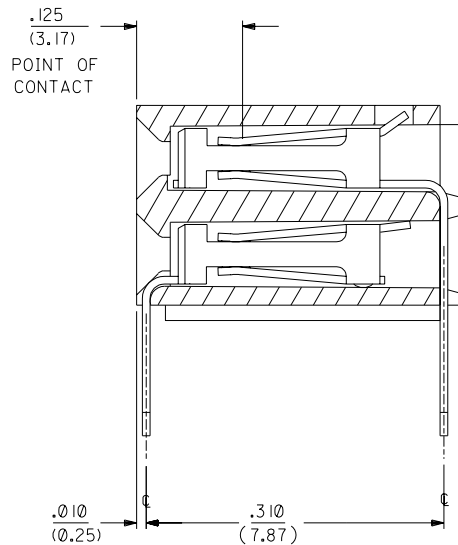


OPTION "B" ASSEMBLY
STD. HOUSING W/MOUNTING EARS
SCALE 4:1

REFER TO OPT. A FOR ALL OTHER INFORMATION

OPTION "J" ASSEMBLY

OPTION "J" IS THE SAME AS OPTION "B" EXCEPT
DATE CODE IS NOT STAMPED ON HOUSING.



SECTION C-C

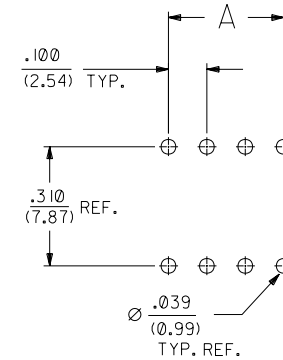
71973

NOTES:

- 1.) MATERIAL -
INSULATOR - LCP, UL 94V-0, COLOR BLACK
CONTACTS - PHOSPHOR BRONZE
- 2.) SEE SHT. 5 & 6 FOR CHART DIMENSIONS AND EDP NO.'S
- 3.) RECOMMENDED MATING PIN LENGTH:
LOWER ROW - .200" MIN., .285" MAX.
UPPER ROW - .200" MIN.
- 4.) REFER TO PRODUCT SPECIFICATION PS-71973-9999 FOR PERFORMANCE DATA
- 5.) MANUFACTURED DATE CODE - YEAR, WEEK.
- 6.) PACKAGING: FOR THIS PRODUCT IN TUBES SEE SHT. 6 & 7
FOR THIS PRODUCT IN TRAYS SEE SHT. 8 & 9

FINISHES

- 15 GOLD .000015 MINIMUM GOLD PLATE IN SELECT AREA OVER .000050 MINIMUM NICKEL UNDERPLATE OVER-ALL WITH .000075 MINIMUM TIN PLATE IN SELECT AREA.
- 30 GOLD .000030 MINIMUM GOLD PLATE IN SELECT AREA OVER .000050 MINIMUM NICKEL UNDERPLATE OVER-ALL WITH .000075 MINIMUM TIN PLATE IN SELECT AREA.
- 50 GOLD .000050 MINIMUM GOLD PLATE IN SELECT AREA OVER .000050 MINIMUM NICKEL UNDERPLATE OVER-ALL WITH .000100 MINIMUM TIN PLATE IN SELECT AREA.



RECOMMENDED P.C.B.
LAYOUT

SCALE 4:1

22	H		
21	H	H	LEAD FREE CONV ECN UCP2004-2133 RKADAMS 04/04/27
20	H	G	ADD: -9999 TO PS ECR# U2000-0973 JG12OWSK1 00/05/24
19	H		CHG PLT OPT "J" ECR# U7-0498 MCFARLAN 96/10/30
18	H	F2	
17	H		
16	H		
15	H	F1	ADDED OPT. "J" PER U51300 95/06/29 RB
14	H		
13	H	F	ADDED OPT. "I" PER ECR # U50914 03/28/95 CAC
12	H		
11	H	E	ADD RETENT DIMPLE PER U30344 04/02/93 MURPHY
10	H		
9	H	D	DEL GPAX ADD TRAYS PER ECR U20889 10/29/92 MURPHY
8	H		
7	H	C	REV. PKG. REL EDP5 PER ECR U2 0374 03/05/92 MURPHY
6	H		
5	H	B1	REL. -1204/1265 PER ECR U2 0282 02/20/92 MURPHY
4	H		
3	H	B	REDIM. TRUE POS. PER ECR U12321 01/13/92 MURPHY
2	H		
1	H	A	RENAMED DWG. NO. PER ECR U11813 10-21-91 MURPHY

DIMENSIONS SHOWN (METRIC) INCH		▽ = 0	▽ = 0	REVISE ONLY ON CAD SYSTEM	
UNLESS OTHERWISE SPECIFIED TOLERANCES: ANGULAR ± 1/2°		TITLE			
3 PLACE ± --- ---		RECEPTACLE-RIGHT ANGLE			
2 PLACE ± .01 ± ---		.120" PC TAIL, WITHOUT LOWER			
1 PLACE --- ± 0.25		ROW PINSTOP - .100" GRID			
DRAFT WHERE APPLICABLE MUST REMAIN WITHIN DIMENSIONS		MOLEX INCORPORATED		SHEET NO. DATE	
		LITSE, ILL. 60532		1 OF 22 10/21/91	
PART NO.		DRWG. NO.			
SHTS 6-9		SDA-71973-****			
DRWG. BY: DJB	CHK'D. BY: DJB	FILE NAME	THIS DRAWING CONTAINS INFORMATION THAT IS PROPRIETARY TO MOLEX INC. AND SHOULD NOT BE USED WITHOUT WRITTEN PERMISSION		
APP'D. BY: MJM	SCALE: 10:1	57197351	DCN	TC	C

NO. OF CKTS		OPTION B ASSEMBLY PACKAGED IN TUBES PER PK-70873-0139 (SEE SHEET I FOR PLATING SPECIFICATIONS)				DIMENSION		
PER ROW	TOTAL	OPT. J ASSY 15 GOLD	15 GOLD	30 GOLD	50 GOLD	A	B	D
						---	---	---
4	8		71973-1004	71973-1104	71973-1204	.300 (7.62)	.395 (10.03)	.658 (16.71)
5	10		71973-1005	71973-1105	71973-1205	.400 (10.16)	.495 (12.57)	.758 (19.25)
6	12		71973-1006	71973-1106	71973-1206	.500 (12.70)	.595 (15.11)	.858 (21.79)
7	14		71973-1007	71973-1107	71973-1207	.600 (15.24)	.695 (17.65)	.958 (24.33)
8	16		71973-1008	71973-1108	71973-1208	.700 (17.78)	.795 (20.19)	1.058 (26.87)
9	18		71973-1009	71973-1109	71973-1209	.800 (20.32)	.895 (22.73)	1.158 (29.41)
10	20		71973-1010	71973-1110	71973-1210	.900 (22.86)	.995 (25.27)	1.258 (31.95)
11	22		71973-1011	71973-1111	71973-1211	1.000 (25.40)	1.095 (27.81)	1.358 (34.49)
12	24		71973-1012	71973-1112	71973-1212	1.100 (27.94)	1.195 (30.35)	1.458 (37.03)
13	26		71973-1013	71973-1113	71973-1213	1.200 (30.48)	1.295 (32.89)	1.558 (39.57)
14	28		71973-1014	71973-1114	71973-1214	1.300 (33.02)	1.395 (35.43)	1.658 (42.11)
15	30	71973-1315	71973-1015	71973-1115	71973-1215	1.400 (35.56)	1.495 (37.97)	1.758 (44.65)
16	32		71973-1016	71973-1116	71973-1216	1.500 (38.10)	1.595 (40.51)	1.858 (47.19)
17	34		71973-1017	71973-1117	71973-1217	1.600 (40.64)	1.695 (43.05)	1.958 (49.73)
18	36		71973-1018	71973-1118	71973-1218	1.700 (43.18)	1.795 (45.59)	2.058 (52.27)
19	38		71973-1019	71973-1119	71973-1219	1.800 (45.72)	1.895 (48.13)	2.158 (54.81)
20	40	71973-1320	71973-1020	71973-1120	71973-1220	1.900 (48.26)	1.995 (50.67)	2.258 (57.35)
21	42		71973-1021	71973-1121	71973-1221	2.000 (50.80)	2.095 (53.21)	2.358 (59.89)
22	44		71973-1022	71973-1122	71973-1222	2.100 (53.34)	2.195 (55.75)	2.458 (62.43)
23	46		71973-1023	71973-1123	71973-1223	2.200 (55.88)	2.295 (58.29)	2.558 (64.97)
24	48		71973-1024	71973-1124	71973-1224	2.300 (58.42)	2.395 (60.83)	2.658 (67.51)
25	50		71973-1025	71973-1125	71973-1225	2.400 (60.96)	2.495 (63.37)	2.758 (70.05)
26	52		71973-1026	71973-1126	71973-1226	2.500 (63.50)	2.595 (65.91)	2.858 (72.59)
27	54		71973-1027	71973-1127	71973-1227	2.600 (66.04)	2.695 (68.45)	2.958 (75.13)
28	56		71973-1028	71973-1128	71973-1228	2.700 (68.58)	2.795 (70.99)	3.058 (77.67)
29	58		71973-1029	71973-1129	71973-1229	2.800 (71.12)	2.895 (73.53)	3.158 (80.21)
30	60		71973-1030	71973-1130	71973-1230	2.900 (73.66)	2.995 (76.07)	3.258 (82.75)
31	62		71973-1031	71973-1131	71973-1231	3.000 (76.20)	3.095 (78.61)	3.358 (85.29)
32	64		71973-1032	71973-1132	71973-1232	3.100 (78.74)	3.195 (81.15)	3.458 (87.83)
33	66		71973-1033	71973-1133	71973-1233	3.200 (81.28)	3.295 (83.69)	3.558 (90.37)

OPTION "J" IS THE SAME AS "B" EXCEPT DATE CODE IS NOT STAMPED ON HOUSING.

"X" INDICATES TOOLING IS NOT AVAILABLE

NO. OF CKTS		OPTION B ASSEMBLY PACKAGED IN TUBES PER PK-70873-0139 (SEE SHEET I FOR PLATING SPECIFICATIONS)				DIMENSION		
PER ROW	TOTAL	OPT. J ASSY 15 GOLD	15 GOLD	30 GOLD	50 GOLD	A	B	D
34	68		71973-1034	71973-1134	71973-1234	3.300 (83.82)	3.395 (86.23)	3.658 (92.91)
35	70		71973-1035	71973-1135	71973-1235	3.400 (86.36)	3.495 (88.77)	3.758 (95.45)
36	72		71973-1036	71973-1136	71973-1236	3.500 (88.90)	3.595 (91.31)	3.858 (97.99)
37	74		71973-1037	71973-1137	71973-1237	3.600 (91.44)	3.695 (93.85)	3.958 (100.53)
38	76		71973-1038	71973-1138	71973-1238	3.700 (93.98)	3.795 (96.39)	4.058 (103.07)
39	78		71973-1039	71973-1139	71973-1239	3.800 (96.52)	3.895 (98.93)	4.158 (105.61)
40	80		71973-1040	71973-1140	71973-1240	3.900 (99.06)	3.995 (101.47)	4.258 (108.15)
41	82		71973-1041	71973-1141	71973-1241	4.000 (101.60)	4.095 (104.01)	4.358 (110.69)
42	84		71973-1042	71973-1142	71973-1242	4.100 (104.14)	4.195 (106.55)	4.458 (113.23)
43	86		71973-1043	71973-1143	71973-1243	4.200 (106.68)	4.295 (109.09)	4.558 (115.77)
44	88		71973-1044	71973-1144	71973-1244	4.300 (109.22)	4.395 (111.63)	4.658 (118.31)
45	90		71973-1045	71973-1145	71973-1245	4.400 (111.76)	4.495 (114.17)	4.758 (120.85)
46	92		71973-1046	71973-1146	71973-1246	4.500 (114.30)	4.595 (116.71)	4.858 (123.39)
47	94		71973-1047	71973-1147	71973-1247	4.600 (116.84)	4.695 (119.25)	4.958 (125.93)
48	96		71973-1048	71973-1148	71973-1248	4.700 (119.38)	4.795 (121.79)	5.058 (128.47)
49	98		71973-1049	71973-1149	71973-1249	4.800 (121.92)	4.895 (124.33)	5.158 (131.01)
50	100		71973-1050	71973-1150	71973-1250	4.900 (124.46)	4.995 (126.87)	5.258 (133.55)
51	102		71973-1051	71973-1151	71973-1251	5.000 (127.00)	5.095 (129.41)	5.358 (136.09)
52	104		71973-1052	71973-1152	71973-1252	5.100 (129.54)	5.195 (131.95)	5.458 (138.63)
53	106		71973-1053	71973-1153	71973-1253	5.200 (132.08)	5.295 (134.49)	5.558 (141.17)
54	108		71973-1054	71973-1154	71973-1254	5.300 (134.62)	5.395 (137.03)	5.658 (143.71)
55	110		71973-1055	71973-1155	71973-1255	5.400 (137.16)	5.495 (139.57)	5.758 (146.25)
56	112		71973-1056	71973-1156	71973-1256	5.500 (139.70)	5.595 (142.11)	5.858 (148.79)
57	114		71973-1057	71973-1157	71973-1257	5.600 (142.24)	5.695 (144.65)	5.958 (151.33)
58	116		71973-1058	71973-1158	71973-1258	5.700 (144.78)	5.795 (147.19)	6.058 (153.87)
59	118		71973-1059	71973-1159	71973-1259	5.800 (147.32)	5.895 (149.73)	6.158 (156.41)
60	120		71973-1060	71973-1160	71973-1260	5.900 (149.86)	5.995 (152.27)	6.258 (158.95)
61	122		71973-1061	71973-1161	71973-1261	6.000 (152.40)	6.095 (154.81)	6.358 (161.49)
62	124		71973-1062	71973-1162	71973-1262	6.100 (154.94)	6.195 (157.35)	6.458 (164.03)
63	126		71973-1063	71973-1163	71973-1263	6.200 (157.48)	6.295 (159.89)	6.558 (166.57)
64	128		71973-1064	71973-1164	71973-1264	6.300 (160.02)	6.395 (162.43)	6.658 (169.11)
65	130		71973-1065	71973-1165	71973-1265	6.400 (162.56)	6.495 (164.97)	6.758 (171.65)

REVISIONS

1	H	SEE SHEET I
2	F2	SEE SHEET I
3	F1	SEE SHEET I
4	F	SEE SHEET I

DIMENSIONS SHOWN (METRIC) INCH
UNLESS OTHERWISE SPECIFIED
TOLERANCES: ANGULAR ± 1/2°

INCH	METRIC
5 PLACE ± --- ± ---	---
2 PLACE ± --- ± ---	---
1 PLACE --- ± ---	---

DRAFT WHERE APPLICABLE MUST REMAIN WITHIN DIMENSIONS

DRWG. BY: DJB
CHK'D. BY: []
APP'D. BY: []
SCALE: ---:---

REVISIONS

THIS DRAWING CONTAINS INFORMATION THAT IS PROPRIETARY TO MOLEX INC. AND SHOULD NOT BE USED WITHOUT WRITTEN PERMISSION.

RECEPTACLE-RIGHT ANGLE
.120 PC TAIL, NO PINSTOP
.100/(2.54) GRID

MOLEX INCORPORATED
1151E, ILL. 60532 U.S.A.
SHEET NO. 7 DATE 10/21/91

SEE CHART SDA-71973-****

FILE NAME: ST197357
DIV: TC