

FEATURES AND SPECIFICATIONS

Features and Benefits

- Sizes 7 to 20 circuits
- Staggered solder tails: 2.50 x 2.50mm
- Board retention pegs
- Polarized to header and to PCB
- Locking ramp

Reference Information

Product Specification: 99020-0018
 Packaging: Tray
 Mates With: 90784
 Designed In: Millimeters

Electrical

Voltage: 250V DC max.
 Current: 3.0A
 Contact Resistance: 8mΩ max.
 Insulation Resistance: 500 MΩ min.

Mechanical

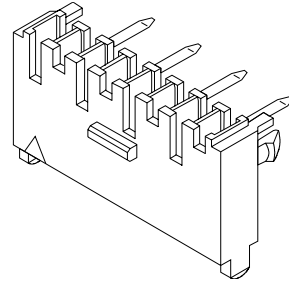
Contact Retention to Housing: 15N per contact min.
 Mating Force: 5N max.
 Unmating Force: 3N min.
 Durability: 15 cycles

Physical

Housing: Polyester, UL 94V-0
 Contact: Phosphor Bronze
 Plating: 2.5 to 4.5μm Tin/Lead
 Operating Temperature: -25 to +85°C

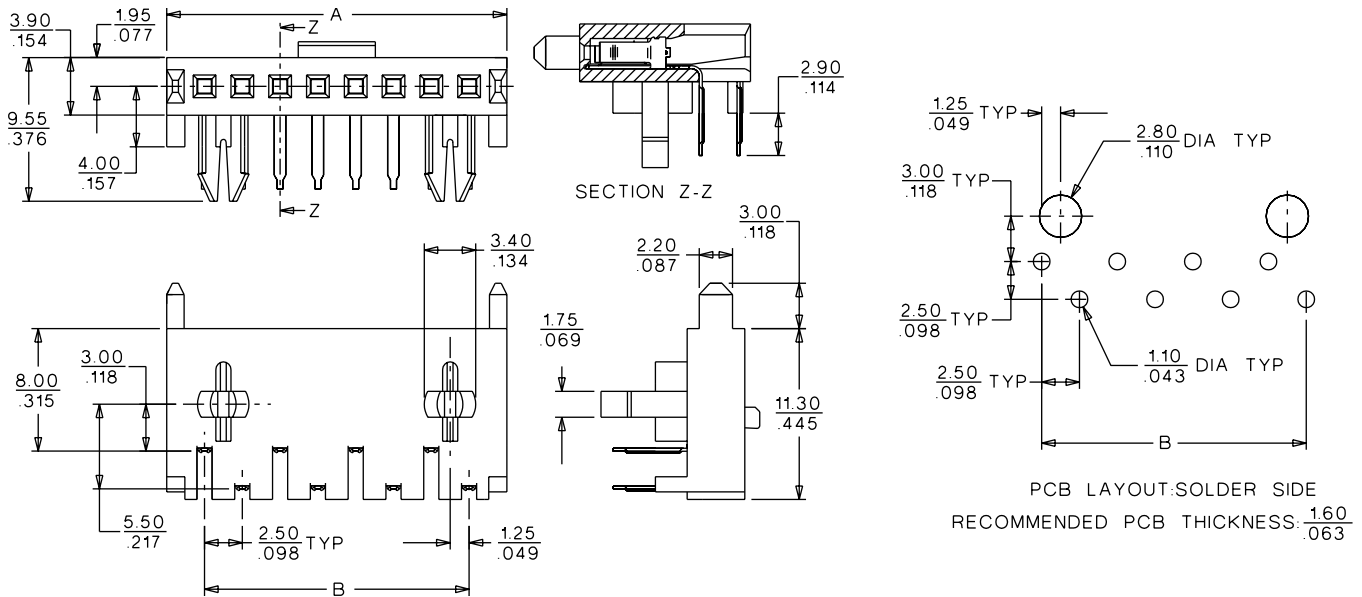
molex® 2.50mm (.098") Pitch User Friendly Board-To-Board Receptacle

90783 Right Angle, Latched



B 2.00 to 2.50mm (.079 to .098") Pitch

CATALOG DRAWING (FOR REFERENCE ONLY)



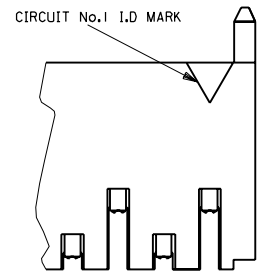
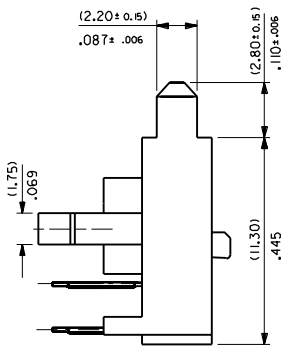
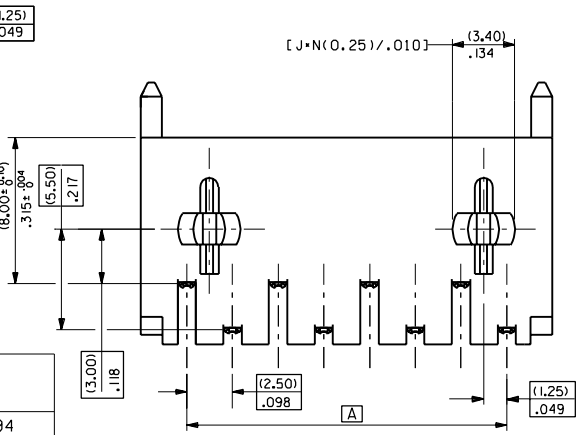
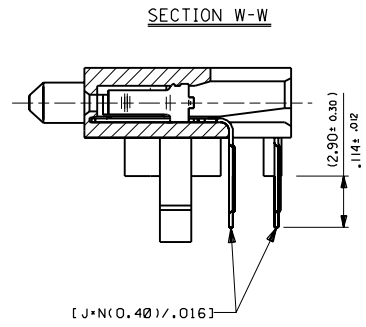
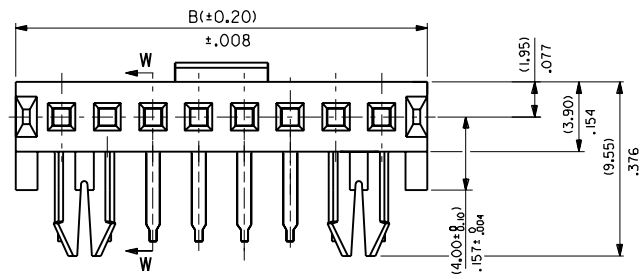
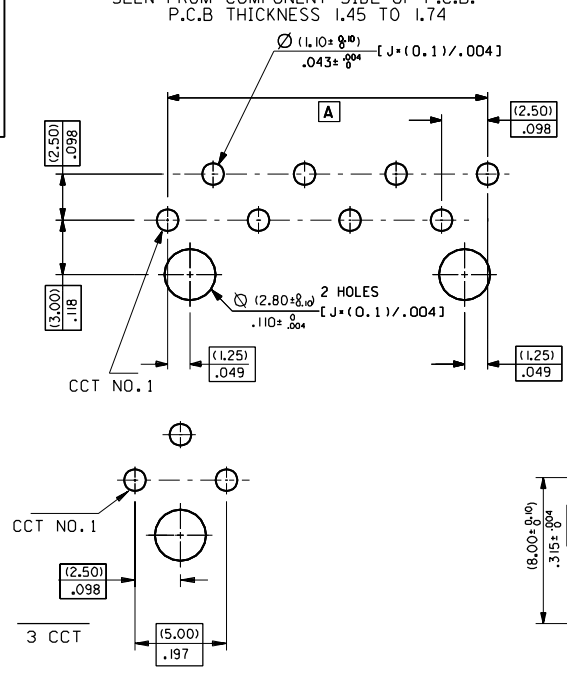
ORDERING INFORMATION AND DIMENSIONS

Circuits	Order No.	Dimension	
		A	B
7	90783-0007	20.00 (.787)	15.00 (.591)
8	90783-0008	22.50 (.886)	17.50 (.689)
9	90783-0009	25.00 (.984)	20.00 (.787)
10	90783-0010	27.50 (1.083)	22.50 (.886)
11	90783-0011	30.00 (1.181)	25.00 (.984)
12	90783-0012	32.50 (1.280)	27.50 (1.083)
13	90783-0013	35.00 (1.378)	30.00 (1.181)
14	90783-0014	37.50 (1.476)	32.50 (1.280)
15	90783-0015	40.00 (1.575)	35.00 (1.378)
16	90783-0016	42.50 (1.673)	37.50 (1.476)
17	90783-0017	45.00 (1.772)	40.00 (1.575)
18	90783-0018	47.50 (1.870)	42.50 (1.673)
19	90783-0019	50.00 (1.969)	45.00 (1.772)
20	90783-0020	52.50 (2.067)	47.50 (1.870)

PART NO. SDA-90783
 DWG. NO. SDA-90783

RECOMMENDED P.C.B. HOLE LAYOUT

SEEN FROM COMPONENT SIDE OF P.C.B.
 P.C.B THICKNESS 1.45 TO 1.74



CCT SIZE	ENG. NUMBER	DIM	DIM
3	90783-0003	(5.00) / .197	(10.00) / .394
7	90783-0007	(15.00) / .591	(20.00) / .787
8	90783-0008	(17.50) / .689	(22.50) / .886
9	90783-0009	(20.00) / .787	(25.00) / .984
10	90783-0010	(22.50) / .886	(27.50) / 1.083
11	90783-0011	(25.00) / .984	(30.00) / 1.181
12	90783-0012	(27.50) / 1.083	(32.50) / 1.280
13	90783-0013	(30.00) / 1.181	(35.00) / 1.378
14	90783-0014	(32.50) / 1.280	(37.50) / 1.476
15	90783-0015	(35.00) / 1.378	(40.00) / 1.575
16	90783-0016	(37.50) / 1.476	(42.50) / 1.673
17	90783-0017	(40.00) / 1.575	(45.00) / 1.772
18	90783-0018	(42.50) / 1.673	(47.50) / 1.870
19	90783-0019	(45.00) / 1.772	(50.00) / 1.969
20	90783-0020	(47.50) / 1.870	(52.50) / 2.067

NOTES: 1. MATERIAL: HOUSING: POLYESTER, UL-94V-0, G.E VALOX 310-SE0.
 TERMINAL: PHOSPHOR BRONZE, PLATING: HOT TIN LEAD DIP, 60/40 TO 95/5, (2.5-4.5UM) / .100-.180UIN.
 2. FOR UNSTATED DIMENSIONS AND PART NO.S SEE TABLE

VARIOUS MOODS EC NO. E2001-0518 DRWNS.FARKAS 03/11/2000 CH/K: APPR:	QUALITY SYMBOLS MAJOR = CRITICAL = C =	GENERAL TOLERANCES: (UNLESS SPECIFIED) mm INCH 4 PLACES ±0. ±. 3 PLACES ±0. ±.008 2 PLACES ±0.20 ±.008 1 PLACE ±0.20 ±. ANGULAR: ± 2°	SCALE 4:1 DESIGN UNITS <input checked="" type="checkbox"/> mm <input type="checkbox"/> INCH DRAWN BY & DATE SFARKAS 03/11/2000 CHECKED BY & DATE EFDLAN 03/11/2000 APPROVED BY & DATE MWILHITE 06/11/2000 CAD FILENAME	DIMENSIONS: <input checked="" type="checkbox"/> mm <input type="checkbox"/> INCH <input type="checkbox"/> mm ONLY SHT REV REVISE ON CAD ONLY
		TITLE: 2.5mm UF B-To-B Rcpt RA Ltc Tnl		MOLEX MOLEX INCORPORATED
		DRAFT WHERE APPLICABLE MUST REMAIN WITHIN DIMENSIONS		THIS DRAWING CONTAINS INFORMATION THAT IS PROPRIETARY TO MOLEX INCORPORATED AND SHOULD NOT BE USED WITHOUT WRITTEN PERMISSION.
		B REV	MATERIAL NO. SEE CHART DRAWING NO. SDA-90783 SHEET NO. 10F 1	SIZE B