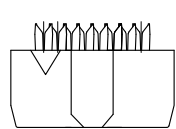
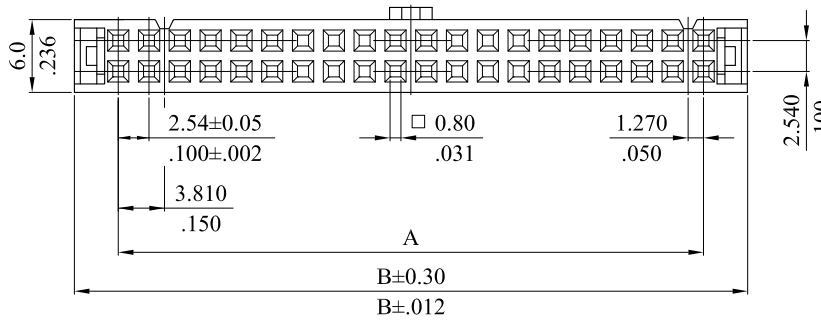
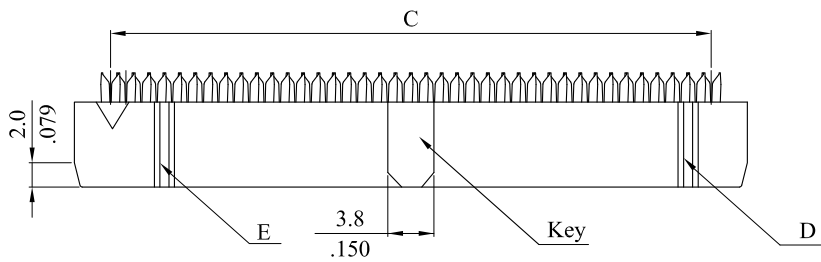
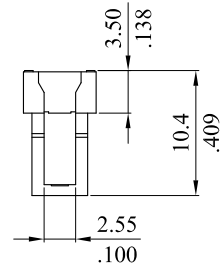
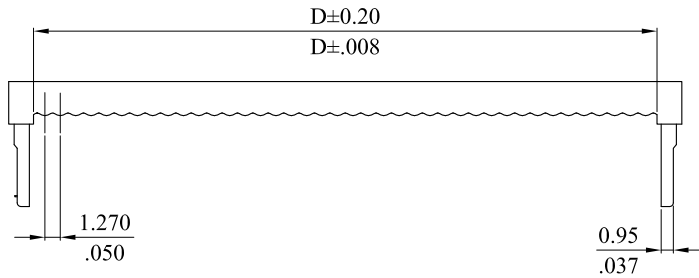
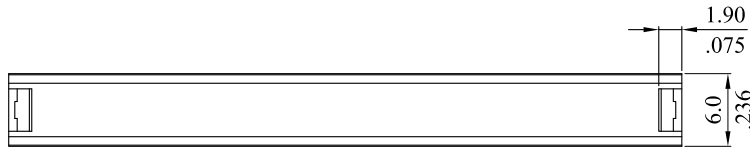
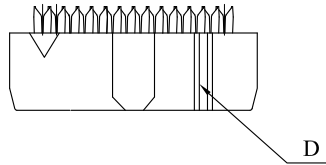


Material :
 Insulator: PBT + G/F UL94V-0
 Contact: Brass

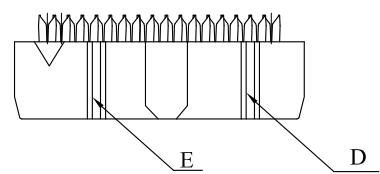
RoHS COMPLIANT



P < 10 without groove



10 ≤ P < 14 (with "D" groove)



14 ≤ P (with "D" and "E" groove)

K	ES101138			LEOCO CORPORATION	APPROVED:	PART NO.:					
J	ES090318				DATE:	2540S****0*					
I	ES070656			GENERAL TOLERANCES: (UNLESS SPECIFIED)	CHECKED:	TITLE:					
H	ES050752				DATE:	I.D.C. Socket					
G	E010077			DRAWN:	DATE:	DRAWING NO.:					
REV.	ECO. NO.	CHG.	APP.		DATE:	254007S					
				mm	inch	UNITS	SCALE	SIZE	SHEET	REV.	
				1 PLACE	± 0.30	± --	mm inch	2:1	A4	1/2	K
				2 PLACES	± 0.20	± .012					
				3 PLACES	± 0.10	± .008					
				4 PLACES	± --	± .004					
				ANGULAR ± (1°)							

RoHS COMPLIANT

Ordering Information :

$$2540S \begin{matrix} ** & ** & ** & 0* \\ 1 & 2 & 3 & 4 \end{matrix}$$

1. No. of circuits

2. Plating :

T=Tin plated 120 μ "min. over 30 μ "min. nickel overallU=Gold flash over 30 μ "min. nickel overallW=15 μ "min. gold flash over 30 μ "min. nickel overallZ=30 μ "min. gold flash over 30 μ "min. nickel overallF=Selective gold plated over 30 μ "min. nickel overallJ=15 μ "min. Selective gold plated over 30 μ "min. nickel overallK=30 μ "min. Selective gold plated over 30 μ "min. nickel overall

3. Options:

0=With Key


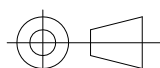
N=Without Key

4. Color:

01=Black

09=Gray

Circuits	Dim.A	Dim.B	Dim.C	Dim.D
06	5.080(.200)	12.16(.479)	6.350(.250)	7.66(.302)
08	7.620(.300)	14.74(.580)	8.890(.350)	10.24(.403)
10	10.160(.400)	17.27(.680)	11.430(.450)	12.77(.503)
12	12.700(.500)	19.85(.781)	13.970(.550)	15.35(.604)
14	15.240(.600)	22.40(.882)	16.510(.650)	17.90(.705)
16	17.780(.700)	24.94(.982)	19.050(.750)	20.44(.805)
18	20.320(.800)	27.46(1.081)	21.590(.850)	22.95(.904)
20	22.860(.900)	30.00(1.181)	24.130(.950)	25.50(1.004)
24	27.940(1.100)	35.10(1.382)	29.210(1.150)	30.60(1.205)
26	30.480(1.200)	37.59(1.480)	31.750(1.250)	33.09(1.303)
30	35.560(1.400)	42.66(1.680)	36.830(1.450)	38.16(1.502)
34	40.640(1.600)	47.80(1.882)	41.910(1.650)	43.30(1.705)
36	43.180(1.700)	50.29(1.980)	44.450(1.750)	45.79(1.803)
40	48.260(1.900)	55.50(2.185)	49.530(1.950)	51.30(2.020)
44	53.340(2.100)	60.56(2.384)	54.610(2.150)	56.36(2.219)
50	60.960(2.400)	68.10(2.681)	62.230(2.450)	63.90(2.516)
56	68.580(2.700)	75.74(2.982)	69.850(2.750)	71.54(2.817)
60	73.660(2.900)	80.80(3.181)	74.930(2.950)	76.60(3.016)
62	76.200(3.000)	83.35(3.281)	77.470(3.050)	79.15(3.116)
64	78.740(3.100)	85.90(3.382)	80.010(3.150)	81.70(3.217)

K	ES101138			 LECO CORPORATION GENERAL TOLERANCES: (UNLESS SPECIFIED)	APPROVED:		PART NO.:					
J	ES090318				DATE:		2540S****0*					
I	ES070656				CHECKED:		TITLE:					
H	ES050752				DATE:		I.D.C. Socket					
G	E010077				DRAWN:		DRAWING NO.:					
REV.	ECO. NO.	CHG.	APP.	4 PLACES		DATE:		254007S				
				ANGULAR $\pm (1^\circ)$				UNITS	SCALE	SIZE	SHEET	REV.
						$\frac{\text{mm}}{\text{inch}}$		2:1	A4	2/2	K	