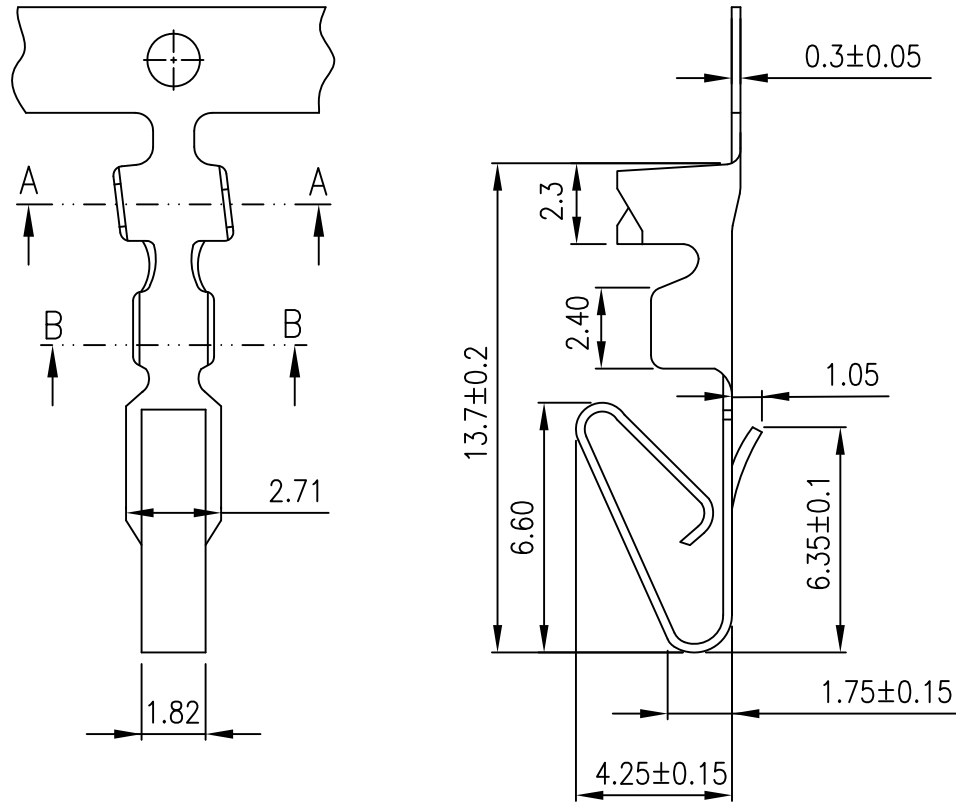




RoHS compliant

REV	DESCRIPTION	DATE



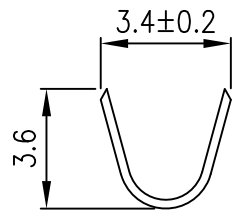
**NOTES**

Used in YY-2500-H, YY-2700-H  
 YY-2900-H, YY-3000-H series housing  
 Wire Range: AWG 18~22  
 Insulation O.D.= 2.8mm Max  
 Material : Brass  
 Finish : Tin-plated  
 Qty/reel : 6,000pcs  
 Thickness:0.30mm

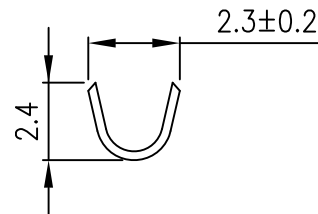
**ORDERING INFORMATION**

YY-2500 - T TA \* A  
 1 2 3 4

1. T : Terminal
2. Plated  
 TA : Tin , Pre-tinned
3. Material  
 □ : BRASS  
 P : Phosphor bronze
4. A=Thickness 0.3mm



A-A

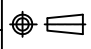


B-B

TOLERANCE	
X.	--
X.X	±0.30
X.XX	±0.10
X.XXX	±0.05
ANGULAR	--
APPROVALS	
DRAWN	Frank 14-JULY-2008
CHECKED	Denise 14-JULY-2008
APPROVED	Jessica 14-JULY-2008



**Young Yak Enterprise Co., Ltd.**

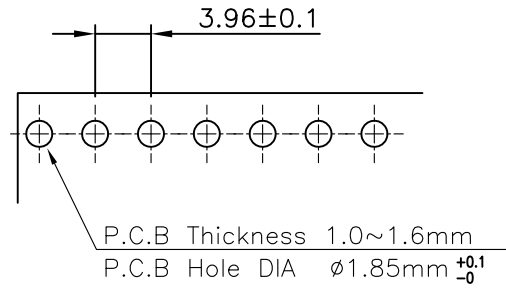
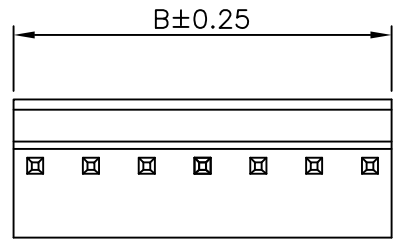
TITLE			
3.96mm(.156") Pitch Wire to Board Terminal			
VIEW	SCALE	PART NO.	REV.
	F	YY-2500-TTA*A	A0
UNIT	SIZE	DWG NO.	SHEET
MM	A4	YY-2500-TTA*A-074	1 OF 1





RoHS compliant

REV	DESCRIPTION	DATE



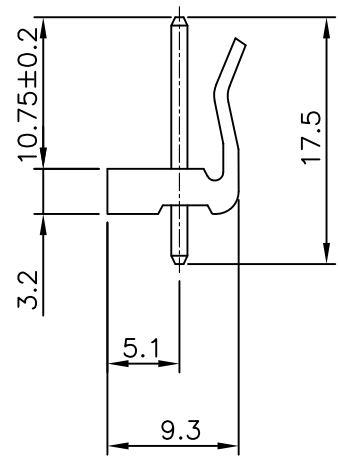
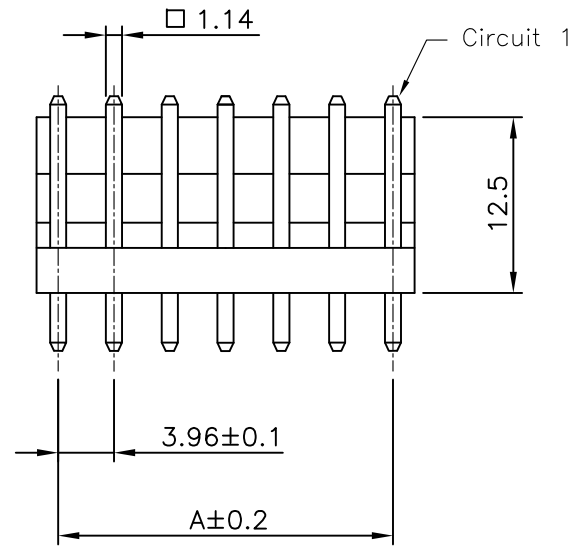
**NOTES**

- Body: Nylon 66 UL94-V0 or UL94-V2
- Contact Material: Brass
- Contact Plated: Tin-Plated or Gold-Plated

**ORDERING INFORMATION**


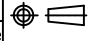
**YY - 2500 - W \*\* S \* - \***  
1 2 3 4

1. No. of Circuits 02 ~ 20 Pin
2. Contact Type  
S: Straight
3. Contact Plated  
T: Tin  
G: Gold
4. Material:  Nylon66 UL94-V2  
Q : Nylon66 UL94-V0



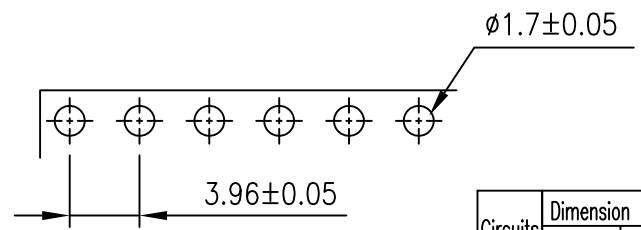
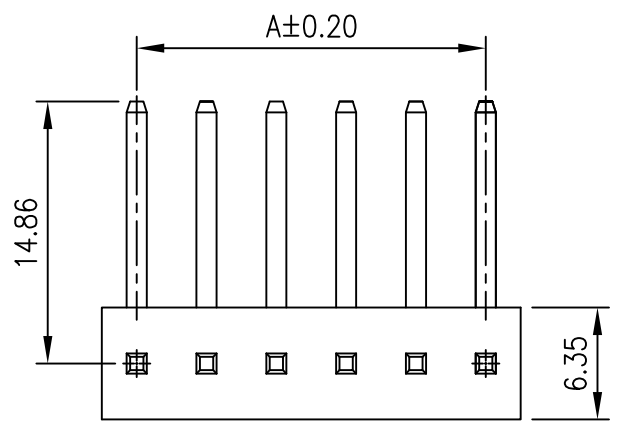
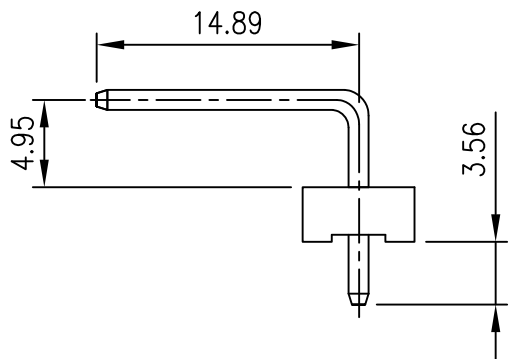
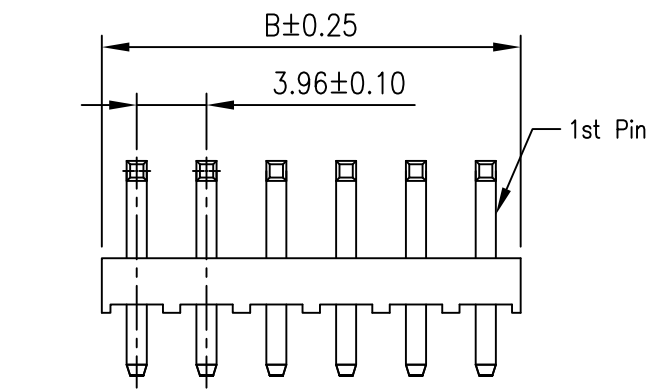
Circuits	Dimension mm		Circuits	Dimension mm		Circuits	Dimension mm	
	A	B		A	B		A	B
2	3.96	7.92	9	31.68	35.64	16	59.40	63.36
3	7.92	11.88	10	35.64	39.60	17	63.36	67.32
4	11.88	15.84	11	39.60	43.56	18	67.32	71.28
5	15.84	19.80	12	43.56	47.52	19	71.28	75.24
6	19.80	23.76	13	47.52	51.48	20	75.24	79.20
7	23.76	27.72	14	51.48	55.44	--	--	--
8	27.72	31.68	15	55.44	59.40	--	--	--

Young Yak  
 2008.11.15  
 ISSUED

TOLERANCE		 <b>Young Yak Enterprise Co., Ltd.</b>			
X.	--				
X.X	±0.25				
X.XX	±0.15				
X.XXX	±0.05				
ANGULAR	--				
APPROVALS		TITLE			
DRAWN	Frank	3.96mm(.156) Pitch		REV.	
03-NOVEMBER-2008		Wire to Board Header		A0	
CHECKED	Denise	VIEW	SCALE	PART NO.	REV.
03-NOVEMBER-2008			2:1	YY-2500-W**S*-*	A0
APPROVED	Jessica	UNIT	SIZE	DWG NO.	SHEET
03-NOVEMBER-2008		MM	A4	YY-2500-W**S*-*-014	1 OF 1

RoHS compliant

REV	DESCRIPTION	DATE



P.C.B. LAYOUT

**NOTES**


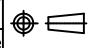
Available in 02 through 20 Circuits  
 Material: Nylon 66 UL94-V2  
 Mates with YY-2500-H series Housing  
 1.14mm (.045") square pin  
 Pin Material: Brass/Tin-Plated or Gold-Plated

**ORDERING INFORMATION**

YY-2500 - W \*\* R \* F  
                                   1 2 3 4

1. No. of Circuits 02~20
2. R : Right
3. Plated  
     T : Tin  
     G : Gold
4. F : Flat

Circuits	Dimension mm		Circuits	Dimension mm		Circuits	Dimension mm	
	A	B		A	B		A	B
2	3.96	7.92	9	31.68	35.64	16	59.40	63.36
3	7.92	11.88	10	35.64	39.60	17	63.36	67.32
4	11.88	15.84	11	39.60	43.56	18	67.32	71.28
5	15.84	19.80	12	43.56	47.52	19	71.28	75.24
6	19.80	23.76	13	47.52	51.48	20	75.24	79.20
7	23.76	27.72	14	51.48	55.44	--	--	--
8	27.72	31.68	15	55.44	59.40	--	--	--

TOLERANCE		 <b>Young Yak Enterprise Co., Ltd.</b>			
X.	--	TITLE 3.96mm(.156) Pitch Wire to Board Header			
X.X	±0.25				
X.XX	±0.20				
X.XXX	±0.05				
ANGULAR		--			
APPROVALS					
DRAWN	Frank	VIEW	SCALE	PART NO.	REV.
	12-NOVEMBER-2008		F	YY-2500-W**R*F	A0
CHECKED	Denise	UNIT	SIZE	DWG NO.	SHEET
	12-NOVEMBER-2008	MM	A4	YY-2500-W**R*F-014	1 OF 1
APPROVED	Jessica				
	12-NOVEMBER-2008				



