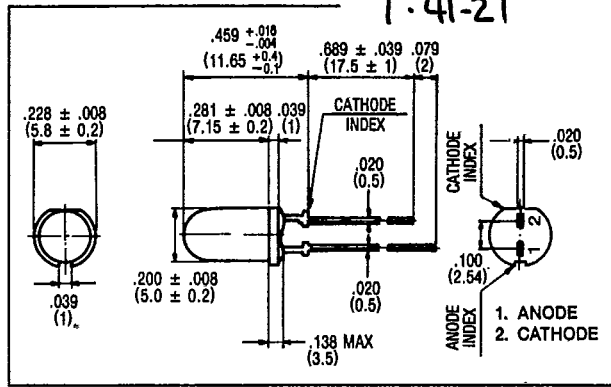
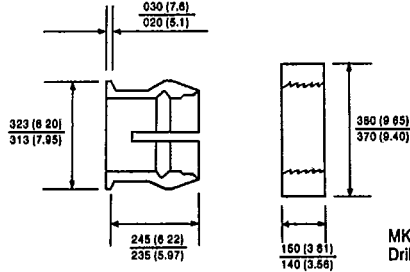


T-1 $\frac{3}{4}$ LED LAMPS WITH STANDOFFS

FEATURES

- Excellent on/off contrast ratio.
- Standoffs provide protection to LED die when used in solder bath.
- Capable of pulse operation.
- Special brightness and wavelength sorting is available.

OPTIONAL MOUNTING RING(R) AND CLIP(C)



MKC-200 R/C can be used with panels up to .125 inch (3.18 mm) thick. Drill .257 inch dia. (6.53 mm) hole ("F" drill).

MAXIMUM RATINGS (Ta = 25°C)

PART NO.	FORWARD CURRENT (IF) (mA)	REVERSE VOLTAGE (VR) (V)	POWER DISSIPATION (PD) (mW)	OPERATING TEMPERATURE (Topr) (°C)	STORAGE TEMPERATURE (Tstg) (°C)
MT130-HR	25	4	100	-20 ~ 75	-30 ~ 100
MT140-HR	25	4	100	-20 ~ 75	-30 ~ 100
MT130-G	25	4	100	-20 ~ 75	-30 ~ 100
MT140-G	25	4	100	-20 ~ 75	-30 ~ 100
MT130-Y	25	4	100	-20 ~ 75	-30 ~ 100
MT140-Y	25	4	100	-20 ~ 75	-30 ~ 100
MT130-O	25	4	100	-20 ~ 75	-30 ~ 100
MT140-O	25	4	100	-20 ~ 75	-30 ~ 100
MT130-UR	25	4	55	-20 ~ 75	-30 ~ 100
MT140-UR	25	4	55	-20 ~ 75	-30 ~ 100
MT200-UR	25	4	55	-20 ~ 75	-30 ~ 100

OPTO-ELECTRICAL CHARACTERISTICS (Ta = 25°C)

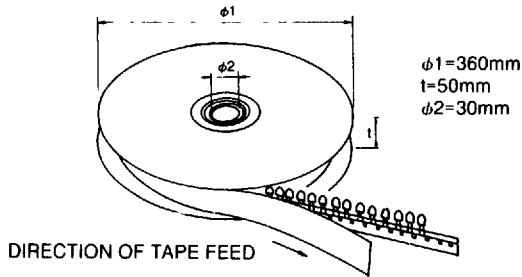
PART NO.	MATERIAL	LENS COLOR	VIEWING ANGLE	LUMINOUS INTENSITY (mcd)			FORWARD VOLTAGE (v)			REVERSE CURRENT		PEAK WAVELENGTH (nm)	SPEC. LINE HALF WIDTH (nm)
			typ.	min.	typ.	@mA	typ.	max.	@ mA	μ A	Vr		
MT130-HR	GaAsP/GaP	Red/Clear	50°	5.0	15	15	2.1	2.8	20	100	4	635	40
MT140-HR	GaAsP/GaP	Red/Diff	80°	3.0	7	15	2.1	2.8	20	100	4	635	40
MT130-G	GaP/GaP	Green/Clear	50°	3.0	17	15	2.1	2.8	20	5	4	565	25
MT140-G	GaP/GaP	Green/Diff	80°	.8	5	15	2.1	2.8	20	5	4	565	25
MT130-Y	GaAsP/GaP	Yellow/Clear	50°	1.0	9	15	2.1	2.8	20	100	4	585	32
MT140-Y	GaAsP/GaP	Yellow/Diff	80°	.8	5	15	2.1	2.8	20	100	4	585	32
MT130-O	GaAsP/GaP	Orange/Clear	50°	1.0	8	15	2.1	2.8	20	100	4	610	35
MT140-O	GaAsP/GaP	Orange/Diff	80°	.8	4	15	2.1	2.8	20	100	4	610	35
MT130-UR	GaAlAs	Red/Clear	50°	5.0	20	20	1.75	2.2	20	100	4	660	25
MT140-UR	GaAlAs	Red/Diff	80°	4.0	15	20	1.75	2.2	20	100	4	660	25
MT200-UR	GaAlAs	Red/Clear	50°	6.0	22	20	1.75	2.2	20	100	4	660	25

marktech 120 Broadway • Menands, New York 12204 • (518) 436-5865 • FAX: (518) 436-5877

APPLICATION NOTES

[4] Packaging Reel Packaging

a) Reel type



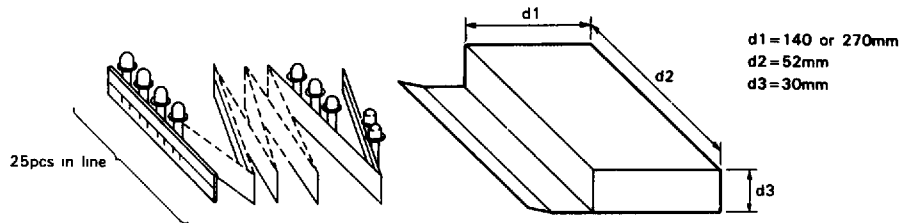
Content

LED Type	Quantity/Reel
$\phi 3$ Series	2000 pcs
$\phi 5$ Series	1000 pcs

T-1 and T- 1 3/4 packages

*Lamps with external shapes other than those above are also available. Please consult Marktech.

b) Zigzag wound tape



At tape beginning and end, there is additional space for 4 pcs or more

Content

LED Type	Quantity/Box
$\phi 3$ Series	2000 or 5000 pcs
$\phi 5$ Series	1000 or 2000 pcs



marktech

5 Hemlock Street • Latham, New York • (518) 786-6591 • FAX (518) 786-6599