

FULL SPECTRUM RAINBOW LEDs

T1³/₄ (5mm), T3 (8mm) LOW DOME

LEDTRONICS PART NO.	LENS COLOR	L.E.D. RADIATION COLOR	ABSOLUTE MAX. RATINGS Ta=25°C				ELECTRO-OPTICAL CHARACTERISTICS Ta=25°C						FIGURE
			Pd mW	Ifp mA	If mA	Vr V	If mA typ	Iv mcd typ	Vf typ/max	VIEW ANGLE	IrMAX μA	λ P nm	
5mm RAINBOW (RGB) LOW DOME LED CLEAR & DIFFUSED													
DIS-1024-002 NOTE 2	CLEAR	RED	100	100	30	5	20	30	2.0/2.8	34	100	625	1
		GREEN	100	100	30	5	20	50	2.1/2.8	34	100	567	
		BLUE	280	200	80	5	60	5.8	3.2/3.7	34	100	470	
DIS-1024-102 NOTE 2	DIFFUSED	RED	100	100	30	5	20	23	2.0/2.8	60	100	625	1
		GREEN	100	100	30	5	20	34	2.1/2.8	60	100	567	
		BLUE	280	200	80	5	60	3.4	3.2/3.7	60	100	470	
DIS-1024-003 NOTE 2	CLEAR	U. RED	100	200	40	4	20	120	1.7/2.4	34	100	660	1
		P. GRN	125	100	50	4	20	12	2.2/2.6	34	100	558	
		BLUE	280	200	80	5	60	5.8	3.2/3.7	34	100	470	
DIS-1024-103 NOTE 2	DIFFUSED	U. RED	100	200	40	4	20	75	1.7/2.4	60	100	660	1
		P. GRN	125	100	50	4	20	9	2.2/2.6	60	100	558	
		BLUE	280	200	80	5	60	3.4	3.2/3.7	60	100	470	
DIS-1024-004 NOTE 2	CLEAR	RED	100	100	30	5	20	30	2.0/2.8	34	100	625	1
		P. GRN	125	100	50	4	20	12	2.2/2.6	34	100	558	
		BLUE	280	200	80	5	60	5.8	3.2/3.7	34	100	470	
DIS-1024-104 NOTE 2	DIFFUSED	RED	100	100	30	5	20	23	2.0/2.8	60	100	625	1
		P. GRN	125	100	50	4	20	9	2.2/2.6	60	100	558	
		BLUE	280	200	80	5	60	3.4	3.2/3.7	60	100	470	
8mm RAINBOW (RGB) LOW DOME LED CLEAR & DIFFUSED													
DIS-1018-002 NOTE 2	CLEAR	RED	100	100	30	5	20	24	2.0/2.8	80	100	625	2
		GREEN	100	100	30	5	20	40	2.1/2.8	80	100	567	
		BLUE	280	200	80	5	60	4.1	3.2/3.7	80	100	470	
DIS-1018-102 NOTE 2	DIFFUSED	RED	100	100	30	5	20	17	2.0/2.8	80	100	625	2
		GREEN	100	100	30	5	20	27	2.1/2.8	80	100	567	
		BLUE	280	200	80	5	60	3.7	3.2/3.7	80	100	470	
DIS-1018-003 NOTE 2	CLEAR	U. RED	100	200	40	4	20	100	1.7/2.4	80	100	660	2
		P. GRN	125	100	50	4	20	8	2.1/2.5	80	100	558	
		BLUE	280	200	80	5	60	4.1	3.2/3.7	80	100	470	
DIS-1018-103 NOTE 2	DIFFUSED	U. RED	100	200	40	4	20	60	1.7/2.4	80	100	660	2
		P. GRN	125	100	50	4	20	6	2.1/2.5	80	100	558	
		BLUE	280	200	80	5	60	3.7	3.2/3.7	80	100	470	
DIS-1018-004 NOTE 2	CLEAR	RED	100	100	30	5	20	24	2.0/2.8	80	100	625	2
		P. GRN	125	100	50	4	20	8	2.1/2.5	80	100	558	
		BLUE	280	200	80	5	60	4.1	3.2/3.7	80	100	470	
DIS-1018-104 NOTE 2	DIFFUSED	RED	100	100	30	5	20	17	2.0/2.8	80	100	625	2
		P. GRN	125	100	50	4	20	6	2.1/2.5	80	100	558	
		BLUE	280	200	80	5	60	3.7	3.2/3.7	80	100	470	

Topr notes:
-20°C TO +60°C

Tstg notes:
-35°C TO +100°C

Jctn/Cath Temp. 145°C/Watt
Lead Soldering Temp. 260°C max., 5 sec.
1/16" (1.6mm) from body

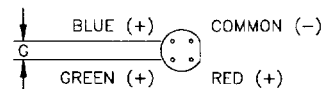
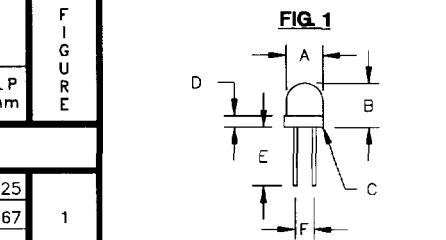
NOTES:

- Ifp .1 msec PULSE 0.1% DUTY CYCLE.
- TO PRODUCE A WHITE LIGHT, THE FOLLOWING RESISTOR VALUES AND CURRENTS ARE RECOMMENDED FOR 5V APPLICATIONS:
RED ANODE: 1200Ω/3mA, (LOWER FOR ULTRA RED)
GREEN ANODE: 560Ω/10mA, (HIGHER FOR PURE GREEN)
BLUE ANODE: 33Ω/60mA

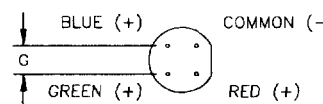
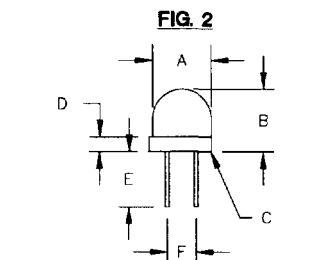
Tol: ±.005

FIG	"A" (O.D.) (mm)	"B" (mm)	"C" (mm)	"D" (mm)	"E" MIN. (mm)	"F" (mm)	"G" MIN. (mm)	"H" SQ. (mm)
1	.197 5mm	.236 6mm	.224 5.7mm	.060 1.5mm	.315 8mm	.100 2.5mm	.100 2.5mm	.020 0.5mm
2	.315 8mm	.335 8.5mm	.354 9mm	.080 2mm	.296 7.5mm	.154 3.9mm	.154 3.9mm	.020 0.5mm

REV



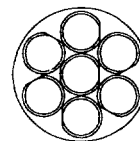
BOTTOM VIEW



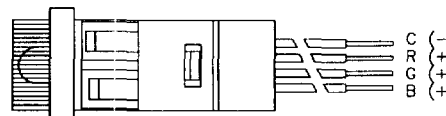
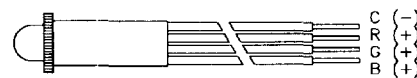
BOTTOM VIEW

PACKAGES AVAILABLE
(SOME PACKAGES)

RGB CLUSTERS

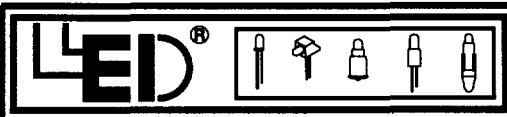


PANEL MOUNT LED'S



REV

INDICATES REVISED DATA

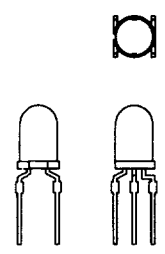


FULL SPECTRUM RAINBOW LEDs

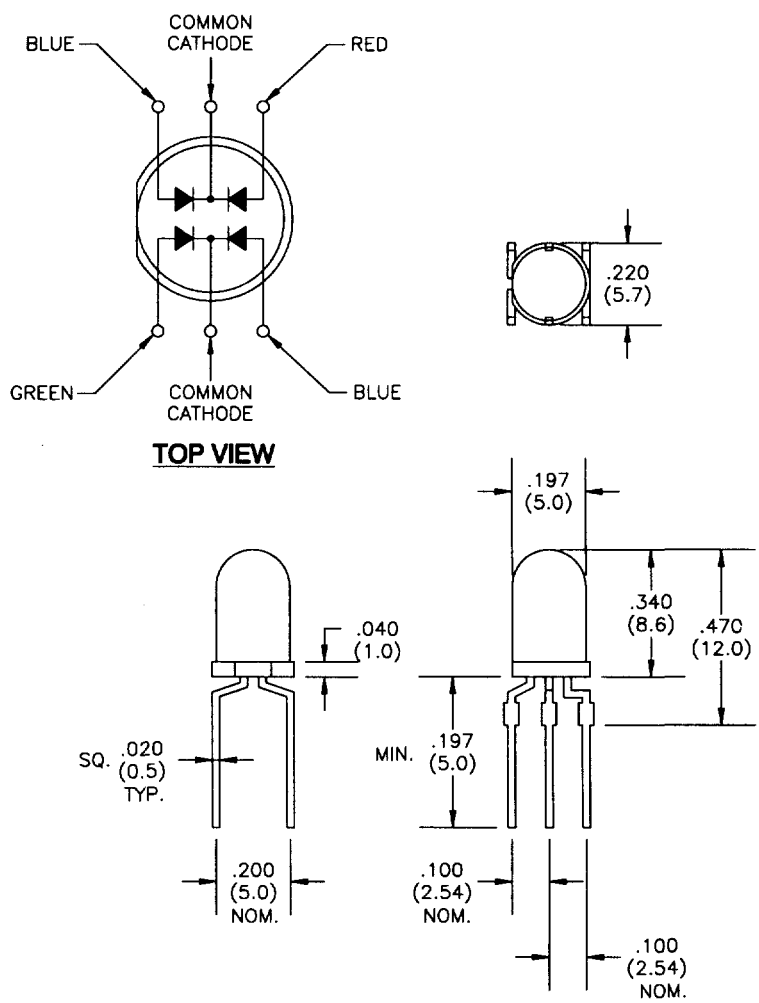
T1 3/4 (5mm), NEW 6 TERMINAL LED

LEDTRONICS PART NO.	LENS COLOR	L.E.D. RADIATION COLOR	ABSOLUTE MAX. RATINGS Ta=25°C				ELECTRO-OPTICAL CHARACTERISTICS Ta=25°C					
			Pd mW	Ifp mA	If mA	Vr V	If mA typ	Iv mcd typ	Vf typ/max	VIEW ANGLE	IrMAX μA	λ P nm
5mm RAINBOW (RGB) LOW DOME LED CLEAR & DIFFUSED												
DIS-1044-001	CLEAR	RED	75	100	30	5	10	15.0	2.0/2.5	12	100	625
		GREEN	125	100	30	5	10	15.0	2.0/2.5	12	100	555
		BLUE	280	200	80	5	20	8.0	3.2/3.7	12	100	470
DIS-1044-101	DIFFUSED	RED	75	100	30	5	10	6.0	2.0/2.5	55	100	625
		GREEN	125	100	30	5	10	6.0	2.0/2.5	55	100	555
		BLUE	280	200	80	5	20	3.0	3.2/3.7	55	100	470

Actual Size



Topr notes: -40°C TO +85°C
 Tstg notes: -40°C TO +100°C
 NOTE: BLUE INTENSITY IS FOR 2 CHIPS 20ma EACH
 Jctn/Cath Temp: 145°C/Watt
 Lead Soldering Temp: 260°C max., 5 sec.
 1/16" (1.6mm) from body
 1/10 duty cycle, 1K Hz



- NOTES:
1. ALL DIMENSIONS ARE IN INCHS (MILLIMETERS).
 2. TOLERANCE IS ±.010" (±0.25mm) UNLESS OTHERWISE SPECIFIED.