

HIGH EFFICIENCY RECTIFIERS

T-03-01

QUA-TRON ELECTRONICS

29E D

OPERATING AND STORAGE TEMPERATURE -65°C to + 175°C

TYPE	Maximum Peak Reverse Voltage	Maximum Average Rectified Current @ Half-Wave Resistive Load 60Hz		Maximum Forward Peak Surge Current @8.3ms Superimposed	Maximum Reverse Current @ PRV @ 25°C TA	Maximum Forward Voltage @ 25°C TA		Maximum Reverse Recovery Time
	PRV	I _o @ TL*		IFM (Surge)	IR	IFM	VFM	T _{rr}
	VPK	AAV	°C	APK	μA _{dc}	APK	VPK	nS

1.0 AMPERES-HIGH EFFICIENCY/DO-41

HER101	50	1.0	50	50	5.0	1.0	1.0	50
HER102	100	1.0	50	50	5.0	1.0	1.0	50
HER103	200	1.0	50	50	5.0	1.0	1.0	50
HER104	300	1.0	50	50	5.0	1.0	1.2	50
HER105	400	1.0	50	50	5.0	1.0	1.2	50
HER106	600	1.0	50	50	5.0	1.0	1.4	70
HER107	800	1.0	50	50	5.0	1.0	1.7	70

1.5 AMPERES-HIGH EFFICIENCY/DO-15

HER151	50	1.5	50	60	5.0	1.5	1.0	50
HER152	100	1.5	50	60	5.0	1.5	1.0	50
HER153	200	1.5	50	60	5.0	1.5	1.0	50
HER154	300	1.5	50	60	5.0	1.5	1.2	50
HER155	400	1.5	50	60	5.0	1.5	1.2	50
HER156	600	1.5	50	60	5.0	1.5	1.4	70
HER157	800	1.5	50	60	5.0	1.5	1.7	70

3.0 AMPERES-HIGH EFFICIENCY/DO-201AD

HER301	50	3.0	50	200	10	3.0	1.0	50
HER302	100	3.0	50	200	10	3.0	1.0	50
HER303	200	3.0	50	200	10	3.0	1.0	50
HER304	300	3.0	50	200	10	3.0	1.2	50
HER305	400	3.0	50	200	10	3.0	1.2	50
HER306	600	3.0	50	200	10	3.0	1.4	70
HER307	800	3.0	50	200	10	3.0	1.7	70

5.0 AMPERES-HIGH EFFICIENCY/DO-201AD

HER501	50	5.0	50	200	10	5.0	1.0	50
HER502	100	5.0	50	200	10	5.0	1.0	50
HER503	200	5.0	50	200	10	5.0	1.0	50
HER504	300	5.0	50	200	10	5.0	1.2	50
HER505	400	5.0	50	200	10	5.0	1.2	50
HER506	600	5.0	50	200	10	5.0	1.4	70
HER507	800	5.0	50	200	10	5.0	1.7	70

HIGH EFFICIENCY RECTIFIERS

OPERATING AND STORAGE TEMPERATURE -65°C to + 175°C

TYPE	Maximum Peak Reverse Voltage	Maximum Average Rectified Current @ Half-Wave Resistive Load 60Hz		Maximum Forward Peak Surge Current @ 8.3ms Superimposed	Maximum Reverse Current @ PRV @ 25°C TA	Maximum Forward Voltage @ 25°C TA		Maximum Reverse Recovery Time
	PRV	I _o @ TL*		IFM (Surge)	IR	IFM	VFM	T _{rr}
	VPK	AAV	°C	APK	μA _{dc}	APK	VPK	nS

8.0 AMPERES-HIGH EFFICIENCY/TO-220A ☆



HER801	50	8.0	75	300	10	8.0	1.0	60
HER802	100	8.0	75	300	10	8.0	1.0	60
HER803	200	8.0	75	300	10	8.0	1.0	60
HER804	300	8.0	75	300	10	8.0	1.3	60
HER805	400	8.0	75	300	10	8.0	1.3	60

16 AMPERES-HIGH EFFICIENCY/TO-220 ☆



HER1601	50	16	75	300	10	8.0	1.0	60
HER1602	100	16	75	300	10	8.0	1.0	60
HER1603	200	16	75	300	10	8.0	1.0	60
HER1604	300	16	75	300	10	8.0	1.3	60
HER1605	400	16	75	300	10	8.0	1.3	60

NOTE: Suffix "N" = Negative CT "D" = Doubler Connection

30 AMPERES-HIGH EFFICIENCY/TO-3P ☆



HER3001	50	30	75	400	10	15.0	1.0	60
HER3002	100	30	75	400	10	15.0	1.0	60
HER3003	200	30	75	400	10	15.0	1.0	60
HER3004	300	30	75	400	10	15.0	1.3	60
HER3005	400	30	75	400	10	15.0	1.3	60

NOTE: 1. Suffix "N" = Negative CT "D" = Doubler Connection
 2. "☆" Tentative Data

AXIAL LEAD TAPING SPECIFICATIONS FOR RECTIFIERS

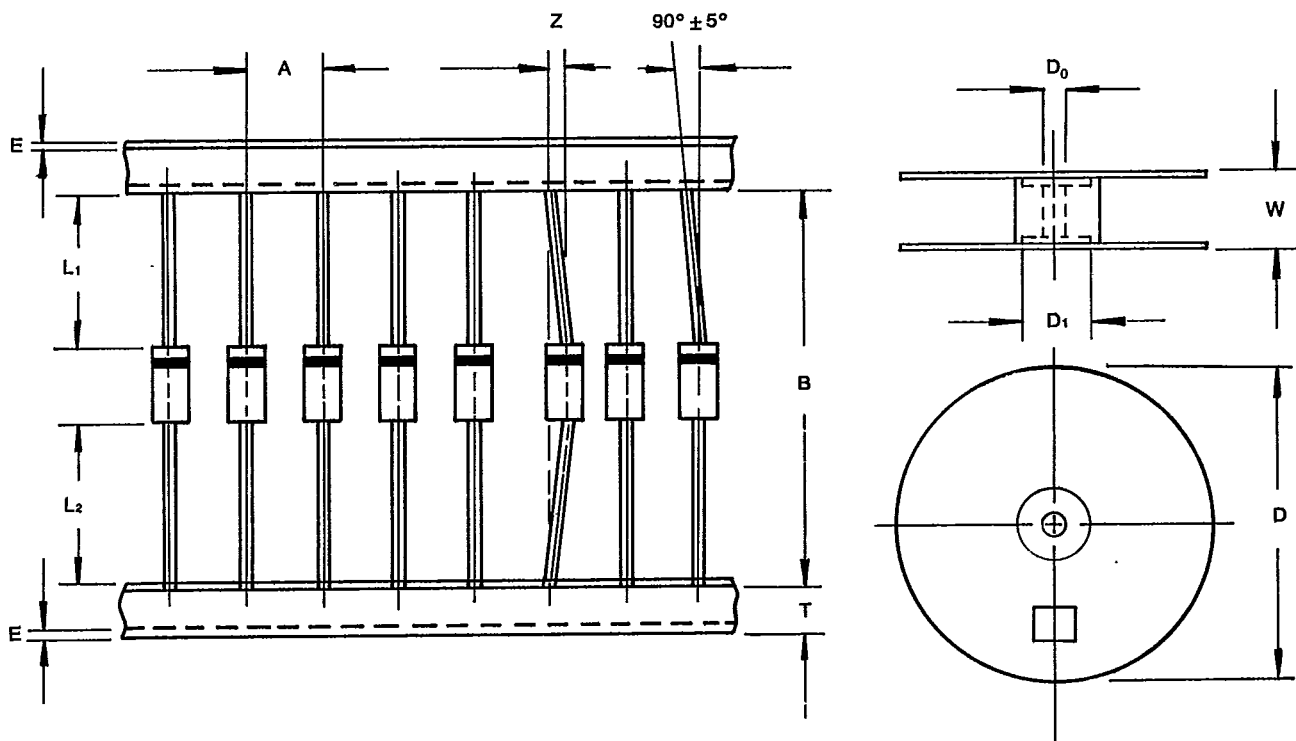
T-91-20

29E D ■ 7452808 0000032 T ■

QUA-TRON ELECTRONICS

Axial lead devices are packed in accordance with EIA standard RS-296-D and specifications given below.

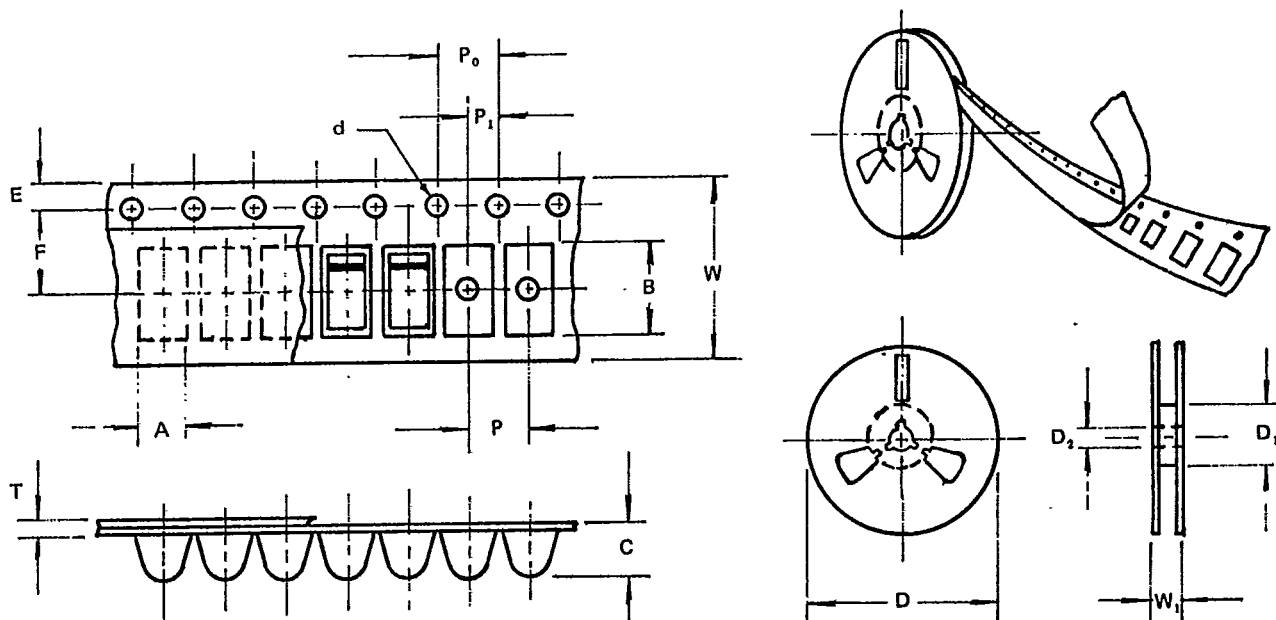
COMPONENT OUTLINE	COMPONENT PITCH A	INNER TAPE PITCH B	CUMULATIVE PITCH
	$\pm 0.5\text{mm} (.020")$	$\pm 1.5\text{mm} (.059")$	TOLERANCE
DO-41	5.0mm	26.0mm	2.0mm/20pitch
DO-41	5.0mm	52.4mm	2.0mm/10pitch
DO-15	5.0mm	52.4mm	2.0mm/10pitch
DO-201AD	10.0mm	52.4mm	2.0mm/10pitch
R-6	10.0mm	52.4mm	2.0mm/10pitch



ITEM	SYMBOL	SPECIFICATIONS (mm)	SPECIFICATIONS (Inch)
Component alignment	Z	1.2 max.	0.048 max.
Tape width	T	6.0 ± 0.4	0.236 ± 0.016
Exposed adhesive	E	0.8 max.	0.032 max.
Body eccentricity	$ L1-L2 $	1.0 max.	0.040 max.
Reel outside diameter	D	330.0	13.0
Reel inner diameter	D1	85.7 ± 0.3	3.375 ± 0.012
Feed hole diameter	D0	16.6 ± 0.4	0.655 ± 0.016
Reel width	W	79.0 ± 1.0	3.110 ± 0.040

NOTE: 1. Each component lead shall be sandwiched between tapes for a minimum of 3.2mm (0.126")
 2. The reel width 'W' for 26mm taping is $50.0 \pm 1.0\text{mm} (1.97" \pm 0.040")$

REEL TAPING SPECIFICATIONS FOR SURFACE MOUNT DEVICES

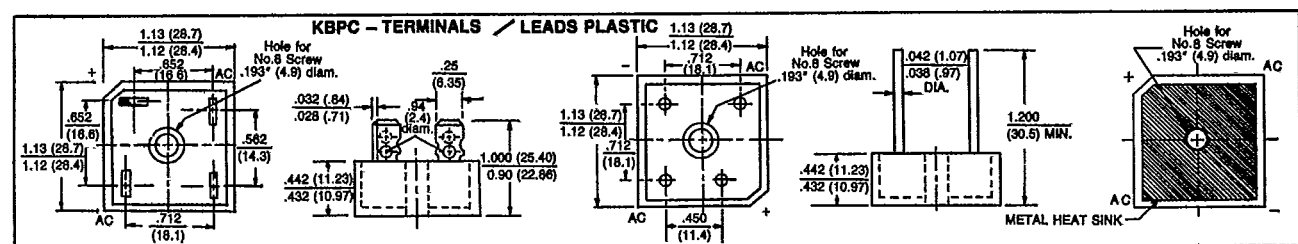
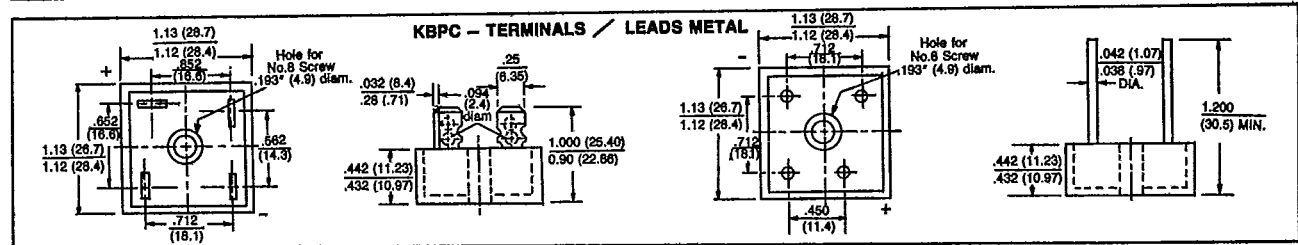
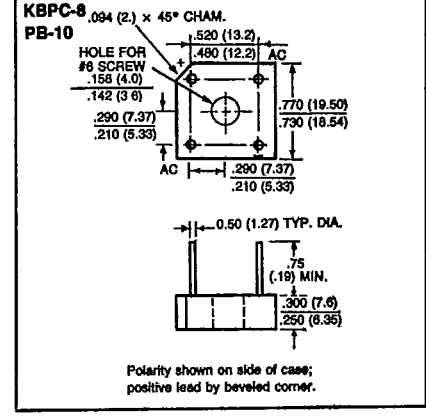
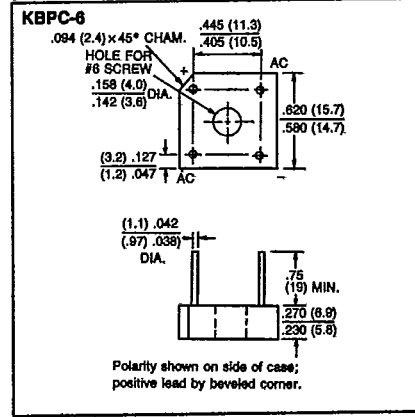
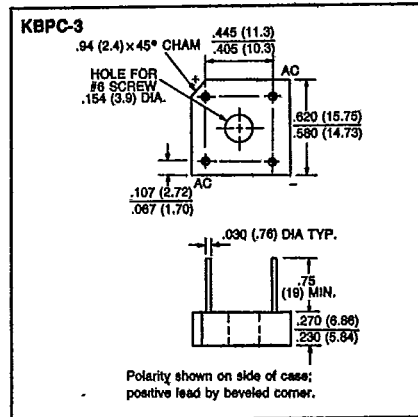
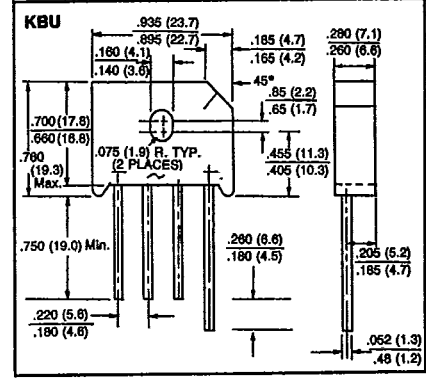
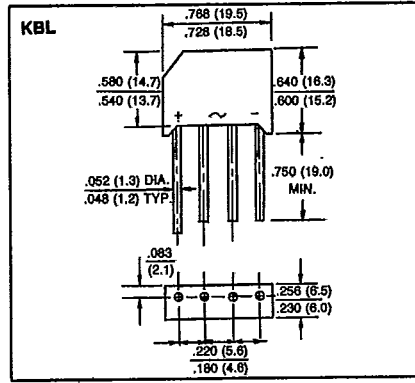
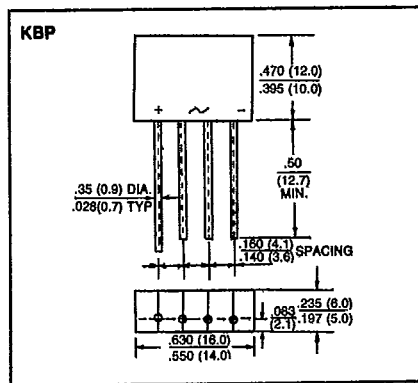
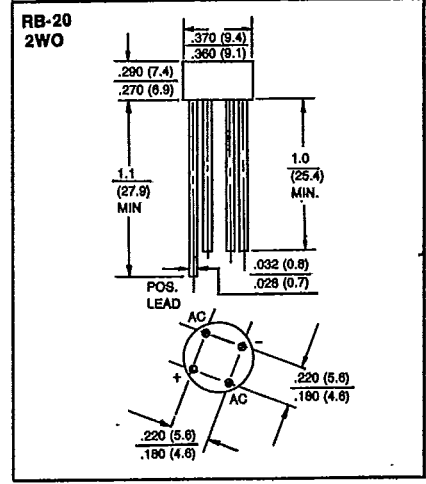
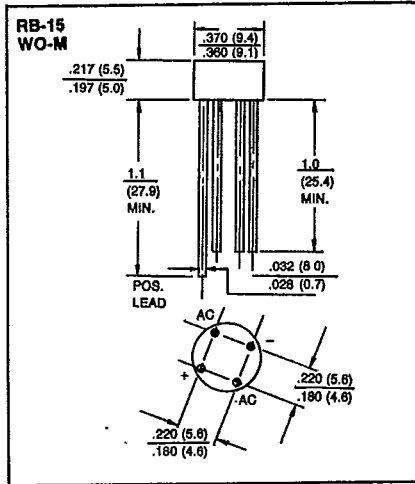
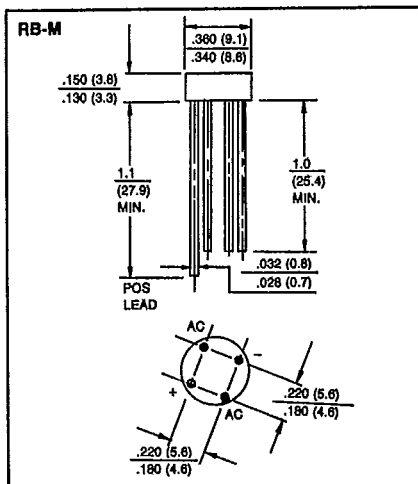


ITEM	SYMBOL	SPECIFICATIONS (mm)	SPECIFICATIONS (Inch)
Carrier width	A	3.2 max.	.126 max.
Carrier length	B	7.8 max.	.307 max.
Carrier depth	C	4.5 max.	.177 max.
Sprocket hole	d	1.5 ± 0.1	.059 ± .004
Reel outside diameter	D	178 ± 2.0	7.00 ± .079
Reel inner diameter	D1	50 min.	1.969 min.
Feed hole diameter	D2	13.0 ± 0.5	.512 ± .020
Sprocket hole position	E	1.75 ± 1.0	.069 ± .004
Punch hole position	F	5.5 ± 0.1	.217 ± .004
Punch hole pitch	P	4.0 ± 0.1	.157 ± .004
Sprocket hole pitch	P0	4.0 ± 0.1	.157 ± .004
Embossment center	P1	2.0 ± 0.05	.079 ± .002
Overall tape thickness	T	1.1 max.	.043 max.
Tape width	W	12.0 ± 0.3	.472 ± .012
Reel width	W1	18.4 max.	.724 max.

NOTE: 1. Devices are packed in accordance with EIA standard RS-481-A and specifications given above. Available only for SM-1 devices.
 2. Available on 7 inch (1500 ct.) diameter reels.

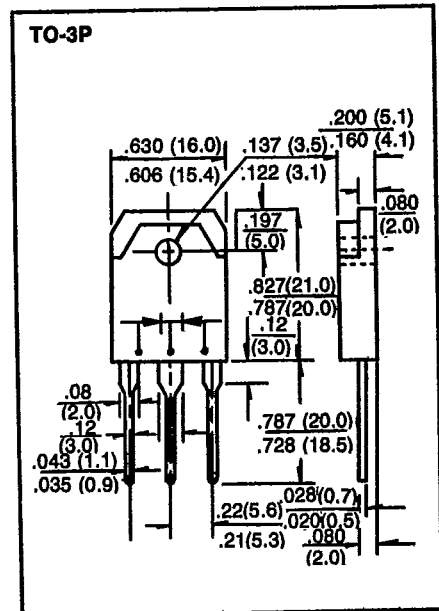
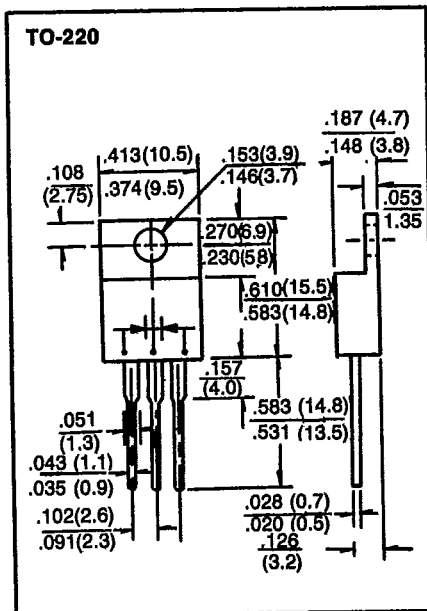
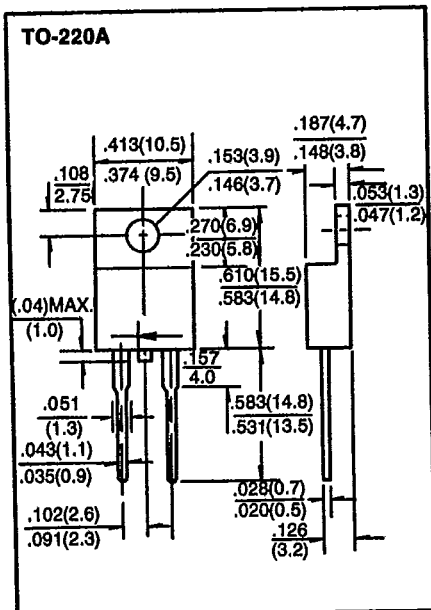
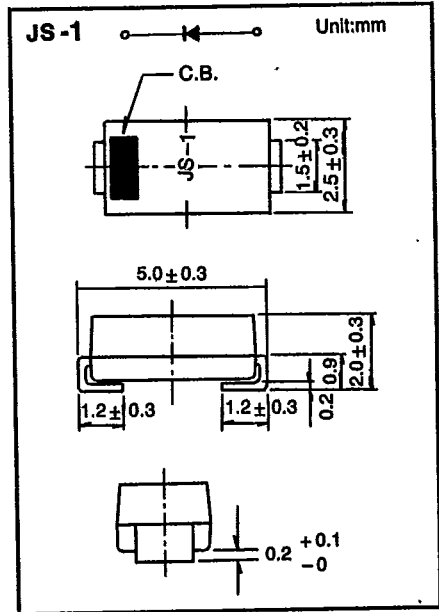
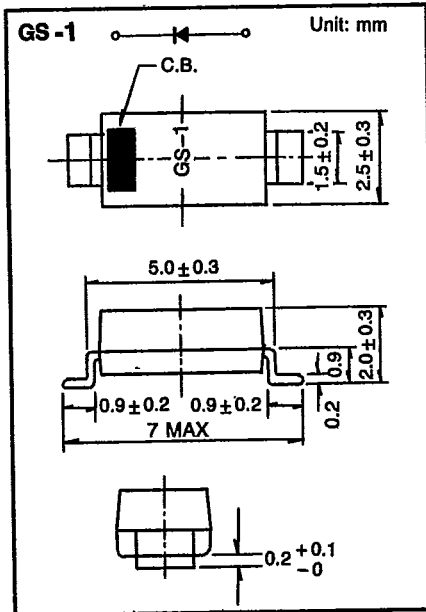
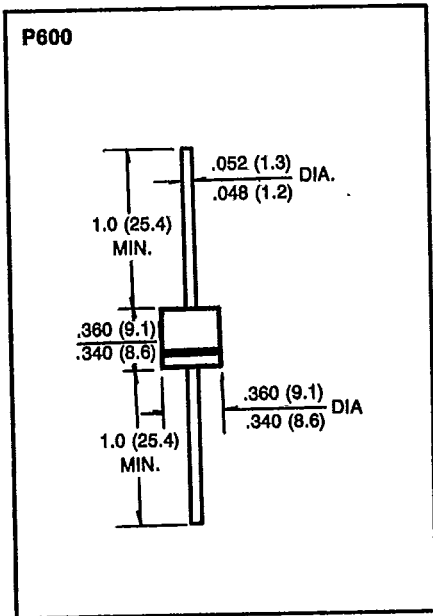
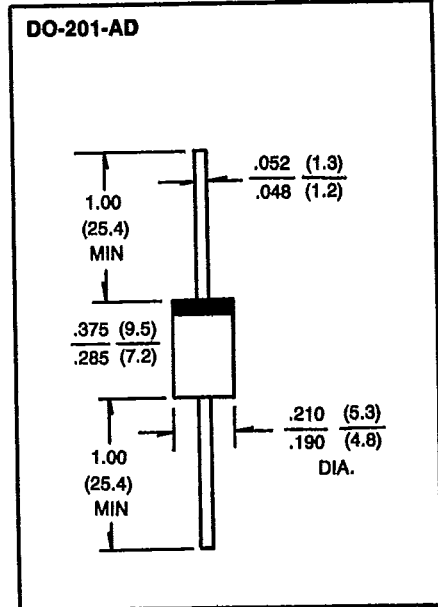
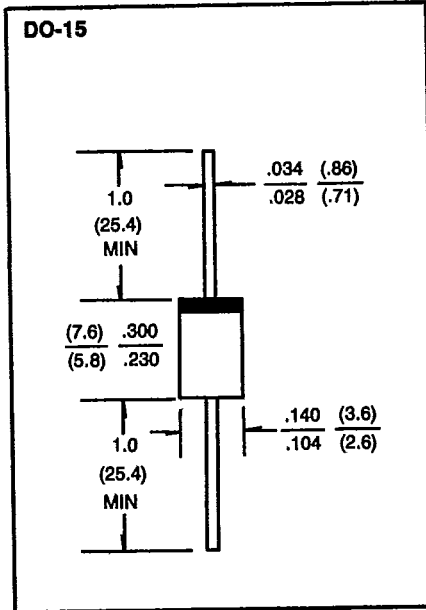
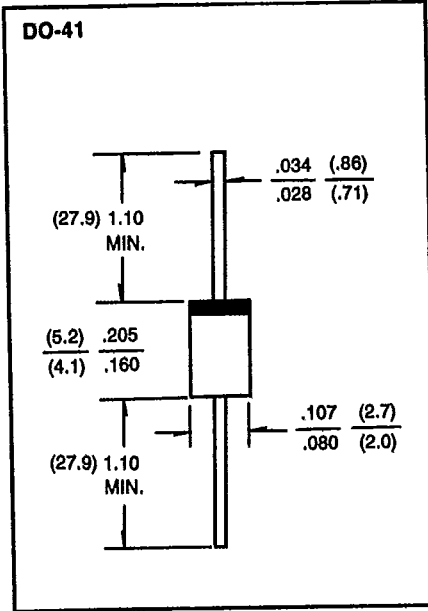
OUTLINE DRAWINGS

Unit: inch (mm)



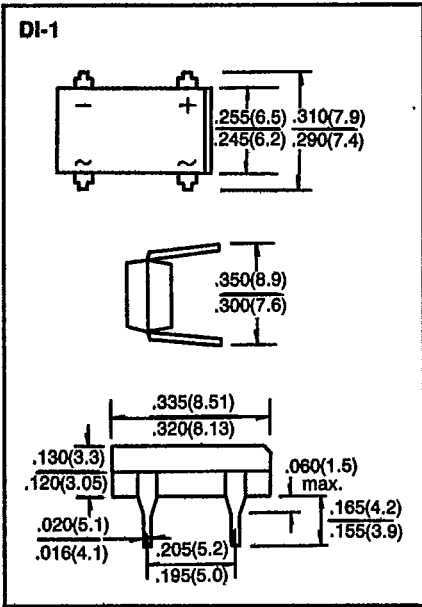
OUTLINE DRAWINGS

Unit: inch (mm)



OUTLINE DRAWINGS

Unit: inch (mm)



PACKAGING OF DIODE AND BRIDGE RECTIFIERS

BULK PACK

PACKAGE	INNER SIZE (m/m)	BOX (EA)	CARTON SIZE (m/m)	CARTON (EA)	APPROX. GROSS WEIGHT (Kg)
DO-41	200*84*21	1,000	465*225*270	50,000	19.1
DO-15	200*84*26	1,000	465*225*270	40,000	17.5
DO-201AD	200*84*42	500	465*225*270	12,500	17.3
DIP-1	490*145*85	2,500	510*365*310	20,000	14.4
RB-M/15/20	260*190*80	1,000	400*280*430	10,000	13.0/13.4/15.0
KBP	260*190*80	1,000	400*280*430	10,000	18.0
KBL40	260*190*80	500	400*280*430	5,000	25.5
KBPC-3/6	260*190*80	500	400*280*430	5,000	16.0/18.5
KBU	260*190*80	300	400*280*430	3,000	22.0
KBPC-8	260*190*80	300	400*280*430	3,000	19.0
KBPC-25/35 M	385*26*40	50	400*280*430	500	18.0
KBPC-25/35 P	385*26*40	50	400*280*430	500	12.0
TO-220*		400	390*275*365	8,000	18.1
TO-3P*		50	430*295*320	1,000	14.5

REEL PACK

PACKAGE	REEL (EA)	COMPONENT SPACE (m/m)	TAPE SPACE (m/m)	REEL DIA (m/m)	CARTON SIZE (m/m)	CARTON (EA)	APPROX. GROSS WEIGHT (Kg)
DO-41	5,000	5.0	51	330	355*355*425	25,000	12.4
DO-15	4,000	5.0	51	330	355*355*425	20,000	11.8
DO-201AD	1,250	9.5	51	330	355*355*425	6,250	11.6

AMMUNITION PACK

PACKAGE	REEL (EA)	COMPONENT SPACE (m/m)	TAPE SPACE (m/m)	REEL DIA (m/m)	CARTON SIZE (m/m)	CARTON (EA)	APPROX. GROSS WEIGHT (Kg)
DO-41	3,000	5.0	51	255*78*95	350*350*345	48,000	18.3
DO-15	1,500	5.0	51	255*78*95	350*350*345	22,500	12.5
DO-201AD	600	9.5	51	255*78*95	350*350*345	9,000	13.1
DO-41	3,000	5.0	26	255*51*95	330*310*268	42,000	15.1
DO-15	1,500	5.0	26	255*51*95	330*310*268	25,500	9.3