

**SPECIFICATIONS**

**Mechanical**

**Operating Force & Durability:** 130±30gf 1000000 Cycles  
 160±50gf 1000000 Cycles  
 240±80gf 300000 Cycles

**Travel:** 0.25+0.2/-0.1mm

**Electrical**

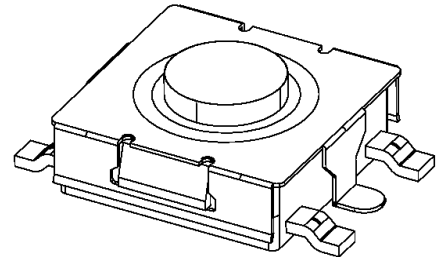
**Rating:** 50mA, 12V DC.  
**Contact Resistance:** 100m max.  
**Insulation Resistance:** 100M min. at 100V DC.  
**Dielectric Withstanding Voltage:** 250V AC for 1 Minute

**Physical**

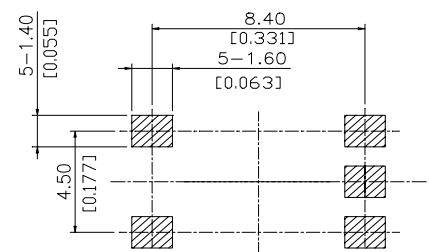
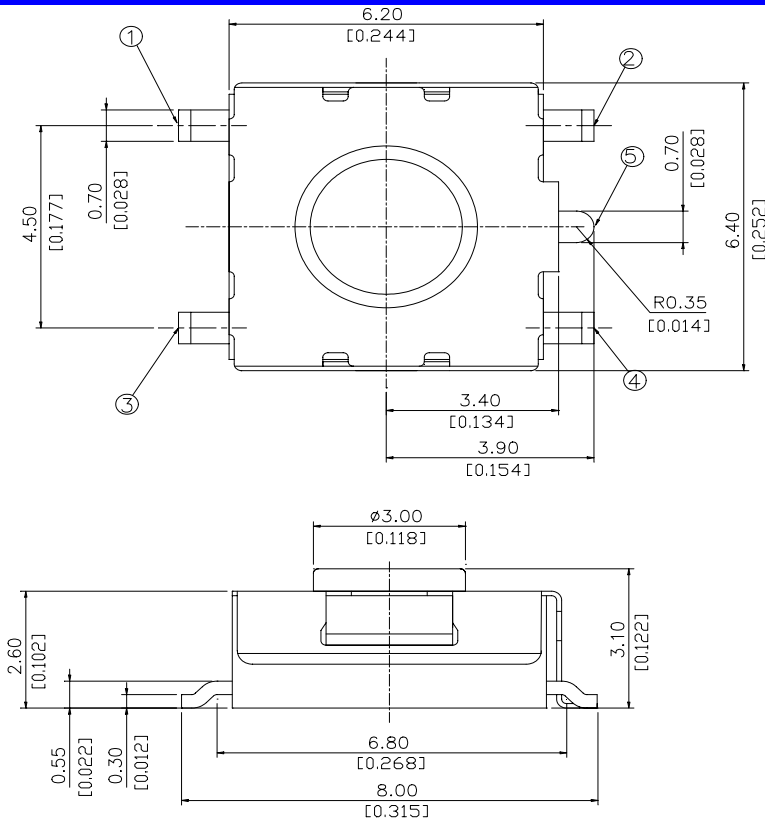
**Operating Temperatures:** -25 to +70  
**Package:** 1500pcs/Reel

**Tact Switch**

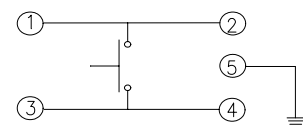
**1BT010 SERIES**  
**L SMT Type**



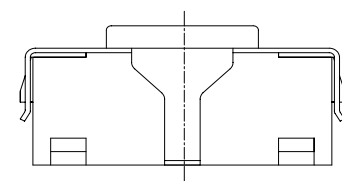
**DRAWING**



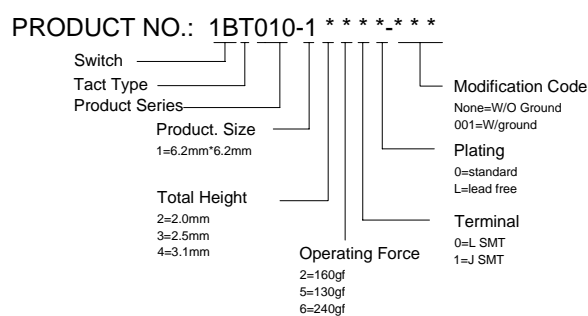
RECOMMENDED P.C.B LAYOUT



CIRCUIT SCHEMATIC



**ORDERING INFORMATION**



1BT010-14600-***	240±80gf
1BT010-14500-***	130±30gf
1BT010-14200-***	160±50gf
1BT010-1460L-***	240±80gf
1BT010-1450L-***	130±30gf
1BT010-1420L-***	160±50gf
P/N	OPERATING FORCE