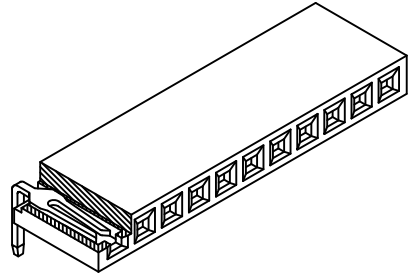
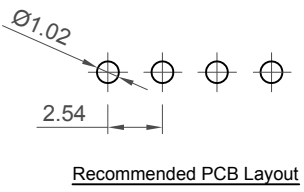
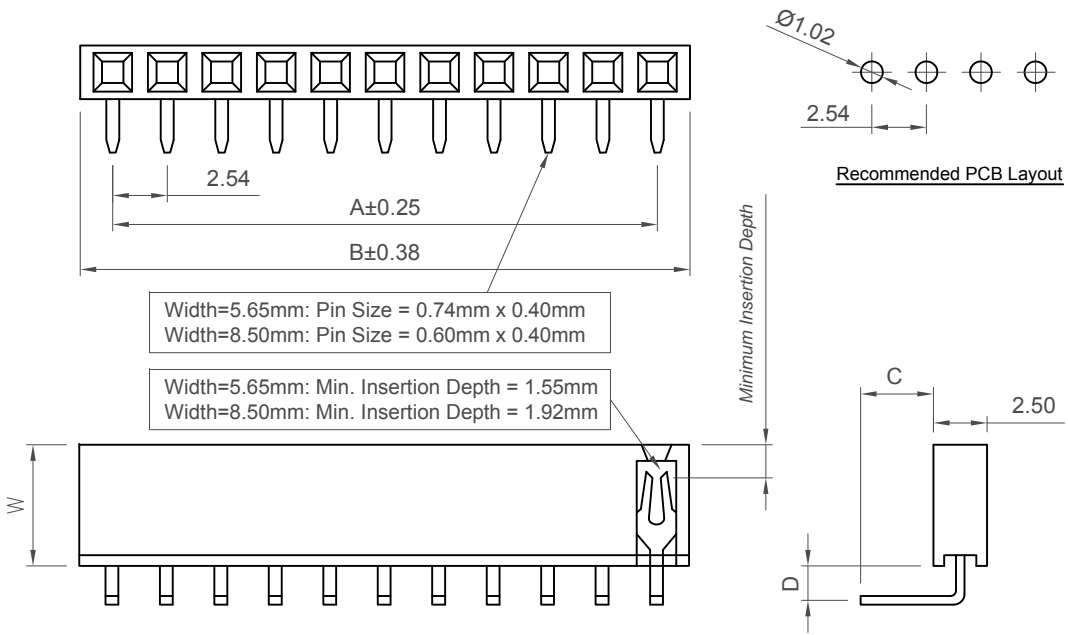


H
G
F
E
D
C
B
A



Number of Contacts	Dimension	
	A	B
2	2.54	5.58
3	5.08	8.12
4	7.62	10.66
5	10.16	13.20
6	12.70	15.74
7	15.24	18.28
8	17.78	20.82
9	20.32	23.36
10	22.86	25.90
11	25.40	28.44
12	27.94	30.98
13	30.48	33.52
14	33.02	36.06
15	35.56	38.60
16	38.10	41.14
17	40.64	43.68
18	43.18	46.22
19	45.72	48.76
20	48.26	51.30
21	50.80	53.84
22	53.34	56.38
23	55.88	58.92
24	58.42	61.46
25	60.96	64.00
26	63.50	66.54
27	66.04	69.08
28	68.58	71.62
29	71.12	74.16
30	73.66	76.70
31	76.20	79.24
32	78.74	81.78
33	81.28	84.32
34	83.82	86.86
35	86.36	89.40
36	88.90	91.94
37	91.44	94.48
38	93.98	97.02
39	96.52	99.56
40	99.06	102.10

Specifications 规格

Electrical 电气
 Current Rating 电流额定值: 3 Amp
 Insulator Resistance 绝缘电阻值: 1000 MΩ min.
 Dielectric Withstanding 耐电压: AC 600 V
 Contact Resistance 接触电阻值: 20mΩ max.

Material 物料
 Contact Material 端子物料: Copper Alloy
 Insulator Material 绝缘体物料:
 Standard 标准物料: Polyamide 聚酰胺, Nylon 6T, UL 94V-0
 Options 可选物料: Polyester 聚酯, LCP, UL 94V-0
 Polyester 聚酯, PBT, UL94-V0

Mechanical & Environmental 机械 & 环境
 Operating Temperature 工作温度: -40°C to +105°C
 Soldering Process 可焊性:
 Nylon 6T (Standard 标准物料) -
 IR Reflow 回流焊: 260°C for 10 sec.
 Wave 波峰焊: 230°C for 5-10 sec.
 Manual Solder 人工焊接: 350°C for 3-5 sec
 PBT (Option 可选物料) - Manual Solder 人工焊接: 330°C for 3-5 sec.
 (Not suitable for hi-temp process 不适合高温处理)
 LCP (Option 可选物料) -
 IR Reflow 回流焊: 260°C for 10 sec.
 Wave 波峰焊: 250°C for 5-10 sec.
 Manual Solder 人工焊接: 350°C for 3-5 sec

Mates with 配套之母座 (Subject to pin length 在端子长度适合的条件下):
 BG020 BG030 BG035 BG055 BG060
 BG075 BG080

Ordering Grid

BG145-XX-X-X-XXXX-XXXX-X-X

No. of Contacts: 02 to 40

Contact Plating:
 A = Gold Flash All Over (Standard)
 B = Selective Gold Flash Contact
 Area/Tin On Tail
 C = Tin All Over
 G = 10µ" Gold Contact Area/Tin On Tail
 I = 30µ" Gold Contact Area/Tin On Tail

Width W:
 2 = 8.50mm (Standard)
 1 = 5.65mm

Dimension D (1/100mm) (Bottom of Insulator to Pin Centre)
 0160 = 1.60mm (when W = 8.50mm) (Standard)
 0180 = 1.80mm (when W = 5.65mm)

Dimension C (1/100mm) (Insulator to Pin End)
 0320 = 3.20mm (when W = 8.50mm) (Standard)
 0375 = 3.75mm (when W = 5.65mm)

Request Samples and Quotation

Packing Options:
 D = Tube (Standard)
 G = Plastic Box
 H = Tray
 Insulator Material:
 N = Nylon 6T (Standard)
 P = PBT
 L = LCP

Part Number		Product Description	
BG145		2.54mm Pitch Socket	
Drawing Date		Single Row, Through-Hole, Horizontal	
30th October 2006			
By	AJO	Tolerances (Except as Noted)	Units:
Detail	BG145 G PCN	Length X ± 0.30 X.X ± 0.20 X.XX ± 0.15 X.XXX ± 0.10	Metric (mm)
Revision	G	Angle X° ± 5° X.X° ± 2° X.XX° ± 1° X.XXX° ± 0.5°	3rd Angle Projection
Date	21/07/15		



This drawing is confidential and copyright of Global Connector Technology, Ltd (GCT). This drawing must not be copied or disclosed without written consent. E & OE

GCT

Global Connector Technology
www.gct.co

Not to Scale	Drawn By LYH	Sheet No. 1/1
--------------	--------------	---------------