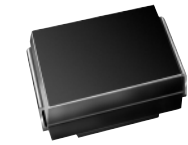


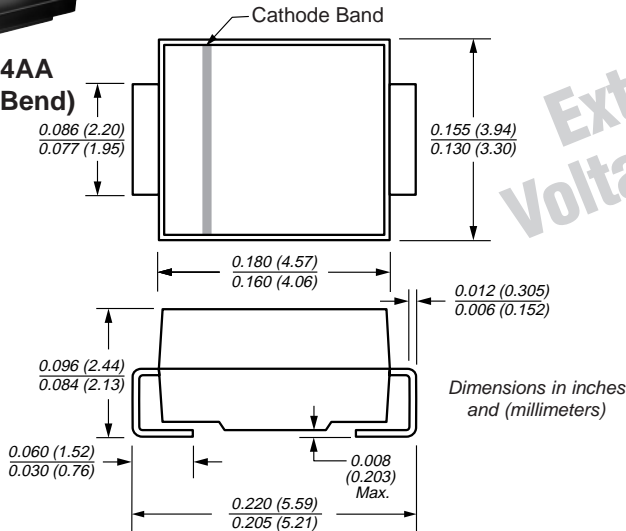


**Surface Mount TRANSZORB®  
Transient Voltage Suppressors**

$V_{(BR)}$  Unidirectional 6.8 to 540V  
 $V_{(BR)}$  Bidirectional 6.8 to 220V  
 Peak Pulse Power 600W

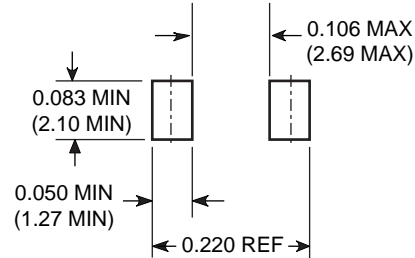


**DO-214AA  
(SMB J-Bend)**



*Extended  
Voltage Range*

**Mounting Pad Layout**



**Mechanical Data**

**Case:** JEDEC DO-214AA (SMB) molded plastic over passivated junction

**Terminals:** Solder plated, solderable per MIL-STD-750, Method 2026. High temperature soldering guaranteed: 250°C/10 seconds at terminals.

**Polarity:** For uni-directional types the band denotes the cathode, which is positive with respect to the anode under normal TVS operation.

**Standard Packaging:** 12mm tape (EIA STD RS-481)

**Weight:** 0.003 oz., 0.093 g

**Packaging Codes – Options (Antistatic):**

- 51 – 2K per Bulk box, 20K/carton
- 52 – 750 per 7" plastic Reel (12mm tape), 15K/carton
- 5B – 3.2K per 13" plastic Reel (12mm tape), 32K/carton

**Features**

- Plastic package has Underwriters Laboratory Flammability Classification 94V-0
- Low profile package with built-in strain relief for surface mounted applications
- Glass passivated junction
- Low incremental surge resistance
- 600W peak pulse power capability with a 10/1000µs waveform, repetition rate (duty cycle): 0.01%
- Excellent clamping capability
- Very fast response time

**Devices for Bidirectional Applications**

For bi-directional devices, use suffix CA (e.g. P6SMB10CA). Electrical characteristics apply in both directions.

**Maximum Ratings & Thermal Characteristics** Ratings at 25°C ambient temperature unless otherwise specified.

Parameter	Symbol	Value	Unit
Peak power dissipation with a 10/1000µs waveform <sup>(1)(2)</sup> (Fig. 1)	PPPM	Minimum 600	W
Peak pulse current with a 10/1000µs waveform <sup>(1)</sup>	IPPM	See Next Table	A
Power dissipation on infinite heatsink, T <sub>A</sub> = 50°C	PM(AV)	5.0	W
Peak forward surge current 8.3ms single half sine-wave uni-directional only <sup>(2)</sup>	IFSM	100	A
Operating junction and storage temperature range	T <sub>J</sub> , T <sub>STG</sub>	-65 to +150	°C
Thermal resistance junction to ambient air <sup>(3)</sup>	R <sub>θJA</sub>	100	°C/W
Thermal resistance junction to leads	R <sub>θJL</sub>	20	°C/W
Operating junction and storage temperature range	T <sub>J</sub> , T <sub>STG</sub>	-65 to +150	°C

**Notes:** (1) Non-repetitive current pulse, per Fig.3 and derated above T<sub>A</sub> = 25°C per Fig. 2.

(2) Mounted on 0.2 x 0.2" (5.0 x 5.0mm) copper pads to each terminal

(3) Mounted on minimum recommended pad layout

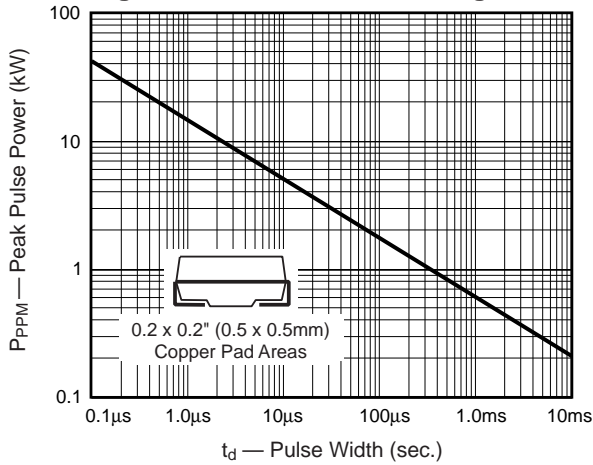
## Electrical Characteristics Ratings at 25°C ambient temperature unless otherwise specified. Vf = 3.5V at If = 50A (uni-directional only)

General Semiconductor Part Number	Device Marking Code		Breakdown Voltage V <sub>(BR)</sub> at I <sub>T</sub> <sup>(1)</sup> (V)		Test Current I <sub>T</sub> (mA)	Stand-off Voltage V <sub>WM</sub> (V)	Maximum Reverse Leakage at V <sub>WM</sub> I <sub>0</sub> <sup>(3)</sup> (μA)	Maximum Peak Pulse Current I <sub>PPM</sub> <sup>(2)</sup> (A)	Maximum Clamping Voltage at I <sub>PPM</sub> V <sub>c</sub> (V)	Maximum Temp. Coefficient of V <sub>(BR)</sub> (%/°C)
	UNI	BI	Min	Max						
P6SMB6.8A	6V8A	6V8C	6.45	7.14	10	5.80	1000	57.1	10.5	0.057
P6SMB7.5A	7V5A	7V5C	7.13	7.88	10	6.40	500	53.1	11.3	0.061
P6SMB8.2A	8V2A	8V2C	7.79	8.61	10	7.02	200	49.6	12.1	0.065
P6SMB9.1A	9V1A	9V1C	8.65	9.55	1.0	7.78	50	44.8	13.4	0.068
P6SMB10A	10A	10C	9.50	10.5	1.0	8.55	10	41.4	14.5	0.073
P6SMB11A	11A	11C	10.5	11.6	1.0	9.40	5.0	38.5	15.6	0.075
P6SMB12A	12A	12C	11.4	12.6	1.0	10.2	5.0	35.9	16.7	0.078
P6SMB13A	13A	13C	12.4	13.7	1.0	11.1	5.0	33.0	18.2	0.081
P6SMB15A	15A	15C	14.3	15.8	1.0	12.8	1.0	28.3	21.2	0.084
P6SMB16A	16A	16C	15.2	16.8	1.0	13.6	1.0	26.7	22.5	0.086
P6SMB18A	18A	18C	17.1	18.9	1.0	15.3	1.0	23.8	25.2	0.088
P6SMB20A	20A	20C	19.0	21.0	1.0	17.1	1.0	21.7	27.7	0.090
P6SMB22A	22A	22C	20.9	23.1	1.0	18.8	1.0	19.6	30.6	0.092
P6SMB24A	24A	24C	22.8	25.2	1.0	20.5	1.0	18.1	33.2	0.094
P6SMB27A	27A	27C	25.7	28.4	1.0	23.1	1.0	16.0	37.5	0.096
P6SMB30A	30A	30C	28.5	31.5	1.0	25.6	1.0	14.5	41.4	0.097
P6SMB33A	33A	33C	31.4	34.7	1.0	28.2	1.0	13.1	45.7	0.098
P6SMB36A	36A	36C	34.2	37.8	1.0	30.8	1.0	12.0	49.9	0.099
P6SMB39A	39A	39C	37.1	41.0	1.0	33.3	1.0	11.1	53.9	0.100
P6SMB43A	43A	43C	40.9	45.2	1.0	36.8	1.0	10.1	59.3	0.101
P6SMB47A	47A	47C	44.7	49.4	1.0	40.2	1.0	9.3	64.8	0.101
P6SMB51A	51A	51C	48.5	53.6	1.0	43.6	1.0	8.6	70.1	0.102
P6SMB56A	56A	56C	53.2	58.8	1.0	47.8	1.0	7.8	77.0	0.103
P6SMB62A	62A	62C	58.9	65.1	1.0	53.0	1.0	7.1	85.0	0.104
P6SMB68A	68A	68C	64.6	71.4	1.0	58.1	1.0	6.5	92.0	0.104
P6SMB75A	75A	75C	71.3	78.8	1.0	64.1	1.0	5.8	103	0.105
P6SMB82A	82A	82C	77.9	86.1	1.0	70.1	1.0	5.3	113	0.105
P6SMB91A	91A	91C	86.5	95.5	1.0	77.8	1.0	4.8	125	0.106
P6SMB100A	100A	100C	95.0	105	1.0	85.5	1.0	4.4	137	0.106
P6SMB110A	110A	110C	105	116	1.0	94.0	1.0	3.9	152	0.107
P6SMB120A	120A	120C	114	126	1.0	102	1.0	3.6	165	0.107
P6SMB130A	130A	130C	124	137	1.0	111	1.0	3.4	179	0.107
P6SMB150A	150A	150C	143	158	1.0	128	1.0	2.9	207	0.108
P6SMB160A	160A	160C	152	168	1.0	136	1.0	2.7	219	0.108
P6SMB170A	170A	170C	162	179	1.0	145	1.0	2.6	234	0.108
P6SMB180A	180A	180C	171	189	1.0	154	1.0	2.4	246	0.108
P6SMB200A	200A	200C	190	210	1.0	171	1.0	2.2	274	0.108
P6SMB220A	220A	220C	209	231	1.0	185	1.0	1.8	328	0.108
P6SMB250A	250A	—	237	263	1.0	214	1.0	1.74	344	0.110
P6SMB300A	300A	—	285	315	1.0	256	1.0	1.45	414	0.110
P6SMB350A	350A	—	333	368	1.0	300	1.0	1.24	482	0.110
P6SMB400A	400A	—	380	420	1.0	342	1.0	1.10	548	0.110
P6SMB440A	440A	—	418	462	1.0	376	1.0	1.00	602	0.110
P6SMB480A	480A	—	456	504	1.0	408	1.0	0.91	658	0.110
P6SMB510A	510A	—	485	535	1.0	434	1.0	0.86	698	0.110
P6SMB540A	540A	—	513	567	1.0	459	1.0	0.81	740	0.110

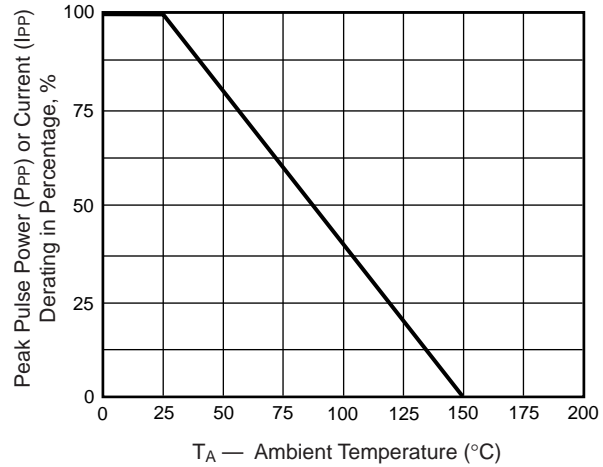
- Notes:** (1) Pulse test:  $t_p \leq 50\text{ms}$   
(2) Surge current waveform per Fig. 3 and derate per Fig. 2  
(3) For bidirectional types with V<sub>WM</sub> of 10 volts and less, the I<sub>D</sub> limit is doubled  
(4) All terms and symbols are consistent with ANSI/IEEE C62.35

**Ratings and Characteristic Curves** ( $T_A = 25^\circ\text{C}$  unless otherwise noted)

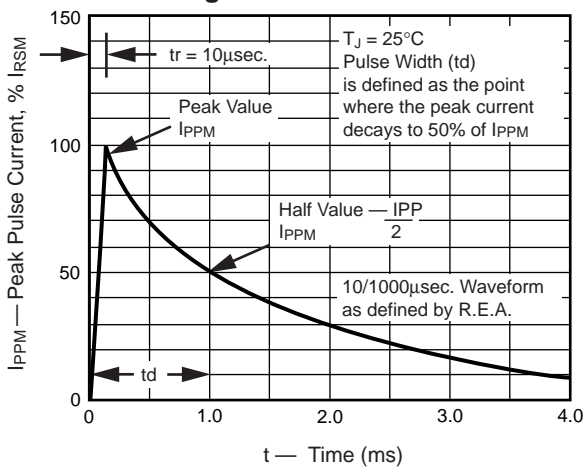
**Fig. 1 – Peak Pulse Power Rating Curve**



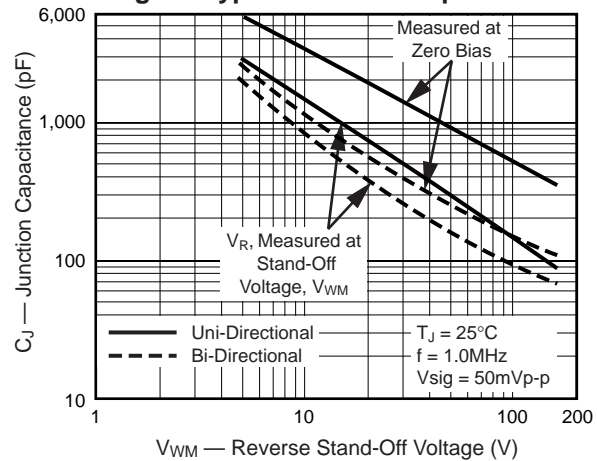
**Fig. 2 – Pulse Derating Curve**



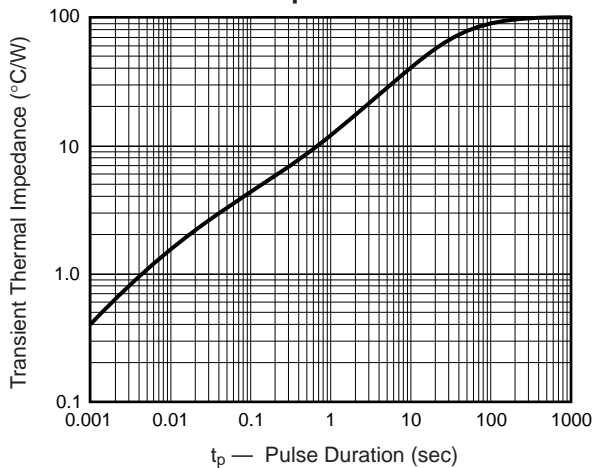
**Fig. 3 – Pulse Waveform**



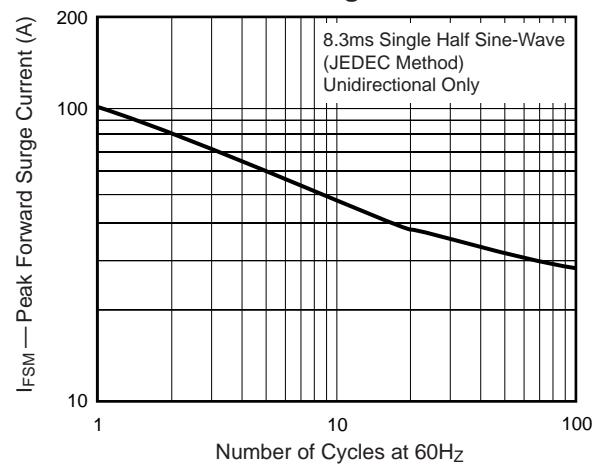
**Fig. 4 – Typical Junction Capacitance**



**Fig. 5 – Typical Transient Thermal Impedance**



**Fig. 6 – Maximum Non-Repetitive Peak Forward Surge Current**





## Notice

Specifications of the products displayed herein are subject to change without notice. Vishay Intertechnology, Inc., or anyone on its behalf, assumes no responsibility or liability for any errors or inaccuracies.

Information contained herein is intended to provide a product description only. No license, express or implied, by estoppel or otherwise, to any intellectual property rights is granted by this document. Except as provided in Vishay's terms and conditions of sale for such products, Vishay assumes no liability whatsoever, and disclaims any express or implied warranty, relating to sale and/or use of Vishay products including liability or warranties relating to fitness for a particular purpose, merchantability, or infringement of any patent, copyright, or other intellectual property right.

The products shown herein are not designed for use in medical, life-saving, or life-sustaining applications. Customers using or selling these products for use in such applications do so at their own risk and agree to fully indemnify Vishay for any damages resulting from such improper use or sale.