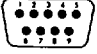
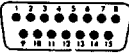

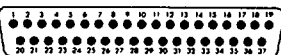
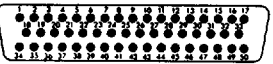


S*MA Series

- Polyester two piece bonded insulator
- Crimp termination
- Qualified to MIL-C-24308
- Removable rear entry/rear release machined contacts

Shells		Contacts		Connectors without Contacts		Connectors with Contacts	
Standard Configurations		P: Pin	S: Socket	Commercial	Military	Commercial	Military
E	9 contacts 	P	S	SEMA09PLN SEMA09SLN	M24308/4-259F M24308/2-281F	SEMA09PN SEMA09SN	M24308/4-1F M24308/2-1F
A	15 contacts 	P	S	SAMA15PLN SAMA15SLN	M24308/4-260F M24308/2-282F	SAMA15PN SAMA15SN	M24308/4-2F M24308/2-2F
B	25 contacts 	P	S	SBMA25PLN SBMA25SLN	M24308/4-261F M24308/2-283F	SBMA25PN SBMA25SN	M24308/4-3F M24308/2-3F
C	37 contacts 	P	S	SCMA37PLN SCMA37SLN	M24308/4-262F M24308/2-284F	SCMA37PN SCMA37SN	M24308/4-4F M24308/2-4F
D	50 contacts 	P	S	SDMA50PLN SDMA50SLN	M24308/4-263F M24308/2-285F	SDMA50PN SDMA50SN	M24308/4-5F M24308/2-5F

Note: *Connectors and contacts can be purchased separately. Connectors purchased without contacts will not be marked with "L" designations. Military Connectors M24308 will be marked with proper military number for connector with contacts even when connector is ordered without contacts per the military specification. Ex: if M24308/4-259F (SEMA09PLN) ordered, marking on connector will be M24308/4-1F (SEMA09PN) depicting connector with contacts

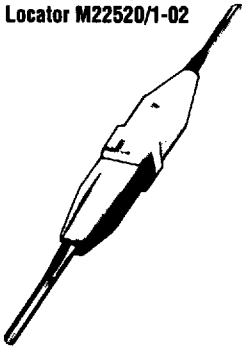
For mounting variations, technical and dimensional information see page 4-6

Crimp Contacts

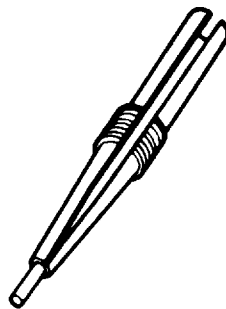
Tooling:

Pliers M22520/1-01

Locator M22520/1-02



(M81969/39-01) Insertion Tool
color code green/white tool



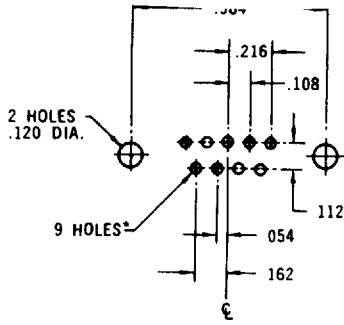
Extraction tool
8630-06A

Contacts	Pin	Socket
Government Designation	MIL-C-39029/64-369	MIL-C-39029/63-368

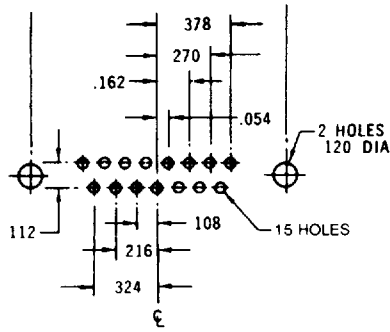
Contacts accommodate wire sizes 20, 22 and 24.
Maximum insulation O.D. is .050 (1.27)

Board Cutouts

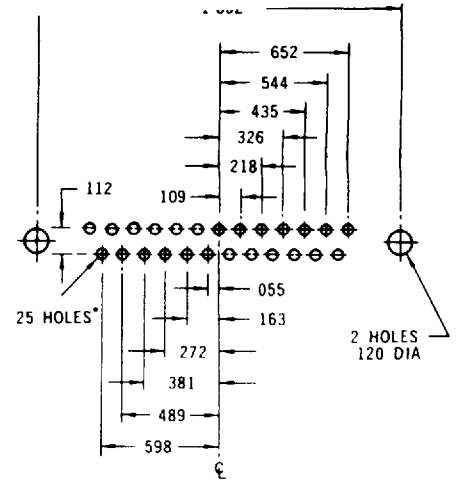
DEM



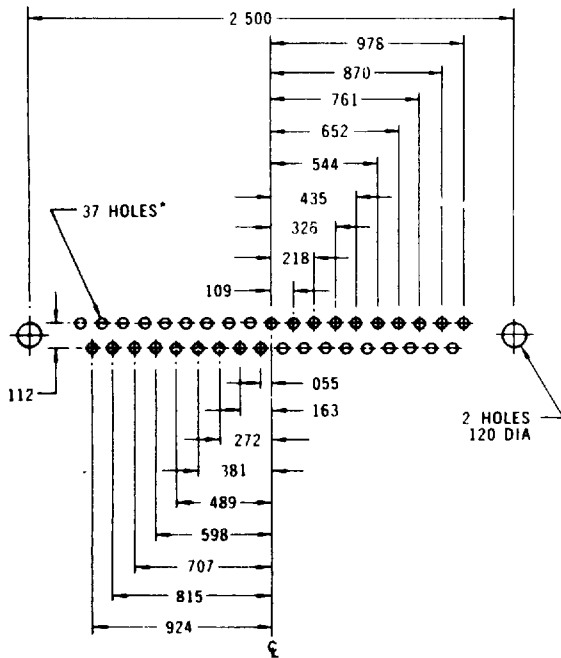
DAM



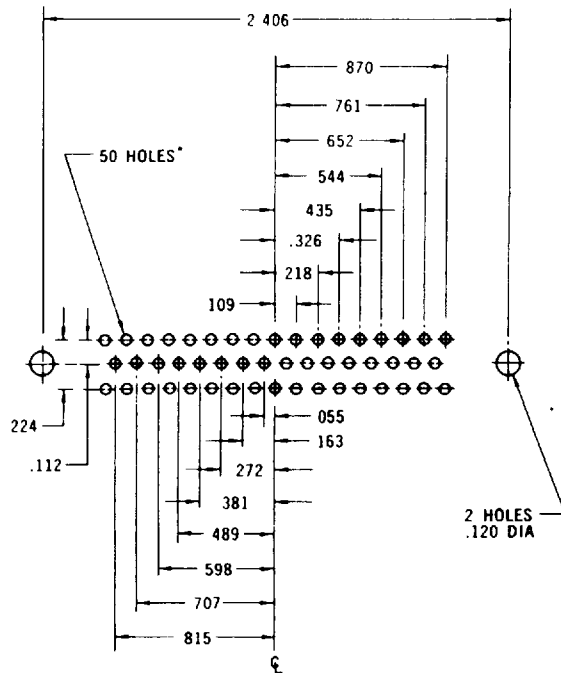
DBM



DCM



DDM



Diameter PC Tail
030"

Recommended PC Board Hole Diameter
045"

Technical Data

Description	D * M Series	D * MW Series	S * MA Series
	MIL-C-24308 QPL	Combination layouts coax, power and/or high voltage contacts	MIL-C-24308 DPL Crimp

Materials and Finishes

Shell	Steel, Yellow Chromate Passivation Over Cadmium Plate (Zinc and Tin Available)		
Insulator	Polyester, two piece bonded	Polyester two piece bonded Type GPT-30F	Polyester two piece bonded Type GPT-30F
Contact	Machined Copper alloy	Machined Copper alloy	Machined Copper alloy
Contact Plating	Gold	Gold	Gold
Contact Termination	Solder Cup Straight PCB Angled PCB Wirewrap	Solder cup Straight PCB Angled PCB Coax. crimp solder Power. solder	Crimp Rear release 20-24 AWG wire acceptance

Mechanical

Removable Contacts	No	Coax, power and/or high voltage only	Yes
Pin Diameter	.030	Standard Contacts .030	.040
Maximum Wire Size	AWG 20	Standard AWG 20	AWG 20
Max. wire diameter including insulation	.083*	Standard .083	.067*
Contact Retention within insulator	9 lbs	9 lbs	9 lbs

Electrical

Maximum Voltage V RMS 50Hz	1,000V	1,000V	1,000V
Rated Voltage V RMS 50Hz	300V	300V	300V
Maximum Voltage at altitude V RMS 50Hz	250V	250V	250V
Maximum Current Rating per Contact	7.5A	Standard 7.5A Power 40A	7.5A
Insulation Resistance	≥5,000MΩ	≥5,000MΩ	≥5,000MΩ
Contact Resistance	≤5mΩ	≤5mΩ	≤5mΩ

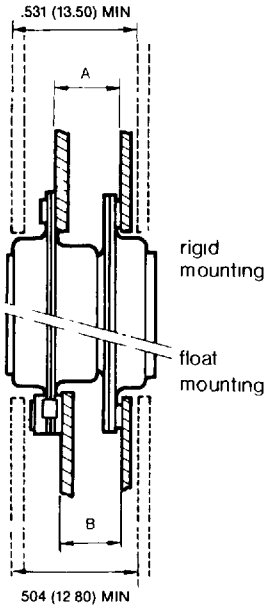
Temperature

Operating Temperature Range	-55° to +125° C	-55° to +125° C	-55° to +125° C
------------------------------------	-----------------	-----------------	-----------------

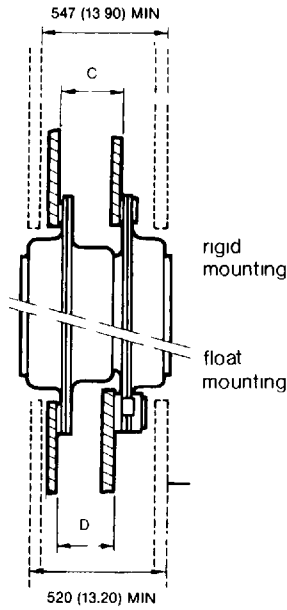
Mounting Dimensions

Mounting Examples: D*M, D*MW, S*MA

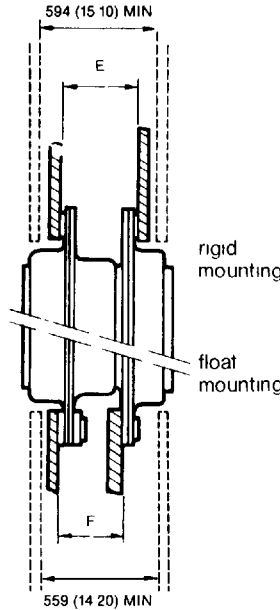
Front panel mounting
uncoupling distance



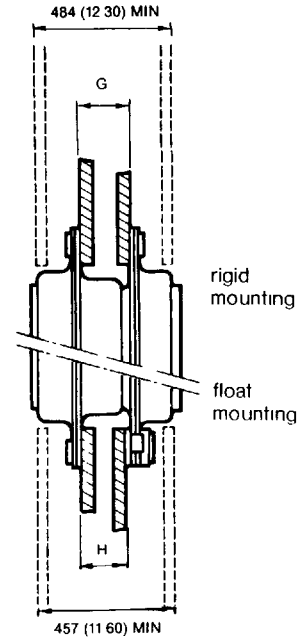
Rear panel mounting
uncoupling distance



Mixed mounting
uncoupling distance



Mixed mounting
uncoupling distance

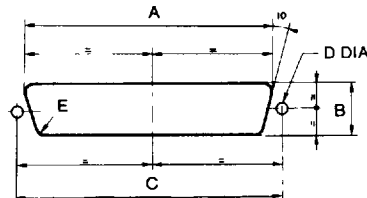
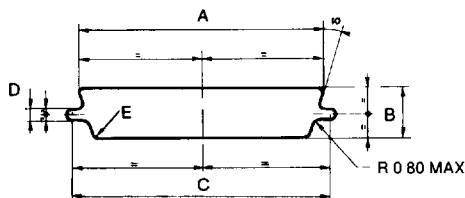


Mounting Examples Table

Size	A	B	C	D	E	F	G	H
E	301	270	301	270	348	325	254	222
A	301	270	301	270	348	325	254	222
B	297	266	297	266	344	321	250	219
C	297	266	313	281	360	329	250	219
D	297	266	313	281	360	329	250	219

NOTE: It is recommended that only one of a mated pair of connectors should have float mounting

Panel Cutouts: D*M, D*MW, S*MA

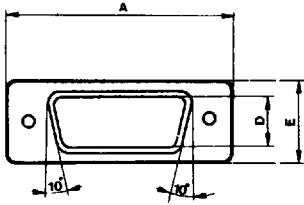


Shell	Type of Mounting	Mounting Position	A (mm)	B (mm)	C (mm)	D (mm)	E (mm)
E	Rigid	Front	0 874	512	0 984	126	083
		Rear	0 807	449	0 984	126	130
	Float	Front	0 906	543	0 984	087	083
		Rear	0 839	480	0 984	087	130
A	Rigid	Front	1 201	512	1 312	126	083
		Rear	1 134	449	1 312	126	130
	Float	Front	1 232	543	1 312	087	083
		Rear	1 165	480	1 312	087	130
B	Rigid	Front	1 744	512	1 852	126	083
		Rear	1 673	449	1 852	126	130
	Float	Front	1 776	543	1 852	087	083
		Rear	1 705	480	1 852	087	130
C	Rigid	Front	2 390	512	2 500	126	083
		Rear	2 327	449	2 500	126	130
	Float	Front	2 421	543	2 500	087	083
		Rear	2 354	480	2 500	087	130
D	Rigid	Front	2 295	622	2 406	126	083
		Rear	2 217	555	2 406	126	130
	Float	Front	2 331	654	2 406	087	083
		Rear	2 252	567	2 406	087	130

Shell Dimensions

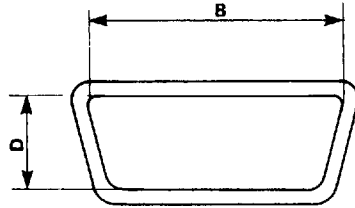
Rigid Mounting

front view



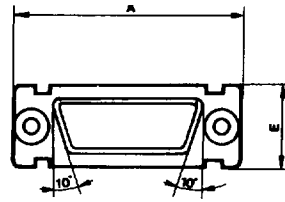
dimensions of shell connecting faces (in direction of arrow)

male connector pin contacts

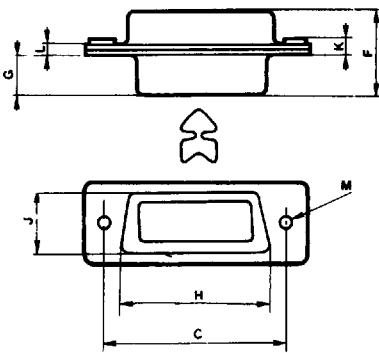


Float Mounting

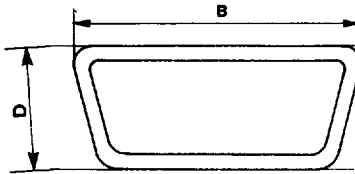
front view



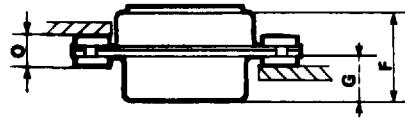
view from termination side



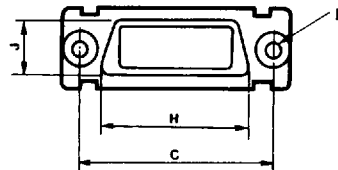
female connector socket contacts



rear or front panel mounting



view from termination side



P: Pin
S: Socket

SHELL	U * M D * MW S * MA	A	B	C	D	E + .010 - 0	F MAX	G - .006 - 0	H - .004	J - .002	K - .008	L + .004 - 0	M + .003 - .004	N + .004 - 0	O MAX
E	P	1.204	0.667	0.984	.331	.485	.432	.232	.758	.425	.043	.031	.122	.087	.110
	S	1.204	0.642	0.984	.311	.485	.439	.240	.758	.425	.043	.031	.122	.087	.110
A	P	1.532	0.995	1.312	.331	.485	.432	.232	1.086	.425	.043	.031	.122	.087	.110
	S	1.532	0.970	1.312	.311	.485	.439	.240	1.086	.425	.043	.031	.122	.087	.110
B	P	2.079	1.536	1.852	.331	.485	.432	.224	1.627	.425	.043	.031	.122	.087	.110
	S	2.079	1.510	1.852	.311	.485	.439	.240	1.627	.425	.043	.031	.122	.087	.110
C	P	2.720	2.183	2.500	.331	.485	.436	.224	2.275	.425	.059	.039	.122	.087	.118
	S	2.720	2.158	2.500	.311	.485	.439	.240	2.275	.425	.043	.031	.122	.087	.110
D	P	2.626	2.081	2.406	.437	.595	.436	.224	2.181	.535	.059	.039	.122	.087	.118
	S	2.626	2.061	2.406	.420	.595	.439	.240	2.181	.535	.043	.031	.122	.087	.110