

Powerex Fast and Super Fast Recovery diodes are designed for use in applications requiring fast switching. The ratings, configuration package outlines are shown below.

For more detailed specifications, please refer to our [Powerex Semiconductor Data Book](#), Volume 3 (Pub # 5A-000) or contact your local Powerex manufacturers' representative.

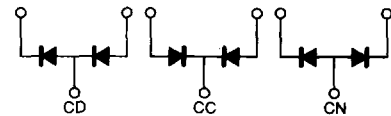
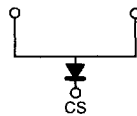
Fast Recovery Diode POW-R-BLOK™ Selector Table

Type	Single Diode S or HA				Dual Diode D	
$I_{DC}(A)$ / $V_{RRM}(V)$	500	600	1000	1200	600	1200
20 (25A)		CS340602(F1)		CS341202 (F1) RM25HG-24S (F2)*	CD240602 (F7)	CD241202 (F7)
50		CS240650 (F3) RM50HG-12S (F2)*		CS241250 (F3)	CD240650 (F7)	
100		CS240610 (F3)		CS241210 (F3)		
200			CS241020 (F4)			
250	CS640525 (F5)					
300				CS641230 (F5)		
400				RM400HA-24S (F6)		

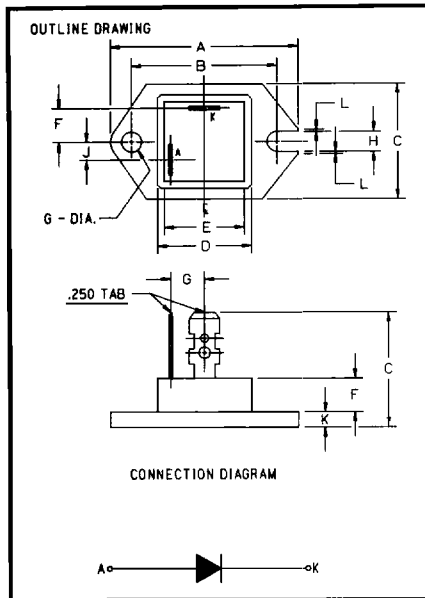
Type	Common Cathode Dual Diode CC			Common Anode Dual Diode CN		
$I_{DC}(A)$ / $V_{RRM}(V)$	300	600	1200	300	600	1200
20 (25A)	CC2403020N (F7)	CC240602 (F7) CC2406020N (F7)	CC241202 (F7)	CN2403020N (F7)	CN240602 (F7) CN2406020N (F7)	CN241202 (F7)
50	CC2403500N (F7)	CC240650 (F7) CC2406500N (F7)	CC241250 (F7)	CN2403500N (F7)	CN240650 (F7) CN2406500N (F7)	CN241250 (F7)
100		CC240610 (F7)	CC241210 (F7)		CN240610 (F7)	CN241210 (F7)

*Expressly designed for use with IGBT and IPM "snubber" circuits.

Connection Diagrams



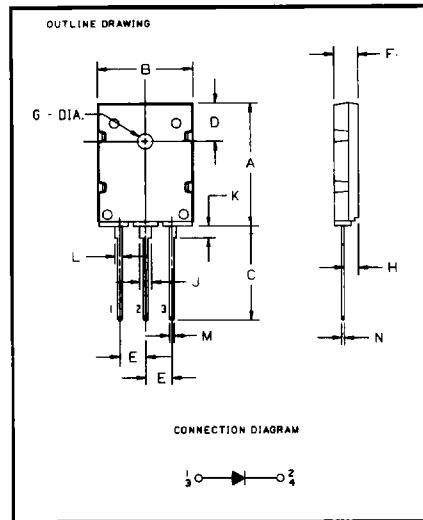
F1



Dimension	Inches	Millimeters
A	1.54	39.0
B	1.189 ± 0.008	32.2 ± 0.2
C	0.94	24.0
D	0.77	19.5
E	0.65	16.6
F	0.28	7.0
G	0.165 ± 0.004 Dia.	4.2 ± 0.1 Dia.
H	0.16	4.2
J	0.14	3.7
K	0.12	3.2
L	0.02	0.4

CS340602, CS341202

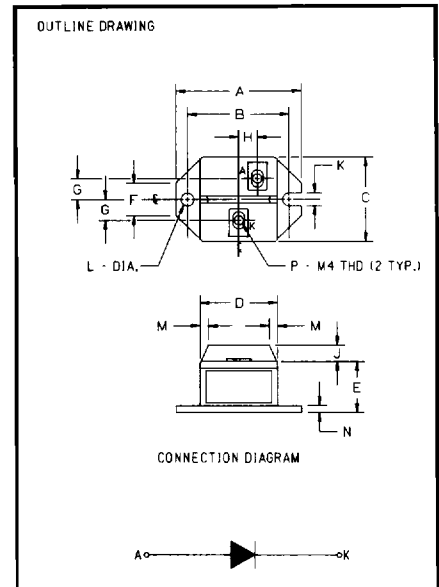
F2



Dimension	Inches	Millimeters
A	1.02 ± 0.02	26.0 ± 0.5
B	0.81 Max.	20.5 Max.
C	0.79 Min.	20.0 Min.
D	0.24 ± 0.008	6.0 ± 0.2
E	0.214 ± 0.012	5.45 ± 0.3
F	0.2 ± 0.012	5.0 ± 0.3
G	0.126 ± 0.008 Dia.	3.2 ± 0.2 Dia.
H	0.12 ± 0.012	3.0 ± 0.3
J	0.10 ± 0.012	2.5 ± 0.3
K	0.10	2.5
L	0.08 ± 0.012	2.0 ± 0.3
M	0.04 ± 0.008	1.0 ± 0.2
N	0.02 ± 0.008	0.6 ± 0.2

RM25HG-24S, RM50HG-12S

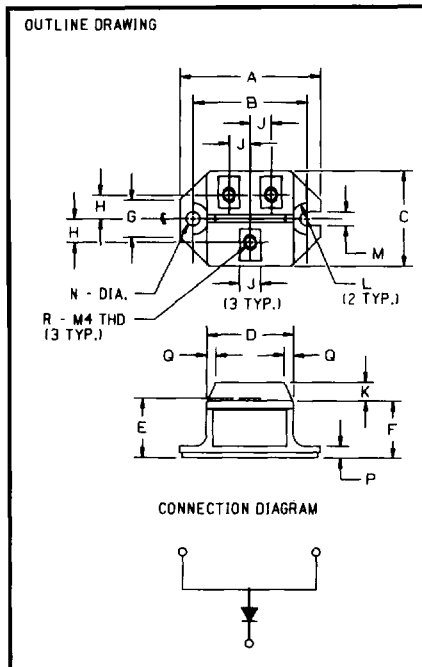
F3



Dimension	Inches	Millimeters
A	2.07	53.0
B	1.705 ± 0.008	43.3 ± 0.2
C	1.42	36.0
D	1.3	33.0
E	0.87	22.0
F	0.55	14.0
G	0.35	9.0
H	0.31	8.0
J	0.28	7.0
K	0.22	5.5
L	0.217 Dia.	5.5 Dia.
M	0.14	3.5
N	0.12	3.0
P	M4 Metric	M4

CS240610, CS241250, CS241210,
 CS240650

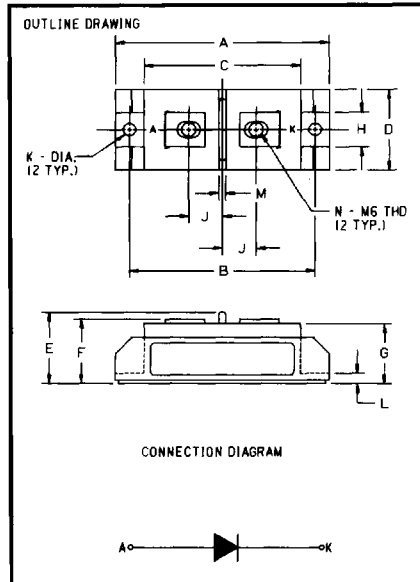
F4



Dimension	Inches	Millimeters
A	2.11	53.5
B	1.705 ± 0.008	43.3 ± 0.2
C	1.44	36.5
D	1.3	33.0
E	0.92	23.5
F	0.87	22.0
G	0.55	14.0
H	0.35	9.0
J	0.31	8.0
K	0.28	7.0
L	0.24 Rad.	6.0 Rad.
M	0.21	5.3
N	0.209 Dia.	5.3 Dia.
P	0.18	4.5
Q	0.14	3.5
R	M4 Metric	M4

CS241020

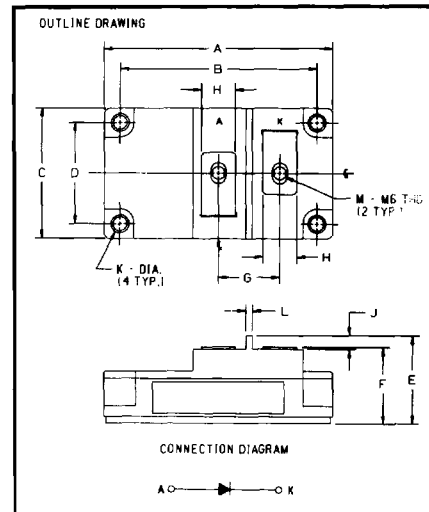
F5



Dimension	Inches	Millimeters
A	3.63 ± 0.01	92.2 ± 0.25
B	3.15 ± 0.008	80.0 ± 0.2
C	2.657 ± 0.01	67.5 ± 0.25
D	1.378 +0.012/-0.0	35.0 +0.3/-0.0
E	1.22	31.0
F	1.1	28.0
G	1.02	26.0
H	0.59	15.0
J	0.57	14.5
K	0.213 ± 0.004 Dia.	5.4 ± 0.1 Dia.
L	0.18	4.5
M	0.12	3.0
N	M6 Metric	M6

CS640525, CS641230

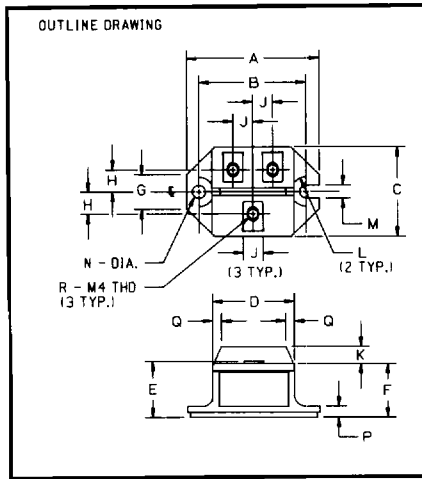
F6



Dimension	Inches	Millimeters
A	4.25 Max.	108.0 Max.
B	3.661 ± 0.012	93.0 ± 0.3
C	2.44 Max.	62.0 Max.
D	1.89 ± 0.012	48.0 ± 0.3
E	1.63 Max.	41.5 Max.
F	1.42 Max.	36.0 Max.
G	1.14	29.0
H	0.63	16.0
J	0.26	6.5
K	0.256 Dia.	6.5 Dia.
L	0.12	3.0
M	M6 Metric	M6

RM400HA-24S

F7



Dimension	Inches	Millimeters
A	2.11	53.5
B	1.705 ± 0.008	43.3 ± 0.2
C	1.44	36.5
D	1.3	33.0
E	0.92	23.5
F	0.87	22.0
G	0.55	14.0
H	0.35	9.0
J	0.31	8.0
K	0.28	7.0
L	0.24 Rad.	6.0 Rad.
M	0.21	5.3
N	0.209 Dia.	5.3 Dia.
P	0.18	4.5
Q	0.14	3.5
R	M4 Metric	M4

CC2403020N, CC2403500N,
 CC240602, CC240650, CC240610,
 CC2406020N, CC2406500N,
 CC241202, CC241250, CC241210,
 CD240602, CD240650, CD241202,
 CN2403020N, CN2403500N,
 CN240602, CN240650, CN240610,
 CN2406020N, CN2406500N,
 CN241202, CN241250, CN241210