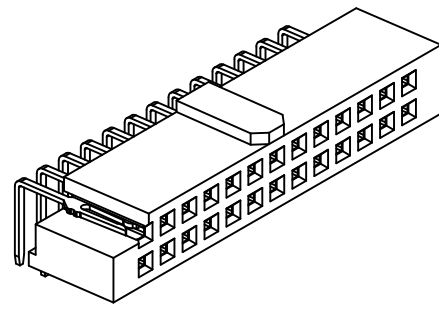
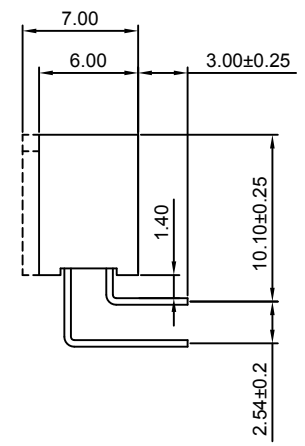
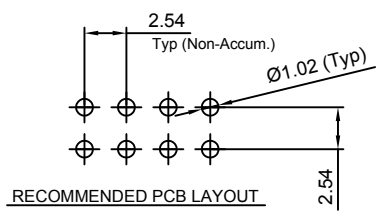
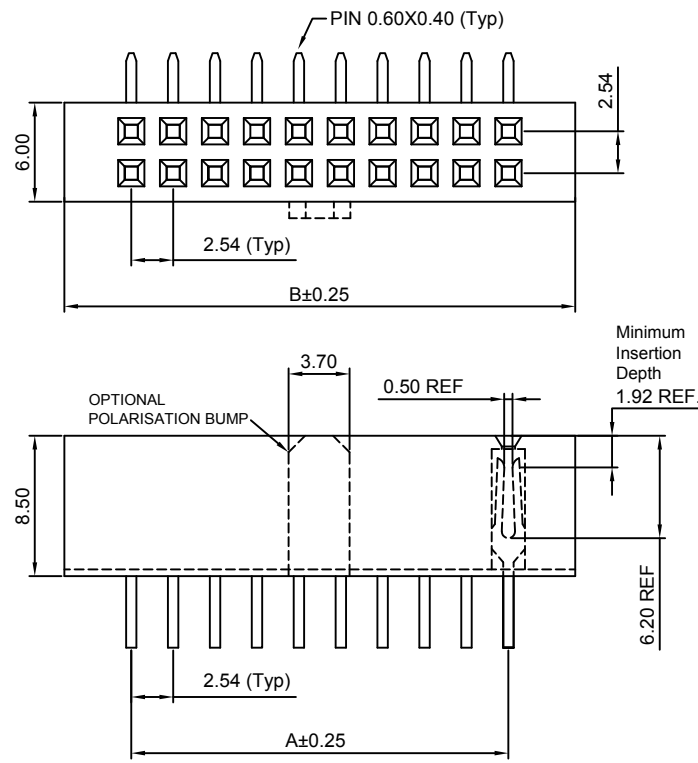


A  
B  
C  
D  
E  
F  
G  
H



CONTACTS	DIMENSIONS	
	A	B
06	5.08	12.50
08	7.62	15.04
10	10.16	17.58
12	12.70	20.12
14	15.24	22.66
16	17.78	25.20
18	20.32	27.74
20	22.86	30.28
22	25.40	32.82
24	27.94	35.36
26	30.48	37.90
28	33.02	40.44
30	35.56	42.98
32	38.10	45.52
34	40.64	48.06
36	43.18	50.60
38	45.72	53.14
40	48.26	55.68
42	50.80	58.22
44	53.34	60.76
46	55.88	63.30
48	58.42	65.84
50	60.96	68.38
52	63.50	70.92
54	66.04	73.46
56	68.58	76.00
58	71.12	78.54
60	73.66	81.08
62	76.20	83.62
64	78.74	86.16
66	81.28	88.70
68	83.82	91.24
70	86.36	93.78
72	88.90	96.32

**SPECIFICATIONS 规格**

CURRENT RATING 电流额定值: 3 AMP  
 INSULATOR RESISTANCE 绝缘电阻值: 1000 MΩ Min.  
 CONTACT RESISTANCE 接触电阻值: 20mΩ Max.  
 DIELECTRIC WITHSTANDING 耐电压: AC 600 V  
 OPERATING TEMPERATURE 工作温度: -40°C TO +105°C  
 CONTACT MATERIAL 端子物料: COPPER ALLOY

INSULATOR MATERIAL 绝缘体物料:

STANDARD 标准物料: POLYAMIDE 聚酰胺, NYLON 6T, UL 94-V0

OPTIONS 可选物料: POLYESTER 聚酯, LCP, UL 94-V0

OR POLYESTER 聚酯, PBT, UL94-V0

SOLDERING PROCESS 可焊性:

NYLON 6T (STANDARD 标准物料) -

IR REFLOW 回流焊: 260°C for 10 sec.

WAVE 波峰焊: 230°C for 5-10 sec.

MANUAL SOLDER 人工焊接: 350°C for 3-5 sec

PBT (OPTION 可选物料) - MANUAL SOLDER 人工焊接: 330°C for 3-5 sec.

(NOT SUITABLE FOR HI-TEMP PROCESS 不适合高温处理)

LCP (OPTION 可选物料) -

IR REFLOW 回流焊: 260°C for 10 sec.

WAVE 波峰焊: 250°C for 5-10 sec.

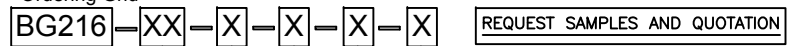
MANUAL SOLDER 人工焊接: 350°C for 3-5 sec

MATES WITH 配套之母座 (SUBJECT TO PIN LENGTH 在端子长度适合的条件下):

BG026 BG044 BG046 BG047 - Allowing perfect polarisation

- Non-Polarised mating connections available - contact GCT for details

**Ordering Grid**



No. of Contacts  
06 to 72

A = Gold Flash All Over (Standard)  
 B = Selective Gold Flash Contact Area/  
 Tin On Tail

C = Tin All Over  
 G = 10µ" Gold Contact Area/Tin On Tail  
 I = 30µ" Gold Contact Area/Tin On Tail

REQUEST SAMPLES AND QUOTATION

Packing Options  
**D = Tube (Standard)**  
 G = Plastic Box

Insulator Material  
**N = Nylon 6T (Standard)**  
 P = PBT  
 L = LCP

Polarisation Bump  
 0 = Without Bump  
 1 = With Bump

By	BC
DETAIL	DRAWING RELEASE
REV	A
DATE	09/04/07



Tolerances (Except as noted)	Part Number:-	Date:-
Dimensions in mm	BG216	09 APR 07
X ± 5°	Description:-	
X.X ± 0.38	2.54mm PITCH SOCKET, DUAL ROW, THROUGH-HOLE, HORIZONTAL	
X.XX ± 0.25		
X.XXX ± 0.13		
Third Angle Projection	© THIS DRAWING IS CONFIDENTIAL AND MUST NOT BE COPIED OR DISCLOSED WITHOUT WRITTEN CONSENT	



Scale	Revision	Material	Drawn by	Sheet No.
NTS	A	See Note	BC	E & OE 1/1