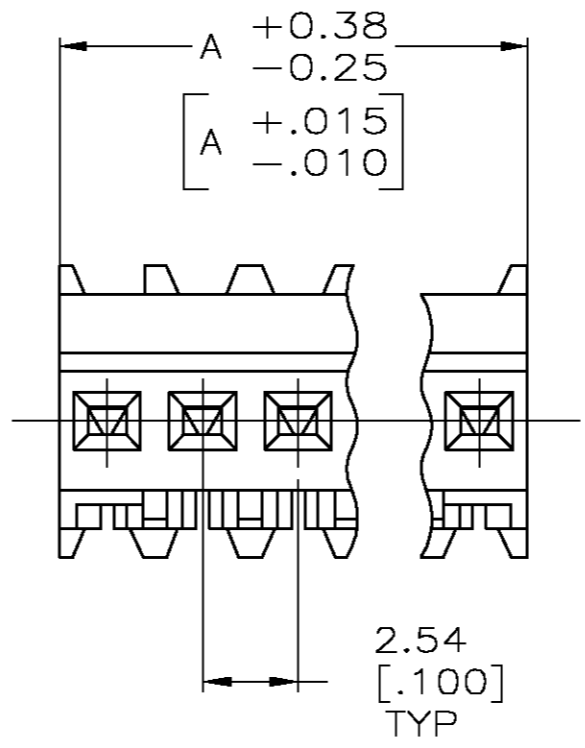
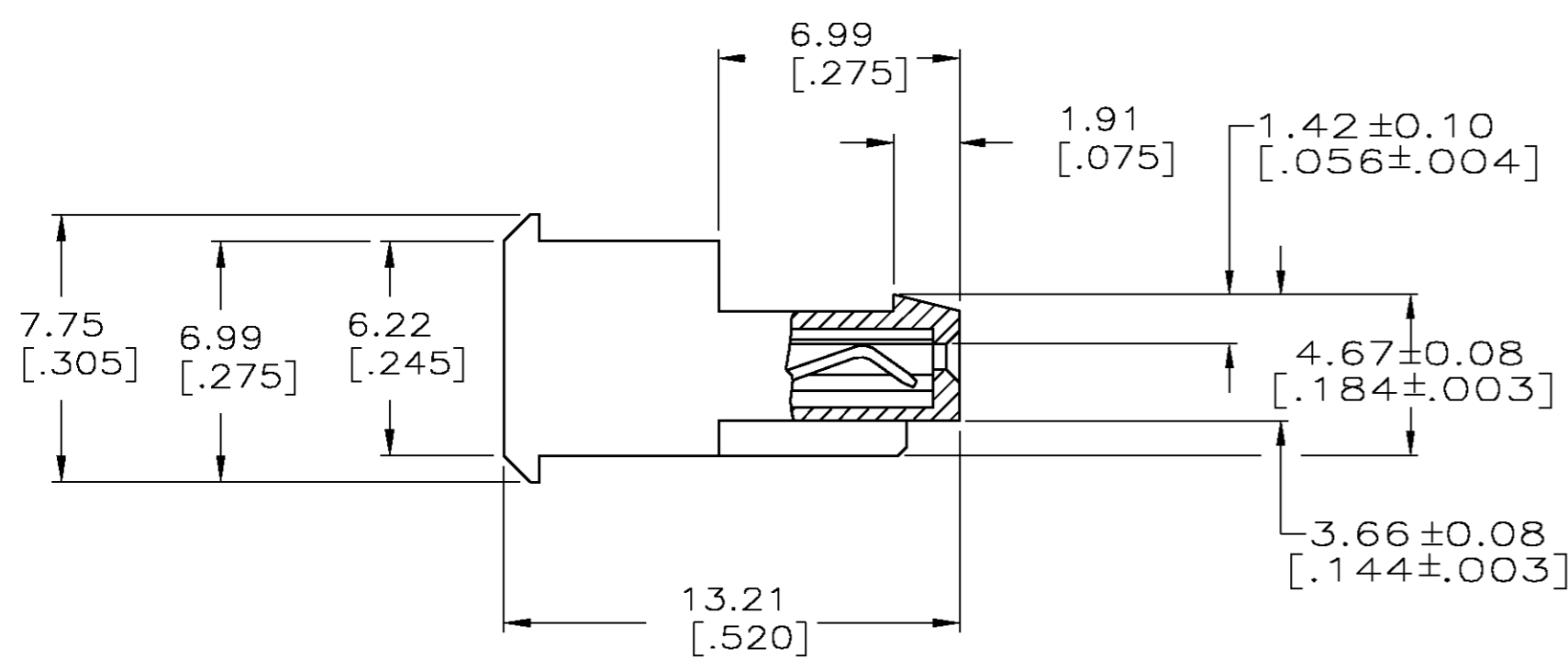
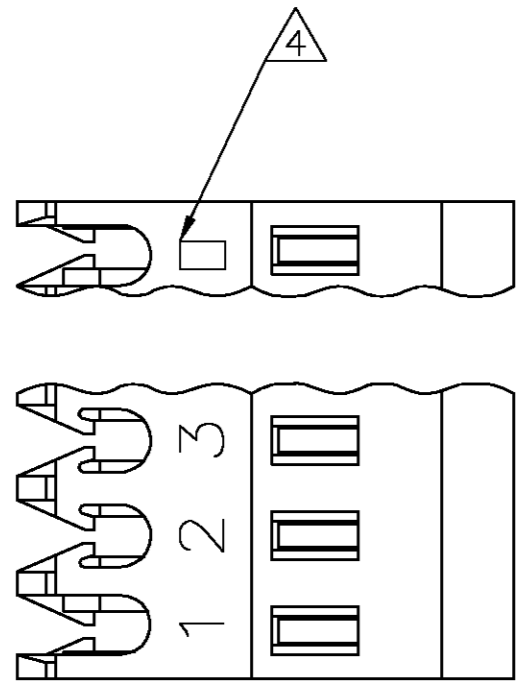


THIS DRAWING IS UNPUBLISHED. RELEASED FOR PUBLICATION
 © COPYRIGHT BY TYCO ELECTRONICS CORPORATION. ALL RIGHTS RESERVED.

| LOC | DIST | REVISIONS | | | |
|-----|------|-------------|------------------------------|-----------|-------|
| P | LTR | DESCRIPTION | DATE | DWN | APVD |
| CM | 00 | A | REVISION PER EC 0G3B-0648-04 | 03-DEC-04 | SH DB |



| LEAD FREE | LEAD | NO. OF POSN | ASSEMBLY |
|---------------|------|-------------|----------|
| 38.10 [1.500] | 15 | 4-644575-5 | |
| 35.56 [1.400] | 14 | 4-644575-4 | |
| 33.02 [1.300] | 13 | 4-644575-3 | |
| 30.48 [1.200] | 12 | 4-644575-2 | |
| 27.94 [1.100] | 11 | 4-644575-1 | |
| 25.40 [1.000] | 10 | 4-644575-0 | |
| 22.86 [.900] | 9 | 3-644575-9 | |
| 20.32 [.800] | 8 | 3-644575-8 | |
| 17.78 [.700] | 7 | 3-644575-7 | |
| 15.24 [.600] | 6 | 3-644575-6 | |
| 12.70 [.500] | 5 | 3-644575-5 | |
| 10.16 [.400] | 4 | 3-644575-4 | |
| 7.62 [.300] | 3 | 3-644575-3 | |
| 5.08 [.200] | 2 | 3-644575-2 | |

| CONTAINS LEAD | NO. OF POSN | ASSEMBLY |
|---------------|-------------|------------|
| 38.10 [1.500] | 15 | 1-644575-5 |
| 35.56 [1.400] | 14 | 1-644575-4 |
| 33.02 [1.300] | 13 | 1-644575-3 |
| 30.48 [1.200] | 12 | 1-644575-2 |
| 27.94 [1.100] | 11 | 1-644575-1 |
| 25.40 [1.000] | 10 | 1-644575-0 |
| 22.86 [.900] | 9 | 644575-9 |
| 20.32 [.800] | 8 | 644575-8 |
| 17.78 [.700] | 7 | 644575-7 |
| 15.24 [.600] | 6 | 644575-6 |
| 12.70 [.500] | 5 | 644575-5 |
| 10.16 [.400] | 4 | 644575-4 |
| 7.62 [.300] | 3 | 644575-3 |
| 5.08 [.200] | 2 | 644575-2 |

△ MATERIAL: CONNECTOR-NYLON UL94V-0 (BLACK).
 CONTACTS-0.30 [.012] THICK COPPER ALLOY
 (BRIGHT TIN-LEAD 0.00203 [.000080] MIN THICK FOR CONTACTS
 644575-2 THRU 1-644575-5)
 (BRIGHT TIN PLATE 0.00203 [.000080] MIN THICK OVER 0.00076
 [.000030] MIN THICK NICKEL FOR CONTACTS 3-644575-2 THRU
 4-644575-5)

2. CONTACTS ACCEPT 22 AWG WIRE WITH 1.52 [.060] MAX INSULATION DIAMETER.

3. CONTACTS MUST ACCEPT 0.64±0.03 [.025±.001] SQUARE POST AND REMAIN LOCKED IN POSITION.

△ IDENTIFICATION NUMBER FOR LAST CIRCUIT MAY NOT APPEAR ON ALL ASSEMBLIES.

5. DIMENSIONS IN BRACKETS ARE IN INCHES.

6. HOUSING FEATURES ARE: FEED THRU WITH LOCKING RAMP.



THIS DRAWING IS A CONTROLLED DOCUMENT.

| | | | |
|-------------------------|--|--|---|
| DIMENSIONS: mm [INCHES] | TOLERANCES UNLESS OTHERWISE SPECIFIED: 0 PLC ± 1 PLC ± 2 PLC ± 0.13 [0.005] 3 PLC ± 4 PLC ± ANGLES ± FINISH ± | DWN S. HOOVER 03-DEC-2004 CHK D. BOSSI 03-DEC-2004 APVD D. BOSSI 03-DEC-2004 | Tyco Electronics Tyco Electronics Corporation Harrisburg, Pa 17105-3608 NAME: MTA .100 CONNECTOR ASSEMBLY 22 AWG, UL94V-0, SPECIAL APPLICATION SPEC: 108-1050 114-1019 WEIGHT: A2 00779 DRAWING NO: G=644575 RESTRICTED TO: |
|-------------------------|--|--|---|

CUSTOMER DRAWING SCALE 5:1 SHEET 1 OF 1 REV A