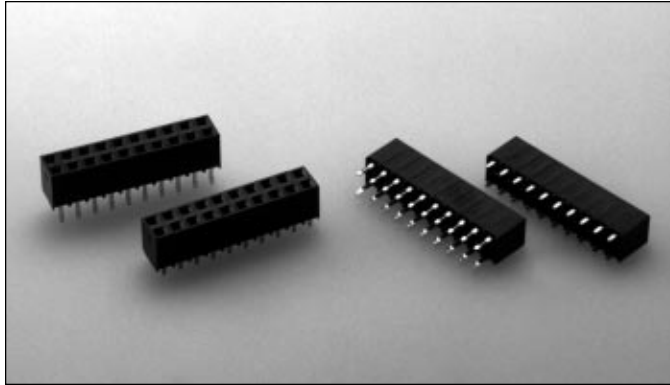


.100" (2.54mm) Low Profile Vertical Through Hole Dual Row Connectors (.100" x .150" Tails)



9000 SERIES "POST/BOXE"

PART NUMBER LEGEND

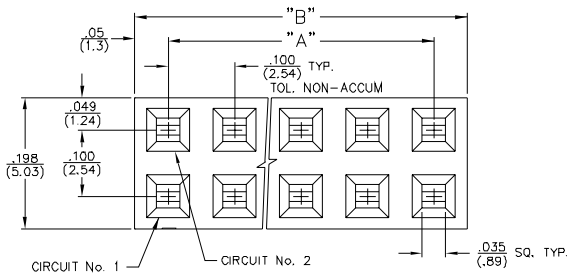
900X-4XX-30X

- TAIL CONFIGURATION** 1 = .12 (3.05)
5 = .05 (1.37)
- NUMBER OF POSITIONS PER ROW** 2-40
- CONTACT FINISH** 0 = TIN
8 = .000030 SELECTIVE GOLD
F = .000015 SELECTIVE GOLD

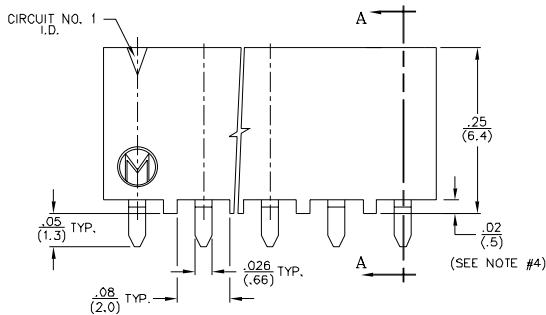
MATING HEADERS: 9100 SERIES

NOTES:

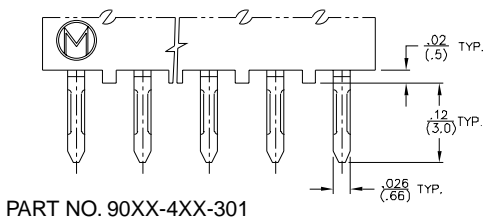
- 1) INSULATOR MATERIAL:
900X: POLYESTER (PCT), 30% GLASS FILLED, UL 94V-0; COLOR: BLACK.
- 2) CONTACT MATERIAL: PHOSPHOR BRONZE.
- 3) CONTACT FINISH:
90XQ: BRITE TIN PLATE
90XB: .000050 NICKEL PLATE ALL OVER; .000030 SEL. GOLD PLATING AS INDICATED; .0001-.0002 90/10 TIN/LEAD PLATING ON SOLDER TAIL
90XE: .000050 NICKEL PLATE ALL OVER; .000015 SEL. GOLD PLATING AS INDICATED; .0001-.0002 90/10 TIN/LEAD PLATING ON SOLDER TAIL
90XE-4XX-30J ONLY: (POST-SHEAR PLATING) .000050 NICKEL PLATE ALL OVER; .000030 SEL. GOLD PLATING AS INDICATED; .0001-.0002 90/10 TIN/LEAD PLATING ON SOLDER TAIL
90XR-4XX-30J ONLY: (POST-SHEAR PLATING) .000050 NICKEL PLATE ALL OVER; .000015 SEL. GOLD PLATING AS INDICATED; .0001-.0002 90/10 TIN/LEAD PLATING ON SOLDER TAIL
- 4) END STANDOFFS ARE PRESENT ON P/N 90XX-402-30X ONLY. P/N 90XX-403-30X THRU 90XX-440-30X WILL NOT HAVE END STANDOFFS.
- 5) DIMENSIONS ARE IN IN./ (MM)



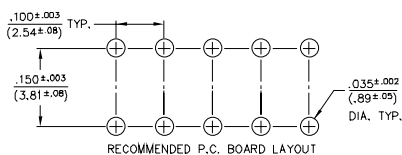
CIRCUIT No. 1 CIRCUIT No. 2 .035 (.89) SQ. TYP.



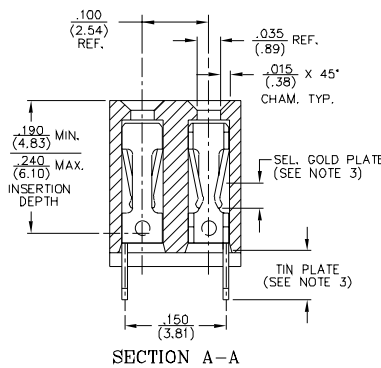
PART NO. 90XX-4XX-305



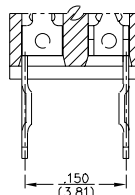
PART NO. 90XX-4XX-301



RECOMMENDED P.C. BOARD LAYOUT



SECTION A-A



ADDITIONAL SPECIFICATIONS

PART NO.	No. OF CIRCUITS	"DIM. A"	"DIM. B"
90XX-402-30X	4	.100 (2.54)	.20 (5.1)
-403-	6	.200 (5.08)	.30 (7.6)
-404-	8	.300 (7.62)	.40 (10.2)
-405-	10	.400 (10.16)	.50 (12.7)
-406-	12	.500 (12.70)	.60 (15.2)
-407-	14	.600 (15.24)	.70 (17.8)
-408-	16	.700 (17.78)	.80 (20.3)
-409-	18	.800 (20.32)	.90 (22.9)
-410-	20	.900 (22.86)	1.00 (25.4)
-411-	22	1.000 (25.40)	1.10 (27.9)
-412-	24	1.100 (27.94)	1.20 (30.5)
-413-	26	1.200 (30.48)	1.30 (33.0)
-414-	28	1.300 (33.02)	1.40 (35.6)
-415-	30	1.400 (35.56)	1.50 (38.1)
-416-	32	1.500 (38.10)	1.60 (40.6)
-417-	34	1.600 (40.64)	1.70 (43.2)
-418-	36	1.700 (43.18)	1.80 (45.7)
-419-	38	1.800 (45.72)	1.90 (48.3)
-420-	40	1.900 (48.26)	2.00 (50.8)
-421-	42	2.000 (50.80)	2.10 (53.3)
-422-	44	2.100 (53.34)	2.20 (55.9)
-423-	46	2.200 (55.88)	2.30 (58.4)
-424-	48	2.300 (58.42)	2.40 (61.0)
-425-	50	2.400 (60.96)	2.50 (63.5)
-426-	52	2.500 (63.50)	2.60 (66.0)
-427-	54	2.600 (66.04)	2.70 (68.6)
-428-	56	2.700 (68.58)	2.80 (71.1)
-429-	58	2.800 (71.12)	2.90 (73.7)
-430-	60	2.900 (73.66)	3.00 (76.2)
-431-	62	3.000 (76.20)	3.10 (78.7)
-432-	64	3.100 (78.74)	3.20 (81.3)
-433-	66	3.200 (81.28)	3.30 (83.8)
-434-	68	3.300 (83.82)	3.40 (86.4)
-435-	70	3.400 (86.36)	3.50 (88.9)
-436-	72	3.500 (88.90)	3.60 (91.4)
-437-	74	3.600 (91.44)	3.70 (93.9)
-438-	76	3.700 (93.98)	3.80 (96.5)
-439-	78	3.800 (96.52)	3.90 (99.1)
90XX-440-30X	80	3.900 (99.06)	4.00 (101.6)