

MPT • CPT F5 • PSD

Application	MPT	CPT F5	PSD	V <sub>CEO</sub> (V) ※V <sub>CEs</sub> ※*V <sub>CEr</sub>	I <sub>c</sub> (A)	I <sub>c</sub> Max. (A)	P <sub>c</sub> (W)		h <sub>FE</sub>	Available h <sub>FE</sub> Ranking code	V <sub>CE</sub> (V)	I <sub>c</sub> (mA)	Circuit
							MPT (T <sub>a</sub> =25°C)	CPT PSD (T <sub>c</sub> =25°C)					
Driver	2SB1132	-	-	-32	-1	-	2*	-	82~390	P Q R	-3	-100	-
	2SA1900	-	-	-50	-1	-2	2*	-	82~390	P Q R	-3	-500	-
	-	2SB1184	-	-50	-3	-	-	15	82~390	P Q R	-3	-500	-
	2SB1188	2SB1182	-	-32	-2	-	2*	10	82~390	P Q R	-3	-500	-
	2SB1189	-	-	-80	-0.7	-	2*	-	82~390	P Q R	-3	-100	-
	2SB1260	2SB1181	-	-80	-1	-	2*	10	82~390	P Q R	-3	-100	-
	-	2SB1275	-	-160	-1.5	-	-	10	56~270	N P Q	-5	-100	-
	-	2SB1516	-	-80	-3	-	-	10	56~270	N P Q	-2	-400	-
	-	2SB1535	-	-100	-6	-	-	10	56~270	N P Q	-1	-550	-
	2SC4132	-	-	120	2	-	2*	-	56~390	N P Q R	5	100	-
	2SD1664	-	-	32	1	-	2*	-	82~390	P Q R	3	100	-
	2SC5053	-	-	50	1	2	2*	-	82~390	P Q R	3	500	-
	-	2SD1760	-	50	3	-	-	15	82~390	P Q R	3	500	-
	2SD1766	2SD1758	-	32	2	-	2*	10	82~390	P Q R	3	500	-
	2SD1767	-	-	80	0.7	-	2*	-	82~390	P Q R	3	100	-
	2SD1898	2SD1733	-	80	1	-	2*	10	82~390	P Q R	3	500	-
	2SD2211	2SD1918	-	160	1.5	-	2*	10	56~270	N P Q	5	100	-
	2SD2167	-	-	31±4	2	3	2*	-	56~270	N P Q	3	500	-
Low V <sub>CE(sat)</sub>	2SA1797	-	-	-50	-2	-5	2*	-	82~270	P Q	-2	-500	-
	-	-	☆2SA1870	-60	-12	-	-	35	60~320	D E F	-2	-2000	-
	2SB1424	-	-	-20	-3	-5	2*	-	82~390	P Q R	-2	-100	-
	<b>New</b> 2SB1561	-	-	-60	-2	-5	2*	-	82~270	P Q	-2	-500	-
	-	2SA1952	-	-60	-5	-10	-	10	82~270	P Q	-2	-1000	-
	2SC4672	-	-	50	2	5	2*	-	82~270	P Q	2	500	-
	-	-	☆2SC4939	60	12	-	-	35	60~320	D E F	2	2000	-
	-	2SC5103	-	60	5	10	-	10	82~270	P Q	2	1000	-
	2SD2150	-	-	20	3	5	2*	-	120~560	Q R S	2	100	-
	<b>New</b> 2SD2391	-	-	60	2	5	2*	-	82~270	P Q	2	500	-
Strobe Flash Low V <sub>CE(sat)</sub>	-	<b>New</b> 2SA1834	-	-20	-10	-15	-	10	120~560	Q R S	-2	-500	-
	2SB1308	-	-	-20	-3	-5	2*	-	82~390	P Q R	-2	-500	-
	2SB1386	2SB1412	-	-20	-5	-10	2*	10	82~390	P Q R	-2	-500	-
	-	2SC5001	-	20	10	15	-	10	120~560	Q R S	2	500	-
	2SD1963	-	-	20	3	5	2*	-	120~560	Q R S	2	500	-
	2SD2098	2SD2118	-	20	5	10	2*	10	120~560	Q R S	2	500	-
High h <sub>FE</sub>	2SB1427	-	-	-20	-2	-3	2*	-	270~820	S E	-6	-500	-
	2SD2153	-	-	25	2	3	2*	-	390~2700	E U V W	6	500	-
Darlington	-	2SD2318	-	60	3	4.5	-	15	390~1800	E U V	4	500	-
	-	2SB1183	-	-40**	-2	-	-	10	1k~200k	-	-3	-500	Fig.1
	-	2SB1316	-	-100	-2	-	-	10	1k~10k	-	-2	-1000	Fig.3
	-	2SB1474	-	-80	-4	-	-	10	1k~10k	-	-3	-2000	Fig.2
	-	2SD1759	-	40**	2	-	-	10	1k~200k	-	3	500	Fig.5
	2SD1834	-	-	60**	1	-	2*	-	2k~	-	3	500	Fig.4
	2SD2195	2SD1980	-	100	2	-	2*	10	1k~10k	-	2	1000	Fig.6
	2SD2170	-	-	90 <sup>+20</sup> <sub>-10</sub>	2	3	2*	-	1k~10k	-	2	1000	Fig.7
2SD2212	2SD2143	-	60±10	2	-	2*	10	1k~10k	-	2	1000	Fig.7	
High Voltage SW	2SA1759	-	-	-400	-0.1	-0.2	2*	-	56~270	N P Q	-10	-10	-
	2SA1812	2SA1727	-	-400	-0.5	-1	2*	10	56~270	N P Q	-5	-50	-
	-	2SA1862	-	-400	-2	-4	-	10	56~180	N P	-5	-100	-
	-	2SA1807	-	-600	-1	-2	-	10	56~180	N P	-5	-100	-
	2SC4505	-	-	400	0.1	-	2*	-	56~270	N P Q	10	10	-
	-	☆2SC5161	-	400	2	4	-	10	16~50	A B	5	100	-
	-	-	2SC4937	400	2	-	-	35	16~50	A B	5	100	-
	-	-	2SC4938	400	5	-	-	35	16~50	A B	5	3000	-
	-	-	☆2SC5115	500	5	10	-	35	10~50	-	5	2000	-
	-	-	☆2SC5119	550	4	8	-	35	10~50	-	5	2500	-
-	☆2SC5162	-	600	1	2	-	10	56~180	N P	5	100	-	

Notes : 1. ☆Under development 2. F5 denotes surface mount version of CPT (SC-64) 3. ★Package mounted on ceramic 40×40×0.7mm

Darlington transistor Internal circuit

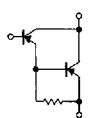


Fig.1

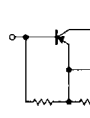


Fig.2

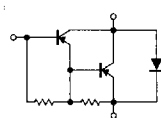


Fig.3

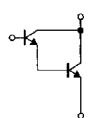


Fig.4

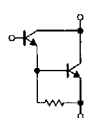


Fig.5

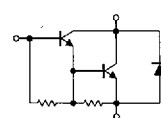


Fig.6

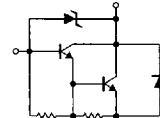


Fig.7

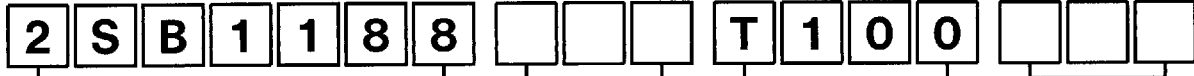
7828999 0009568 816

# Transistors

MPT • CPT F5 • PSD

## ●Product Designation

- When ordering, specify the type.
- Check each code against the tables shown below.
- Fill a space with the next character.



Part No.

Special code

- Omit for standard product.
- Factory assigned for custom product.

**h<sub>FE</sub> Ranking code**

Input h<sub>FE</sub> rank signal display

One rank preferred  P

Multiple rank preferred  P  R

(Min., Max. is displayed)

Code	h <sub>FE</sub> Range
L	27~56
M	39~82
N	56~120
P	82~180
Q	120~270
R	180~390
S	270~560
E	390~820
U	560~1200
V	820~1800
W	1200~2700
Darlington : As indicated	

## ●Packaging

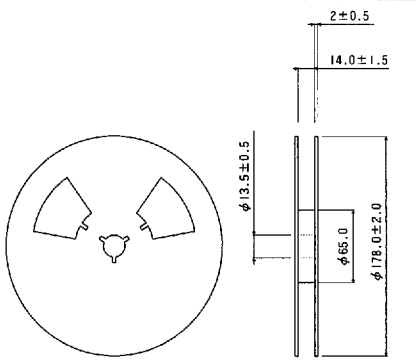
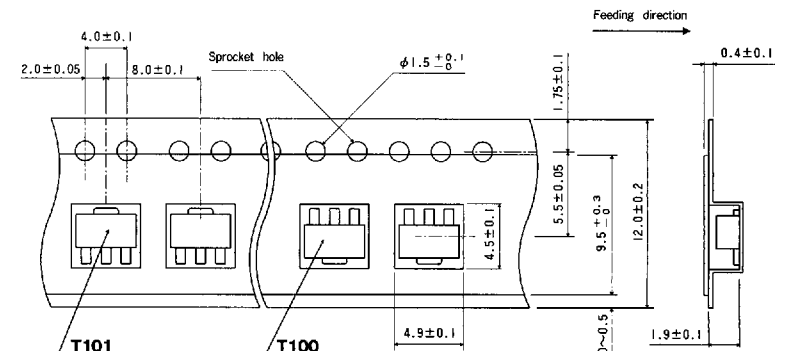
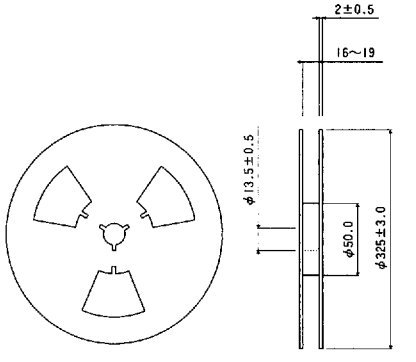
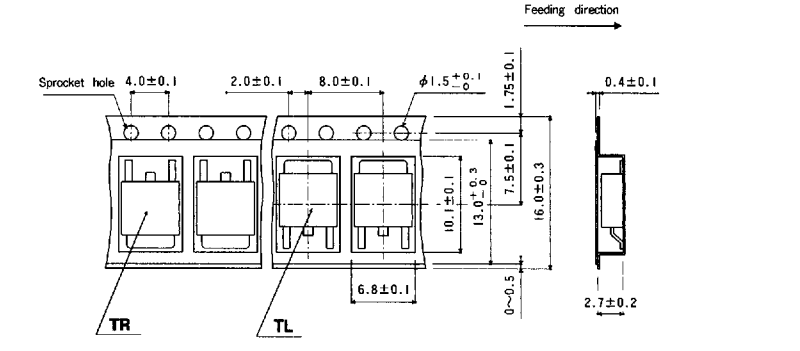
Package	Code	Packaging type	Packaging style	Direction	Quantity /Package (pcs)	Quantity /Unit (pcs)
MPT	T100	Taping	Embossed reel tape	3 Pins side on sprocket hole side	1,000	-
	T101			Fin on sprocket hole side		
CPT F5	TL	Taping	Embossed reel tape	Fin on sprocket hole side	2,500	-
	TR			3 Pins side on sprocket hole side		
	F5	Bulk	Polyethylene bag	-	2,000	200
PSD	TL	Taping	Embossed reel tape	Fin on sprocket hole side	1,000	-
	TR			3 Pins side on sprocket hole side		
	None	Bulk	Polyethylene bag	-	500	100

(Unit : mm)

Package	MPT (SOT-89)	CPT F5	PSD
Dimensions	<p>(1) Base (2) Collector (3) Emitter</p>	<p>(1) Base (2) Collector (3) Emitter</p>	<p>(1) Base (2) Collector (3) Emitter</p>
Actual size			
External dimensions (×1.0)			

●Packaging Specifications

(Unit : mm)

Reel	Tape
<p><b>MPT (SOT-89)</b></p> 	
<p><b>CPT F5 (D PAK)</b></p> 	
<p><b>PSD (D<sup>2</sup> PAK)</b></p> 