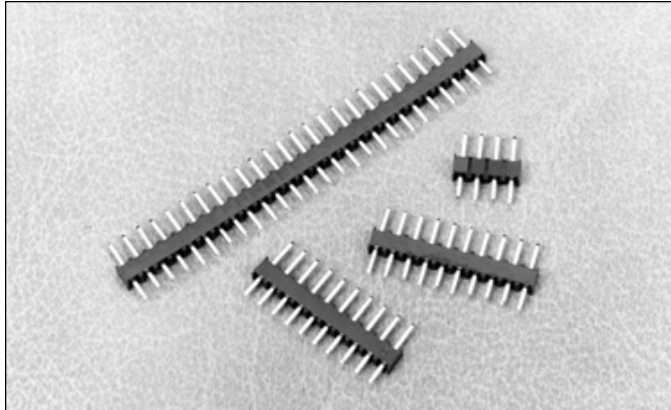
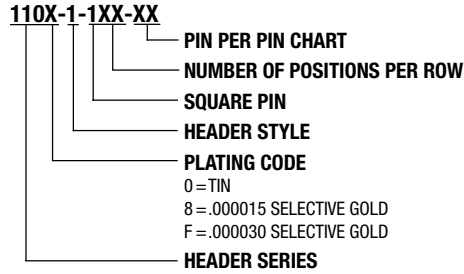


.100" (2.54mm) Single Row Through Hole, Vertical Headers

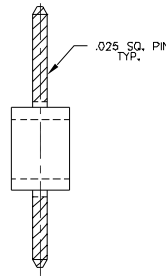
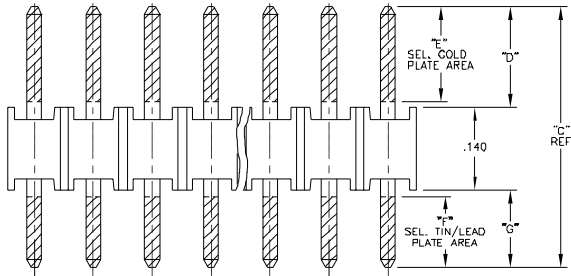
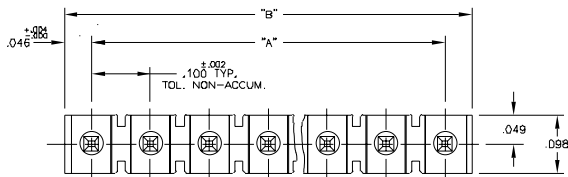


1100 SERIES "TERMACON"

PART NUMBER LEGEND

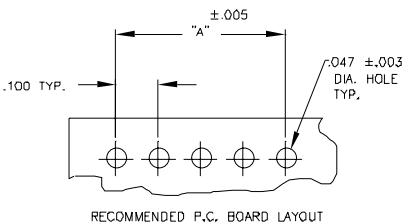


MATING CONNECTORS: 1000 SERIES & 1300 SERIES CRIMP OR IDC STYLE CONNECTORS



NOTES

- MATERIAL:
 - INSULATOR: 1100-1-1XX-XX: NYLON 6/6, UL 94V-0 COLOR: RED
 - PINS: PHOSPHOR BRONZE
- PIN FINISH:
 - 11X0-1-1XX-XX - BRUTE TIN OVER NICKEL PLATE.
 - 11X2-1-1XX-XX - .000015 (.0003B) GOLD OVER NICKEL PLATE.
 - 11XZ-1-1XX-XX - .000030 (.0007B) GOLD OVER NICKEL PLATE.
 - 11XB-1-1XX-XX - .000015 (.0003B) SEL. GOLD OVER NICKEL PLATE.
 - SEL. TIN/LEAD PLATE ON SOLDER TAIL.
 - 11XE-1-1XX-XX - .000030 (.0007B) SEL. GOLD OVER NICKEL PLATE, SEL. TIN/LEAD PLATE ON SOLDER TAIL.



PART NUMBER	NO. OF POS.	DIM "A"	DIM "B"
11XX-1-102-XX	2	.100	.190
-103	3	.200	.290
-104	4	.300	.390
-105	5	.400	.490
-106	6	.500	.590
-107	7	.600	.690
-108	8	.700	.790
-109	9	.800	.890
-110	10	.900	.990
-111	11	1.000	1.090
-112	12	1.100	1.190
-113	13	1.200	1.290
-114	14	1.300	1.390
-115	15	1.400	1.490
-116	16	1.500	1.590
-117	17	1.600	1.690
-118	18	1.700	1.790
-119	19	1.800	1.890
-120	20	1.900	1.990
-121	21	2.000	2.090
-122	22	2.100	2.190
-123	23	2.200	2.290
-124	24	2.300	2.390
-125	25	2.400	2.490
-126	26	2.500	2.590
-127	27	2.600	2.690
11XX-1-128-XX	28	2.700	2.790

PART NUMBER	DIM "C"	DIM "D"	DIM "E"	DIM "F"	DIM "G"
11XX-1-1XX-01	1.118	1.230	1.426	1.520	1.630
-02	1.26	1.29	1.20	1.12	1.13
-03	1.20	1.41	1.20	1.12	1.13
-04	1.24	1.40	1.20	1.12	1.13
-05	1.40	1.41	1.20	1.12	1.13
-06	1.48	1.41	1.20	1.12	1.13
-07	1.48	1.41	1.20	1.12	1.13
-08	1.10	1.41	1.20	1.12	1.13
-09	1.10	1.41	1.20	1.12	1.13
-10	1.40	1.41	1.20	1.12	1.13
-11	1.48	1.41	1.20	1.12	1.13
-12	1.48	1.41	1.20	1.12	1.13
-13	1.18	1.41	1.20	1.12	1.13
-14	1.18	1.41	1.20	1.12	1.13
-15	1.40	1.41	1.20	1.12	1.13
-16	1.48	1.41	1.20	1.12	1.13
-17	1.48	1.41	1.20	1.12	1.13
-18	1.40	1.41	1.20	1.12	1.13
-19	1.48	1.41	1.20	1.12	1.13
-20	1.48	1.41	1.20	1.12	1.13
-21	1.48	1.41	1.20	1.12	1.13
11XX-1-1XX-22	1.187	1.433	1.433	1.433	1.433

PART NUMBER	DIM "C"	DIM "D"	DIM "E"	DIM "F"	DIM "G"
11XX-1-1XX-25	1.25	1.433	1.433	1.433	1.433
-24	1.25	1.433	1.433	1.433	1.433
-25	1.00	1.433	1.433	1.433	1.433
-26	1.25	1.433	1.433	1.433	1.433
-27	1.25	1.433	1.433	1.433	1.433
-28	1.25	1.433	1.433	1.433	1.433
-29	1.25	1.433	1.433	1.433	1.433
-30	1.14	1.433	1.433	1.433	1.433
-31	1.25	1.433	1.433	1.433	1.433
-32	1.25	1.433	1.433	1.433	1.433
-33	1.25	1.433	1.433	1.433	1.433
-34	1.25	1.433	1.433	1.433	1.433
-35	1.25	1.433	1.433	1.433	1.433
-36	1.25	1.433	1.433	1.433	1.433
-37	1.25	1.433	1.433	1.433	1.433
-38	1.25	1.433	1.433	1.433	1.433
-39	1.25	1.433	1.433	1.433	1.433
-40	1.25	1.433	1.433	1.433	1.433
-41	1.25	1.433	1.433	1.433	1.433
-42	1.25	1.433	1.433	1.433	1.433
-43	1.25	1.433	1.433	1.433	1.433
-44	1.25	1.433	1.433	1.433	1.433
-45	1.25	1.433	1.433	1.433	1.433
-46	1.25	1.433	1.433	1.433	1.433
11XX-1-1XX-47	1.15	1.433	1.433	1.433	1.433