

M SERIES RIGHT ANGLE SHROUDED HEADER

Features

.028 [0.71] round solder tail
with selective gold plating
Conforms to
MIL-C-83503/24A

Specifications Environmental

Temperature Range:
-55°C to +120°C

Mechanical

Insulator Material:
Glass filled polyester, gray,
UL94V-0

Contact Material:
Phosphor Bronze

Contact Plating:

Standard

Contact Area: 30μ IN gold

Tail Area: 150μ IN tin/lead

Optional

Contact Area: 15μ IN gold

Tail Area: 150μ IN tin/lead

Electrical

Current Rating:

1 AMP

Dielectric Withstanding

Voltage:

500 Vrms

Insulation Resistance:

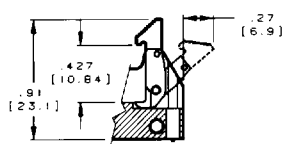
> 1000 Megohms

Mating CA Product:

IDS2, FID and IDS

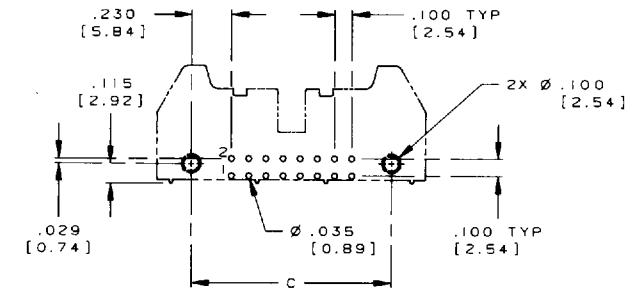
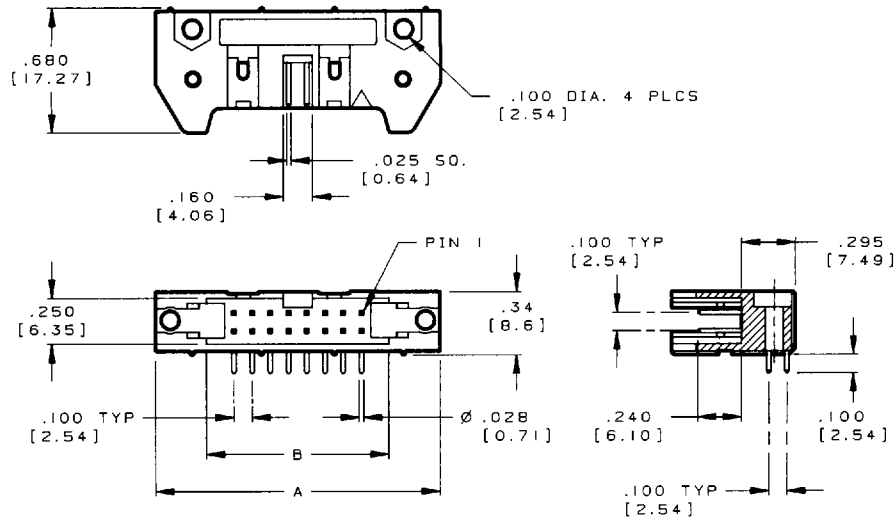
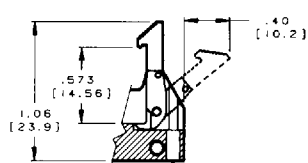
Short Latch Ejector

for use with IDS2 and FID
without strain relief



Long Latch Ejector

for use with IDS2, FID and
IDS with strain relief



POLARIZING KEY
CA-HK

No. of Positions	Dimensions			Plating	Part Numbers		
	A	B	C		no latch	short latch	long latch
* 10	1.26 [32.0]	.700 [17.78]	1.100 [27.94]	30μ IN sel gold	CA-10HRM-1F	CA-10HRM-1F-S	CA-10HRM-1F-SR
				15μ IN sel gold	CA-10HRM-1C	CA-10HRM-1C-S	CA-10HRM-1C-SR
10	1.26 [32.0]	.700 [17.78]	1.100 [27.94]	30μ IN sel gold	CA-10HRM-1F-SPT	CA-10HRM-1F-SPT-S	CA-10HRM-1F-SPT-SR
				15μ IN sel gold	CA-10HRM-1C-SPT	CA-10HRM-1C-SPT-S	CA-10HRM-1C-SPT-SR
14	1.46 [37.1]	.900 [22.86]	1.300 [33.02]	30μ IN sel gold	CA-14HRM-1F	CA-14HRM-1F-S	CA-14HRM-1F-SR
				15μ IN sel gold	CA-14HRM-1C	CA-14HRM-1C-S	CA-14HRM-1C-SR
16	1.56 [39.6]	1.000 [25.40]	1.400 [35.56]	30μ IN sel gold	CA-16HRM-1F	CA-16HRM-1F-S	CA-16HRM-1F-SR
				15μ IN sel gold	CA-16HRM-1C	CA-16HRM-1C-S	CA-16HRM-1C-SR
20	1.76 [44.7]	1.200 [30.48]	1.600 [40.64]	30μ IN sel gold	CA-20HRM-1F	CA-20HRM-1F-S	CA-20HRM-1F-SR
				15μ IN sel gold	CA-20HRM-1C	CA-20HRM-1C-S	CA-20HRM-1C-SR
26	2.06 [52.3]	1.500 [38.10]	1.900 [48.26]	30μ IN sel gold	CA-26HRM-1F	CA-26HRM-1F-S	CA-26HRM-1F-SR
				15μ IN sel gold	CA-26HRM-1C	CA-26HRM-1C-S	CA-26HRM-1C-SR
34	2.46 [62.5]	1.900 [48.26]	2.300 [58.42]	30μ IN sel gold	CA-34HRM-1F	CA-34HRM-1F-S	CA-34HRM-1F-SR
				15μ IN sel gold	CA-34HRM-1C	CA-34HRM-1C-S	CA-34HRM-1C-SR
40	2.76 [70.1]	2.200 [55.88]	2.600 [66.04]	30μ IN sel gold	CA-40HRM-1F	CA-40HRM-1F-S	CA-40HRM-1F-SR
				15μ IN sel gold	CA-40HRM-1C	CA-40HRM-1C-S	CA-40HRM-1C-SR
50	3.26 [82.8]	2.700 [68.58]	3.100 [78.74]	30μ IN sel gold	CA-50HRM-1F	CA-50HRM-1F-S	CA-50HRM-1F-SR
				15μ IN sel gold	CA-50HRM-1C	CA-50HRM-1C-S	CA-50HRM-1C-SR
60	3.76 [95.5]	3.200 [81.28]	3.600 [91.44]	30μ IN sel gold	CA-60HRM-1F	CA-60HRM-1F-S	CA-60HRM-1F-SR
				15μ IN sel gold	CA-60HRM-1C	CA-60HRM-1C-S	CA-60HRM-1C-SR

* No Polarizing Slot



E95981



LA65050