

MICRO ELECTRONICS MICRO

T-23-19

M10
SERIES
GLASS
PASSIVATED RECTIFIER

1A SURFACE MOUNT RECTIFIER

FEATURES

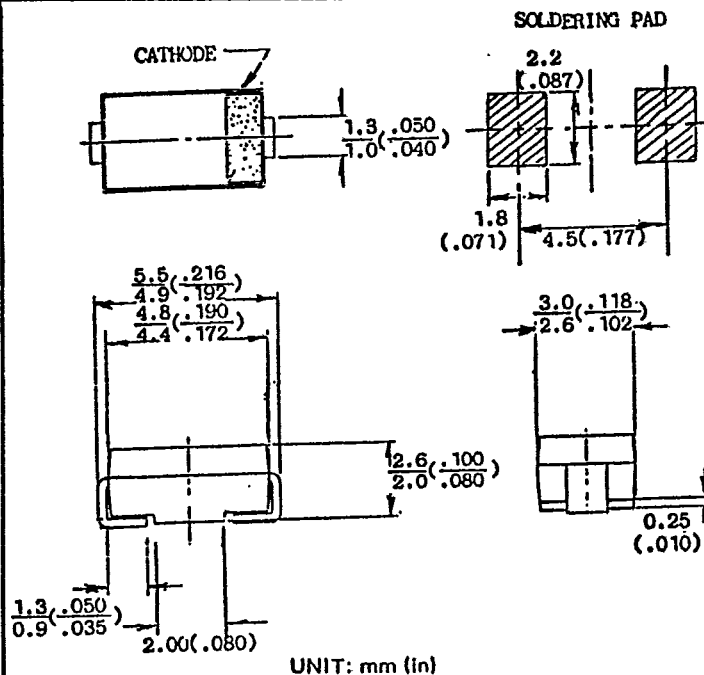
- Glass passivated junction
- Low forward voltage
- High current capability
- Low leakage current
- High surge capability
- Low cost

MECHANICAL DATA

Case: Molded plastic use UL 94V-O recognized
 Flame Retardant Epoxy
 Terminals: Flat, leads, solderable per
 MIL-STD-202, Method 208
 Polarity: Color band denotes cathode
 Mounting Position: Any

VOLTAGE RANGE
 100 to 600 Volts

CURRENT
 1.0 Ampere



MAXIMUM RATINGS AND ELECTRICAL CHARACTERISTICS

Ratings at 25°C ambient temperature unless otherwise specified.
 Single phase, half wave, 60 Hz, resistive or inductive load.
 For capacitive load, derate current by 20%.

	M11	M12	M14	M16	UNITS
Maximum Recurrent Peak Reverse Voltage	100	200	400	600	V
Maximum RMS Voltage	70	140	280	420	V
Maximum DC Blocking Voltage	100	200	400	600	V
Maximum Average Forward Rectified Current at T _A = 55°C	1.0				A
Peak Forward Surge Current 8.3 ms single half sine-wave (JEDEC method)	50				A
Maximum Forward Voltage at 1.0A Peak	1.1				V
Maximum DC Reverse Current, at Rated DC Blocking Voltage	5.0				μA
Typical Junction Capacitance (NOTE 1)	15				pF
Typical Reverse Recovery Time (NOTE 2)	2				μs
Operating and Storage Temperature Range T _A	-65 to +175				°C

NOTES

- 1 - Reverse Recovery Test Conditions: I_F = .5A, I_R = 1A, I_{rr} = .25A
- 2 - Measured at 1.0 MHz and applied reverse voltage of 4.0 Volts



MICRO ELECTRONICS LTD. 美科有限公司

38, Hung To Road, Microtron Building, Kwun Tong, Kowloon, Hong Kong.

Kwun Tong P.O. Box 69477 Hong Kong. Fax No. 341 0321 Telex: 43510 Micro Hx. Tel: 343 0181-5