



# 1.27mm (.050") Pitch MX-50™ Ribbon Cable Connector 71247 Center Polarization

## FEATURES AND SPECIFICATIONS

### Features and Benefits

- Designed to mate with industry-standard headers utilizing short latch/eject levers
- Shipped with upper housing preloaded in convenient plastic tubes for ease of termination and handling
- Chamfered pin lead-ins
- Optional strain relief
- Locking IDT section
- Various packaging options for ease of termination and handling

### Reference Information

Product Specification: PS-40312  
 Packaging: Tube and tape  
 Tooling Information: See pages B-30 to B-33  
 UL File No.: E29179  
 CSA File No.: LR19980  
 Mates With: 70246, 70247 and .025" square or round pin, mating length .220 to .310"  
 Use Molex Cable: 6800, 8863 and 40158  
 Designed In: Inches

### Electrical

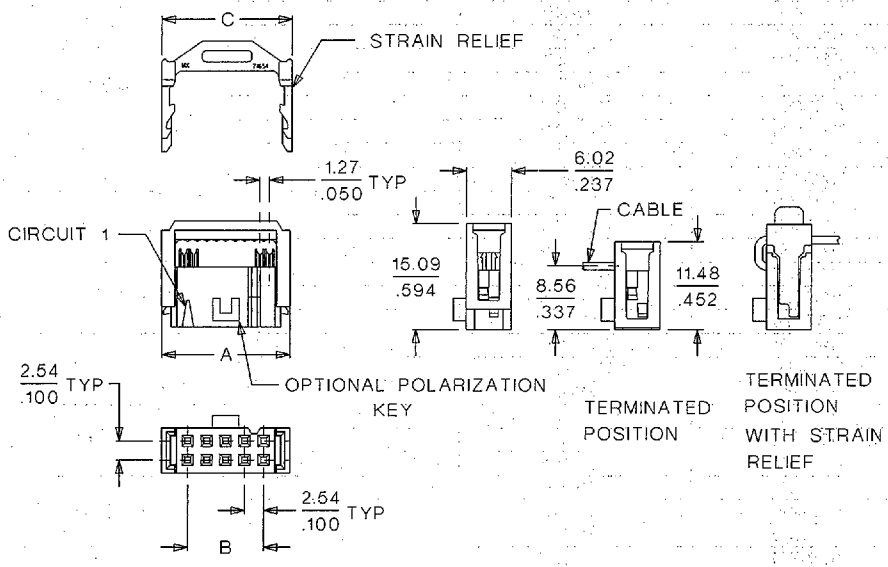
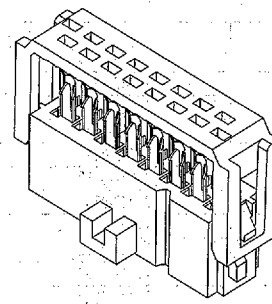
Voltage: 125V  
 Current: 1.0A  
 Contact Resistance: 30mΩ max.  
 Dielectric Withstanding Voltage: 600V rms  
 Insulation Resistance: 5000 MΩ min.

### Mechanical

Contact Insertion Force: 8 oz per circuit max.  
 Durability: 50 cycles Gold and 25 cycles Tin/Lead

### Physical

Housing: Black glass-filled polyester, UL 94V-0  
 Contact: Beryllium Copper Alloy  
 Plating: See Table  
 Temperature: -40 to +105°C  
 Cable Accommodation: 26 AWG stranded tinned and 28 AWG stranded tinned and topcoat  
 Insulation Range: 1.14mm (.045") diameter max.



Delivered on a carrier with 20 pieces per strip.  
**Actual Size** **Universal Polarizing Pin**  
 40713-1  
 Order No. 15-04-0292

**molex** 1.27mm (.050") Pitch  
**MX-50™**  
**Ribbon Cable Connector**  
**71247**  
**Center Polarization**

Circuits	Order No.		Plating No.	Dimension	
	With Strain Relief	Without Strain Relief		A	B
8	71247-1226	71247-0426	1	14.55 (.573)	7.62 (.300)
	71247-1251	71247-0451	2		
	71247-1200	71247-0400	3		
10	71247-1227	71247-0427	1	17.09 (.673)	10.16 (.400)
	71247-1252	71247-0452	2		
	71247-1201	71247-0401	3		
12	71247-1228	71247-0428	1	19.63 (.773)	12.70 (.500)
	71247-1253	71247-0453	2		
	71247-1202	71247-0402	3		
14	71247-1229	71247-0429	1	22.17 (.873)	15.24 (.600)
	71247-1254	71247-0454	2		
	71247-1203	71247-0403	3		
16	71247-1230	71247-0430	1	24.74 (.973)	17.78 (.700)
	71247-1255	71247-0455	2		
	71247-1204	71247-0404	3		
20	71247-1231	71247-0431	1	29.79 (1.173)	22.86 (.900)
	71247-1256	71247-0456	2		
	71247-1205	71247-0405	3		
22	71247-1232	71247-0432	1	32.33 (1.273)	25.40 (1.000)
	71247-1257	71247-0457	2		
	71247-1206	71247-0406	3		
24	71247-1233	71247-0433	1	34.87 (1.373)	27.94 (1.100)
	71247-1258	71247-0458	2		
	71247-1207	71247-0407	3		
26	71247-1234	71247-0434	1	37.41 (1.473)	30.48 (1.200)
	71247-1259	71247-0459	2		
	71247-1208	71247-0408	3		
28	71247-1235	71247-0435	1	39.95 (1.573)	33.02 (1.300)
	71247-1260	71247-0460	2		
	71247-1209	71247-0409	3		
30	71247-1236	71247-0436	1	42.49 (1.673)	35.56 (1.400)
	71247-1261	71247-0461	2		
	71247-1210	71247-0410	3		
34	71247-1237	71247-0437	1	47.57 (1.873)	40.64 (1.600)
	71247-1262	71247-0462	2		
	71247-1211	71247-0411	3		
36	71247-1238	71247-0438	1	50.11 (1.973)	43.18 (1.700)
	71247-1263	71247-0463	2		
	71247-1212	71247-0412	3		
40	71247-1239	71247-0439	1	55.19 (2.173)	48.26 (1.900)
	71247-1264	71247-0464	2		
	71247-1213	71247-0413	3		
44	71247-1240	71247-0440	1	60.27 (2.373)	53.34 (2.100)
	71247-1265	71247-0465	2		
	71247-1214	71247-0414	3		
50	71247-1241	71247-0441	1	67.89 (2.673)	60.96 (2.400)
	71247-1266	71247-0466	2		
	71247-1215	71247-0415	3		
60	71247-1242	71247-0442	1	80.59 (3.173)	73.66 (2.900)
	71247-1267	71247-0467	2		
	71247-1216	71247-0416	3		
62	71247-1243	71247-0443	1	83.13 (3.273)	76.20 (3.000)
	71247-1268	71247-0468	2		
	71247-1217	71247-0417	3		
64	71247-1244	71247-0444	1	85.67 (3.373)	78.74 (3.100)
	71247-1269	71247-0469	2		
	71247-1218	71247-0418	3		

Plating No. 1: 0.38µm (15µ") min. Gold in contact area, 1.91µm (75µ") min. Tin/Lead in termination area, both over 1.27µm (50µ") min. Nickel underplate

Plating No. 2: 0.76µm (30µ") min. Gold in contact area, 1.91µm (75µ") min. Tin/Lead in termination area, both over 1.27µm (50µ") min. Nickel underplate

Plating No. 3: 3.81µm (150µ") Tin/Lead over 1.27µm (50µ") Nickel underplate