

METAL SHELL RECEPTACLES AND PLUGS

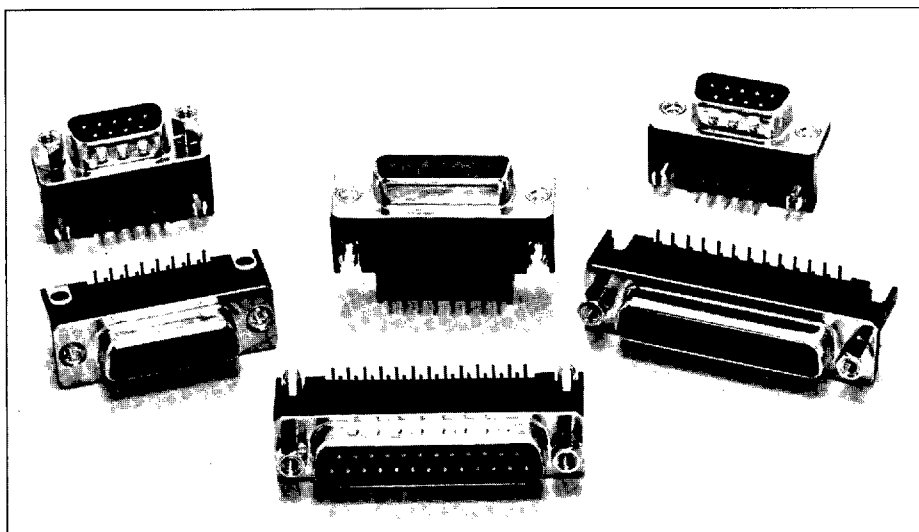
.318 & .590 RIGHT ANGLE P.C. MOUNT CONNECTORS

GENERAL DESCRIPTION

Designed specifically for use on peripherals, communications devices and mini/micro computers, Viking's .318 and .590 Metal Shell D-Subminiature plugs and receptacles offer the design engineer an outstanding combination of performance capability and design flexibility.

The decreased connector and footprint size of the .318 permits the designer to reduce board size or add components.

Metal shells and ground options reduce electromagnetic interference (E.M.I.) and radio frequency interference (R.F.I.).



PRODUCT FEATURES

DESIGN FLEXIBILITY

- Fully intermateable with any standard metal shell, crimp, solder, or IDC D-Subminiature connectors
- Generous lead-in and chamfered edges make these connectors ideal for blind mating applications
- Conform to EMI/RFI requirements of FCC Docket No. 20780
- 9, 15, 25, 37 contact configurations available in both .318 and .590 footprints

- 3 choices of selective gold plating (flash, 10 or 30 microinches)
- 3 ground styles permit best choice for specific application
- 3 mounting options available with any grounding style

COST SAVERS

- Totally reliable, yet competitively priced
- Short lead times reduce user inventory costs

RUGGED CONSTRUCTION

- Metal shell is bright nickel plated cold-rolled steel
- Insulator is high-quality, U.L. 94V-0 approved, flame-retardant thermoplastic
- U.L. listed, C.S.A. certified

ORDERING INFORMATION

DM	R	ST	25	RA	07	BG
-----------	----------	-----------	-----------	-----------	-----------	-----------

SERIES ORDER CODE: _____

DM:D-Subminiature Metal Shell Series

PART IDENTIFIER CODES: _____

P: Plug

R: Receptacle

CONTACT PLATING CODES: _____

HT: selective gold flash over nickel

ST: .000010 selective gold plating over nickel

ZT: .000030 selective gold plating over nickel

NUMBER OF

CONTACT CODES: _____

(Code number equals number of contacts.)

09, 15, 25, 37

GROUNDING STYLE CODES:

CG: Compliant Ground

TG: Top Ground

BG: Bottom Ground

MOUNTING STYLE CODES:

01: Thru Hole

05: Threaded Insert

07: Hex Standoff

RIGHT ANGLE FOOTPRINT CODES:

RA: .590 Footprint

RB: .318 Footprint

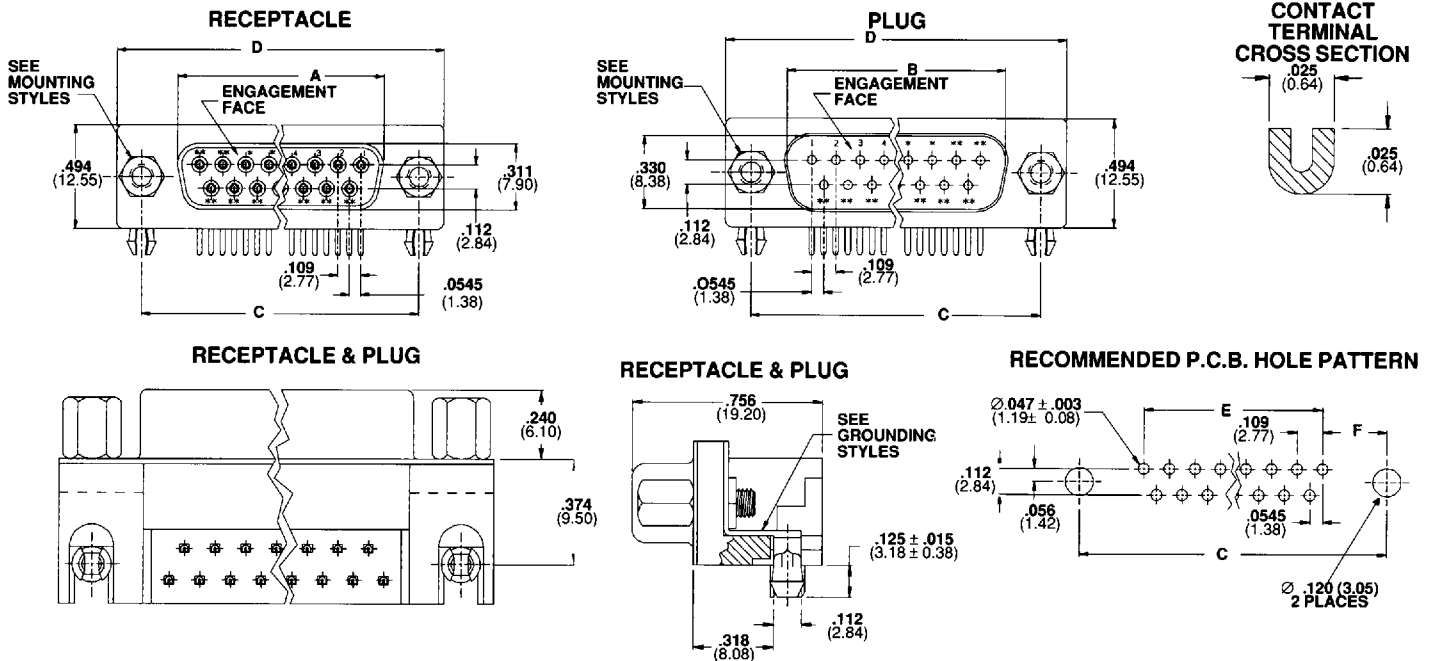
METAL SHELL RECEPTACLES AND PLUGS

.318 & .590 RIGHT ANGLE P.C. MOUNT CONNECTORS

DESIGN INFORMATION

9, 15, 25, AND 37 POSITION ASSEMBLIES

.318 RIGHT ANGLE FOOTPRINT (ORDER CODE: RB)



.590 RIGHT ANGLE FOOTPRINT (ORDER CODE: RA)

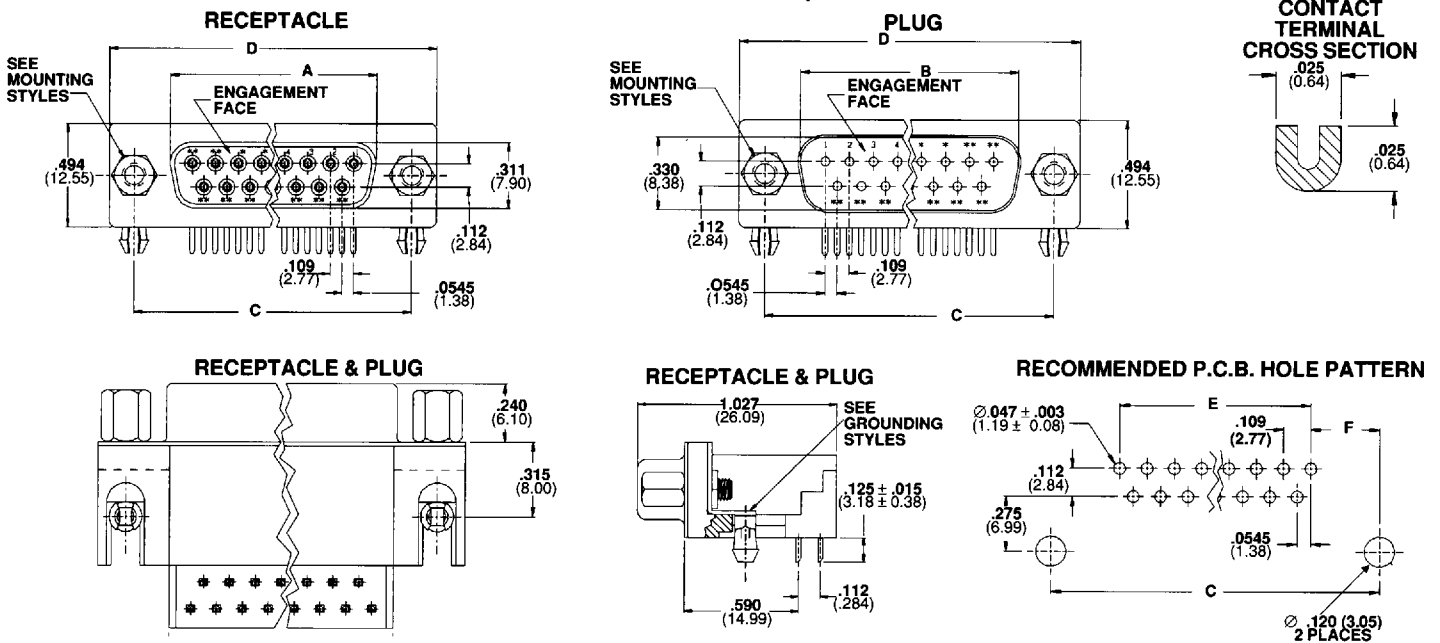


TABLE OF DIMENSIONS: Receptacles & Plugs

NO. OF POSITIONS	A ± .010 (0.25)	B ± .010 (0.25)	C ± .010 (0.25)	D ± .015 (0.38)	E ± .010 (0.25)	F ± .010 (0.25)
9	.640 (16.26)	.666 (16.92)	.984 (24.99)	1.214 (30.84)	.436 (11.07)	.274 (6.96)
15	.967 (24.56)	.994 (25.25)	1.312 (33.32)	1.545 (39.24)	.763 (19.38)	.275 (6.99)
25	1.508 (38.30)	1.534 (38.96)	1.852 (47.04)	2.088 (53.04)	1.308 (33.22)	.272 (6.91)
37	2.156 (54.76)	2.182 (55.42)	2.500 (63.50)	2.730 (69.34)	1.962 (49.83)	.269 (6.83)

NOTE: Dimensions are in inches and (millimeters). Tolerance ± .010 (.25) unless otherwise specified.

METAL SHELL RECEPTACLES AND PLUGS

.318 & .590 RIGHT ANGLE P.C. MOUNT CONNECTORS

SPECIFICATIONS

ELECTRICAL

Current Rating: 5 amps max.
Insulation Resistance:
 5000 megohms min.
Contact Resistance:
 10 milliohms max., mated
Dielectric Withstanding Voltage:
 1000 VAC

MECHANICAL

Contact Retention: 3 lbs. min.
Durability, Mating Cycles:
 Code HT: 25 cycles
 Code ST: 100 cycles
 Code ZT: 500 cycles
Ambient Temperature Range:
 -67°F to +257°F (-55° C to +125° C)

ENGAGEMENT & SEPARATION FORCES

Insertion: 10 oz. max. per contact
Withdrawal: 0.7 oz. min. per contact

MATERIALS AND FINISHES

INSULATOR:

Glass-filled thermoplastic, U.L. 94V-0
 Color, black

CONTACT: Copper Alloy

CONTACT FINISH:

Underplate:
 Nickel all over (.000050 min. thick)
Engagement Area:
 Code HT: gold flash
 Code ST: .000010 gold
 Code ZT: .000030 gold
Termination Area: .000150 min.
 thick tin-lead

CONNECTOR SHELL:

Steel, nickel plated

MOUNTING HARDWARE:

Brass with nickel plate

GROUNDING BRACKETS:

Brass, tin-lead plated

APPROVALS, CERTIFICATIONS

U.L.

All D-Subminiature connectors are listed under the component program of Underwriters Laboratories, Inc., File E 74125.

CSA

CSA Certified. Certification report available from factory. File No. LR61763.

Specifications contained herein are subject to change without notice. Consult Viking for current data.

PRODUCT OPTIONS

CONNECTOR FOOTPRINT

ORDER CODE RB: .318 Right Angle
ORDER CODE RA: .590 Right Angle

NUMBER OF CONTACTS

ORDER CODES: 09, 15, 25, 37 (Code equals number of contacts)

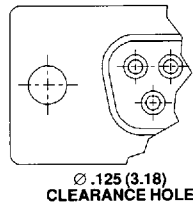
CONTACT PLATING

CODE HT: selective gold flash over nickel
CODE ST: .000010 selective gold over nickel
CODE ZT: .000030 selective gold over nickel

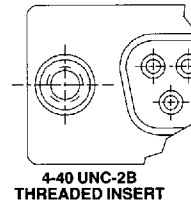
MOUNTING STYLES

Viking offers three mounting styles: Code 1, Thru Hole; Code 5, 4-40 UNC-2B threaded insert; Code 9, 4-40 UNC-2B Round Stand-off. Key performance characteristics include 15 lbs. minimum axial force and torque retention of 6 inch-pounds.

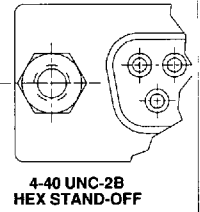
THRU HOLE
ORDER CODE:
 01



THREADED INSERT
ORDER CODE:
 05



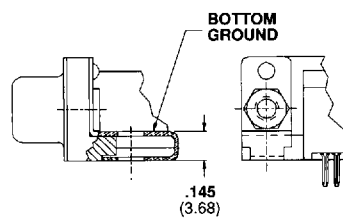
HEX STAND-OFF
ORDER CODE:
 07



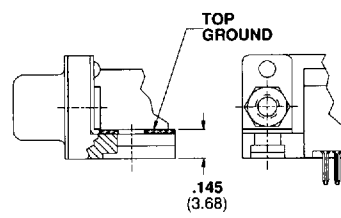
GROUNDING STYLES

Viking offers metal shells for EMI/RFI shielding with several methods of grounding to the P.C. board for electrical ground path continuity. These grounding options are available with all of Viking's mounting styles.

ORDER CODE:
 BG



ORDER CODE:
 TG



ORDER CODE:
 CG

