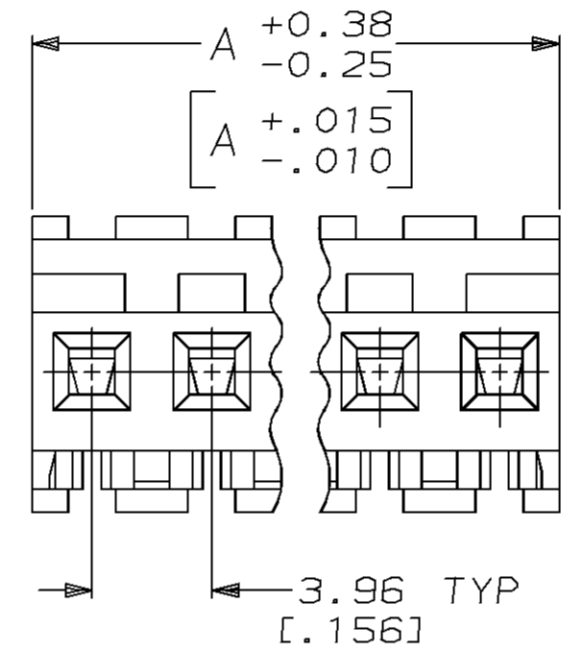
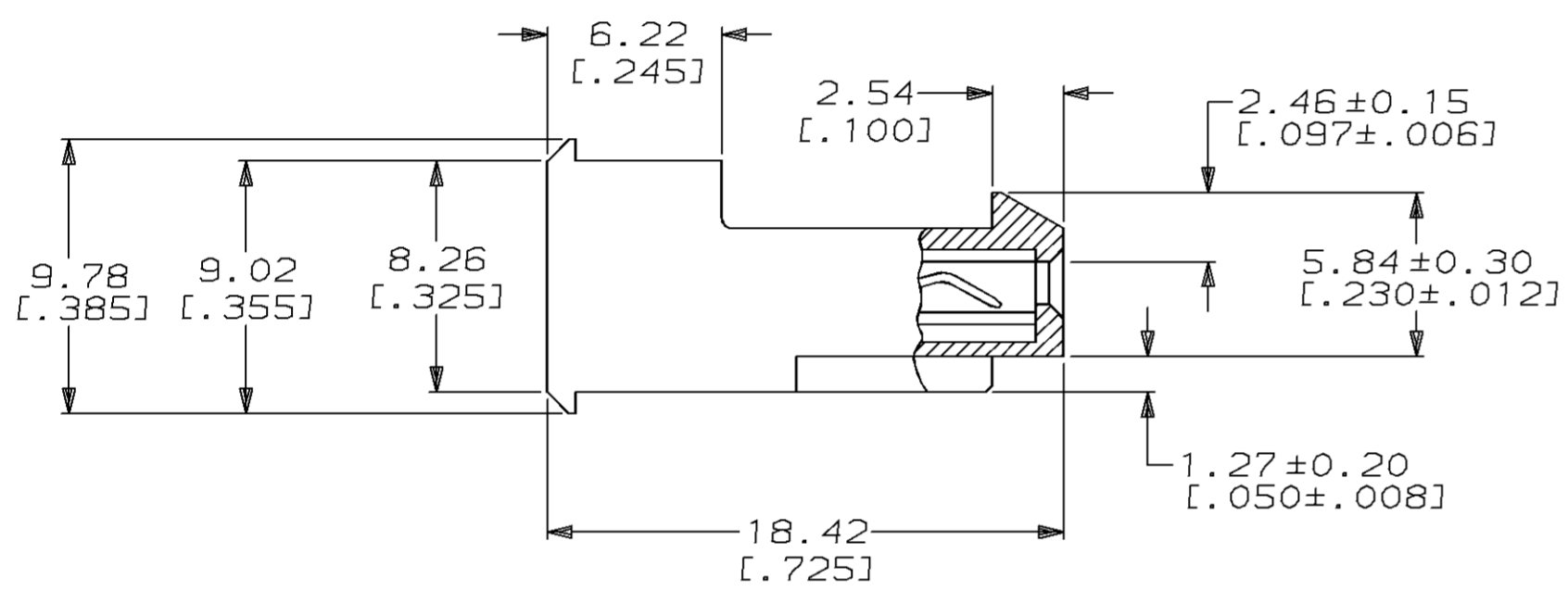
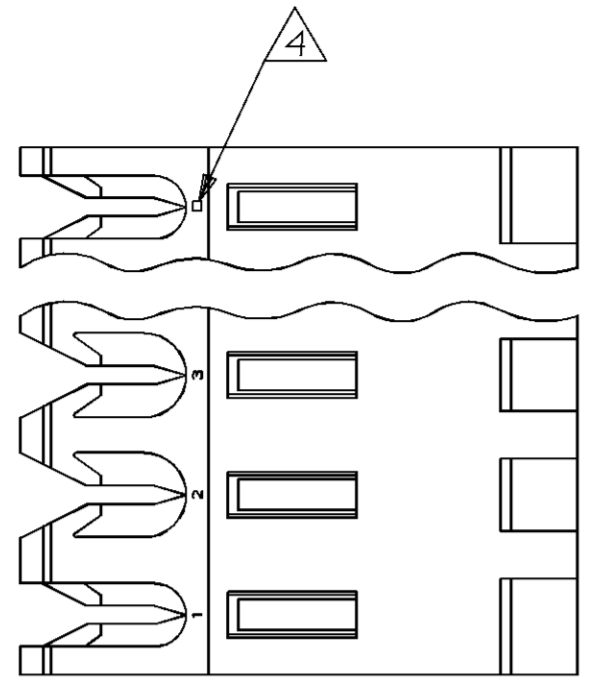


THIS DRAWING IS UNPUBLISHED. RELEASED FOR PUBLICATION, 19 .  
 © COPYRIGHT 19 BY AMP INCORPORATED. ALL INTERNATIONAL RIGHTS RESERVED.

LOC	DIST	P	F	ZONE	LTR	REVISIONS	DATE	APPD
CM	54				H	REACT -2 THRU -24 AND REV PER EC 0730-0242-95	3-11-96	BL RS



DIM A	NO OF CIRCUITS	PART NO
95.10 [3.744]	24	2-641171-4
91.14 [3.588]	23	2-641171-3
87.17 [3.432]	22	2-641171-2
83.21 [3.276]	21	2-641171-1
79.25 [3.120]	20	2-641171-0
75.29 [2.964]	19	1-641171-9
71.32 [2.808]	18	1-641171-8
67.36 [2.652]	17	1-641171-7
63.40 [2.496]	16	1-641171-6
59.44 [2.340]	15	1-641171-5
55.47 [2.184]	14	1-641171-4
51.51 [2.028]	13	1-641171-3
47.55 [1.872]	12	1-641171-2
43.59 [1.716]	11	1-641171-1
39.62 [1.560]	10	1-641171-0
35.66 [1.404]	9	641171-9
31.70 [1.248]	8	641171-8
27.74 [1.092]	7	641171-7
23.77 [.936]	6	641171-6
19.81 [.780]	5	641171-5
15.85 [.624]	4	641171-4
11.89 [.468]	3	641171-3
7.92 [.312]	2	641171-2

- 1 MATERIAL: CONNECTOR - NYLON UL94V-2 (WHITE).  
CONTACTS - 0.30[.012] THICK COPPER ALLOY  
(0.00038 [.000015] GOLD)
- 2. CONTACTS ACCEPT 24 AWG WIRE WITH 2.41[.095] MAX INSULATION DIAMETER.
- 3. CONTACTS MUST ACCEPT 1.14±0.03[.045±.001] SQUARE POST AND REMAIN LOCKED IN POSITION.
- 4 IDENTIFICATION NUMBER FOR LAST CIRCUIT MAY NOT APPEAR ON ALL ASSEMBLIES.
- 5. DIMENSIONS IN BRACKETS ARE IN INCHES.
- 6. HOUSING FEATURES ARE: FEED-THRU WITH LOCKING RAMP.

DO NOT SCALE PRINT. UNLESS SPECIFIED DIMENSIONS IN mm [INCHES] TOLERANCES ON : 2 PLC DEC ± - 3 PLC DEC ± 0.13 [.005] ANGLES ± -		DR 3-11-96 B. LEWIS		AMP Incorporated Harrisburg, PA 17105-3608	
MATERIAL		CHK 3-11-96 R. SWING			
FINISH		APPD 3-11-96 D. CLARK		NAME	
		APPD 3-11-96 D. CLARK		MTA-156 CONNECTOR ASSEMBLY, 24 AWG, STANDARD	
		PRODUCT SPEC 108-1051		SIZE	
		APPLICATION SPEC 114-1020		CAGE CODE 00779	
		WEIGHT -		DRAWING NO 641171	
				SCALE 4:1	
				SHEET 1 OF 1	