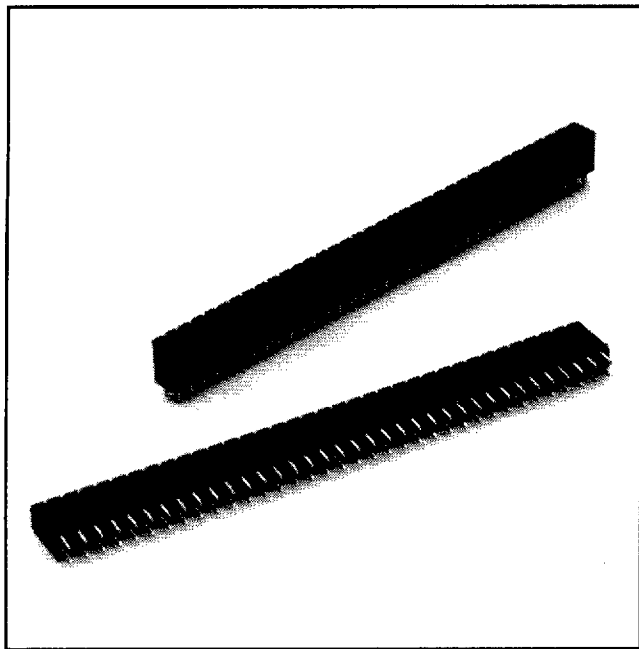


.100" x .100" Boardmount Socket

Straight Solder Tails

929 Series



- 2-80 contact
- Tuning fork contact design
- Gold or tin lead plating
- Solder stand-offs facilitate production wave soldering
- Optional board retention feature

TS-0212-07
Sheet 1 of 2

10

Physical

Insulation

Material: Glass Filled Polyester (PBT)

Flammability: UL 94V-0

Color: Black

Contact

Material: Copper Alloy (C770)

Plating

Underplating & U-Slot: 50 μ " [1.27 μ m] Nickel — QQ-N-290A, Class 2

Wiping Area Options: See Ordering Information

Solder Tails: 100 μ " [2.54 μ m] Tin Lead — MIL-P-81728

Electrical

Current Rating: 1 A

Insulation Resistance: $> 5 \times 10^9 \Omega$ at 500 VDC

Withstanding Voltage: 1500 Vrms at Sea Level

Environmental

Temperature Rating: -40°C to 105°C

UL File No.: E68080

3M Electronic Products Division

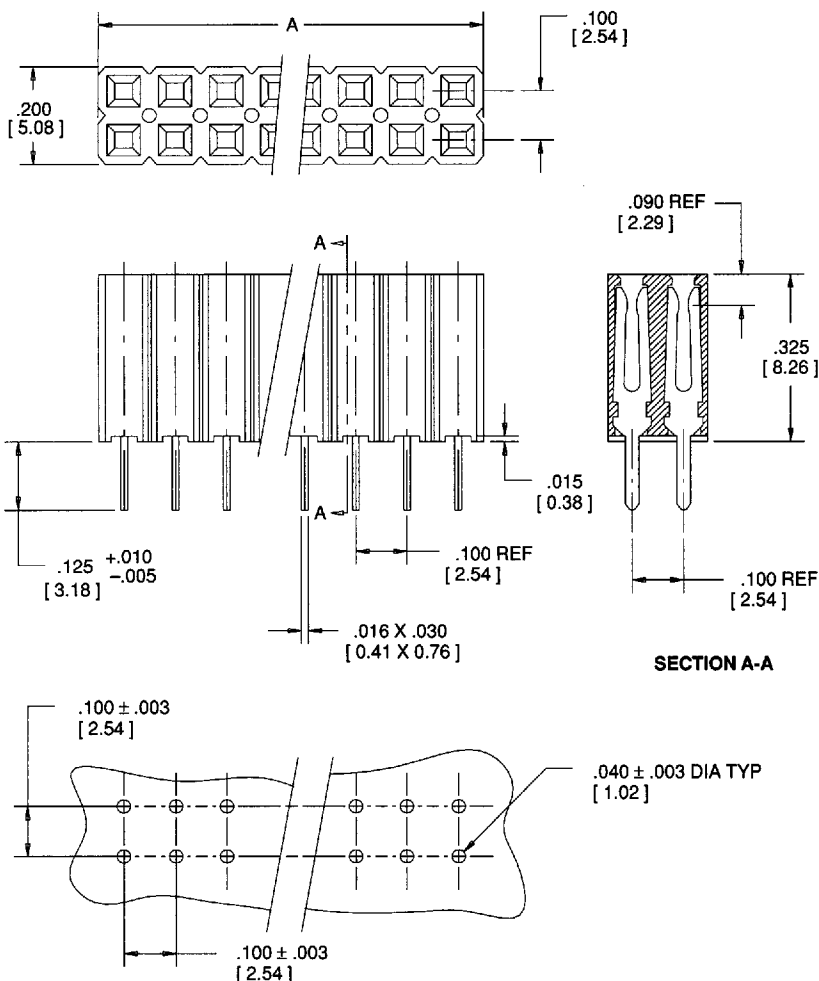
9005413 0000029 005

6801 River Place Blvd.
Austin, TX 78726-9000

.100" x .100" Boardmount Socket

Straight Solder Tails

929 Series



RECOMMENDED MOUNTING HOLE PATTERN
(SHOWN FOR MOUNTING SIDE OF BOARD)

CONTACT QTY	CONTACT QTY CODE	DIM. A
02	01	.100 [2.54]
04	02	.200 [5.08]
06	03	.300 [7.62]
08	04	.400 [10.16]
10	05	.500 [12.70]
12	06	.600 [15.24]
14	07	.700 [17.78]
16	08	.800 [20.32]
18	09	.900 [22.86]
20	10	1.100 [25.40]
22	11	1.100 [27.94]
24	12	1.200 [30.48]
26	13	1.300 [33.02]
28	14	1.400 [35.56]
30	15	1.500 [38.10]
32	16	1.600 [40.64]
34	17	1.700 [43.18]
36	18	1.800 [45.72]
38	19	1.900 [48.26]
40	20	2.000 [50.80]
42	21	2.100 [53.34]
44	22	2.200 [55.88]
46	23	2.300 [58.42]
48	24	2.400 [60.96]
50	25	2.500 [63.50]
52	26	2.600 [66.04]
54	27	2.700 [68.58]
56	28	2.800 [71.12]
58	29	2.900 [73.66]
60	30	3.000 [76.20]
62	31	3.100 [78.74]
64	32	3.200 [81.28]
66	33	3.300 [83.82]
68	34	3.400 [86.36]
70	35	3.500 [88.90]
72	36	3.600 [91.44]
80	40	4.000 [101.60]

Inch
[mm]

Tolerance Unless Noted			
	.0	.00	.000
Inch	± .1	± .01	± .005

[] Dimensions for Reference Only

NOTES:

1. MAXIMUM RECOMMENDED MATING HEADER PIN LENGTH IS .25 [6.4].
2. RECOMMENDED TO BE MATED TO THE .100 [2.54] X .100 [2.54] PIN STRIP HEADERS: 2400 SERIES AND 929 SERIES.

Ordering Information

9X9XXX-01-XX-XX

Board Mounting Option:
2 = Standard Product without Kinked Tail
R = with Kinked Tail Board Retention Feature

Plating Options:*

852 = Gold
975 = 100 μ" [2.54 μm] Tin Lead

Contact Quantity:
See Table

Gold Plating Thickness on Wiping Area:*

10 = 10 μ" [0.25 μm]
15 = 15 μ" [0.38 μm]
30 = 30 μ" [0.76 μm]

(No entry required for Tin Lead plating)
*All Plating Over 50 μ" [1.27 μm] Nickel

Sheet 2 of 2

TS-0212-07