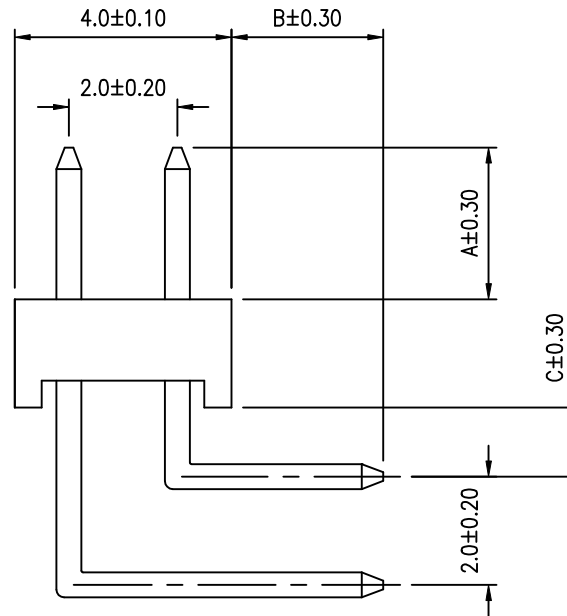
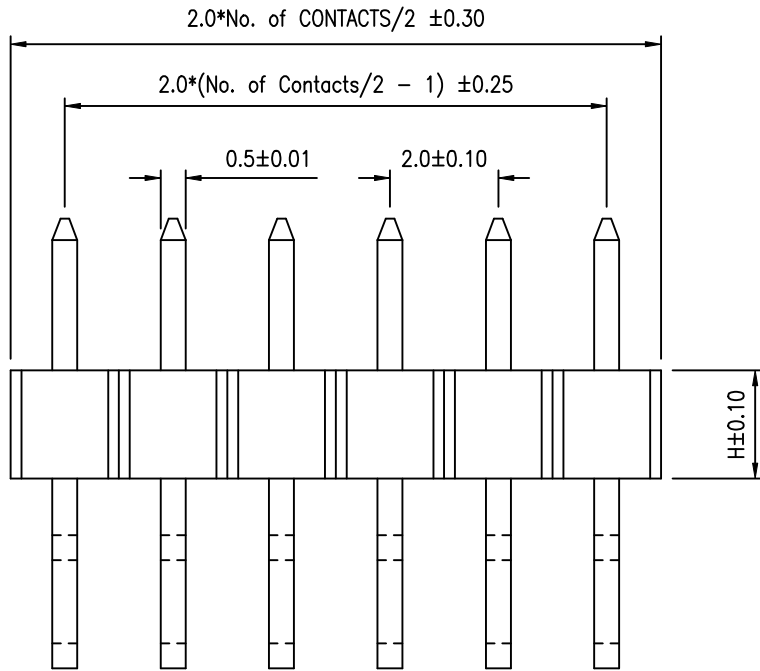


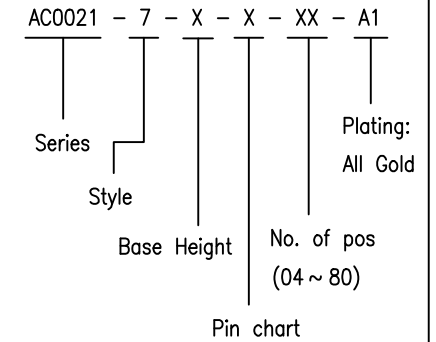
REV	ECN NO.	APP.	DATE
A	NEW DESIGN		



**SPECIFICATION**

- \* Current Rating: 1 A
- \* Withstanding Voltage: 600 VAC ( 1 min. )
- \* Insulation Resistance: 1000 Megohms MIN.
- \* Contact Resistance: 30 Milliohms MAX.
- \* Operating Temperature:  $-40^{\circ}\text{C}$  to  $+85^{\circ}\text{C}$
- \* Retention Force: 600g MIN.

**ORDER INFORMATION**



**MATERIAL**

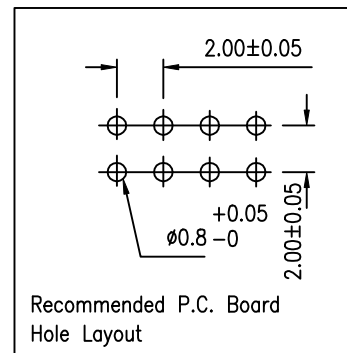
- \* Contact: BRASS  
0.50mm square post
- \* Insulator: PBT & 30% G.F.
- \* Plating: All Gold

**Pin Chart**

Pin	A	B	C
1	4.00	2.80	1.75
2			
3			
4			

**Base Height**

Base	H
1	2.0
2	1.5
3	
4	



**TECHWIN OPTO-ELECTRONICS CO., LTD.**

0.0±	SCALE:	TITLE:	PART NO:
0.00±	UNIT:	2.00X2.00MM (.079"*.079") PIN	APP BY:
0.000±	MM	HEADER Dual Row	CHK BY:
		MATL: PBT + 30% G.F.	DR BY: 張金枝
		DWG. NO. A106A	