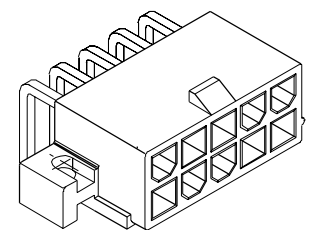
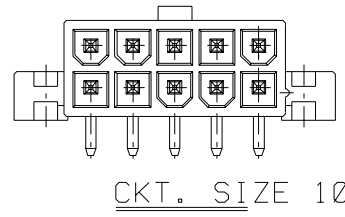
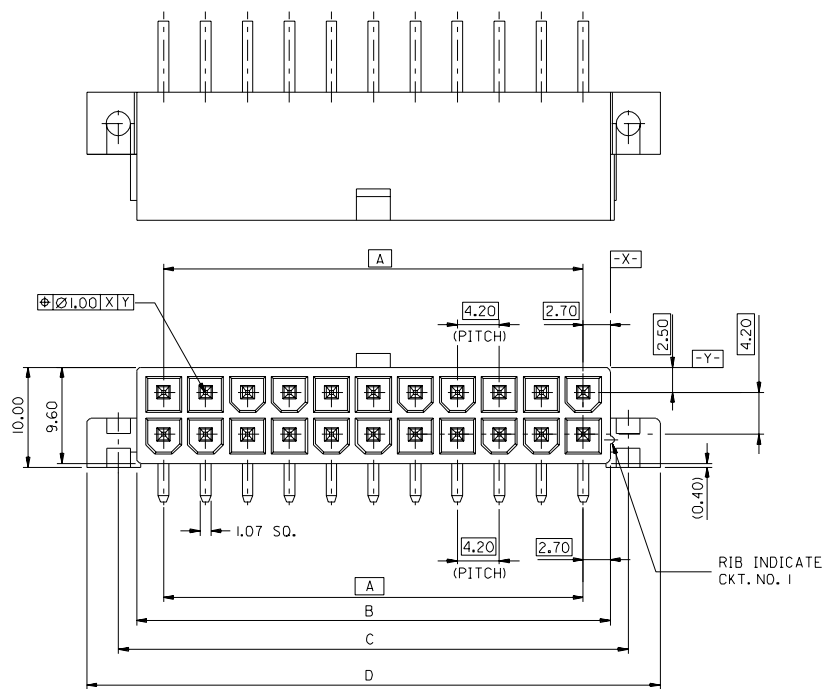
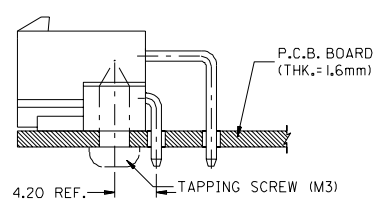
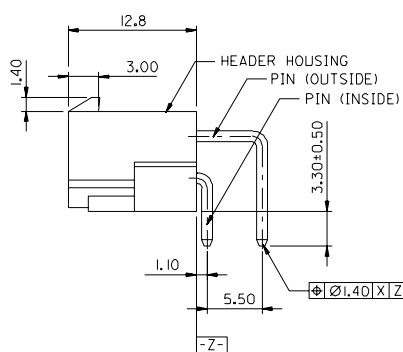


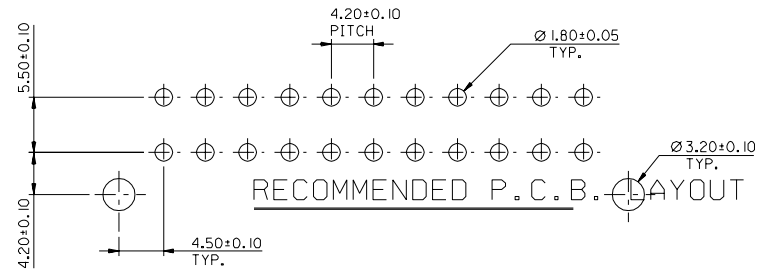
DWG. NO. SD 87427-*** | *
 CAD FILE S87427A.LDGN
 DO NOT SCALE DRAWING



ISOMETRIC VIEW



RECOMMENDED INSTALLATION PATTERN



RECOMMENDED P.C.B. LAYOUT

LEGEND

- 87427-****
- CKT. SIZE (SEE SHEET 2)
 - PLATING OPTIONS
 - 2 = NOTE 2
 - 3 = NOTE 3
 - PACKAGING OPTIONS
 - 1 = SHEET PACKED
 - 6 = TRAY PACKED

NOTES

1. MATERIAL - HEADER : NYLON 46, UL94V-0, COLOR BEIGE
PIN : BRASS (1.07 SQUARE)
2. PLATING OF PIN
TIN 2.54um MIN. OVER NICKEL 1.27um MIN.
3. PLATING OF PIN
TIN 4-10um OVER COPPER 2-8um.

SHT	1	2
REV	C	A

				MATERIAL :		SEE NOTES		MOLEX SINGAPORE PTE LTD SHEET 1 OF 2		
C	REVISE AS PER ECN	S1998-0342	RS	980121	FINISH :		GENERAL TOLERANCES ± 0.20/0.008		REV C	
BI	ADD NEW CIRCUIT SIZES	S60378	SAM	SO	960205	SEE NOTES		DWG. NO. SD 87427-*** *		
B	REVISE PER ECN	S50420	S.O.	EPP	950227					
A1	REVISE PER ECN	S50155	S.O.	EPP	941006					
A	RELEASE TO SALES	S40628	S.O.	EPP	940624					
LTR	REVISION RECORD	ECN	DR	CHK	DATE	DRAWN BY	STEVEN OUEK	CHK'D BY	EDMUND POH	TITLE : 4.2MM W-T-B, HIGH TEMP. RIGHT ANGLE HEADER. (WITH MOUNTING FLANGES)
REVISE ONLY ON CAD SYSTEM						APPR'D BY	ROY WONG	SCALE	2 : 1	

DWG. NO. SD 87427-**-**1*

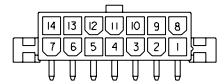
CAD FILE S87427B.I.DGN

▽

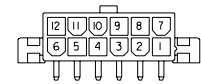
DO NOT SCALE DRAWING

8 7 6 5 4 3 2 1

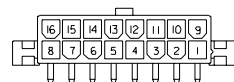
F
E
D
C
B
A



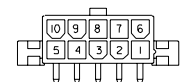
CKT. SIZE 14



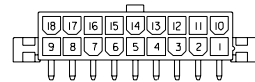
CKT. SIZE 12



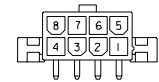
CKT. SIZE 16



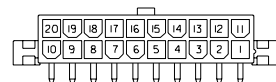
CKT. SIZE 10



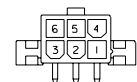
CKT. SIZE 18



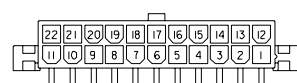
CKT. SIZE 8



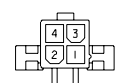
CKT. SIZE 20



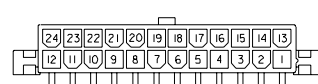
CKT. SIZE 6



CKT. SIZE 22



CKT. SIZE 4



CKT. SIZE 24



CKT. SIZE 2

61.60	55.20	51.60	46.20	87427-241*	87427-246*	24
57.40	51.00	47.40	42.00	87427-221*	87427-226*	22
53.20	46.80	43.20	37.80	87427-201*	87427-206*	20
49.00	42.60	39.00	33.60	87427-181*	87427-186*	18
44.80	38.40	34.80	29.40	87427-161*	87427-166*	16
40.60	34.20	30.60	25.20	87427-141*	87427-146*	14
36.40	30.00	26.40	21.00	87427-121*	87427-126*	12
32.20	25.80	22.20	16.80	87427-101*	87427-106*	10
28.00	21.60	18.00	12.60	87427-081*	87427-086*	8
23.80	17.40	13.80	8.40	87427-061*	87427-066*	6
19.60	13.20	9.60	4.20	87427-041*	87427-046*	4
15.40	9.00	5.40	--	87427-021*	87427-026*	2
D	C	B	A	ENG. NO. SHEET PACKED	ENG. NO. TRAY PACKED	CKT. SIZE

MATERIAL :				SEE NOTES AT SHT 1		MOLEX SINGAPORE PTE LTD SHEET 2 OF 2
FINISH :				SEE NOTES AT SHT 1		
B	REVISE PER ECN S1999-0098	—	SHAN	980909		
A	ADD NEW CIRCUIT SIZES	S60378	SAM	960205		
LTR	REVISION RECORD	ECN	DR	CHK	DATE	DRAWN BY SAMC 960205
REVISE ONLY ON CAD SYSTEM					APPR'D BY	CHK'D BY SCALE 1:1
						TITLE : 4.2MM W-T-B, HIGH TEMP. RIGHT ANGLE HEADER. (WITH MOUNTING FLANGES)

ALL DIMENSIONS IN MM

THIS DRAWING CONTAINS INFORMATION THAT IS PROPRIETARY TO MOLEX (S)PTE LTD AND SHOULD NOT BE USED WITHOUT WRITTEN PERMISSION