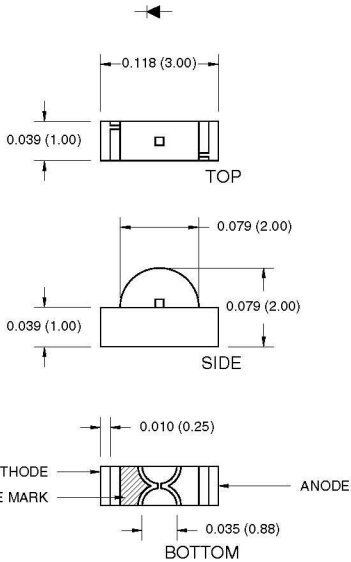




SURFACE MOUNT LED LAMP

Right Angle - (Side Looker)

PACKAGE DIMENSIONS



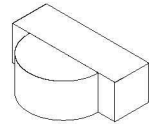
NOTE:
Dimensions are in inches (mm).

PURE GREEN
SOFT ORANGE

QTLP610C-5
QTLP610C-8

FEATURES

- Ultra-miniature
- Wide viewing angle of 140°
- Water clear optics
- Available in 0.315" (8mm) width tape on 7" (178mm) diameter
- Moisture-proof packaging



DESCRIPTION

These right angle surface mount lamps emit light in the lateral direction and are particularly suitable for edge lighting LCDs, edge-cards, as well as other standard printed circuit board applications.

ABSOLUTE MAXIMUM RATINGS ($T_A = 25^\circ\text{C}$ unless otherwise specified)

| Parameter | Pure Green QTLP610C-5 | Soft Orange QTLP610C-8 | Units |
|--|--------------------------|---------------------------|-------|
| Continuous Forward Current - I_F | 30 | 30 | mA |
| Peak Forward Current - I_F ($f = 1.0$ KHz, Duty Factor = 1/10) | 160 | 160 | mA |
| Reverse Voltage - V_R ($I_R = 10 \mu\text{A}$) | 5 | 5 | V |
| Power Dissipation - P_D | 100 | 100 | mW |
| Operating Temperature - T_{OPR} | -40 to +100 | | °C |
| Storage Temperature - T_{STG} | -40 to +100 | | °C |
| Lead Soldering Time - T_{SOL} | | | |
| Wave | 260 for 5 sec | | °C |
| Reflow | 260 for 10 sec | | |



SURFACE MOUNT LED LAMP

Right Angle - (Side Looker)

**PURE GREEN
SOFT ORANGE**

**QTLP610C-5
QTLP610C-8**

| ELECTRICAL / OPTICAL CHARACTERISTICS (T _A = 25°C) | | | |
|--|--------------------------|---------------------------|------------------------|
| Part Number | Pure Green QTLP610C-5 | Soft Orange QTLP610C-8 | Condition |
| Luminous Intensity (mcd) | | | I _F = 20 mA |
| Minimum | 2.0 | 3.0 | |
| Typical | 4.0 | 6.0 | |
| Forward Voltage (V) | | | I _F = 20 mA |
| Maximum | 2.8 | 2.8 | |
| Typical | 2.1 | 2.1 | |
| Peak Wavelength (nm) | 555 | 610 | I _F = 20 mA |
| Spectral Line Half Width (nm) | 30 | 40 | I _F = 20 mA |
| Viewing Angle (°) | 140 | 140 | I _F = 20 mA |

TYPICAL PERFORMANCE CURVES

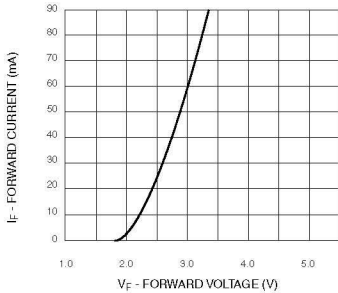


Fig. 1 Forward Current vs. Forward Voltage

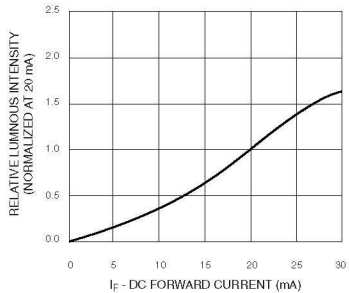


Fig. 2 Relative Luminous Intensity vs. DC Forward Current



SURFACE MOUNT LED LAMP

Right Angle - (Side Looker)

PURE GREEN
SOFT ORANGE

QTL P610C-5
QTL P610C-8

TYPICAL PERFORMANCE CURVES

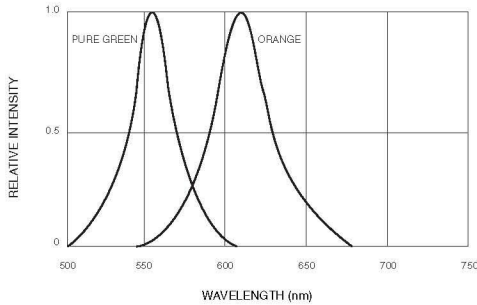


Fig. 3 Relative Intensity vs. Peak Wavelength

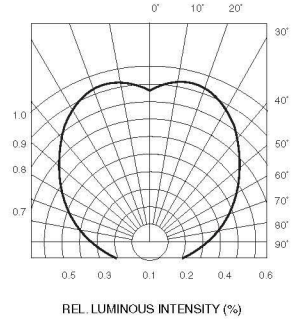


Fig. 4 Radiation Diagram

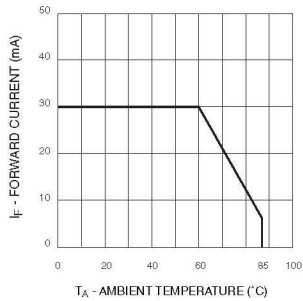


Fig. 5 Current Derating Curve



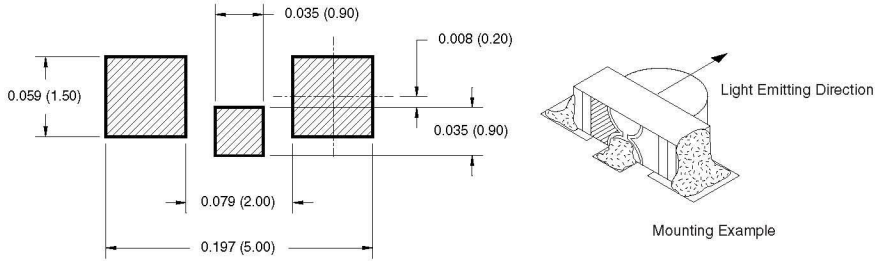
SURFACE MOUNT LED LAMP

Right Angle - (Side Looker)

PURE GREEN
SOFT ORANGE

QTL P610C-5
QTL P610C-8

RECOMMENDED PRINTED CIRCUIT BOARD PATTERN



RECOMMENDED IR REFLOW SOLDERING PROFILE

