

TABLE 1

LEAD STYLE	MOUNT STYLE	"B"	"C" MAX	"D"	TERMINAL	OVERALL PIN LENGTH (REF)
-01	-DV	.230	.303	.280	T-1S6-16-X-2	.445 [11.30] REF
-01	-TM, -TV	.230	-	-	T-1S6-17-X-2	.480 [12.19] REF
-02	-DV	.320	.293	.370	T-1S6-08-X-2	.530 [13.46] REF
-03	-DV	.420	.293	.470	T-1S6-15-X-2	.630 [16.00] REF
-04	-DV	.120	.303	.270	T-1S6-21-X-2	.335 [8.51] REF
-05	-DV	.075	.323	.270	T-1S6-18-X-2	.300 [7.62] REF

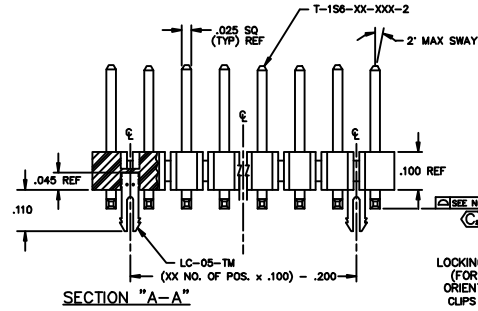
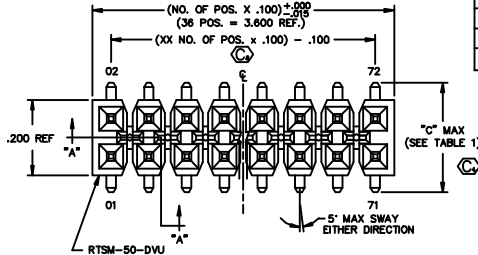
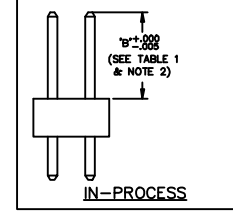


FIG. 1
LOCKING CLIP OPTION SHOWN
(FOR STANDARD OPTION,
ORIENT CAVITY AS SHOWN)
CLIPS N/A WITH -A OPTION.



- PLATING SPEC.
(VALUES GIVEN ARE IN MICRO-INCHES)
- T: MATTE TIN CONTACT AND TAIL
 - S: SELECTIVE, 30 AU / 50 NI MIN ON CONTACT, MATTE TIN TAIL
 - G: GOLD, 10 AU / 50 NI MIN ON CONTACT, 3 AU / 50 NI MIN ON TAIL
 - L: LIGHT SELECTIVE, 10 AU / 50 NI MIN ON CONTACT, MATTE TIN TAIL
 - TL: TIN/LEAD (90/10/-50) CONTACT AND TAIL (AVAILABLE ONLY ON LEAD STYLES -01-DV, -02, & -04)
 - STL: SELECTIVE, 30 AU / 50 NI MIN ON CONTACT, TIN/LEAD (90/10 +/-50) (AVAILABLE ONLY ON LEAD STYLES -01, -02 & -04)
 - F: FLASH SELECTIVE, 3 AU / 50 NI MIN ON CONTACT, MATTE TIN TAIL
 - HF: HEAVY GOLD, 30 AU / 50 NI MIN ON CONTACT, 3 AU / 50 NI MIN ON TAIL
 - TM: MATTE TIN CONTACT AND TAIL
 - SM: SELECTIVE, 30 AU / 50 NI ON CONTACT, MATTE TIN TAIL
 - LM: LIGHT SELECTIVE, 10 AU / 50 NI MIN ON CONTACT, MATTE TIN TAIL
 - FM: FLASH SELECTIVE, 3 AU / 50 NI MIN ON CONTACT, MATTE TIN TAIL
 - SS: STRIPE SELECTIVE, 30 AU / 50 NI MIN ON CONTACT, MATTE TIN TAIL (SEE NOTE 13)

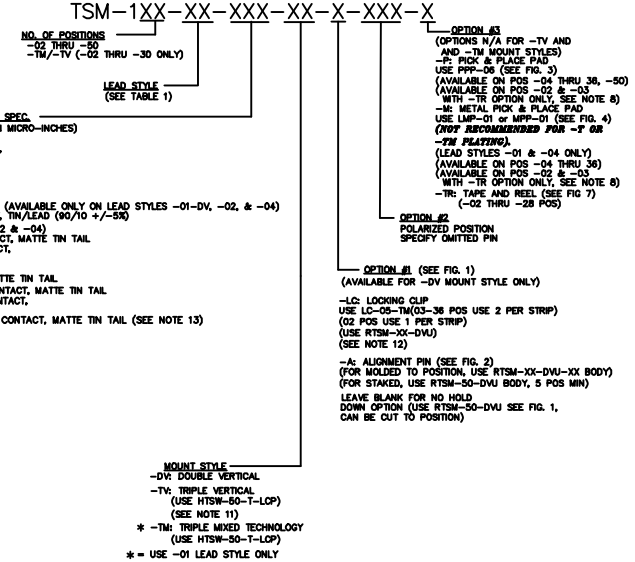


FIG. 2
-A: ALIGNMENT PIN OPTION
DIFFERENT AS SHOWN. OTHERWISE SAME AS FIG. 1.

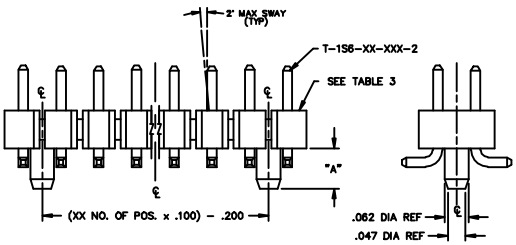
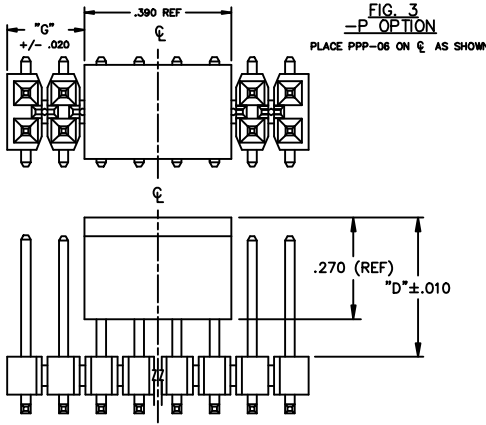


TABLE 3

	"A"	BODY	MIN # OF POS
MOLDED	.100 REF	RTSM-50-DVU-XX	2
* STAKED	.100±.005	RTSM-50-DVU	5

* = USE TWO SM-AH'S

FIG. 3
-P OPTION
PLACE PPP-06 ON ε AS SHOWN



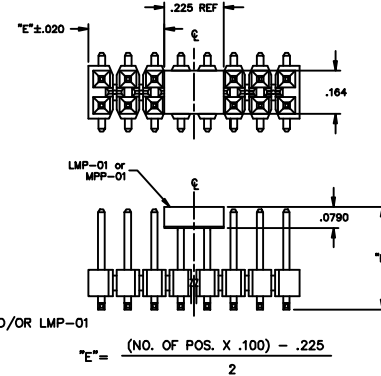
'C' +/- .020 = (NO. OF POS. X .100) - .390

FIG. 4
-M OPTION
SCALE .7X
PLACE LMP-01 or MPP-01 ON ε AS SHOWN

TABLE 2

LEAD STYLE	"E"
-01	.388
-04	.278

NOTE:
HAND FILL- USE MPP-01 AND/OR LMP-01
MACHINE FILL- USE LMP-01



MATERIAL:
INSULATOR:
LIQUID CRYSTAL POLYMER
UL 94 V0
COLOR:BLACK
TERMINALS:
PHOSPHOR BRONZE