



# 5 & 12 VOLT RESISTOR LEDs

T<sup>3/4</sup>, T1 (3mm) & T1<sup>3/4</sup> (5mm) INTERNAL RESISTOR

LEDTRONICS PART NO.	LED COLOR	T <sub>opr</sub> / T <sub>stg</sub> (see notes)	ABSOLUTE MAX. RATINGS T <sub>a</sub> =25°C				ELECTRO-OPTICAL CHARACTERISTICS T <sub>a</sub> =25°C						FIGURE
			P <sub>d</sub> mW	I <sub>fp</sub> mA	I <sub>f</sub> mA	V <sub>r</sub> V	I <sub>f</sub> mA typ	I <sub>v</sub> mcd min/typ	V <sub>f</sub> typ/max	VIEW ANGLE	I <sub>r</sub> MAX μA	λ <sub>P</sub> nm	
<b>T<sup>3/4</sup> (2mm) SUBMINIATURE AXIAL LEAD 5 VOLT RESISTOR LED DIFFUSED</b>													
L080TR1-5V/3	STD. RED	1/3	24	-	4	6	3	0.3/-	5/6	40	10	650	1
L080TR1-5V/5	STD. RED	1/3	48	-	8	6	6	0.6/1.2	5/6	40	10	650	1
L080TR1-5V/16	STD. RED	1/3	125	-	21	6	16	1.0/3.0	5/6	40	10	650	1
L080TR4H-5V/4	HI-EFF. RED	1/3	135	-	5	6	3.5	0.8/2.0	5/6	90	100	635	2
L080TR4H-5V/10	HI-EFF. RED	1/3	135	-	13	5	9.6	1.3/5.0	5/6	90	100	635	2
L080TY3-5V	YELLOW	1/3	40	-	6.7	6	5	0.3/0.6	5/6	40	10	583	1
L080TY3H-5V	YELLOW	1/3	85	-	5	6	3.5	0.9/2.0	5/6	90	100	583	2
L080TG3-5V	GREEN	1/3	140	-	6.7	6	5	0.2/0.5	5/6	40	10	565	1
L080TG3H-5V	GREEN	1/3	135	-	5	6	3.5	0.8/2.0	5/6	90	100	565	2
<b>T1 (3mm) 5 &amp; 12 VOLT INTEGRATED RESISTOR LED DIFFUSED 60°</b>													
L120TR1-5V	STD. RED	1/3	110	-	15	5	10	0.8/1.5	5/7.5	60	100	650	3
L120TR3-5V	HI-EFF. RED	1/3	110	-	15	5	10	1.5/4.0	5/7.5	60	100	635	3
L120TR3B-5V	HI-EFF. RED	1/3	110	-	15	5	10	2.5/5.8	5/7.5	36	100	635	4
L120TY3-5V	YELLOW	1/3	110	-	15	5	10	1.5/4.0	5/7.5	60	100	585	3
L120TY3B-5V	YELLOW	1/3	110	-	15	5	10	2.5/5.8	5/7.5	36	100	585	4
L120TG3-5V	GREEN	2/3	110	-	15	5	12	1.5/4.0	5/7.5	60	100	565	3
L120TG3B-5V	GREEN	2/3	110	-	15	5	10	2.5/5.8	5/7.5	36	100	565	4
L120TR3-12V	HI-EFF. RED	1/3	300	-	20	5	13	1.5/4.0	12/15	60	100	635	3
L120TY3-12V	YELLOW	1/3	300	-	20	5	13	1.5/4.0	12/15	60	100	585	3
L120TG3-12V	GREEN	2/3	300	-	20	5	13	1.5/4.0	12/15	60	100	565	3
<b>T1<sup>3/4</sup> (5mm) 5 &amp; 12 VOLT INTEGRATED RESISTOR LED DIFFUSED 60°</b>													
L200TR1-5V	STD. RED	1/3	110	-	20	5	10	1.0/2.0	5/7.5	60	100	650	5
L200TR3-5V	HI-EFF. RED	1/3	110	-	15	5	10	1.5/4.0	5/7.5	60	100	635	5
L200TR3A-5V	HI-EFF. RED	1/3	110	-	15	5	10	5.2/8.7	5/7.5	45	100	635	6
L200T03-5V	ORANGE	1/3	110	-	15	5	10	0.8/4.0	5/7.5	60	100	635	5
L200TY3-5V	YELLOW	1/3	110	-	15	5	10	1.5/4.0	5/7.5	60	100	585	5
L200TY3A-5V	YELLOW	1/3	110	-	15	5	10	5.2/8.7	5/7.5	45	100	585	6
L200TG3-5V	GREEN	2/3	110	-	15	5	12	1.5/4.0	5/7.5	60	100	565	5
L200TG3A-5V	GREEN	2/3	110	-	15	5	10	5.2/8.7	5/7.5	45	100	565	6
L200TR1-12V	STD. RED	1/3	225	-	15	5	10	1.0/2.0	12/15	75	100	650	5
L200TR3-12V	HI-EFF. RED	1/3	300	-	20	5	13	1.5/4.0	12/15	60	100	635	5
L200TY3-12V	YELLOW	1/3	300	-	20	5	13	1.5/4.0	12/15	60	100	585	5
L200TG3-12V	GREEN	2/3	300	-	20	5	13	1.5/4.0	12/15	60	100	565	5

T<sub>opr</sub> notes: 1.) -40°C TO +85°C 2.) -20°C TO +85°C  
 T<sub>stg</sub> notes: 3.) -55°C TO +100°C  
 Jctn/Cath Temp. 145°C/Watt  
 Lead Soldering Temp. 260°C max., 5 sec.  
 1/16" (1.6mm) from body

**SPECIALS**  
 INTEGRATED RESISTOR CLEAR LEDS AVAILABLE

FIG 1

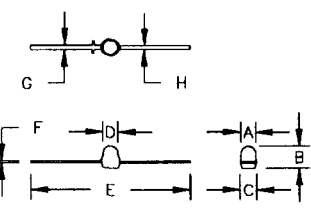


FIG 2

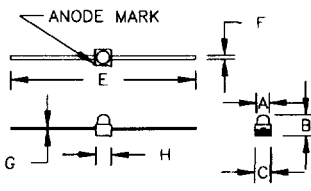


FIG 3

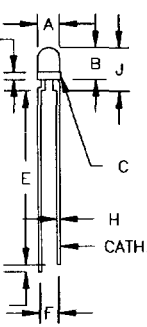


FIG 4

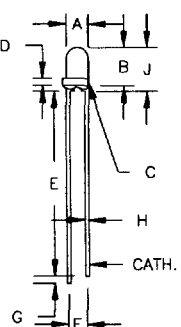


FIG 5

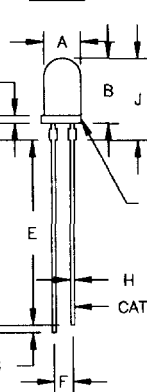
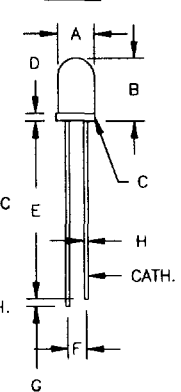


FIG 6



**MECHANICAL SPECIFICATIONS**

Tol: .XXX=.005", .XX=.010"

FIG	"A" (O.D.) (mm)	"B" (mm)	"C" DIA. (mm)	"D" (mm)	"E" TYP. (mm)	"F" (mm)	"G" NOM. (mm)	"H" SQ. (mm)	"J" (mm)
1	.080 2(mm)	.120 3(mm)	.090 2.3(mm)	.100 2.5(mm)	.850 21.6(mm)	.010 .25(mm)	.025 .64(mm)	.020 .5(mm)	---
2	.070 1.8(mm)	.115 2.9(mm)	.087 2.1(mm)	---	1.10 27.9(mm)	.020 .51(mm)	.008 .2(mm)	.080 2.01(mm)	---
3	.118 3(mm)	.175 4.4(mm)	.125 3.2(mm)	.04 1(mm)	1.00 25.4(mm)	.100 2.5(mm)	.04 1(mm)	.018 .4(mm)	.235 6(mm)
4	.118 3(mm)	.205 5.2(mm)	.157 4(mm)	.04 1(mm)	1.00 25.4(mm)	.100 2.5(mm)	.05 1.3(mm)	.020 .5(mm)	.22 5.5(mm)
5	.197 5(mm)	.350 8.9(mm)	.230 5.8(mm)	.04 1(mm)	1.00 25.4(mm)	.100 2.5(mm)	.04 1(mm)	.020 .5(mm)	.440 11.2(mm)
6	.197 5(mm)	.340 8.6(mm)	.220 5.6(mm)	.04 1(mm)	1.00 25.4(mm)	.100 2.5(mm)	.05 1.3(mm)	.020 .5(mm)	---

REV INDICATES REVISED DATA