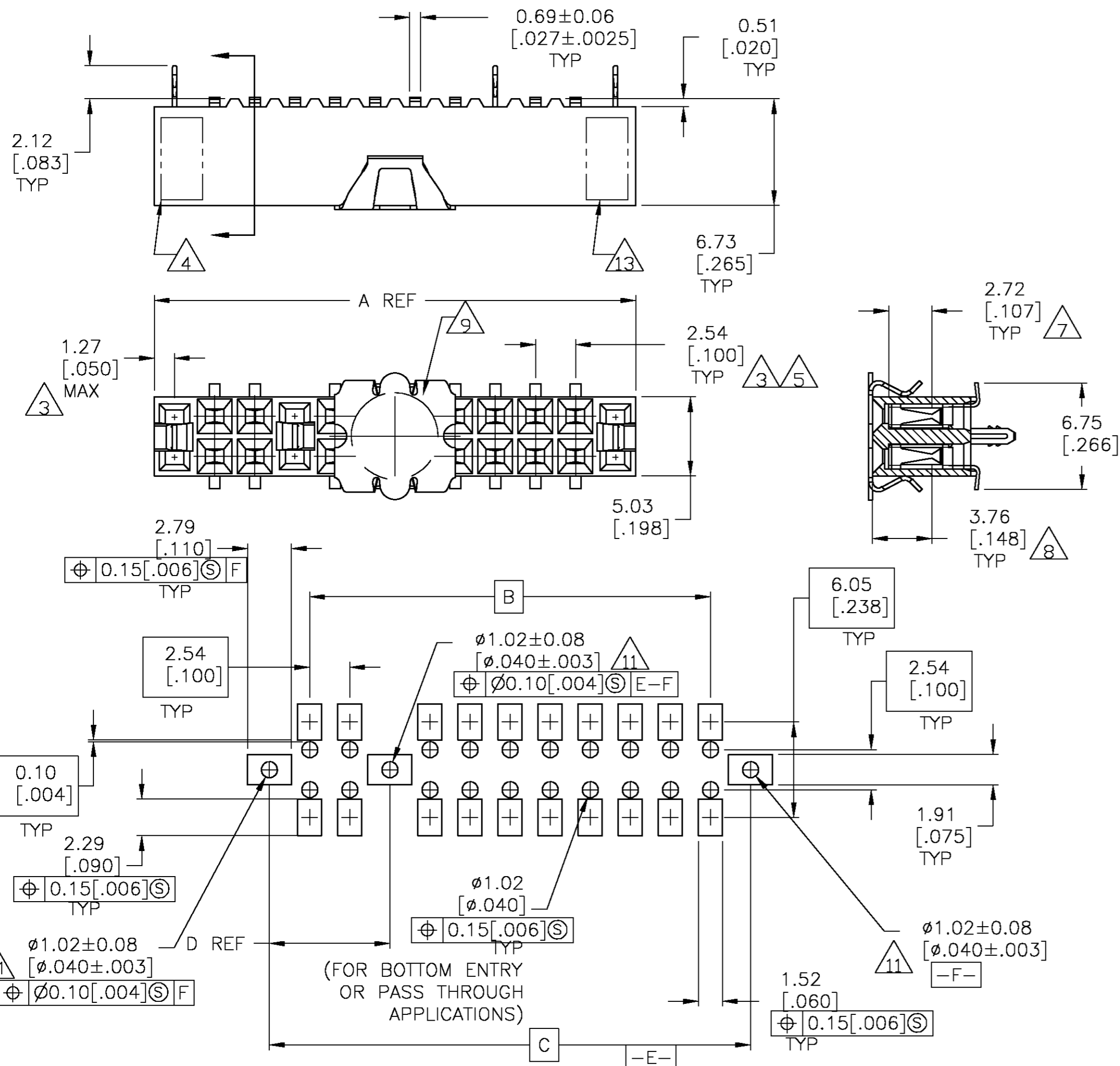


THIS DRAWING IS UNPUBLISHED. RELEASED FOR PUBLICATION
 © COPYRIGHT BY TYCO ELECTRONICS CORPORATION. ALL RIGHTS RESERVED.

LOC	DIST	REVISIONS					
AD	00	P	LTR	DESCRIPTION	DATE	DWN	APVD
		N		EC 0G3C 0676 04	13DEC04	BSV	JO



RECOMMENDED PC BOARD LAYOUT
 0.20[.008] THICK STENCIL

2	53.34[2.100]	106.68[4.200]	99.06[3.900]	09.22[4.300]	80	4-147103-0
2	50.80[2.000]	104.14[4.100]	96.52[3.800]	106.68[4.200]	78	3-147103-9
2	50.80[2.000]	101.60[4.000]	93.98[3.700]	104.14[4.100]	76	3-147103-8
2	48.26[1.900]	99.06[3.900]	91.44[3.600]	101.60[4.000]	74	3-147103-7
2	48.26[1.900]	96.52[3.800]	88.90[3.500]	99.06[3.900]	72	3-147103-6
2	45.72[1.800]	93.98[3.700]	86.36[3.400]	96.52[3.800]	70	3-147103-5
2	10	88.90[3.500]	83.82[3.300]	91.44[3.600]	68	3-147103-4
2	10	86.36[3.400]	81.28[3.200]	88.90[3.500]	66	3-147103-3
2	10	83.82[3.300]	78.74[3.100]	86.36[3.400]	64	3-147103-2
2	10	81.28[3.200]	76.20[3.000]	83.82[3.300]	62	3-147103-1
2	10	78.74[3.100]	73.66[2.900]	81.28[3.200]	60	3-147103-0
2	10	76.20[3.000]	71.12[2.800]	78.74[3.100]	58	2-147103-9
2	10	73.66[2.900]	68.58[2.700]	76.20[3.000]	56	2-147103-8
2	10	71.12[2.800]	66.04[2.600]	73.66[2.900]	54	2-147103-7
2	10	68.58[2.700]	63.50[2.500]	71.12[2.800]	52	2-147103-6
2	10	66.04[2.600]	60.96[2.400]	68.58[2.700]	50	2-147103-5
2	10	63.50[2.500]	58.42[2.300]	66.04[2.600]	48	2-147103-4
2	10	60.96[2.400]	55.88[2.200]	63.50[2.500]	46	2-147103-3
2	10	58.42[2.300]	53.34[2.100]	60.96[2.400]	44	2-147103-2
2	10	55.88[2.200]	50.80[2.000]	58.42[2.300]	42	2-147103-1
2	10	53.34[2.100]	48.26[1.900]	55.88[2.200]	40	2-147103-0
2	10	50.80[2.000]	45.72[1.800]	53.34[2.100]	38	1-147103-9
2	10	48.26[1.900]	43.18[1.700]	50.80[2.000]	36	1-147103-8
2	10	45.72[1.800]	40.64[1.600]	48.26[1.900]	34	1-147103-7
2	10	43.18[1.700]	38.10[1.500]	45.72[1.800]	32	1-147103-6
2	10	40.64[1.600]	35.56[1.400]	43.18[1.700]	30	1-147103-5
2	10	38.10[1.500]	33.02[1.300]	40.64[1.600]	28	1-147103-4
2	10	35.56[1.400]	30.48[1.200]	38.10[1.500]	26	1-147103-3
2	10	33.02[1.300]	27.94[1.100]	35.56[1.400]	24	1-147103-2
2	10	30.48[1.200]	25.40[1.000]	33.02[1.300]	22	1-147103-1
2	10	27.94[1.100]	22.86[.900]	30.48[1.200]	20	1-147103-0
2	10	25.40[1.000]	20.32[.800]	27.94[1.100]	18	147103-9
2	10	22.86[.900]	17.78[.700]	25.40[1.000]	16	147103-8
2	10	20.32[.800]	15.24[.600]	22.86[.900]	14	147103-7
2	10	17.78[.700]	12.70[.500]	20.32[.800]	12	147103-6
2	10	15.24[.600]	10.16[.400]	17.78[.700]	10	147103-5
2	10	12.70[.500]	7.62[.300]	15.24[.600]	8	147103-4
2	10	10.16[.400]	5.08[.200]	12.70[.500]	6	147103-3
2	10	7.62[.300]	2.54[.100]	10.16[.400]	4	147103-2
2	10	5.08[.200]	-	7.62[.300]	2	147103-1

- 1 HOUSING: FLAME RETARDANT, GLASS FILLED, POLYESTER, COLOR: BLACK. CONTACT: PHOSPHOR BRONZE. VACUUM COVER: STAINLESS STEEL
- 2. CONTACT FINISH: 3.81-7.62 MICROMETERS (.000150-.000300) BRIGHT TIN-LEAD ALL OVER 1.27 MICROMETERS (.000050) MINIMUM NICKEL.
- 3 THESE DIMENSIONS PERTAIN TO CAVITY CENTERLINES ONLY NOT TO CONTACT LOCATIONS
- 4 PART NUMBER AND DATE CODE ARE MARKED IN APPROXIMATE LOCATION SHOWN.
- 5 TOLERANCE IS NON-CUMULATIVE.
- 6 2 POSITION DATE CODE IS MARKED OPPOSITE SIDE OF TYCO LOGO.
- 7 POINT-OF-MEASUREMENT DIMENSION FOR PLATING THICKNESS (INSIDE CONTACT BEAM).
- 8 POINT-OF-CONTACT DIMENSION.
- 9 ø5.51[.217] MIN TARGET AREA FOR VACUUM PICK UP. COVER TO BE REMOVED AFTER SOLDERING.
- 10 NO CENTER HOLD DOWN.
- 11 HOLES ø1.125±.025[.0453±.0010] DRILL SIZE [0.03-0.08[.001-.003] COPPER PLATING. 0.007[.003] MIN 60/40 TIN LEAD ø0.94-1.09[.037-.043] AFTER PLATING, 0.25[.010] ANNULAR RING BOTH SIDES.
- 12. PACKAGED IN TUBES.
- 13 TYCO TRADEMARK AND CSA LOGO ARE MOLDED INTO HOUSING.
- 14 NO PART NUMBER REQUIRED ON THIS PART.
- 15 CONTACT FINISH: 3.81-7.62 MICROMETERS (.000150-.000300) MATTE TIN ALL OVER 1.27 MICROMETERS (.000050) MINIMUM NICKEL.
- 16 ROHS 2002/95/EC COMPLIANT.

THIS DRAWING IS A CONTROLLED DOCUMENT.		DWN	M.BINNER	06NOV2002	 Tyco Electronics Corporation Harrisburg, Pa 17105-3608
DIMENSIONS: mm [INCHES]		CHK	J.OLSON	06NOV02	
TOLERANCES UNLESS OTHERWISE SPECIFIED:		APVD	J.OLSON	06NOV02	
0 PLC ± - 1 PLC ± - 2 PLC ± 0.13[.005] 3 PLC ± - 4 PLC ± - ANGLES ± - FINISH		PRODUCT SPEC	108-25022	APPLICATION SPEC	
MATERIAL	1	WEIGHT	-	SCALE	A2 00779 C=147103
CUSTOMER DRAWING		SCALE		4:1	SHEET 1 OF 2

THIS DRAWING IS UNPUBLISHED. RELEASED FOR PUBLICATION
 © COPYRIGHT BY TYCO ELECTRONICS CORPORATION. ALL RIGHTS RESERVED.

LOC	DIST	REVISIONS					
AD	00	P	LTR	DESCRIPTION	DATE	DWN	APVD
		-		SEE SHEET 1	-	-	-

15	53.34	2.100	106.68	4.200	99.06	3.900	09.22	4.300	80	16	9-147103-0
15	50.80	2.000	104.14	4.100	96.52	3.800	06.68	4.200	78	16	8-147103-9
15	50.80	2.000	101.60	4.000	93.98	3.700	04.14	4.100	76	16	8-147103-8
15	48.26	1.900	99.06	3.900	91.44	3.600	01.60	4.000	74	16	8-147103-7
15	48.26	1.900	96.52	3.800	88.90	3.500	99.06	3.900	72	16	8-147103-6
15	45.72	1.800	93.98	3.700	86.36	3.400	96.52	3.800	70	16	8-147103-5
15		10	88.90	3.500	83.82	3.300	91.44	3.600	68	16	8-147103-4
15		10	86.36	3.400	81.28	3.200	88.90	3.500	66	16	8-147103-3
15		10	83.82	3.300	78.74	3.100	86.36	3.400	64	16	8-147103-2
15		10	81.28	3.200	76.20	3.000	83.82	3.300	62	16	8-147103-1
15		10	78.74	3.100	73.66	2.900	81.28	3.200	60	16	8-147103-0
15		10	76.20	3.000	71.12	2.800	78.74	3.100	58	16	7-147103-9
15		10	73.66	2.900	68.58	2.700	76.20	3.000	56	16	7-147103-8
15		10	71.12	2.800	66.04	2.600	73.66	2.900	54	16	7-147103-7
15		10	68.58	2.700	63.50	2.500	71.12	2.800	52	16	7-147103-6
15		10	66.04	2.600	60.96	2.400	68.58	2.700	50	16	7-147103-5
15		10	63.50	2.500	58.42	2.300	66.04	2.600	48	16	7-147103-4
15		10	60.96	2.400	55.88	2.200	63.50	2.500	46	16	7-147103-3
15		10	58.42	2.300	53.34	2.100	60.96	2.400	44	16	7-147103-2
15		10	55.88	2.200	50.80	2.000	58.42	2.300	42	16	7-147103-1
15		10	53.34	2.100	48.26	1.900	55.88	2.200	40	16	7-147103-0
15		10	50.80	2.000	45.72	1.800	53.34	2.100	38	16	6-147103-9
15		10	48.26	1.900	43.18	1.700	50.80	2.000	36	16	6-147103-8
15		10	45.72	1.800	40.64	1.600	48.26	1.900	34	16	6-147103-7
15		10	43.18	1.700	38.10	1.500	45.72	1.800	32	16	6-147103-6
15		10	40.64	1.600	35.56	1.400	43.18	1.700	30	16	6-147103-5
15		10	38.10	1.500	33.02	1.300	40.64	1.600	28	16	6-147103-4
15		10	35.56	1.400	30.48	1.200	38.10	1.500	26	16	6-147103-3
15		10	33.02	1.300	27.94	1.100	35.56	1.400	24	16	6-147103-2
15		10	30.48	1.200	25.40	1.000	33.02	1.300	22	16	6-147103-1
15		10	27.94	1.100	22.86	.900	30.48	1.200	20	16	6-147103-0
15		10	25.40	1.000	20.32	.800	27.94	1.100	18	16	5-147103-9
15		10	22.86	.900	17.78	.700	25.40	1.000	16	16	5-147103-8
15		10	20.32	.800	15.24	.600	22.86	.900	14	16	5-147103-7
15		10	17.78	.700	12.70	.500	20.32	.800	12	16	5-147103-6
14	15	10	15.24	.600	10.16	.400	17.78	.700	10	16	5-147103-5
14	15	10	12.70	.500	7.62	.300	15.24	.600	8	16	5-147103-4
14	15	10	10.16	.400	5.08	.200	12.70	.500	6	16	5-147103-3
14	15	10	7.62	.300	2.54	.100	10.16	.400	4	16	5-147103-2
14	6	OBSOLETE	5.08	.200	-		7.62	.300	2	16	5-147103-1

FINISH	D	C	B	A	NO OF POSN	PART NUMBER
--------	---	---	---	---	------------	-------------

THIS DRAWING IS A CONTROLLED DOCUMENT.

DWN	M.BINNER	06NOV2002
CHK	J.OLSON	06NOV02
APVD	J.OLSON	06NOV02
PRODUCT SPEC	108-25022	
APPLICATION SPEC	114-25018	
WEIGHT	-	
CUSTOMER DRAWING		

tyco Electronics Tyco Electronics Corporation
Harrisburg, Pa 17105-3608

RECEPTACLE ASSEMBLY, MOD IV,
DOUBLE ROW, DUAL ENTRY, .100X.100CL,
SURFACE MOUNT, AMPMODU

SIZE	A2	CAGE CODE	00779	DRAWING NO	C=147103	RESTRICTED TO	-
SCALE	1:1	SHEET	2	OF	2	REV	N