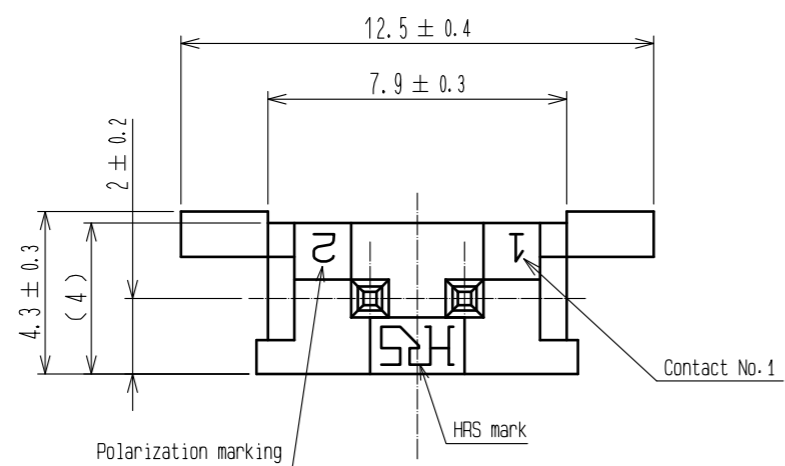
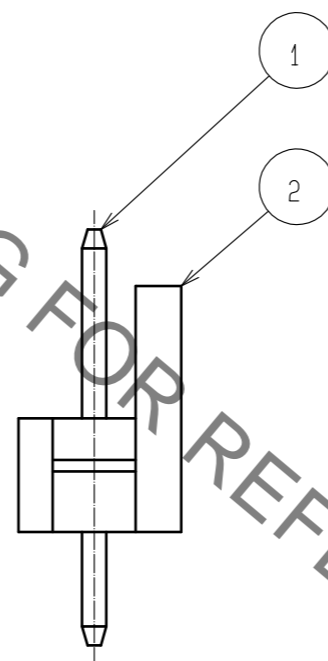
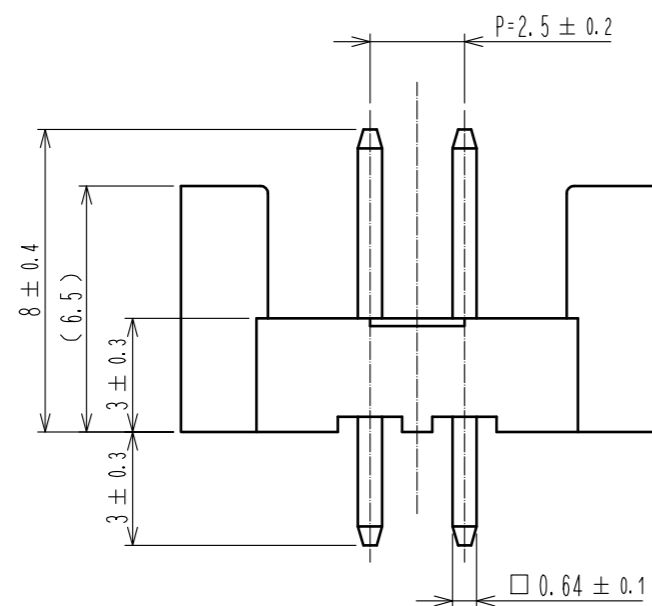
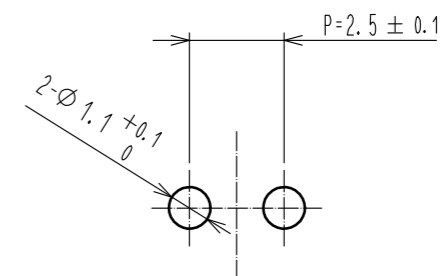


Jun.1.2019 Copyright 2019 HIROSE ELECTRIC CO., LTD. All Rights Reserved.
In case of consideration for using Automotive equipment / device which demand high reliability, kindly contact our sales window correspondents.

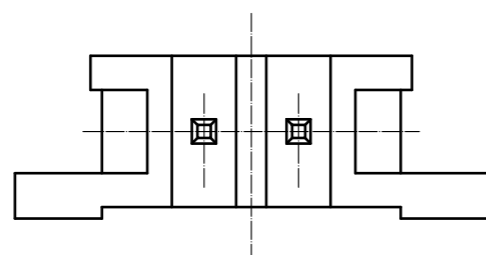


Recommended pattern(5:1)
(Recommended Board thickness t=1.6mm)



HRS DRAWING FOR REFERENCE

Note 1 : Unit of purchase shall be 100 connectors.



1	BRASS	SURFACE:GOLD PLATED 0.3µm min UNDER PLATING:NICKEL PLATED 1µm min	2	POLYAMIDE	BLACK, UL94V-2			
NO.	MATERIAL	FINISH . REMARKS	NO.	MATERIAL	FINISH . REMARKS			
UNITS mm		SCALE 5 : 1		COUNT	DESCRIPTION OF REVISIONS	DESIGNED	CHECKED	DATE
HRS HIROSE ELECTRIC CO., LTD.		APPROVED : KI. AKIYAMA	15.08.18	DRAWING NO. EDC-007942-05-00				
		CHECKED : TS. FUKUSHIMA	15.08.18	PART NO. HNC2-2.5P-2DS(05)				
		DESIGNED : YK. YAMAGUCHI	15.08.18	CODE NO. CL218-0012-4-05				
		DRAWN : MI. SAKIMURA	15.08.17					