

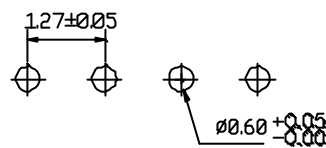
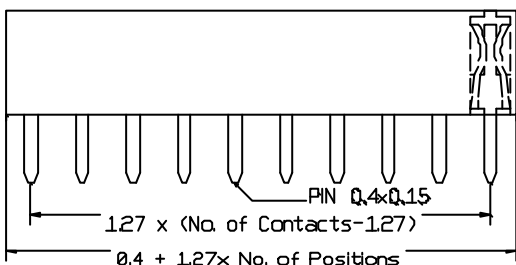
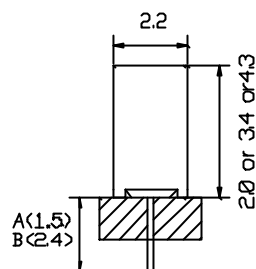
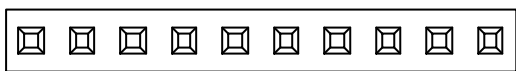
CFD04 1.27mm FEMALE HEADER, STRAIGHT TYPE

Pitch:1.27mm
Profile:2.0mm, 3.4mm, 4.3mm

SPECIFICATION

Current Rating: 1.5 Amp
 Insulation Resistance: 2000 Megohms min
 Contact Resistance: 20 m ohms Max
 Dielectric Withstanding: AC 500 V
 Operating Temperature: -40 ° C to +105° C
 Contact Material: Phosphor Bronze
 Insulator Material: Polyester, UL 94V-0
 © Standard JCP

RoHS compliant



Recommended P.C.Board Hole Layout

HOW TO ORDER

CFD04 - [X] - [X] - [X] - [X] - [X]

NO. OF CONTACT	CONTACT PLATING	SPECIAL FUNCTION	PIN LENGHT	CODE PACKING
02 TO 40	A : Gold flash B : 10u*Gold C : 15u*Gold D : 30u*Gold T : Tin Plated Duplex Plating H : Gold flash/Tin © Standard: A	A: Profile 2.0mm B: Profile 3.4mm C: Profile 4.3mm	A: 1.5mm B: 2.4mm	A:Tube B:Tray