

D

C

B

A

4

4

3

3

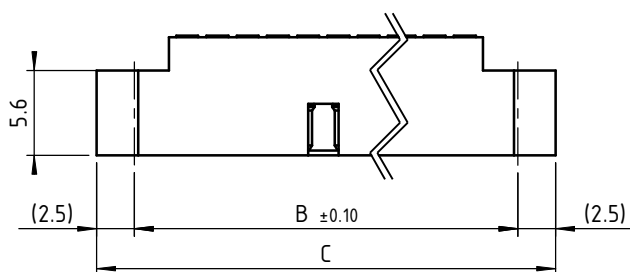
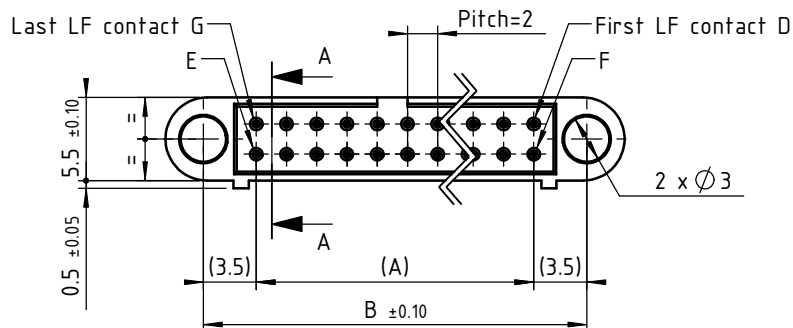
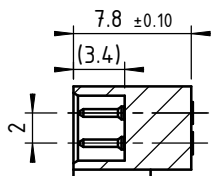
2

2

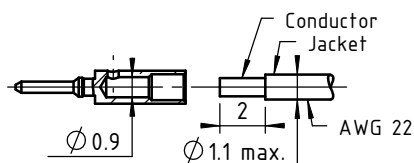
1

1

CUT A-A



LF contact 12960
type "C" to crimp
or to solder
scale : 3:1



TECHNICALS FEATURES

MATERIAL

INSULATOR : Special PPS (Polyphenylene Sulfide Fibreglass filled thermoplastic) UL 94-V0

- Radiation resistance
- No humidity absorption
- Oxygen free

Note : PPS characteristics are recognized for space applications

CRIMPING SIGNAL CONTACTS :

Male :

- Body Copper alloy / Ni + Au 1µ

ELECTRICAL for LF Contacts

- All contacts 3 A max. @ 25°C
2.2 A max. @ 85°C
- Working voltage (sea level) Tested at 800 V DC
- Proof voltage Tested at 1200 V DC
- Contact resistance (initially) max. 10 mΩ
- Insulation resistance 1000 MΩ min

MECHANICAL for LF Contacts

- Mechanical operations 500 cycles min. up to 2500.
- Contact insertion and withdrawal force 2 N max. / 0.2 N min. per contact
- Contact retention in insulator 10 N min.
- Contact replacement in insulator 3 cycles

ENVIRONMENTAL

- Temperature range From -60°C to +260°C
- Vibration severity 0.75mm, 10 g RMS 6 hours long random with superimposed sinusoid. No intermencies measured when using an H.S.L.I. (High Speed Logic Interrupt) detector with a trip threshold of 2 ns. 100g for 6 ms.
- Shock severity HcFc 141 bMGX (ATOCHEM) solvent
- Solvent resistance 96 hrs
- Salt spray test 56 days @ 90% humidity
- Humidity test



CONNECTOR SERIES 220 MALE

LF contacts number mm	Distance in mm between axes			Length in mm	LF contacts reference mark number								
	A	B	C		D	E	F	G					
04	2	9	14	1	2	3	4						
06	4	11	16	1	3	4	6						
08	6	13	18	1	4	5	8						
10	8	15	20	1	5	6	10						
12	10	17	22	1	6	7	12						
14	12	19	24	1	7	8	14						
16	14	21	26	1	8	9	16						
18	16	23	28	1	9	10	18						
20	18	25	30	1	10	11	20						
22	20	27	32	1	11	12	22						
24	22	29	34	1	12	13	24						
26	24	31	36	1	13	14	26						
28	26	33	38	1	14	15	28						
30	28	35	40	1	15	16	30						
32	30	37	42	1	16	17	32						
34	32	39	44	1	17	18	34						
36	34	41	46	1	18	19	36						
38	36	43	48	1	19	20	38						
40	38	45	50	1	20	21	40						
42	40	47	52	1	21	22	42						
44	42	49	54	1	22	23	44						
46	44	51	56	1	23	24	46						
48	46	53	58	1	24	25	48						
50	48	55	60	1	25	26	50						
52	50	57	62	1	26	27	52						
54	52	59	64	1	27	28	54						
56	54	61	66	1	28	29	56						
58	56	63	68	1	29	30	58						
60	58	65	70	1	30	31	60						

Tools recommended for LF contacts

Crimping following cable instruction ICLF01	
LF contacts insertion & withdrawal tool	C12935
Daniels MH800 hand crimp tool	MH800
Positioner K1692 for Daniels MH800 tool	C12929
AWG22 crimp tool setting	Position 6



www.nicomatic.com
Mail : nicomatic@nicomatic.fr
Tel : +33 (0)4.50.36.13.85

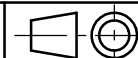
2	27/04/11	N.P.		E.M.
Iss	Date	Drawn	Checked	Approved

Item : Connector CMM220 male on cables
AWG22, nn LF contacts, without fixing

Folder : X:\Méthodes\Plans clients\Plans clients 2D\10 - CMM220\Connecteurs mâles\221C\221CnnFxx cl

This document and drawings, sketches, and schematic drawings are the property of the NICOMATIC company, and no parts thereof may be reproduced and used without the written consent of the owner. Law dated 11.03.1902

Catalogue Reference : 221CnnFxx



General tolerance	±0.2	Scale	2:1	Page	1/1
-------------------	------	-------	-----	------	-----

D

A4