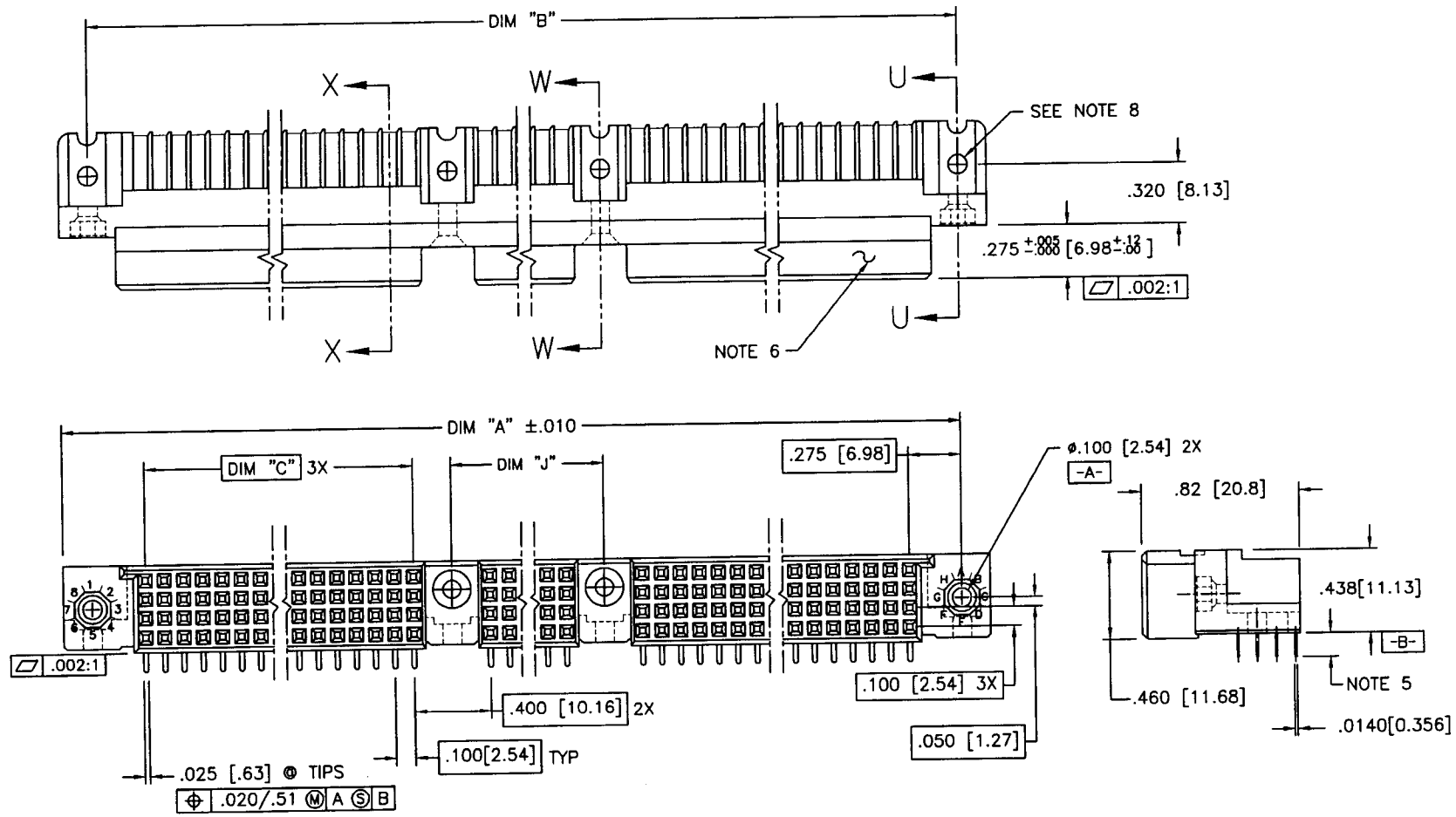


Tous droits strictement réservés. Reproduction ou communication à des tiers interdite sous quelque forme que ce soit sans autorisation écrite du propriétaire. Propriété de c FCI. Droits de reproduction FCI.

All rights strictly reserved. Reproduction or issue to third parties in any form whatever is not permitted without written authority from the proprietor. Property of FCI. Copyright FCI.



PRODUCT NUMBER  
SEE NOTE 1



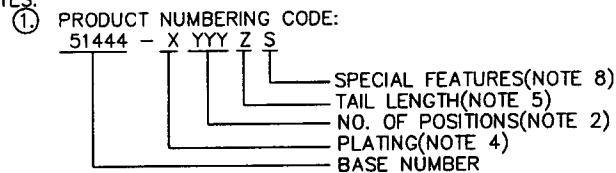
mat'l. code NOTE 3				tolerances unless otherwise specified				CUSTOMER COPY		<b>Electronics</b> www.fciconnect.com	
ltr	ecn no	dr	date	linear	.XX±.01/.XX±.3		projection	title			
A	V80316	MSC	2/20/98	linear	.XXX±.005/.XX±.13			4 ROW R/A TT RECEPTACLE			
B	V80732	HTB	4/16/98	angles	.XXX±.0020/.XXX±.051			SOLDER TO BOARD 2 G.P.			
C	V00260	JWS	1/25/00	angles	0° ±2'		INCH/MM	product family	HPC		code
D	V01359	CGD	6/28/00	dr	M. CLOUSER	2/20/98	scale	size	dwg no		sheet
				engr	J. BROWN	2/20/98	1:1	A	51444		1 of 3
				chr	J. BROWN	2/20/98					
				appd	J. BROWN	2/20/98					
sheet index	revision sheet	D	D	D							
		1	2	3							

cage code  
22526

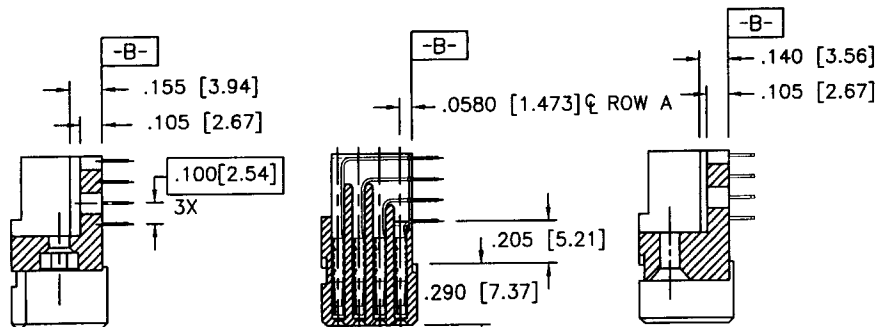
ACAD

PRODUCT NUMBER	DIM.	LENGTH FORMULAS
SEE NOTE 1	DIM A	.100/2.54 X NO. OF COLUMNS + 1.35/34.3
	DIM B	.100/2.54 X NO. OF COLUMNS + 1.050/26.67
	DIM C	.100/2.54 X NO. OF COLUMNS DIVIDED BY 3 - .100/2.54
	DIM J	.100/2.54 X NO. OF COLUMNS DIVIDED BY 3 + .300/7.62

NOTES:



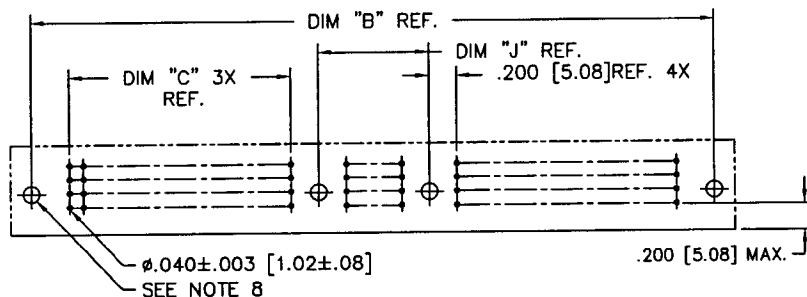
- ② THIS PRODUCT IS CONFIGURED IN SIZES OF 30 thru 150 COLUMNS IN INCREMENTS OF THREE.  
i.e.: 30,33,36,39.....147,150.
- ③ HOUSING MATERIAL: GLASS AND MINERAL FILLED HIGH TEMP. THERMO PLASTIC. FLAME RETARDANT PER UL94V-0.  
COLOR: BLACK.  
CONTACT MATERIAL: BeCu
- ④ CONTACT AREA PLATING OPTIONS:  
 1 = 30u"/.76u GOLD  
 3 = 50u"/1.27u GOLD  
 5 = 30u"/.76u GXT  
 ALL SOLDER TAILS TIN/LEAD
- ⑤ TAIL LENGTH OPTIONS:  
 E = .125±.010 / 3.18±.25  
 F = .145±.010 / 3.68±.25
- ⑥ MANUFACTURE'S NAME, PART NUMBER AND LOT CODE TO APPEAR ON THIS SURFACE PER BUS-12-108.
- 7. FOR DOCUMENTATION MENU, SEE SPEC. BUS-01-057.
- ⑧ SPECIAL FEATURES: (SEE SHEET 3)  
 - = IF CODE IS OMITTED FROM PRODUCT NO.; CONNECTOR IS PROVIDED AS SHOWN, NO SPECIAL FEATURES ARE SELECTED. FOR P.C.B. ATTACHMENT IN A .120 [3.05] MOUNTING HOLE.  
 "A" = IF SPECIFIED, PRE-INSTALLED CLAW FOR P.C.B. ATTACHMENT IN A Ø.100 MOUNTING HOLE. (AVAILABLE IN "E" TAIL LENGTH ONLY).  
 "B" = IF SPECIFIED, PRE-INSTALLED CLAW FOR P.C.B. ATTACHMENT IN A Ø.120 MOUNTING HOLE.  
 "C" = IF SPECIFIED, MOLDED GUIDE PINS w/CLAW FOR P.C.B. ATTACHMENT IN A Ø.120 MOUNTING HOLE.  
 "D" = IF SPECIFIED, MOLDED GUIDE PINS w/Ø.120 MOUNTING HOLE. (NO CLAW)
- ⑨ CLAW DIMENSION DETERMINED BY P.C.B. HOLE DIAMETER.



SECTION U-U  
NO SPECIAL FEATURE

SECTION X-X

SECTION W-W  
NO SPECIAL FEATURE



RECOMMENDED PCB LAYOUT  
(ALL HOLES LOCATED ON .100 [2.54] GRID UNLESS OTHERWISE SPECIFIED)

mat'l. code				tolerances unless otherwise specified		CUSTOMER COPY		 www.fciconnect.com	
ltr	ecn no	dr	date	linear	.XX±.01/.X±.3	projection	title		
D					.XXX±.005/.XX±.13		4 ROW R/A TT RECEPTACLE		
				angles	.XXX±.0020/.XXX±.051		SOLDER TO BOARD 2 G.P.		
				dr	M. CLOUSER 2/20/98	INCH/MM	product family	HPC	
				enr	J. BROWN 2/20/98	scale	size	dwg no	code
				chr	J. BROWN 2/20/98	1:1	A	51444	213
				appd	J. BROWN 2/20/98				sheet
sheet index	revision sheet								2 of

cage code  
22526

Tous droits strictement reserves. Reproduction ou communication a des tiers interdite sous quelque forme que ce soit sans autorisation écrite du propriétaire. Propriete de c FCI. Droits de reproduction FCI.

All rights strictly reserved. Reproduction or issue to third parties in any form whatever is not permitted without written authority from the proprietor. Property of FCI. Copyright FCI.

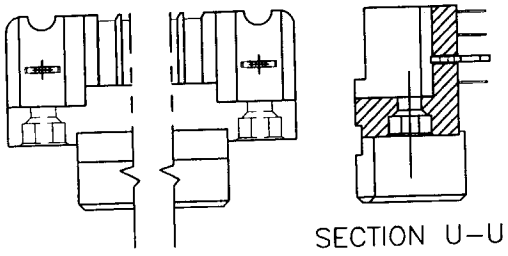
1 | 2

3 |

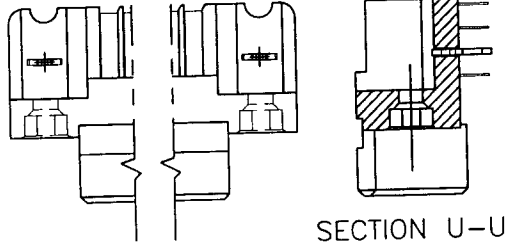
4

PRODUCT NUMBER  
SEE NOTE 1

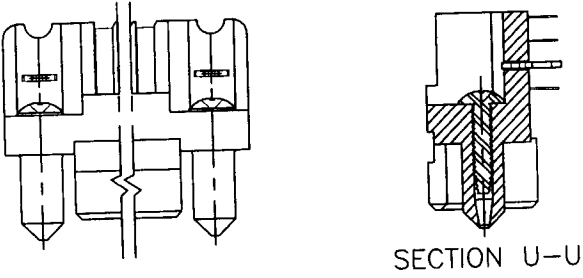
SPECIAL FEATURE OPTION A



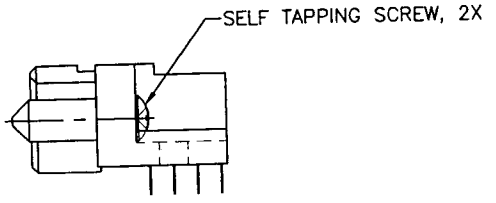
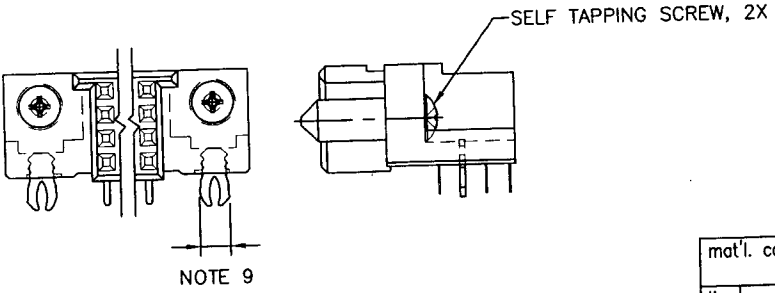
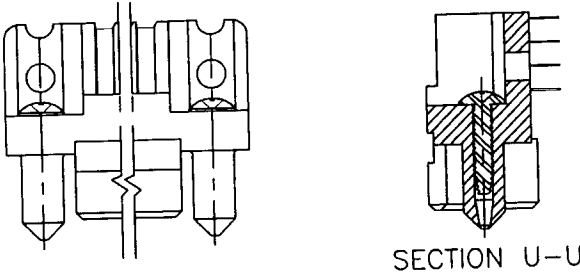
SPECIAL FEATURE OPTION B



SPECIAL FEATURE OPTION C



SPECIAL FEATURE OPTION D



mat'l. code				tolerances unless otherwise specified		CUSTOMER COPY		 www.fciconnect.com	
ltr	ecn no	dr	date	linear	.XX±.01/.X±.3	projection	 INCH/MM	title	
D					.XXX±.005/.XX±.13			4 ROW R/A TT RECEPTACLE	
				angles	.XXX±.0020/.XXX±.051	 N.T.S.	SOLDER TO BOARD, 2 G.P.		213
				dr	C.DAILY 6/28/00		product family HPC		
				engr	M. GRAY 6/28/00	size dwg no		3 of	
				chr	M. GRAY 6/28/00	A 51444			
				appd	M. GRAY 6/28/00	scale			
sheet	revision								
index	sheet								
								cage code	
								22526	

Tous droits strictement reserves. Reproduction ou communication a des tiers interdite sous quelque forme que ce soit sans autorisation écrite du propriétaire. Propriete de c FCI. Droits de reproduction FCI.

All rights strictly reserved. Reproduction or issue to third parties in any form whatever is not permitted without written authority from the proprietor. Property of FCI. Copyright FCI.



1 | 2

3 |

4

ACAD

PDM: Rev:D

STATUS: Released

Printed: Sep 27, 2003