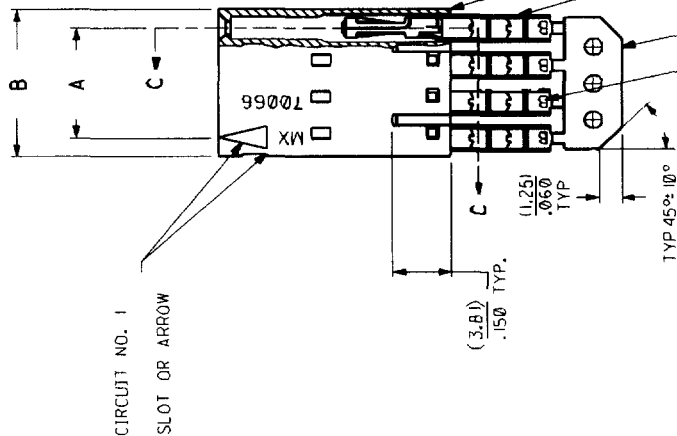
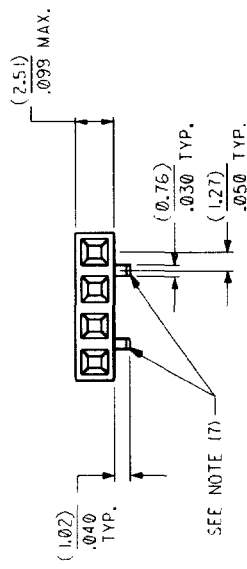


**NOTES:**

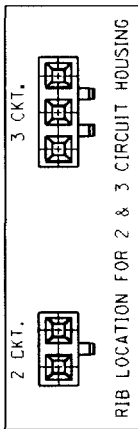
- 1) TO BE USED WITH (26) AWG, STRANDED WIRE WITH (1.35)/.053 DIA. MAX. INSULATION.
- 2) SEE CHART FOR CIRCUIT SIZES.
- 3) STANDARD PACKAGING PER PK-70073-0001. OPTIONAL PACKAGING MAY BE AVAILABLE, REQUEST DWG. PK-70400
- 4) PARTS STACKABLE END TO END ON (2.54)/.100 CENTERS.
- 5) REFER TO PRODUCT SPECIFICATION: PS-70400.
- 6) SEE DWG. SDA-70400-\*\*\* (SHT. 5) FOR OPTIONAL HOUSING DETAILS.
- 7) 4 CIRCUIT SHOWN, 3 - 25 CKT'S. HAVE (2) RIBS. TO MATE WITH MOLEX PART NO.S: 70004-\*\*\*\*, 70013-\*\*\*\*
- 9) 2 CIRCUIT ASSEMBLIES SUPPLIED AS GROUPED PAIRS.

**OPTION D**

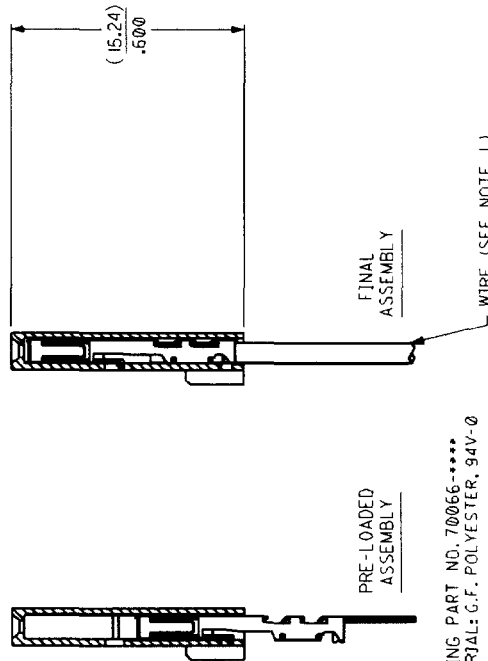


I.D. SLOT CODE TO WIRE GAUGE CHART	
I.D. SLOT CODE	B
WIRE GAUGE	26 AWG.

PLATING CODE (STRIP ON CARRIER STRIP)	
PLATING	596
COLOR	NONE



**SECTION C-C**



596 - .000050 MIN. GOLD IN SELECT AREA WITH .000075 MIN. TIN/LEAD (90/10) IN SELECT AREA OVER .000050 MIN. NICKEL OVER-ALL.

CKT. SIZE	A	B	EDP. NO.	ENG. NO.
2	(2.54) 1.00	(5.05) .199	14-60-5023	A-70400-4050
3	(5.08) 2.00	(7.59) .299	14-60-5033	A-70400-4051
4	(7.62) .300	(10.13) .399	14-60-5043	A-70400-4052
5	(10.16) .400	(12.67) .499	14-60-5053	A-70400-4053
6	(12.70) .500	(15.21) .599	14-60-5063	A-70400-4054
7	(15.24) .600	(17.75) .699	14-60-5073	A-70400-4055
8	(17.78) .700	(20.29) .799	14-60-5083	A-70400-4056
9	(20.32) .800	(22.83) .899	14-60-5093	A-70400-4057
10	(22.86) .900	(25.37) .999	14-60-5103	A-70400-4058
11	(25.40) 1.000	(27.91) 1.099	14-60-5113	A-70400-4059
12	(27.94) 1.100	(30.45) 1.199	14-60-5123	A-70400-4060
13	(30.48) 1.200	(32.99) 1.299	14-60-5133	A-70400-4061
14	(33.02) 1.300	(35.53) 1.399	14-60-5143	A-70400-4062
15	(35.56) 1.400	(38.07) 1.499	14-60-5153	A-70400-4063
16	(38.10) 1.500	(40.61) 1.599	14-60-5163	A-70400-4064
17	(40.64) 1.600	(43.15) 1.699	14-60-5173	A-70400-4065
18	(43.18) 1.700	(45.69) 1.799	14-60-5183	A-70400-4066
19	(45.72) 1.800	(48.23) 1.899	14-60-5193	A-70400-4067
20	(48.26) 1.900	(50.77) 1.999	14-60-5203	A-70400-4068
21	(50.80) 2.000	(53.31) 2.099	14-60-5213	A-70400-4069
22	(53.34) 2.100	(55.85) 2.199	14-60-5223	A-70400-4070
23	(55.88) 2.200	(58.39) 2.299	14-60-5233	A-70400-4071
24	(58.42) 2.300	(60.93) 2.399	14-60-5243	A-70400-4072
25	(60.96) 2.400	(63.47) 2.499	14-60-5253	A-70400-4073

DIMENSIONS SHOWN UNLESS OTHERWISE SPECIFIED UNLESS OTHERWISE SPECIFIED (UNLESS OTHERWISE SPECIFIED)		MFG. S/L REV.	
ADD CARRIER CHAMF EON #JDI1938-0200 05/20/98 LMCGRATH		ASSEMBLY, SL CONNECTOR (SINGLE ROW - (2.54)/.100 GRID)	
FINAL RELEASE PER EPO # 39958 00-20-90 BUS/DOJ		MOLEX INCORPORATED PART NO. 596 MFG. S/L 10F1 DATE 106/20/90	
REVISIONS		SEE CHART SDA-70400-4050-4073	
LTR.	REVISIONS	LTR.	REVISIONS