

SPECIFICATIONS

D-SUB Connector

Mechanical

Contact Retention Force: 1.82kg (4.00Lb) min.
Contact Engagement Force: 0.34kg (0.75Lb) max.
Contact Separation Force: 0.021kg (0.05Lb) min.
Durability: 500 Cycles

DV Series

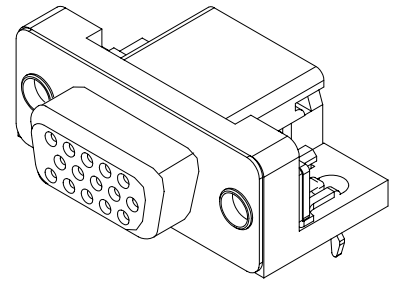
Right Angle, T/H Type
2.29mm [.090"] Pitch
15 Pos.

Electrical

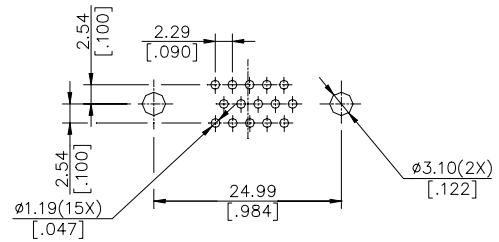
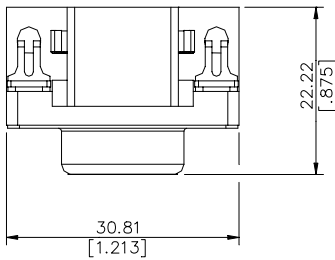
Current Rating: 2A
Contact Resistance: 15mΩ max.
Dielectric Withstanding Voltage: 1000V AC/1min min.
Insulation Resistance: 5000MΩ min.

Physical

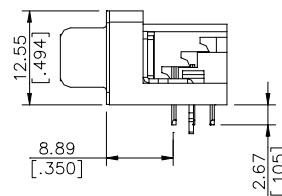
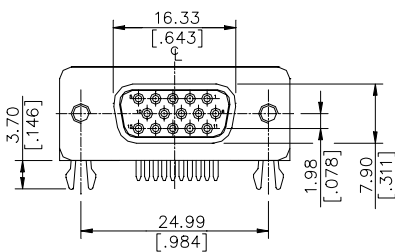
Housing: Thermoplastic, UL 94V-0 rated in Blue 285C Color
Contact: Copper alloy
Plating: See "ORDERING INFORMATION"
Operating Temperature: -20°C to +85°C
Recommended Thickness of PCB: 1.57[.062]



DRAWING



RECOMMENDED P.C.B. LAYOUT



ORDERING INFORMATION

PRODUCT NO.: DV 1 1 2 0 * - ***

VGA Series

Body Type

1=Right Angle PCB Mount

Termination Type

1=Female

NO. of Pos.

2=H/D 15 Pos.

Body Length

0=8.89

Extension Code

Contact Area Plating

1=Gold Flash
 2=20u" Gold
 3=30u" Gold
 6=10u" Gold
 7=15u" Gold
 F=Gold Flash(Lead Free)

DV1120*-FB2	HIGH TEMPERATURE
DV1120*-B2	LOW TEMPERATURE
P/N	PLASTIC CHARACTER