

HIGH VOLTAGE RECTIFIER STACKS

TYPE NUMBER	PEAK INVERSE VOLTAGE	MAX. AVG. DC OUTPUT CURRENT ①		MAXIMUM PEAK FORWARD VOLTAGE (PULSED)		MAXIMUM REVERSE CURRENT @ PIV		PEAK 1-CYCLE SURGE CURRENT	MAXIMUM REVERSE RECOVERY TIME ②	PACKAGE LENGTH (TABLE A)	PKG. STYLE
		Amps		V	A	μAmps					
		55°C	100°C			25°C	100°C				
Volts							Amps	nsec	Inches		
SSCHE4000	4000	.25	.13	10	0.2	10	100	20	70	1.125	418
SSCHE6000	6000	.25	.13	15	0.2	10	100	20	70	1.625	
SSCHE8000	8000	.25	.13	20	0.2	10	100	20	70	2.000	
SSCHE10000	10000	.25	.13	25	0.2	10	100	20	70	2.375	
SSCHE11000	11000	.25	.13	30	0.2	10	100	20	70	2.750	
SSCHE15000	15000	.25	.13	40	0.2	10	100	20	70	3.500	
SSCHE20000	20000	.25	.13	50	0.2	10	100	20	70	4.250	
SSCF2500	2500	0.5	0.33	6.0	0.5	1.0	25	25	150	1.125	
SSCF5000	5000	0.5	0.33	12	0.5	1.0	25	25	150	2.000	
SSCF7500	7500	0.5	0.33	18	0.5	1.0	25	25	150	2.750	
SSCF10000	10000	0.5	0.33	24	0.5	1.0	25	25	150	3.500	
SSCF12500	12500	0.5	0.33	30	0.5	1.0	25	25	150	4.250	
SSCH5000	5000	0.5	0.33	7.0	0.5	0.1	15	50	5000	1.125	
SSCH7500	7500	0.5	0.33	10	0.5	0.1	15	30	5000	1.625	
SSCH10000	10000	0.5	0.33	14	0.5	0.1	15	50	5000	2.000	
SSCH12500	12500	0.5	0.33	17	0.5	0.1	15	50	5000	2.375	
SSCH15000	15000	0.5	0.33	20	0.5	0.1	15	50	5000	2.750	
SSCH20000	20000	0.5	0.33	27	0.5	0.1	15	50	5000	3.500	
SSCH25000	25000	0.5	0.33	33	0.5	0.1	15	50	5000	4.250	
SSCHS2500	2500	2.0	1.2					80		1.53	
SSCHS5000	5000	2.0	1.2					80		2.53	
SSCHS7500	7500	2.0	1.2					80		3.53	
SSCHS10000	10000	2.0	1.2					80		4.53	
SSCHS12500	12500	2.0	1.2					80		5.53	
SSCHS15000	15000	2.0	1.2					80		6.63	

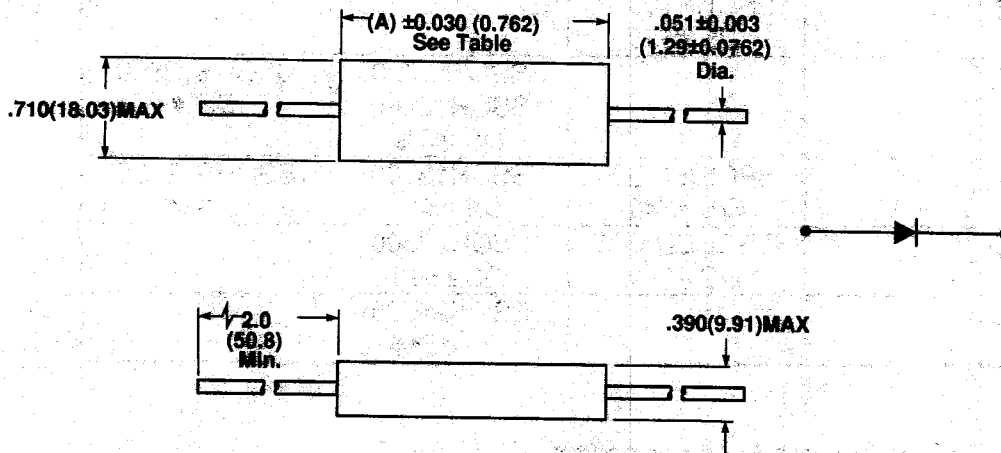


FIG. 418

**30 nsec devices available upon request**

**Notes:**

- All ratings are at  $T_A = 25^\circ\text{C}$  unless otherwise specified.
- Maximum operating and storage temperature range  $-55^\circ\text{C}$  to  $+150^\circ\text{C}$ .
- ① When operating in oil, the output current capabilities are doubled.
- ② Reverse recovery time conditions:  $I_T = 0.5\text{A}$ ,  $I_R = 1.0\text{A}$   $t_{rr}$  measured when rectifiers recovers to 0.25 Amps.
- Case material: Molded epoxy.

Most devices are available in other Voltage and/or current ratings. Please contact the factory or a Sensitron Sales Representative for details