

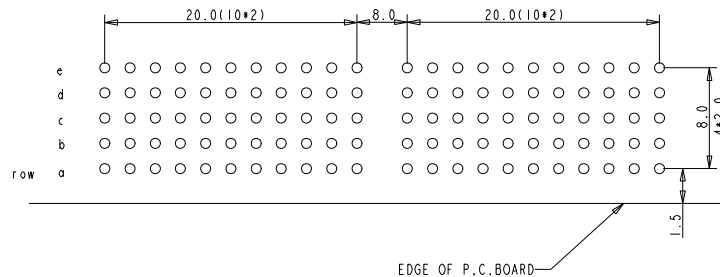
PERFORMANCE CHARACTERISTICS

CURRENT RATING: 1.5 A AT 20°C (FULLY LOADED)
1 A AT 70°C (FULLY LOADED)

RATED VOLTAGE: 500 V AC (CONT /CONT)
OPERATING TEMPERATURE : -55°C TO 125°C
CONTACT RESISTANCE : 20 mΩ MAX
INSERTION FORCE : 0.75N MAX/CONT
EXTRACTION FORCE : 0.15N MIN /CONT
INSULATION RESISTANCE: 10⁴MΩ MIN

NOTES

1. "C" PERFORMANCE LEVEL INDICATOR (REF DWG NO.BS,C ,201844,003)
2. THIS PRODUCT IS CSA APPROVED. THIS PRODUCT IS UL RECOGNIZED.
3. FOR RECOMMENDED PTH DIMENSIONS REFER DRAWING :BS.A .201572.001
4. THE PRODUCT (C) MEETS EUROPEAN UNION DIRECTIVES AND OTHER COUNTRY REGULATIONS AS DESCRIBED IN GS-22-008 EXCEPT FOR LEAD.



Material		Spec ref	
Mat code	tolerance	projection	MM
Heatreat	✓ IDEC ±0.2 IDEC 2DEC ±0.1 2DEC ANGLES ±1°HOEKEN		
Plating/Finish			
Dr Kason Iuo 05-08-05	Product family MILLIPACS	size	Scale
Eng Collins lu 05-08-05	Model Name HM2R10PA5100	AI	5.000
Chr Victor lin 05-08-05	Model Revision	ECN DG05-0262	
Appr Joseph Hsia 05-08-05		REL Level	
	title	Rev.	
	MPACS 5+2R RA RCP CONN TYPE A (CISCO)	A	
	part no	BSC201419025	

rev	ecn no	dr	date
A	DG05-0262	Kason	05-08-05
-	-	-	-
-	-	-	-
-	-	-	-

GEN. ST.	01	02	03	04	05	06	07	08	0D	50	60	70	80	90																	
INT. ST.	10	11	12	13	14	18	20	31	32	33	34	38	39	40	42	43	44	45	46	48	56	70	72	73	75	76	81	82	83	84	88

REV.	DATE	DESCRIPTION	BY	C'K'D'
B	06-05-04	104-0029	ALEX B	BKP
C	14-01-05	105-0006	ALEX B	BKP
D	01-06-05	105-0083	ALEX B	BKP

MILLIPACS : CONTACT PLATING CODE OVERVIEW

HM2---P------(L-)(LF)

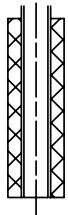
FOR LEAD FREE PLATING
 OPTIONAL (NOTE 1)
 PLATING CODE (DIGIT 13 AND 14)

PLATING CODE	CONTACT AREA		
L9	1.25 μ Au min over 1.3 μ Ni min.	MALE CONN.: SHORT / WIRE WRAP CONT. FEMALE CONNECTOR	
E9	1.00 μ Au min over 1.3 μ Ni min.	MALE CONN.: SHORT / WIRE WRAP CONT. FEMALE CONNECTOR	PERFORMANCE LEVEL 1 (500 mating cycles)
N9	0.80 μ Au min over 1.3 μ Ni min.	MALE CONN.: SHORT / WIRE WRAP CONT. FEMALE CONNECTOR	PERFORMANCE LEVEL 2 (250 mating cycles)
Z1	0.40 μ Au min over 1.3 μ Ni min.	MALE CONN.: SHORT / WIRE WRAP CONT. FEMALE CONNECTOR	PERFORMANCE LEVEL 3 (50 mating cycles)
NN	0.15 μ Au Average over 1.02 μ NiP Average.	MALE CONN.: SHORT / WIRE WRAP CONT. FEMALE CONNECTOR	
NEN	0.38 μ Au Average over 1.02 μ NiP Average.	MALE CONN.: SHORT / WIRE WRAP CONT. FEMALE CONNECTOR	
GE	1.25 μ Au min over 1.3 μ Ni min.	MALE CONN.: REAR PLUG-UP CONTACTS	
GL	1.00 μ Au min over 1.3 μ Ni min.	MALE CONN.: REAR PLUG-UP CONTACTS	PERFORMANCE LEVEL 1 (500 mating cycles)
GF	0.80 μ Au min over 1.3 μ Ni min.	MALE CONN.: REAR PLUG-UP CONTACTS	PERFORMANCE LEVEL 2 (250 mating cycles)
GC	0.40 μ Au min over 1.3 μ Ni min.	MALE CONN.: REAR PLUG-UP CONTACTS	PERFORMANCE LEVEL 3 (50 mating cycles)
GN	0.15 μ Au Average over 1.02 μ NiP Average. (Both Front & Rear Sides)	MALE CONN.: REAR PLUG-UP CONTACTS	
GEN	0.38 μ Au Average over 1.02 μ NiP Average. (Both Front & Rear Sides)	MALE CONN.: REAR PLUG-UP CONTACTS	

EUROPEAN

NOTE :

- 1) IN CASE OF STR HDR CONNECTORS :
 EXTENSIONS CAN BE ADDED TO THE PLATING CODE
 IF LUBRICATED CONTACTS ARE REQUIRED
 L : LUBRICATED
 L1: LUBRICATED TO MEET TELCORDIA GR-1217 CORE REQUIREMENTS
- 2) PLATING AT EON AREA
 LF : Sn MATT FINISH PLATING(0.05 μ Min)
 ALL OTHER PART NOS : SnPb PLATING(0.05 μ Min)



REF NOTE 2 FOR EON PLATING

1DEC \pm 0.2 2DEC \pm 0.1 ANGLES \pm 1° HOEKEN	APPR. DRAFT CHECKED	DATE 210303	SIGN. M.Fret	MPACS CONTACT PLATING OVERVIEW
WE RESERVE THE RIGHT TO CHANGE DIMENSIONS OR REQUIREMENTS WITHOUT PRIOR NOTICE.	PROD. MGR. PR. ENG. MGR. PR. MGT. MGR.			CAT. No. HM2---P------(L-)
ALL DIMENSIONS IN MM	REFERENCES / REFERENTIES			SCALE

FCI FCI MECHELEN N.V.
 A. SPINOYSTRAAT 8, 2800 MECHELEN

THIS IS OUR EXCLUSIVE PROPERTY. IT IS NOT TO BE COPIED, REPRINTED OR DISCLOSED TO A THIRD PARTY, NOR USED FOR MANUFACTURING WITHOUT OUR WRITTEN CONSENT, AND HAS TO BE RETURNED TO US IN CASE OF NO USAGE.
 DIT IS ONZE EIGENDOM EN MAG NIET NAAGEMAKT, HERDRUKT, OVERGEMAKT AN DERDEN, NOCH VOOR FABRIKATIE GEBRUIKT WORDEN, ZONDER ONZE SCHRIFTELIJKE TOELATING. BIJ NIET GEBRUIK IS TERUGZENDING VERPLICHT.