

Customer Information Sheet

DRAWING No.: M80-4XXXXXXXX-XX-XX-XX-XXX

SHEET 1 OF 3

IF IN DOUBT - ASK

(C)

NOT TO SCALE

THIRD ANGLE PROJECTION

ALL DIMENSIONS IN mm

MIX-TEK Part Number: M80-4XXXXXXXX-XX-XX-XX-XXX

Product Range _____
DATAMATE - M80 Series

Gender _____
4 = FEMALE

Signal Contact Style _____
00 = ZERO signal contacts
T1 = VERTICAL PC TAIL, 3mm tail
T2 = VERTICAL PC TAIL, 4.5mm tail
C1 = CRIMP 24-28 AWG (small bore)
D1 = CRIMP 22 AWG (large bore)
S1 = VERTICAL SURFACE MOUNT

Number of Signal Contacts _____
00-50 (must be EVEN number)

Signal contact Finish _____
00 = ZERO Signal Contacts
01 = GOLD + TIN/LEAD (PC Tail only)
05 = GOLD
42 = GOLD + 100% TIN

Jackscrew Variant _____
00 = NONE assembled
F1 = HEXAGONAL SLOTTED JACKSCREW
F2 = HEXAGONAL SOCKET JACKSCREW
F3 = GUIDE WITH BOARD MOUNT

No. of Special contacts BEFORE Signal Contact No.1 _____
00-12

Part No. of Special contact BEFORE Signal Contact No.1 _____
See Table on the Right

No. of Special contacts AFTER Signal Contact No.1 _____
00-12

Part No. of Special contact BEFORE Signal Contact No.1 _____
See Table on the Right

Special Contact Part No:

- 301 = COAX - FEMALE, Vertical PC Tail, 3.0mm tail
- 302 = COAX - FEMALE, Vertical PC Tail, 4.5mm tail
- 305 = COAX - FEMALE, Crimp Straight, Ø2.0mm cable
- 306 = COAX - FEMALE, Crimp Straight, Ø2.4mm cable
- 307 = COAX - FEMALE, Crimp Straight, Ø2.7mm cable
- 308 = COAX - FEMALE, Crimp/Solder 90°, Ø2.0mm cable
- 309 = COAX - FEMALE, Crimp/Solder 90°, Ø2.7mm cable

- 321 = POWER - FEMALE, Vertical PC Tail, 3.5mm tail
- 322 = POWER - FEMALE, Vertical PC Tail, 5.0mm tail
- 325 = POWER - FEMALE, Solder Straight, 12 AWG cable
- 326 = POWER - FEMALE, Solder Straight, 14 AWG cable
- 327 = POWER - FEMALE, Solder Straight, 16 AWG cable

Part No. where only Special Contact is required:

M80-XXX Replace XXX with the above 3-digit code

JMB	1	11.01.07	----
NAME	ISS.	DATE	C/NOTE
APPROVED: <i>[Signature]</i>			
CHECKED: <i>[Signature]</i>			
DRAWN:		JM BROOKES	
CUSTOMER REF.:			
ASSEMBLY DRG:			

HARWIN

HARWIN INC U.S.A. TEL: (812) 542 2540 FAX: (812) 542 2541	HARWIN PLC U.K. TEL: 023 9231 4545 FAX: 023 9231 4590	HARWIN PTE SINGAPORE TEL: 65 6779 4909 FAX: 65 6779 3868
--	--	---

THIS DRAWING AND ANY INFORMATION OR DESCRIPTIVE MATTER SET OUT HEREON ARE CONFIDENTIAL AND COPYRIGHT PROPERTY OF THE HARWIN GROUP AND MUST NOT BE DISCLOSED, LOANED, COPIED OR USED FOR MANUFACTURING, TENDERING OR FOR ANY OTHER PURPOSE WITHOUT THEIR WRITTEN PERMISSION.

TOLERANCES
X. = ±1mm
X.X = ±0.25mm
X.XX = ±0.10mm
X.XXX = ±0.01mm
ANGLES = ±5°
UNLESS STATED

MATERIAL: _____
FINISH: _____
S/AREA: _____ mm²

TITLE: DATAMATE FEMALE MIX-TEK (GENERIC DRAWING)
DRAWING NUMBER: M80-4XXXXXXXX-XX-XX-XX-XXX
SHT 1 OF 3

Customer Information Sheet

DRAWING No.: M80-4XXXXXXXX-XX-XX-XX-XXX SHT 2

IF IN DOUBT - ASK

©

NOT TO SCALE

THIRD ANGLE PROJECTION

ALL DIMENSIONS IN mm

SPECIFICATIONS:

MATERIAL:

MOULDING = GLASS-FILLED PPS, UL94V-0, BLACK
 JACKSCREW = STAINLESS STEEL
 CIRCLIP = STAINLESS STEEL

SIGNAL CONTACT:

CLIP = BERYLLIUM COPPER
 SHELL = BRASS

COAX CONTACT:

BODY & SLEEVE = BRASS
 INSULATOR(S) = PTFE
 INNER CONTACT = BERYLLIUM COPPER
 LATCHING COLLAR = BERYLLIUM COPPER

POWER CONTACT:

BODY = BRASS
 LATCHING COLLAR = BERYLLIUM COPPER

FINISH:

SIGNAL CONTACT (01 FINISH CODE):
 CLIP = 0.3µ GOLD / SHELL = 3.5-5.0µ TIN/LEAD

SIGNAL CONTACT (05 FINISH CODE):
 CLIP = 0.3µ GOLD / SHELL = 0.3µ GOLD

SIGNAL CONTACT (42 FINISH CODE):
 CLIP = 0.3µ GOLD / SHELL = 3.5-5.0µ 100% TIN

COAX CONTACT:

BODY, SLEEVE, INNER CONTACT = GOLD
 LATCHING COLLAR = NICKEL

POWER CONTACT:

BODY = GOLD
 LATCHING COLLAR = NICKEL

ELECTRICAL:

WORKING VOLTAGE = 120V AC/DC
 VOLTAGE PROOF = 360V AC/DC
 INSULATION RESISTANCE = 100 MΩ MIN

SIGNAL CONTACT:

CURRENT RATING AT 25°C = 3.0A MAX
 CURRENT RATING AT 85°C = 2.2A MAX
 CONTACT RESISTANCE = 25 mΩ MAX

COAX CONTACT:

FREQUENCY RANGE = 6GHz
 IMPEDANCE = 50Ω
 V.S.W.R. = 1.05 + (0.04 x FREQUENCY) GHz MAX
 CONTACT RESISTANCE = 6mΩ MAX
 INSULATION RESISTANCE = 10⁶MΩ @ 250V AC
 OPERATING VOLTAGE = 180V AC @ 500mA
 MAXIMUM VOLTAGE = 1,000V AC

POWER CONTACT:

CURRENT RATING = 20A
 CONTACT RESISTANCE = 6mΩ MAX

MECHANICAL:

DURABILITY = 500 OPERATIONS

SIGNAL CONTACT:

INSERTION FORCE = 2.8N MAX
 WITHDRAWAL FORCE = 0.2N MIN

COAX & POWER CONTACT:

INSERTION FORCE = 5.0N MAX
 WITHDRAWAL FORCE = 0.5N MIN

ENVIRONMENTAL:

TEMPERATURE RANGE = -55°C TO +125°C

NOTES:

1. FOR A COMPLETE TECHNICAL SPECIFICATION, INCLUDING CONTACT NUMBERING AND COAX CRIMPING INSTRUCTIONS, SEE COMPONENT SPECIFICATION C005XX (LATEST ISSUE).
2. PLEASE SEE INDIVIDUAL DRAWINGS FOR DIMENSIONS AND WIRING INFORMATION ON COAX AND POWER CONTACTS.
3. CRIMP AND CABLE SOLDER CONTACTS ARE SUPPLIED LOOSE, OTHER CONTACTS AND JACKSCREW VARIANTS ARE SUPPLIED ASSEMBLED.

SIGNAL CRIMP CONTACT NOTES:

1. RECOMMENDED WIRE TYPE = BS 3G 210 TYPE A, PTFE INSULATED. MAX INSULATION DIA = ϕ 1.10mm, STRIP WIRE BY 2mm.
2. RECOMMENDED HAND CRIMP TOOL = M22520/2-01 WITH POSITIONER T5747.
3. CONTACT INSERTION AND EXTRACTION TOOL = Z80-280.
4. FOR EXTRA CONTACTS, USE PART NUMBER M80-01100XX (LARGE BORE) OR M80-01300XX (SMALL BORE). WHERE XX = 01 FOR 100% TIN OR 05 FOR GOLD.
5. INSTRUCTION SHEETS ARE AVAILABLE.

COAX CABLE CONTACT NOTES:

1. STRAIGHT COAX CONTACT IS SUPPLIED AS A KIT OF PARTS: BODY, INSULATOR AND LATCHING COLLAR ARE PRE-ASSEMBLED AND SLEEVE AND INNER CONTACT ARE SEPARATE.
2. 90° COAX CONTACT IS SUPPLIED AS A KIT OF PARTS: INSULATOR, INNER CONTACT AND LATCHING COLLAR ARE PRE-ASSEMBLED, SLEEVE AND INSULATED END PLUG ASSEMBLY ARE SEPARATE.
3. RECOMMENDED HAND CRIMP TOOL FOR STRAIGHT COAX INNER CONTACT = Z80-292 WITH POSITIONER Z80-291.
4. RECOMMENDED HAND CRIMP TOOL AND DIE SET FOR COAX SLEEVE = Z80-293.
5. COAX (& POWER) CONTACT EXTRACTION TOOL = Z80-290
6. INSTRUCTION SHEETS ARE AVAILABLE.

JMB	1	11.01.07	----
NAME	ISS.	DATE	C/NOTE
APPROVED: <i>[Signature]</i>			
CHECKED: <i>[Signature]</i>			
DRAWN: JM BROOKES		CUSTOMER REF.:	
ASSEMBLY DRG:			

HARWIN			THIS DRAWING AND ANY INFORMATION OR DESCRIPTIVE MATTER SET OUT HEREON ARE CONFIDENTIAL AND COPYRIGHT PROPERTY OF THE HARWIN GROUP AND MUST NOT BE DISCLOSED, LOANED, COPIED OR USED FOR MANUFACTURING, TENDERING OR FOR ANY OTHER PURPOSE WITHOUT THEIR WRITTEN PERMISSION.	TOLERANCES X. = ±1mm X.X = ±0.25mm X.XX = ±0.10mm X.XXX = ±0.01mm ANGLES = ±5° UNLESS STATED	MATERIAL: FINISH: S/AREA: mm ²	TITLE: DATAMATE FEMALE MIX-TEK (GENERIC DRAWING)
HARWIN INC U.S.A. TEL: (812) 542 2540 FAX: (812) 542 2541	HARWIN PLC U.K. TEL: 023 9231 4545 FAX: 023 9231 4590	HARWIN PTE SINGAPORE TEL: 65 6779 4909 FAX: 65 6779 3868		DRAWING NUMBER: M80-4XXXXXXXX-XX-XX-XX-XXX	SHT 2 OF 3	

Customer Information Sheet

DRAWING No.: M80-4XXXXXXXX-XX-XX-XX-XX

SHEET 3 OF 3

IF IN DOUBT - ASK

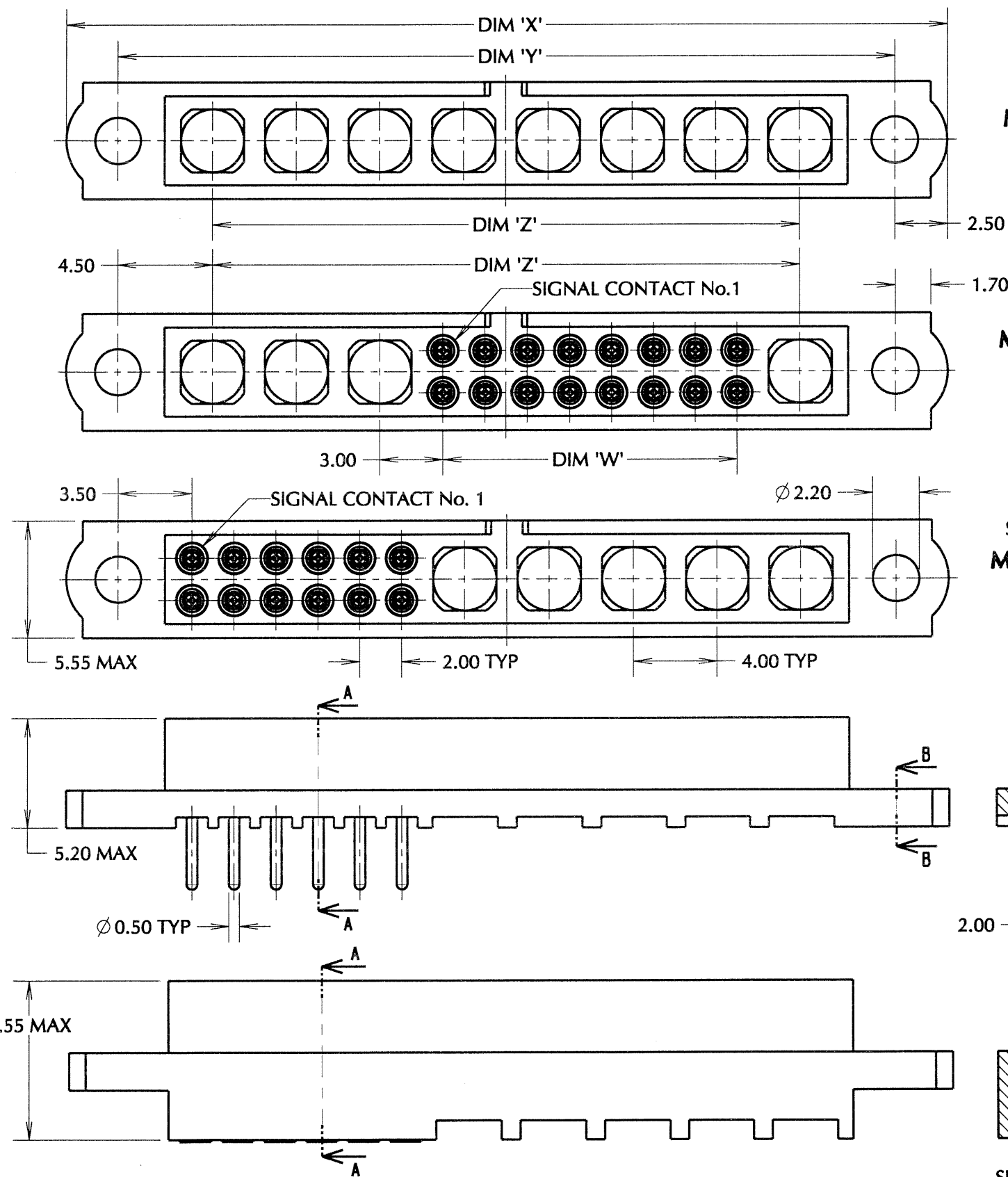
(C)

NOT TO SCALE

THIRD ANGLE PROJECTION

ALL DIMENSIONS IN mm

CONNECTOR DIMENSIONS



S = TOTAL NUMBER OF SIGNAL CONTACTS
T = TOTAL NUMBER OF SPECIAL CONTACTS

PART NUMBERS ARE EXAMPLES FOR THE LAYOUTS SHOWN

SPECIAL CONTACTS ONLY
M80-4000000XX-08-XXX-00-000

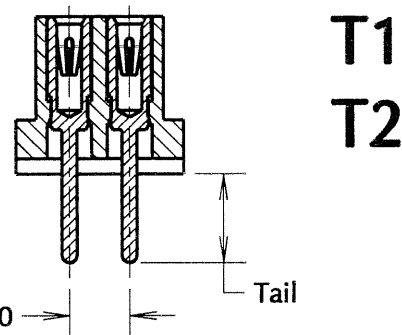
$$\begin{aligned} \text{DIM 'Z'} &= (T - 1) \times 4 \\ \text{DIM 'Y'} &= \text{DIM 'Z'} + 9 \\ \text{DIM 'X'} &= \text{DIM 'Y'} + 5 \end{aligned}$$

SPECIAL CONTACTS ON BOTH SIDES
M80-4XX16XXXX-03-XXX-01-XXX

$$\begin{aligned} \text{DIM 'W'} &= S - 2 \\ \text{DIM 'Z'} &= \text{DIM 'W'} + (T \times 4) - 2 \\ \text{DIM 'Y'} &= \text{DIM 'Z'} + 9 \\ \text{DIM 'X'} &= \text{DIM 'Y'} + 5 \end{aligned}$$

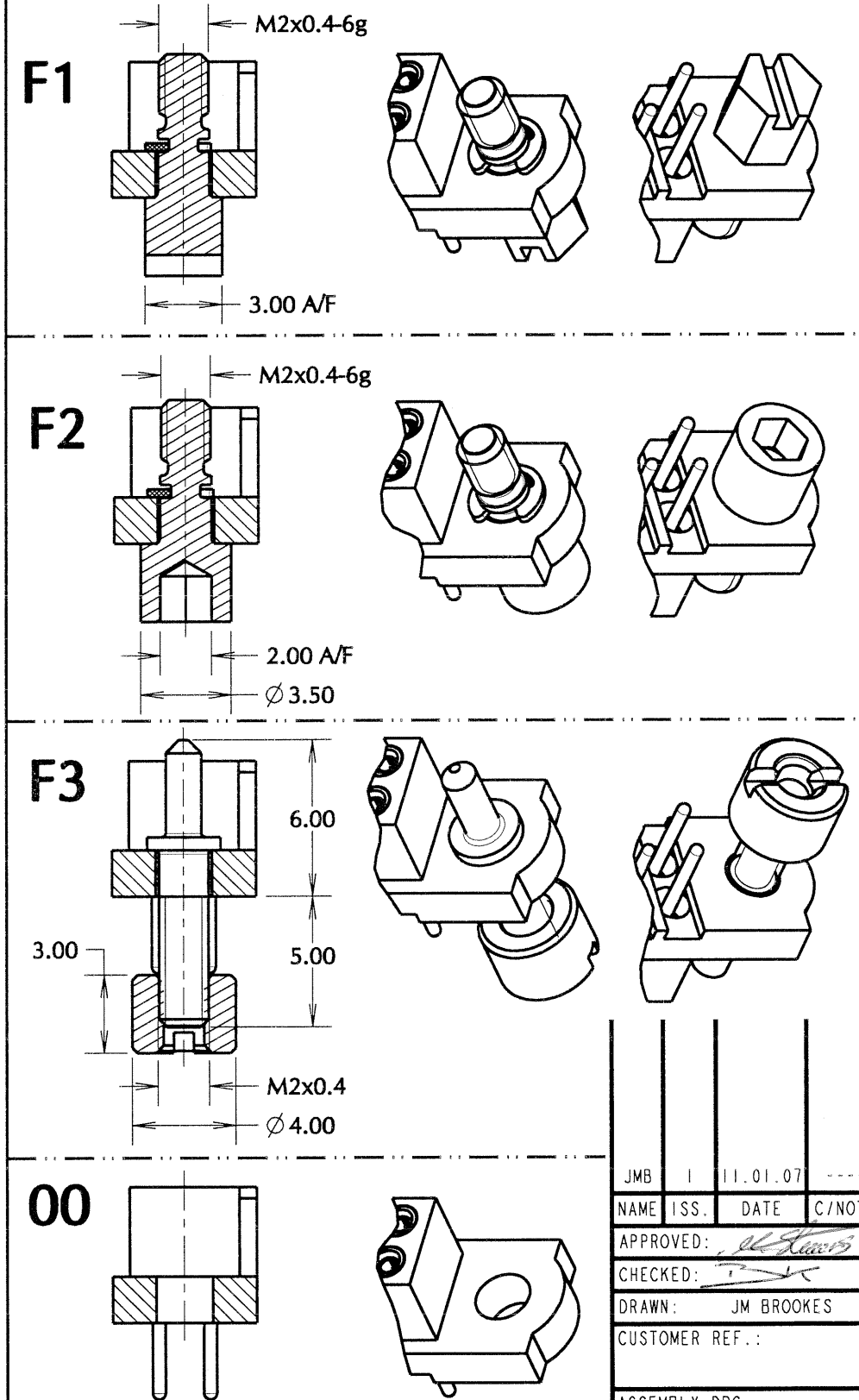
SPECIAL CONTACTS ON ONE SIDE
M80-4XX12XXXX-00-000-05-XXX

$$\begin{aligned} \text{DIM 'W'} &= S - 2 \\ \text{DIM 'Z'} &= \text{DIM 'W'} + (T \times 4) - 1 \\ \text{DIM 'Y'} &= \text{DIM 'Z'} + 8 \\ \text{DIM 'X'} &= \text{DIM 'Y'} + 5 \end{aligned}$$



SECTION A-A

JACKSCREW VARIANTS



JMB	1	11.01.07	----
NAME	ISS.	DATE	C/NOTE
APPROVED: <i>[Signature]</i>			
CHECKED: <i>[Signature]</i>			
DRAWN:		JM BROOKES	
CUSTOMER REF.:			
ASSEMBLY DRG:			

HARWIN

HARWIN INC U.S.A. TEL: (812) 542 2540 FAX: (812) 542 2541	HARWIN PLC U.K. TEL: 023 9231 4545 FAX: 023 9231 4590	HARWIN PTE SINGAPORE TEL: 65 6779 4909 FAX: 65 6779 3868
--	--	---

THIS DRAWING AND ANY INFORMATION OR DESCRIPTIVE MATTER SET OUT HEREON ARE CONFIDENTIAL AND COPYRIGHT PROPERTY OF THE HARWIN GROUP AND MUST NOT BE DISCLOSED, LOANED, COPIED OR USED FOR MANUFACTURING, TENDERING OR FOR ANY OTHER PURPOSE WITHOUT THEIR WRITTEN PERMISSION.

TOLERANCES
X. = ±1mm
X.X = ±0.25mm
X.XX = ±0.10mm
X.XXX = ±0.01mm
ANGLES = ±5°
UNLESS STATED

MATERIAL: SEE ABOVE
FINISH: SEE ABOVE
S/AREA: mm²

TITLE: DATAMATE FEMALE MIX-TEK (GENERIC DRAWING)
DRAWING NUMBER: M80-4XXXXXXXX-XX-XX-XX-XX
SHT 3 OF 3

Customer Information Sheet

DRAWING No.: M80-5XXXXXXXX-XX-XXX-XX-XXX

SHEET 1 OF 3

IF IN DOUBT - ASK

©

NOT TO SCALE

THIRD ANGLE PROJECTION

ALL DIMENSIONS IN mm

MIX-TEK Part Number: M80-5XXXXXXXX-XX-XXX-XX-XXX

Product Range

DATAMATE - M80 Series

Gender

5 = MALE

Signal Contact Style

- 00 = ZERO signal contacts
- T1 = VERTICAL PC TAIL, 3mm tail
- T2 = VERTICAL PC TAIL, 4.5mm tail
- L1 = HORIZONTAL PC TAIL, 3mm tail
- L2 = HORIZONTAL PC TAIL, 4.5mm tail
- C1 = CRIMP 24-28 AWG (small bore)
- D1 = CRIMP 22 AWG (large bore)
- S1 = VERTICAL SURFACE MOUNT
- S2 = HORIZONTAL SURFACE MOUNT

Number of Signal Contacts

00-50 (must be EVEN number)

Signal contact Finish

- 00 = ZERO Signal Contacts
- 05 = GOLD
- 22 = GOLD + TIN/LEAD (PC Tail only)
- 42 = GOLD + 100% TIN (PC Tail only)

Jackscrew Variant

- 00 = NONE assembled
- M1 = JACKSCREW NUT only
- M2 = JACKSCREW NUT with Vertical 3.5mm board mount stud
- M3 = JACKSCREW NUT with Vertical 5mm board mount stud
- M5 = JACKSCREW NUT with Horizontal 5mm board mount, slotted screw
- M7 = JACKSCREW NUT with Horizontal 5mm board mount, hex skt screw

Number of Special contacts BEFORE Signal Contact No.1

00-12

Part Number of Special contact BEFORE Signal Contact No.1

See Table on the Right

Number of Special contacts AFTER Signal Contact No.1

00-12

Part Number of Special contact BEFORE Signal Contact No.1

See Table on the Right

Special Contact Part No:

- 311 = COAX - MALE, Vertical PC Tail, 3.0mm tail
- 312 = COAX - MALE, Vertical PC Tail, 4.5mm tail
- 313 = COAX - MALE, Horizontal PC Tail, 3.0mm tail
- 314 = COAX - MALE, Horizontal PC Tail, 4.5mm tail
- 315 = COAX - MALE, Crimp Straight, Ø2.0mm cable
- 316 = COAX - MALE, Crimp Straight, Ø2.4mm cable
- 317 = COAX - MALE, Crimp Straight, Ø2.7mm cable
- 318 = COAX - MALE, Crimp/Solder 90°, Ø2.0mm cable
- 319 = COAX - MALE, Crimp/Solder 90°, Ø2.7mm cable

- 331 = POWER - MALE, Vertical PC Tail, 3.5mm tail
- 332 = POWER - MALE, Vertical PC Tail, 5.0mm tail
- 333 = POWER - MALE, Horizontal PC Tail, 3.5mm tail
- 334 = POWER - MALE, Horizontal PC Tail, 5.0mm tail
- 335 = POWER - MALE, Solder Straight, 12 AWG cable
- 336 = POWER - MALE, Solder Straight, 14 AWG cable
- 337 = POWER - MALE, Solder Straight, 16 AWG cable

Part No. where only Special Contact is required:

M80-XXX Replace XXX with the above 3-digit code

JMB	1	11.01.07	----
NAME	ISS.	DATE	C/NOTE
APPROVED: <i>[Signature]</i>			
CHECKED: <i>[Signature]</i>			
DRAWN: JM BROOKES		CUSTOMER REF.:	
ASSEMBLY DRG:			

HARWIN			<small>THIS DRAWING AND ANY INFORMATION OR DESCRIPTIVE MATTER SET OUT HEREON ARE CONFIDENTIAL AND COPYRIGHT PROPERTY OF THE HARWIN GROUP AND MUST NOT BE DISCLOSED, LOANED, COPIED OR USED FOR MANUFACTURING, TENDERING OR FOR ANY OTHER PURPOSE WITHOUT THEIR WRITTEN PERMISSION.</small>	TOLERANCES X. = ±1mm X.X = ±0.25mm X.XX = ±0.10mm X.XXX = ±0.01mm ANGLES = ±5° UNLESS STATED	MATERIAL: FINISH: S/AREA: mm ²	TITLE: DATAMATE MALE MIX-TEK (GENERIC DRAWING)	DRAWING NUMBER: M80-5XXXXXXXX-XX-XXX-XX-XXX	SHT 1 OF 3
HARWIN INC U.S.A. TEL: (812) 542 2540 FAX: (812) 542 2541	HARWIN PLC U.K. TEL: 023 9231 4545 FAX: 023 9231 4590	HARWIN PTE SINGAPORE TEL: 65 6779 4909 FAX: 65 6779 3868						

Customer Information Sheet

DRAWING No.: M80-5XXXXXXXX-XX-XXX-XX-XXX

SHEET 2 OF 3

IF IN DOUBT - ASK

(C)

NOT TO SCALE

THIRD ANGLE PROJECTION

ALL DIMENSIONS IN mm

SPECIFICATIONS:

MATERIAL:

MOULDING = GLASS-FILLED PPS, UL94V-0, BLACK
 JACKSCREW = STAINLESS STEEL

SIGNAL CONTACT:

PC TAIL CONTACT = PHOSPHOR BRONZE
 CRIMP CONTACT = BRASS

COAX CONTACT:

BODY & SLEEVE = BRASS
 INSULATOR(S) = PTFE
 INNER CONTACT (PC TAIL) = PHOSPHOR BRONZE
 INNER CONTACT (CRIMP) = BRASS
 LATCHING COLLAR = BERYLLIUM COPPER

POWER CONTACT:

BODY = BRASS
 LATCHING COLLAR = BERYLLIUM COPPER

FINISH:

SIGNAL CONTACT (05 FINISH CODE):
 PC TAIL CONTACT = 0.75µ GOLD ON CONTACT AREA,
 0.3µ GOLD ON TAILS

SIGNAL CONTACT (22 FINISH CODE):
 PC TAIL CONTACT = 0.75µ GOLD ON CONTACT AREA,
 3.0µ TIN/LEAD ON TAILS

SIGNAL CONTACT (42 FINISH CODE):
 PC TAIL CONTACT = 0.75µ GOLD ON CONTACT AREA,
 3.0µ 100% TIN ON TAILS

CRIMP CONTACT = 0.3µ GOLD

COAX CONTACT:

BODY, SLEEVE, INNER CONTACT = GOLD
 LATCHING COLLAR = NICKEL

POWER CONTACT:

BODY = GOLD
 LATCHING COLLAR = NICKEL

ELECTRICAL:

WORKING VOLTAGE = 120V AC/DC
 VOLTAGE PROOF = 360V AC/DC
 INSULATION RESISTANCE = 100 MΩ MIN

SIGNAL CONTACT:

CURRENT RATING AT 25°C = 3.0A MAX
 CURRENT RATING AT 85°C = 2.2A MAX
 CONTACT RESISTANCE = 25 mΩ MAX

COAX CONTACT:

FREQUENCY RANGE = 6GHz
 IMPEDANCE = 50Ω
 V.S.W.R. = 1.05 + (0.04 x FREQUENCY) GHz MAX
 CONTACT RESISTANCE = 6mΩ MAX
 INSULATION RESISTANCE = 10⁹MΩ @ 250V AC
 OPERATING VOLTAGE = 180V AC @ 500mA
 MAXIMUM VOLTAGE = 1,000V AC

POWER CONTACT:

CURRENT RATING = 20A
 CONTACT RESISTANCE = 6mΩ MAX

MECHANICAL:

DURABILITY = 500 OPERATIONS

SIGNAL CONTACT:

INSERTION FORCE = 2.8N MAX
 WITHDRAWAL FORCE = 0.2N MIN

COAX & POWER CONTACT:

INSERTION FORCE = 5.0N MAX
 WITHDRAWAL FORCE = 0.5N MIN

ENVIRONMENTAL:

TEMPERATURE RANGE = -55°C TO +125°C

NOTES:

1. FOR A COMPLETE TECHNICAL SPECIFICATION, INCLUDING CONTACT NUMBERING AND COAX CRIMPING INSTRUCTIONS, SEE COMPONENT SPECIFICATION C005XX (LATEST ISSUE).
2. PLEASE SEE INDIVIDUAL DRAWINGS FOR DIMENSIONS AND WIRING INFORMATION ON COAX AND POWER CONTACTS.
3. CRIMP AND CABLE SOLDER CONTACTS ARE SUPPLIED LOOSE, OTHER CONTACTS AND JACKSCREW VARIANTS ARE SUPPLIED ASSEMBLED.

SIGNAL CRIMP CONTACT NOTES:

1. RECOMMENDED WIRE TYPE = BS 3G 210 TYPE A, PTFE INSULATED. MAX INSULATION DIA = Ø 1.10mm, STRIP WIRE BY 2mm.
2. RECOMMENDED HAND CRIMP TOOL = M22520/2-01 WITH POSITIONER T5747.
3. CONTACT INSERTION AND EXTRACTION TOOL = Z80-280.
4. FOR EXTRA CONTACTS, USE PART NUMBER M80-19400XX (LARGE BORE) OR M80-19500XX (SMALL BORE). WHERE XX = 06 FOR 100% TIN OR 05 FOR GOLD.
5. INSTRUCTION SHEETS ARE AVAILABLE.

COAX CABLE CONTACT NOTES:

1. STRAIGHT COAX CONTACT IS SUPPLIED AS A KIT OF PARTS: BODY, INSULATOR AND LATCHING COLLAR ARE PRE-ASSEMBLED AND SLEEVE AND INNER CONTACT ARE SEPARATE.
2. 90° COAX CONTACT IS SUPPLIED AS A KIT OF PARTS: INSULATOR, INNER CONTACT AND LATCHING COLLAR ARE PRE-ASSEMBLED, SLEEVE AND INSULATED END PLUG ASSEMBLY ARE SEPARATE.
3. RECOMMENDED HAND CRIMP TOOL FOR STRAIGHT COAX INNER CONTACT = Z80-292 WITH POSITIONER Z80-291.
4. RECOMMENDED HAND CRIMP TOOL AND DIE SET FOR COAX SLEEVE = Z80-293.
5. COAX (& POWER) CONTACT EXTRACTION TOOL = Z80-290
6. INSTRUCTION SHEETS ARE AVAILABLE.

JMB	1	11.01.07	----
NAME	ISS.	DATE	C/NOTE
APPROVED: <i>[Signature]</i>			
CHECKED: <i>[Signature]</i>			
DRAWN: JM BROOKES		CUSTOMER REF.:	
ASSEMBLY DRG:			

HARWIN			THIS DRAWING AND ANY INFORMATION OR DESCRIPTIVE MATTER SET OUT HEREON ARE CONFIDENTIAL AND COPYRIGHT PROPERTY OF THE HARWIN GROUP AND MUST NOT BE DISCLOSED, LOANED, COPIED OR USED FOR MANUFACTURING, TENDERING OR FOR ANY OTHER PURPOSE WITHOUT THEIR WRITTEN PERMISSION.	TOLERANCES	MATERIAL:	TITLE:
HARWIN INC U.S.A. TEL: (812) 542 2540 FAX: (812) 542 2541	HARWIN PLC U.K. TEL: 023 9231 4545 FAX: 023 9231 4590	HARWIN PTE SINGAPORE TEL: 65 6779 4909 FAX: 65 6779 3868		X. = ±1mm X.X = ±0.25mm X.XX = ±0.10mm X.XXX = ±0.01mm ANGLES = ±5° UNLESS STATED	FINISH: S/AREA: mm ²	DATAMATE MALE MIX-TEK (GENERIC DRAWING)
ENVIRONMENTAL:			DRAWING NUMBER:	M80-5XXXXXXXX-XX-XXX-XX-XXX		SHT 2 OF 3
TEMPERATURE RANGE = -55°C TO +125°C				M80-5XXXXXXXX-XX-XXX-XX-XXX		SHT 2 OF 3

Customer Information Sheet

DRAWING No.: M80-5XXXXXXXX-XX-XXX-XX-XXX

SHEET 3 OF 3

IF IN DOUBT - ASK

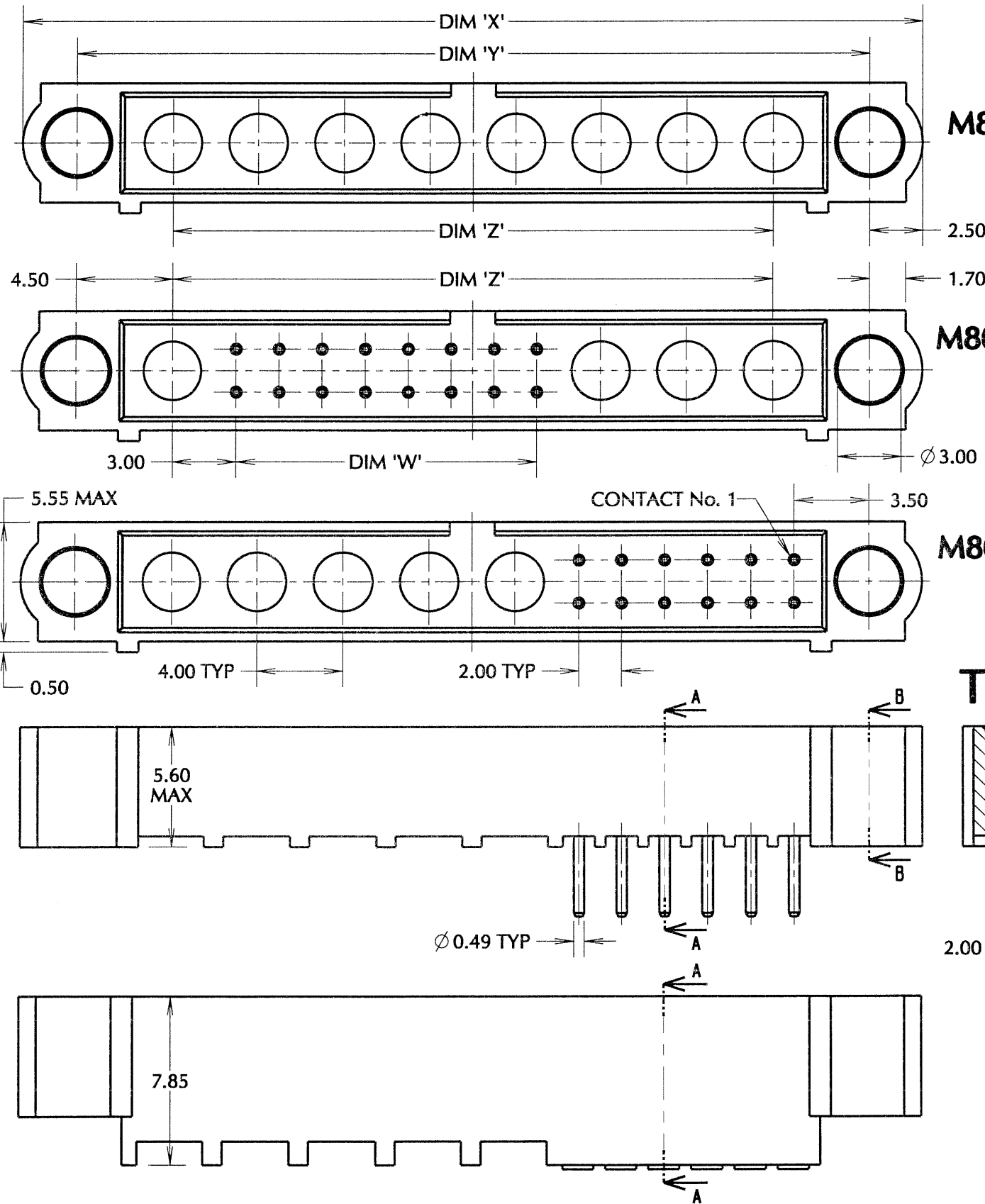
©

NOT TO SCALE

THIRD ANGLE PROJECTION

ALL DIMENSIONS IN mm

CONNECTOR DIMENSIONS



PART NUMBERS ARE EXAMPLES FOR THE LAYOUTS SHOWN

SPECIAL CONTACTS ONLY
M80-5000000XX-08-XXX-00-000

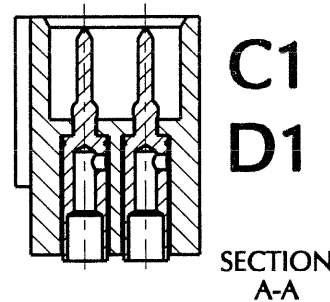
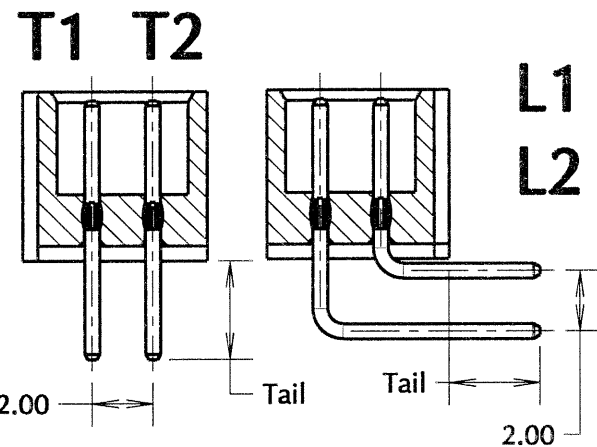
DIM 'Z' = (T - 1) x 4
 DIM 'Y' = DIM 'Z' + 9
 DIM 'X' = DIM 'Y' + 5

SPECIAL CONTACTS ON BOTH SIDES
M80-5XX16XXXX-03-XXX-01-XXX

DIM 'W' = S - 2
 DIM 'Z' = DIM 'W' + (T x 4) - 2
 DIM 'Y' = DIM 'Z' + 9
 DIM 'X' = DIM 'Y' + 5

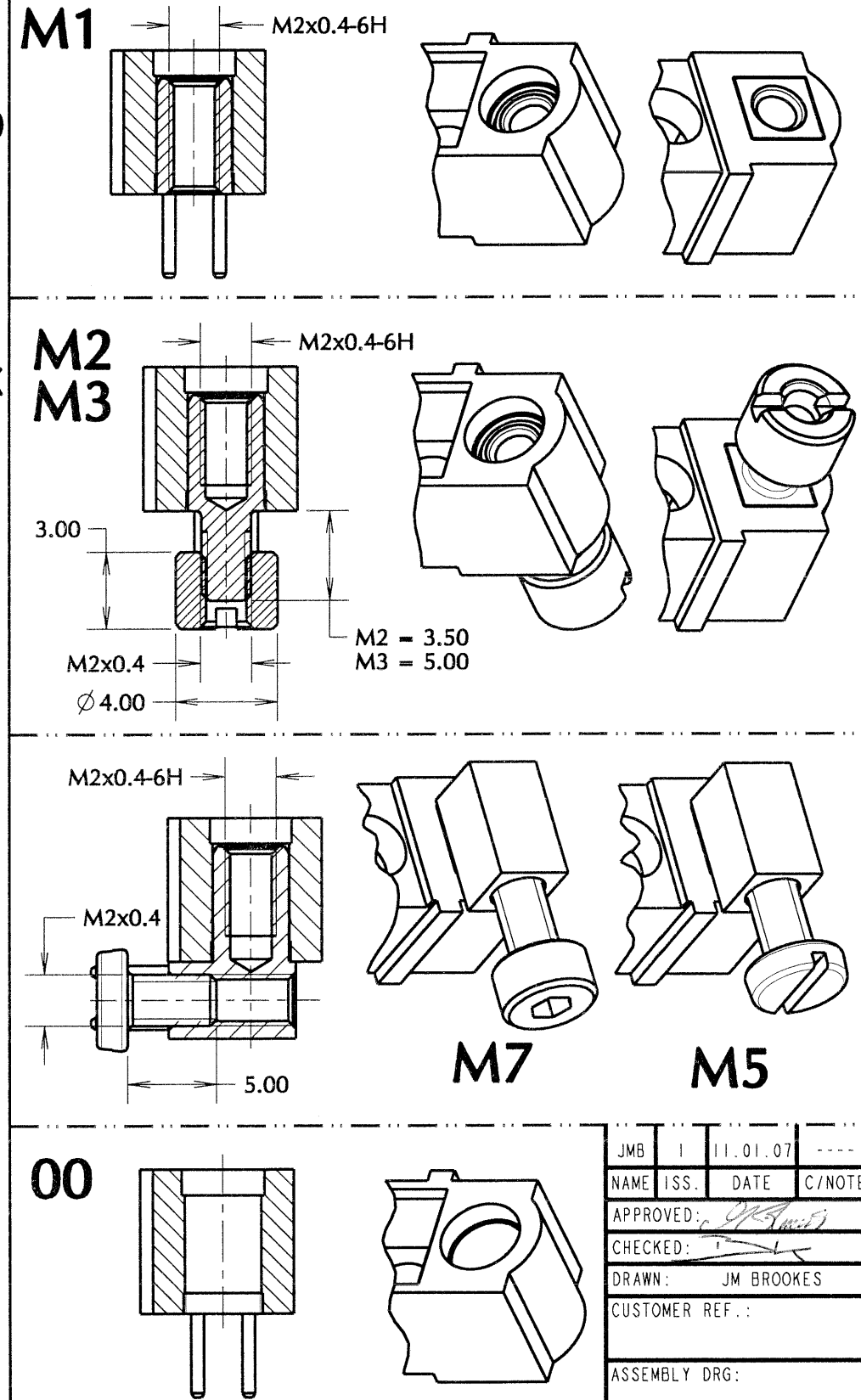
SPECIAL CONTACTS ON ONE SIDE
M80-5XX12XXXX-00-000-05-XXX

DIM 'W' = S - 2
 DIM 'Z' = DIM 'W' + (T x 4) - 1
 DIM 'Y' = DIM 'Z' + 8
 DIM 'X' = DIM 'Y' + 5



SECTION A-A

FIXING / JACKSCREW VARIANTS



S = TOTAL NUMBER OF SIGNAL CONTACTS
 T = TOTAL NUMBER OF SPECIAL CONTACTS

HARWIN

HARWIN INC U.S.A. TEL: (812) 542 2540 FAX: (812) 542 2541	HARWIN PLC U.K. TEL: 023 9231 4545 FAX: 023 9231 4590	HARWIN PTE SINGAPORE TEL: 65 6779 4909 FAX: 65 6779 3868
--	--	---

THIS DRAWING AND ANY INFORMATION OR DESCRIPTIVE MATTER SET OUT HEREON ARE CONFIDENTIAL AND COPYRIGHT PROPERTY OF THE HARWIN GROUP AND MUST NOT BE DISCLOSED, LOANED, COPIED OR USED FOR MANUFACTURING, TENDERING OR FOR ANY OTHER PURPOSE WITHOUT THEIR WRITTEN PERMISSION.

TOLERANCES
 X. = ±1mm
 X.X = ±0.25mm
 X.XX = ±0.10mm
 X.XXX = ±0.01mm
 ANGLES = ±5°
 UNLESS STATED

MATERIAL:
 FINISH:
 S/AREA: mm²

TITLE:
 DATAMATE MALE MIX-TEK
 (GENERIC DRAWING)
 DRAWING NUMBER:
M80-5XXXXXXXX-XX-XXX-XX-XXX
 ASSEMBLY DRG:

JMB	1	11.01.07	----
NAME	ISS.	DATE	C/NOTE
APPROVED: <i>[Signature]</i>			
CHECKED: <i>[Signature]</i>			
DRAWN: JM BROOKES			
CUSTOMER REF.:			
ASSEMBLY DRG:			