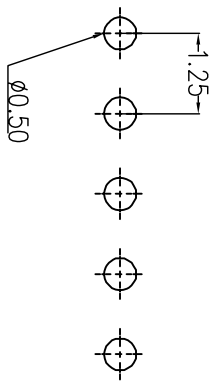
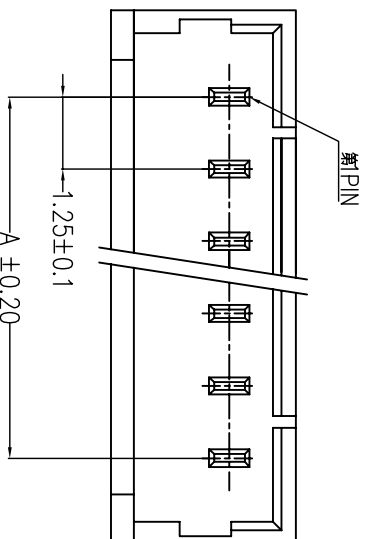
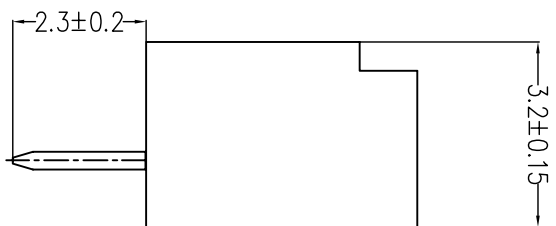
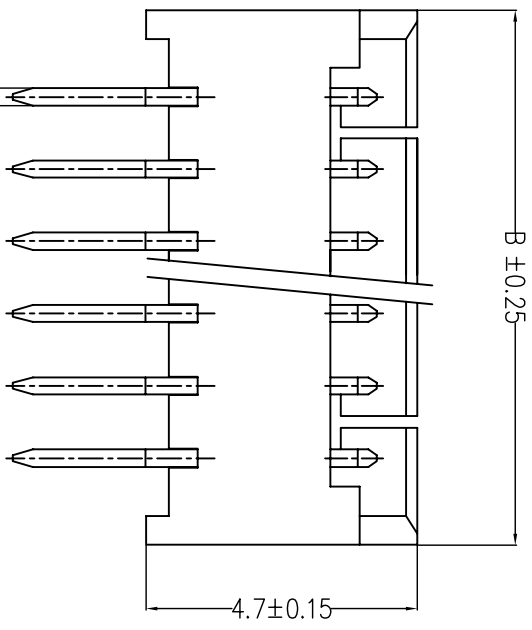


REV.	DESCRIPTION	DATE



PCB Hole Layout

- Material:**
- Housing: Nylon-6T, UL94V-0.
 - Terminal: Copper alloy, Tin-plated.
- Electrical:**
- Current rating : 1A AC/DC.
 - Voltage rating : 125V AC/DC.
 - Temperature range : -25°C to +85°C.
 - Contact resistance: 20mΩ max.
 - Insulation resistance: 100MΩ min.
 - Withstanding voltage: 250V AC/minute.



Circuits	Dimensions	
	A (mm)	B (mm)
02P	1.25	4.25
03P	2.50	5.50
04P	3.75	6.75
05P	5.00	8.00
06P	6.25	9.25
07P	7.50	10.50
08P	8.75	11.75
09P	10.00	13.00
10P	11.25	14.25
11P	12.50	15.50
12P	13.75	16.75
13P	15.00	18.00
14P	16.25	19.25
15P	17.50	20.50

<p>TOLERANCE</p> <p>.X ± .20</p> <p>.XX ± .15</p> <p>.XXX ± .10</p>		<p>DRAWER</p> <p>Chiu Chuan Siau</p>	
<p>UNITS : mm</p>		<p>CHECK</p> <p>Shi Jeng Siau</p>	
<p>SCALE</p> <p>FREE</p>		<p>DESIGNED</p> <p>Chiu Chuan Siau</p>	
<p>SIZE</p> <p>A4</p>		<p>DATE</p> <p>12 / 10 / 2010</p>	
<p>SHEET</p> <p>1 OF 1</p>		<p>APPROVAL</p> <p>Shi Jeng Siau</p>	
<p>REV.</p> <p>A</p>		<p>PART NO.</p> <p>WTB-P125-XX</p>	
<p>SCALE</p> <p>FREE</p>		<p>DRAW NO.</p> <p>WTB-P125</p>	
<p>NAME</p> <p>1.25mm Water 180°</p>			
<p>Logo</p> <p>SynLight 日亮電子科技有限公司</p> <p>Sun-Light Electronic Technologies Inc.</p>			