

**SPECIFICATIONS**

**Friction Header Connector**

**Mechanical**

**Contact Retention Force:** 0.45kg min.  
**Insertion Force:** 0.3kg max. Per Contact  
**Withdraw Force:** 0.02kg min. Per Contact

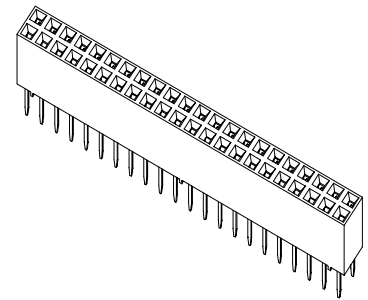
**SL50 Series**  
**Vertical T/H Type**  
**2.00mmX2.00mm Grid**  
**[.079"X.079"]**  
**Dual Row Receptacle**

**Electrical**

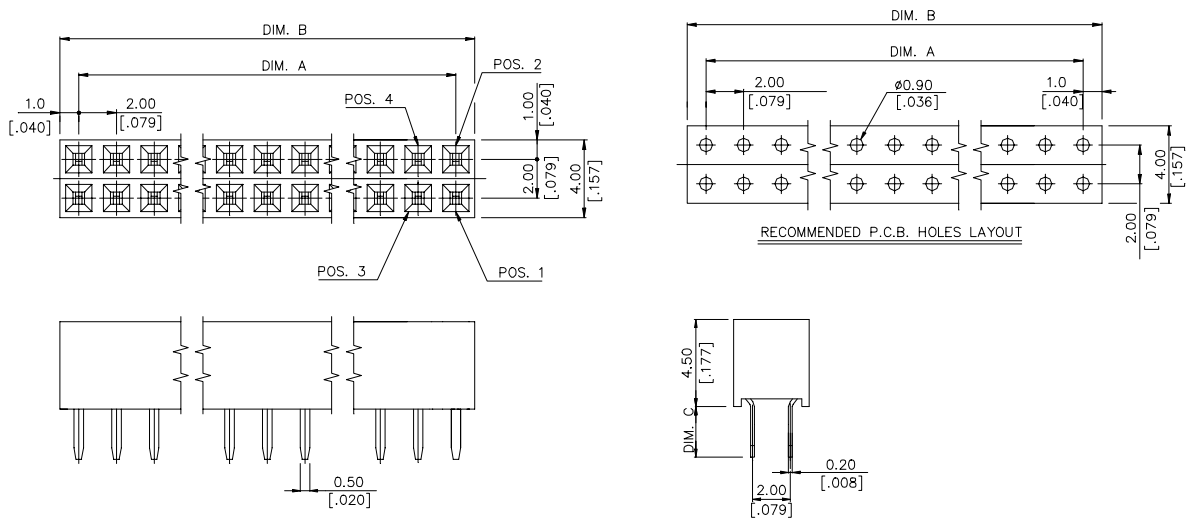
**Voltage Rating:** 200V  
**Current Rating:** 1.0A  
**Contact Resistance:** 25mΩ max.  
**Dielectric Withstanding Voltage:** 650V AC  
**Insulation Resistance:** 1000MΩ min.

**Physical**

**Housing:** Thermoplastic, Glass Filled , UL94V-0 rated in black color  
**Contact:** Copper alloy  
**Plating:** See "ORDERING INFORMATION"  
**Operating Temperature:** -40 to +105



**DRAWING**



**ORDERING INFORMATION**

**PRODUCT NO. : S L 5 0 \* \* \* - \*\***

Socket Conn. \_\_\_\_\_  
 Regular Solder Type \_\_\_\_\_  
 Termination & Contact Type \_\_\_\_\_  
 No. Of Single Row Pos. \_\_\_\_\_  
**PLATING CODE** \_\_\_\_\_  
 7 = 15u" MIN. Gold On Contact Area  
 100 u" MIN. Tin/Lead On Tail.  
 V = 15u" MIN. Gold On Contact Area  
 100u" MIN. Tin On Tail With Rohs Compliance.

NONE: DIM. C = 2.5mm  
 S: DIM. C = 0.90mm  
 C1: DIM. C = 1.5mm  
 D2: DIM. C = 1.5mm & #20 POS. OMITTED AND PLUG  
 M2: DIM. C = 1.70mm & #20 POS. OMITTED AND PLUG  
 P1: DIM. C = 2.5mm & #6 OMITTED AND PLUG  
 T8: DIM. C = 2.5mm & #25, 45TH & #46 OMITTED AND PLUG  
 T2: DIM. C = 2.5mm & #20 OMITTED AND PLUG  
 D7: DIM. C = 1.50mm & #26 OMITTED AND PLUG  
 C2: DIM. C = 2.5mm (STANDOFF TYPE 2)

See Attachment



SL5025*~**	25/50	48.00 [1.890]	50.00 [1.992]
SL5024*~**	24/48	46.00 [1.811]	48.00 [1.890]
SL5023*~**	23/46	44.00 [1.732]	46.00 [1.811]
SL5022*~**	22/44	42.00 [1.654]	44.00 [1.732]
SL5021*~**	21/42	40.00 [1.575]	42.00 [1.654]
SL5020*~**	20/40	38.00 [1.496]	40.00 [1.575]
SL5019*~**	19/38	36.00 [1.417]	38.00 [1.496]
SL5018*~**	18/36	34.00 [1.339]	36.00 [1.417]
SL5017*~**	17/34	32.00 [1.260]	34.00 [1.339]
SL5016*~**	16/32	30.00 [1.181]	32.00 [1.260]
SL5015*~**	15/30	28.00 [1.102]	30.00 [1.181]
SL5014*~**	14/28	26.00 [1.024]	28.00 [1.102]
SL5013*~**	13/26	24.00 [.945]	26.00 [1.024]
SL5012*~**	12/24	22.00 [.866]	24.00 [.945]
SL5011*~**	11/22	20.00 [.787]	22.00 [.866]
SL5010*~**	10/20	18.00 [.709]	20.00 [.787]
SL5009*~**	9/18	16.00 [.630]	18.00 [.709]
SL5008*~**	8/16	14.00 [.551]	16.00 [.630]
SL5007*~**	7/14	12.00 [.472]	14.00 [.551]
SL5006*~**	6/12	10.00 [.394]	12.00 [.472]
SL5005*~**	5/10	8.00 [.315]	10.00 [.394]
SL5004*~**	4/8	6.00 [.236]	8.00 [.315]
SL5003*~**	3/6	4.00 [.157]	6.00 [.236]
SL5002*~**	2/4	2.00 [.079]	4.00 [.157]
PART NO.	NO. OF POS.	DIM. A	DIM. B