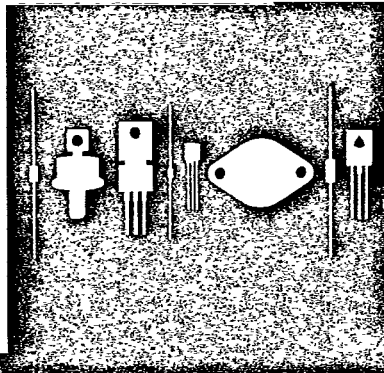


Central Semiconductor Corp.
 Central Semiconductor Corp.
 Central Semiconductor Corp.
 Central™ Semiconductor Corp.
 145 Adams Avenue
 Hauppauge, New York 11788



CRSH16D SERIES

16 AMP, 20 THRU 80 VOLTS
 CENTER TAP SCHOTTKY RECTIFIER

JEDEC TO-220 CASE

DESCRIPTION

The CENTRAL SEMICONDUCTOR CRSH16D Series types are 16 AMP Center Tapped Schottky Rectifiers mounted in a JEDEC TO-220 Case designed for applications requiring low forward drop and instantaneous reverse recovery times.

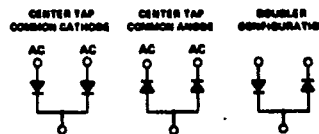
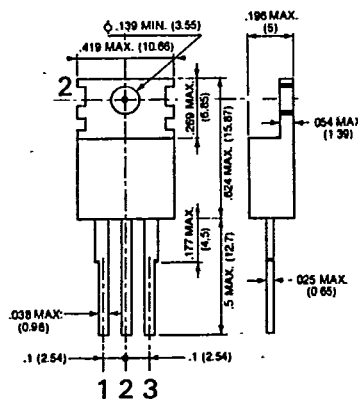
MAXIMUM RATINGS (T_A=25°C unless otherwise noted)

	CRSH16 D-2	CRSH16 D-3	CRSH16 D-4	CRSH16 D-5	CRSH16 D-6	CRSH16 D-8	UNIT
V _{RRM}	20	30	40	50	60	80	V
V _R	20	30	40	50	60	80	V
V _R (RMS)	14	21	28	35	42	56	V
I _O @T _C =100°C				16			A
I _{FSM}							A
T _J , T _{STG}				-65 TO +150			°C
θ _{JC}				3.0 TYP			°C/W

ELECTRICAL CHARACTERISTICS (T_C=25°C unless otherwise noted)

SYMBOL	TEST CONDITIONS	MIN	MAX	UNIT
V _F (20V-40V)	I _F =8.0 Per leg		0.55	V
V _F (50V-80V)	I _F =8.0 Per leg		0.5	V
I _R	V _R =Rated V _{RRM}		10	mA
I _R	V _R =Rated V _{RRM} , T _C =100°C		100	mA

Standard Device is Common Cathode Configuration.
 For Common Anode Configuration Add "A" to Part Number.
 For Doubler Configuration Add "E" to Part Number.



LEAD CODE (COMMON CATHODE)

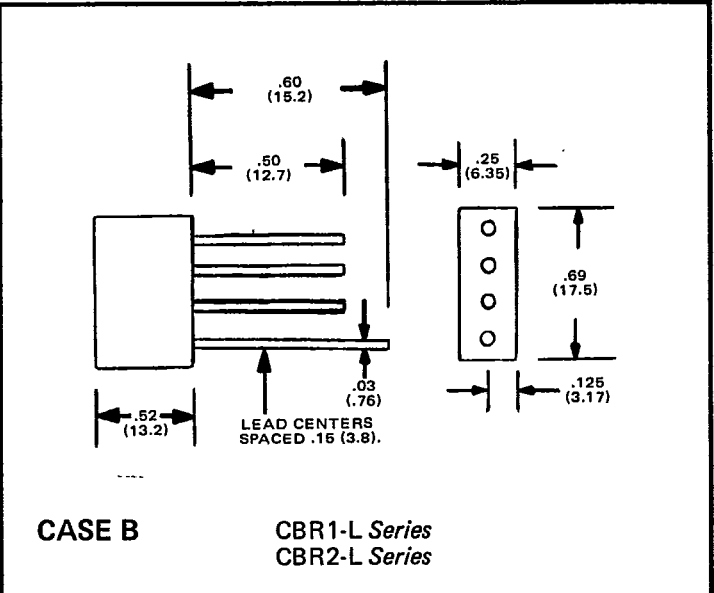
1. ANODE (AC)
2. CATHODE (POS.)
3. ANODE (AC)

CASE OUTLINE DRAWINGS

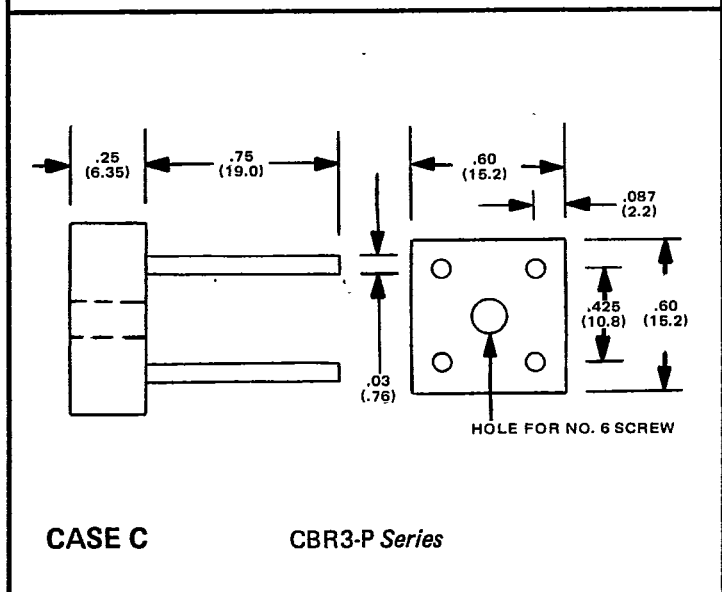
D



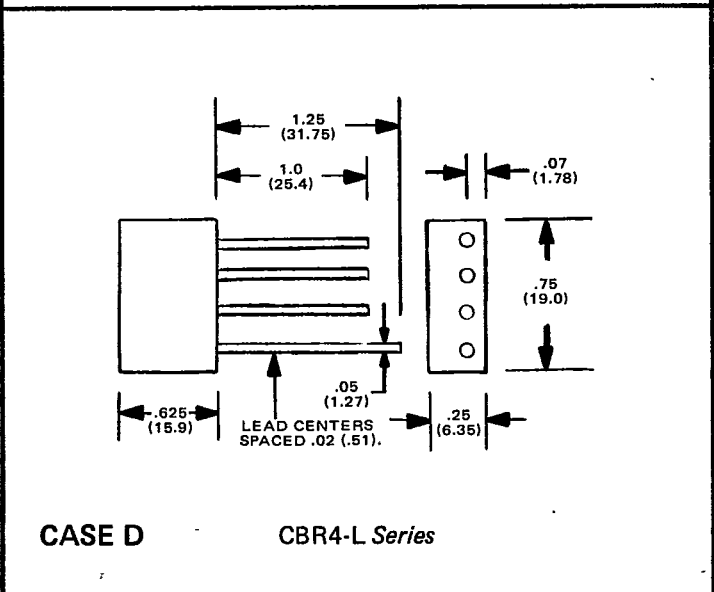
CASE A CBR1 Series
CBR2 Series



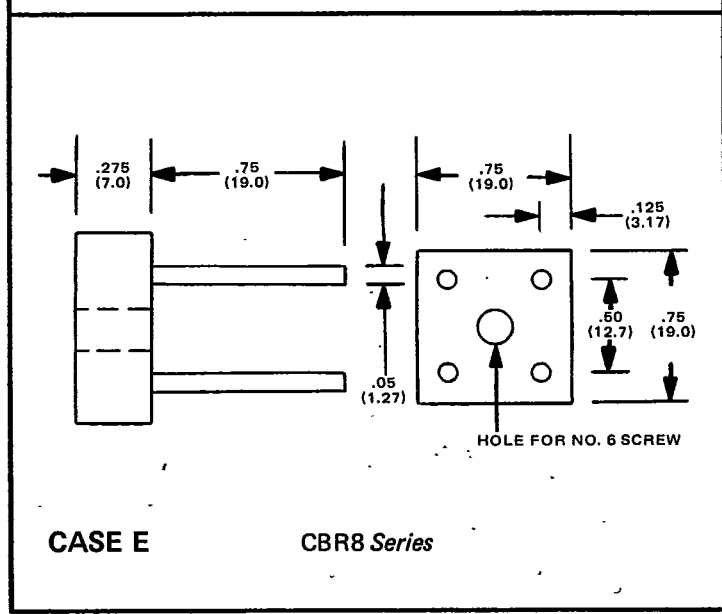
CASE B CBR1-L Series
CBR2-L Series



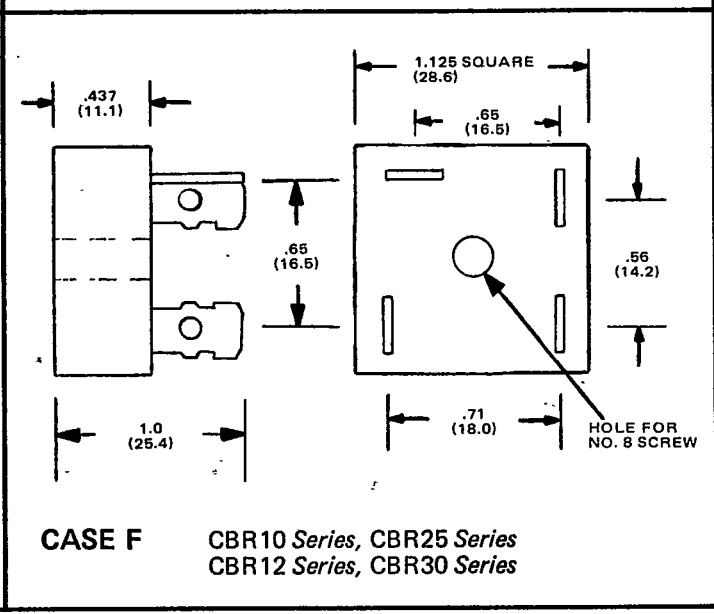
CASE C CBR3-P Series



CASE D CBR4-L Series



CASE E CBR8 Series



CASE F CBR10 Series, CBR25 Series
CBR12 Series, CBR30 Series

All Dimensions in Inches (Millimeters)
Drawings Not To Scale

f

